

U.S. PUBLIC LAND SURVEY MONUMENT RECORD - GRANT COUNTY, WI

Section 22, Town 4 North Range 2 West, Town of Ellenboro (a)

NOTE: This form is intended and designed to fulfill all requirements of the Wisconsin Administrative Code Chapter A-E 7.08, U.S. Public Land Survey Monument Record (3) (a) (b) (c) (d) (e) (f) (g) (h) (i).

CERTIFICATE: (i)

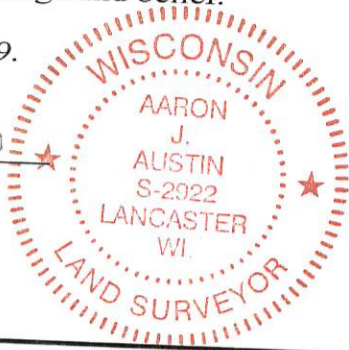
I, Aaron J. Austin, Wisconsin Professional Land Surveyor, do hereby certify that the corner location on this record was determined by me and/or under my direct supervision and that this U.S. Public Land Survey Monument Record is correct and complete to the best of my knowledge and belief.

Dated this 22th day of April, 2019.

Aaron J. Austin

Aaron J. Austin, S-2922

Grant County Coordinates:
NAD 83 (2011)
Northing: 508,308.15
Easting: 852,634.32



⊕ = CORNER LOCATION

HISTORY OF CORNER ESTABLISHMENT:

Original corner was set in 1833 by Robert Clark.
Overton tied to the corner on a survey filed in Book B, Page 473 dated 3/26/1856.
Overton tied to the corner on a survey filed in Book B, Page 474 dated 4/2/1856.
Overton tied to the corner on a survey filed in Book B, Page 475 dated 4/8/1856.
Larry Austin set a 1" Rebar with Grant County Aluminum Cap and prepared a Survey Monument Record dated 8-5-2005.

DESCRIPTION OF CORNER EVIDENCE FOUND: (b) (f) (g) (h)

I found the 1" Rebar as set by Larry Austin along with three witness monuments. I set one additional witness monument after I verified the monument's location with G.P.S. and E.D.M. methods.

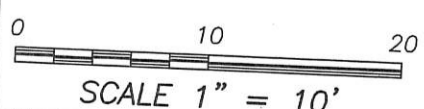
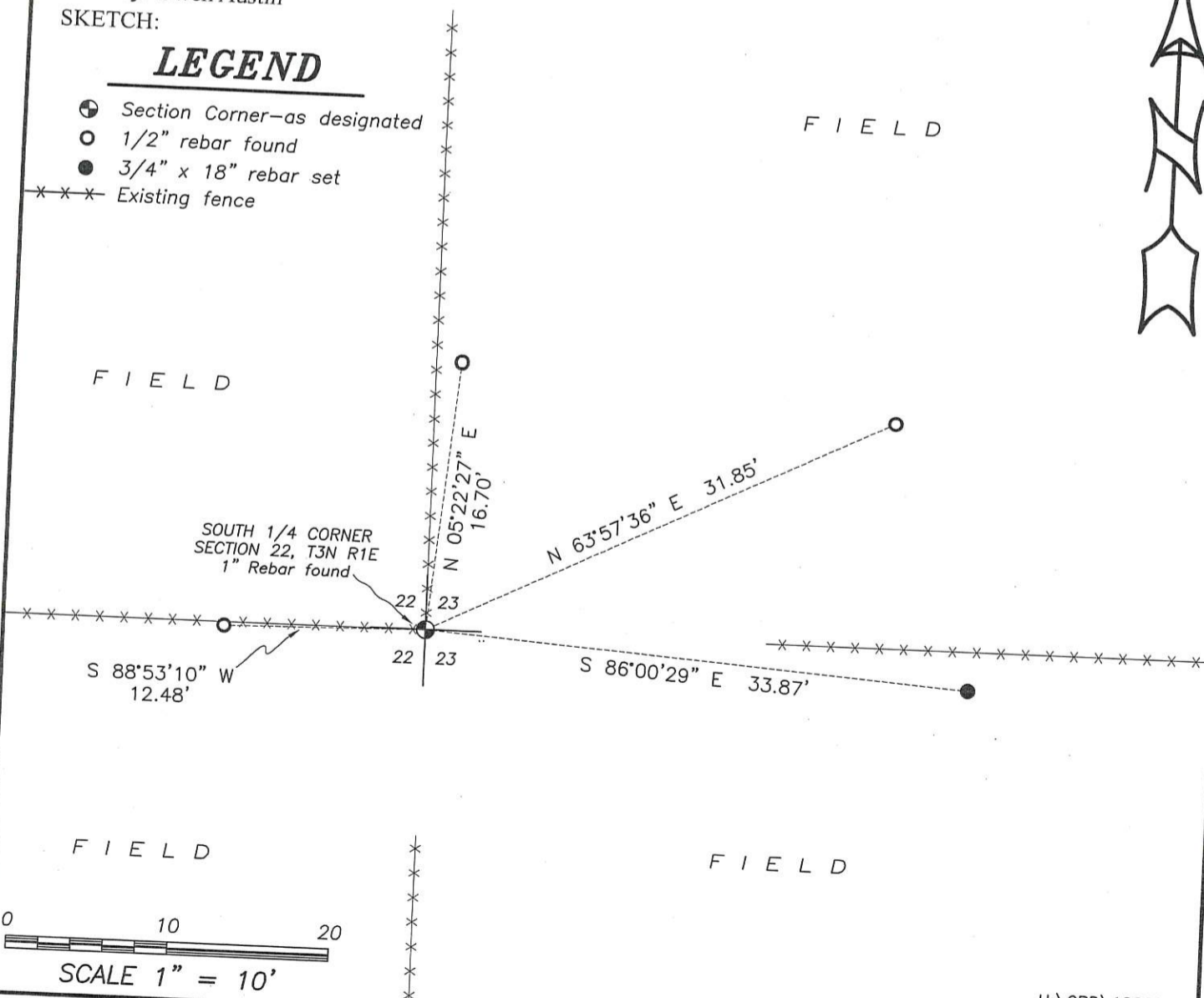
DESCRIPTION OF CORNER AND WITNESS MONUMENTS, references and accessories used to perpetuate the original or re-established location of this corner. (c) (d) (e)

Witnesses to corner location Shane Austin, Owen Austin.
Drawn by: Owen Austin

SKETCH:

LEGEND

- ⊕ Section Corner—as designated
- 1/2" rebar found
- 3/4" x 18" rebar set
- x x x Existing fence



SCALE 1" = 10'