

42077

U.S. PUBLIC LAND SURVEY MONUMENT RECORD - GRANT COUNTY, WI

Section 22, Town 4 North Range 2 West, Town of Ellenboro (a)

NOTE: This form is intended and designed to fulfill all requirements of the Wisconsin Administrative Code Chapter A-E 7.08, U.S. Public Land Survey Monument Record (3) (a) (b) (c) (d) (e) (f) (g) (h) (i).

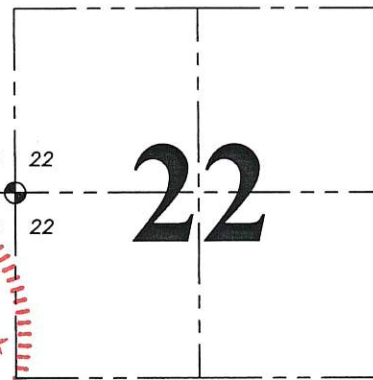
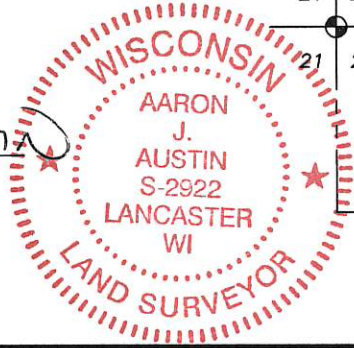
CERTIFICATE: (i)

I, Aaron J. Austin, Wisconsin Professional Land Surveyor, do hereby certify that the corner location on this record was determined by me and/or under my direct supervision and that this U.S. Public Land Survey Monument Record is correct and complete to the best of my knowledge and belief.

GRANT CO. CORNER I.D.: 77

Dated this 21st day of May, 2018.

Aaron J. Austin
Aaron J. Austin, S-2922



⊙ = CORNER LOCATION

Grant County Coordinates:
NAD 83 (2011)
Northing: 508,303.49
Easting: 847,342.64

HISTORY OF CORNER ESTABLISHMENT:

Clark set the Original corner in 1832.
Larry Austin set a 1" Rebar with a Grant County Aluminum Cap and prepared a Survey Monument Record for the corner dated 1-7-2009.

DESCRIPTION OF CORNER EVIDENCE FOUND: (b) (f) (g) (h)

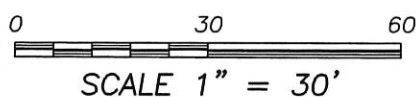
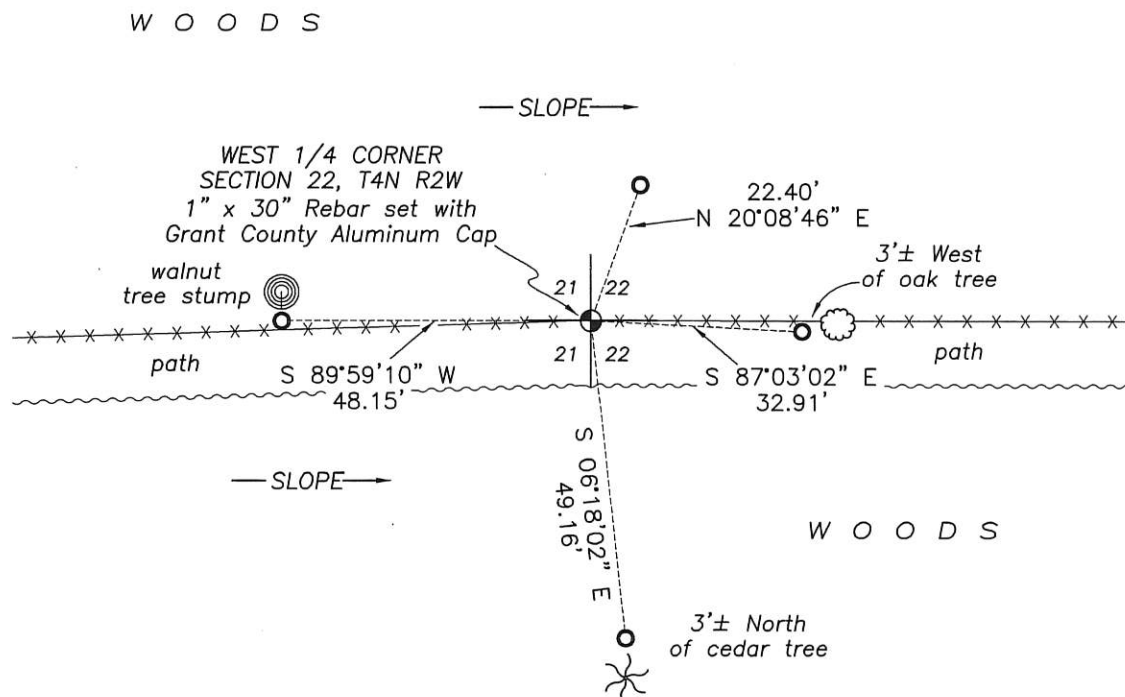
The monument appeared to have been removed during recent logging in the area. The monument was brought to my office by an adjoining land owner. I reset the monument and found all four witness corners as established by Larry Austin. The corner was verified with G.P.S. and E.D.M. methods

DESCRIPTION OF CORNER AND WITNESS MONUMENTS, references and accessories used to perpetuate the original or re-established location of this corner. (c) (d) (e)
Witnesses to corner location Shane Austin.

SKETCH:

LEGEND

- ⊙ Section Corner—as designated
- 1/2" rebar found
- ✪ Existing tree—as labeled
- ⊙ Existing stump
- x-x-x- Existing fence

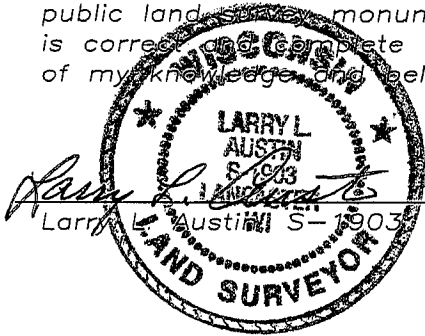


U.S. PUBLIC LAND SURVEY MONUMENT RECORD

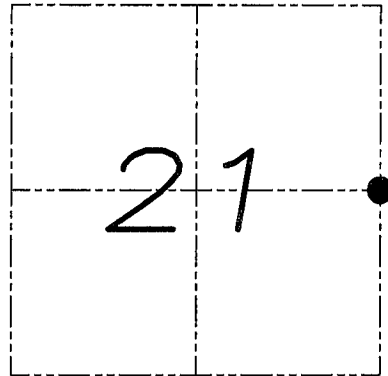
Section 21, Town 4 North Range 2 West, Town of Ellenboro, Grant County, Wisconsin

CERTIFICATE

I, Larry L. Austin, do hereby certify that the corner location on this record was determined by me and/or under my direct supervision and that this U.S. public land survey monument record is correct and complete to the best of my knowledge and belief.



1.7.09
date



● = CORNER LOCATION

HISTORY OF CORNER

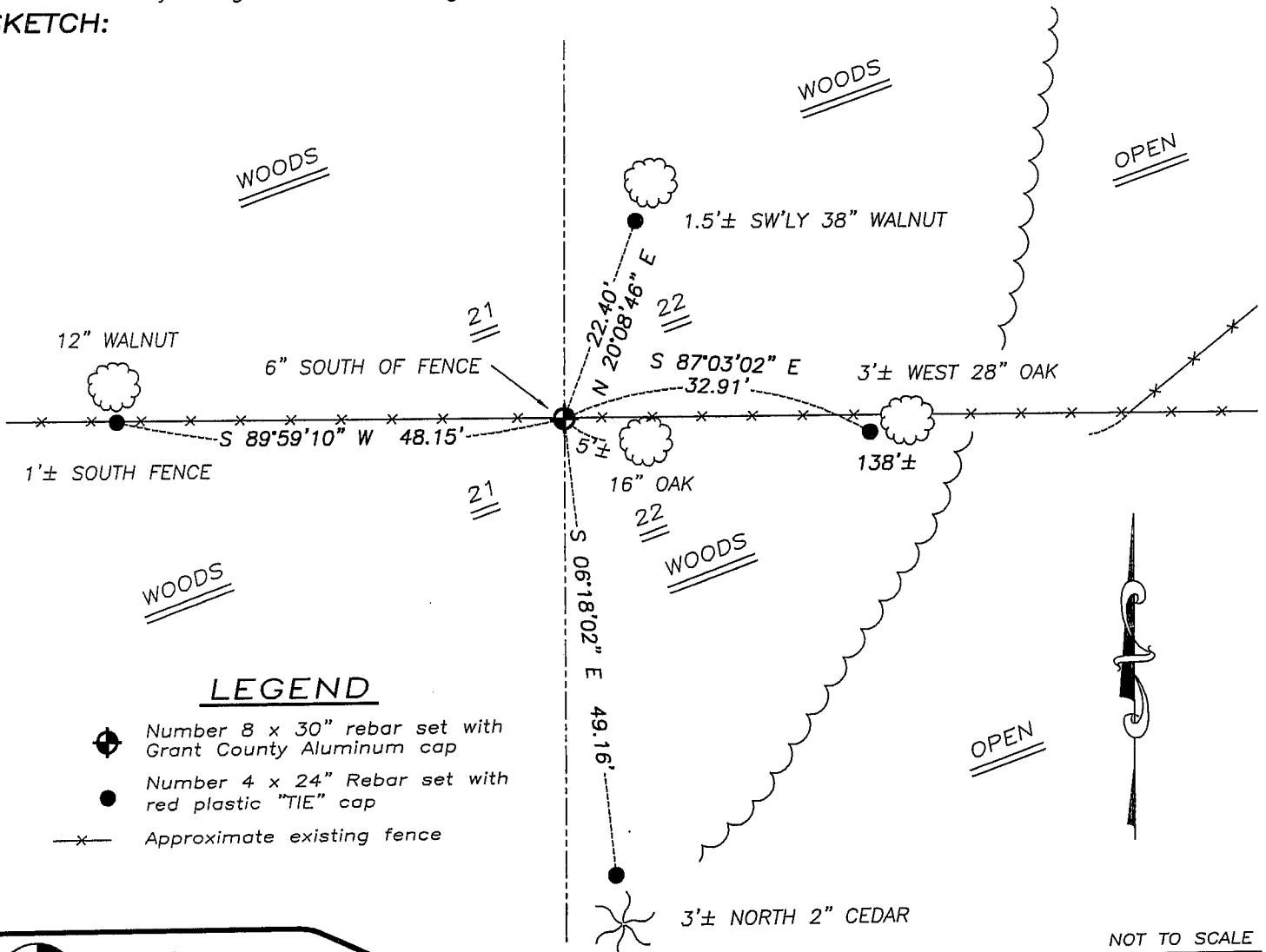
Corner was originally set in 1832 by Clark. No other record of the corner was found.

CORNER EVIDENCE FOUND

I reset the corner on-line between the Northeast and Southeast corners for Easting. An existing East-West fence was used for Northing. Verified this location using EDM & GPS methods.

DESCRIPTION OF CORNER AND WITNESS MONUMENTS, references and accessories used to perpetuate the original or re-established location of this corner. Witnesses to monument location Bobby Sedgwick & Brad Digman & Shane Austin

SKETCH:



LEGEND

- Number 8 x 30" rebar set with Grant County Aluminum cap
- Number 4 x 24" Rebar set with red plastic "TIE" cap
- x— Approximate existing fence

NOT TO SCALE



Austin
Engineering LLC

4211 HWY 81 E, LANCASTER, WI 53813
PHONE 608-723-6363 FAX 608-723-6702

JOB NUMBER: 08S262-MERKES
FIELDBOOK: TDSR, 2810
G:\T4NR2W\T4NR2W
H:\TIE\T4NR2W\77

DRAWN BY: SW AUSTIN
APPROVED: LL AUSTIN

77