

# GRANT COUNTY U.S. PUBLIC LAND SURVEY MONUMENT RECORD

INSTRUCTIONS: THIS RECORD SHALL SHOW THE LOCATION OF THE CORNER AND SHALL INCLUDE ALL OF THE FOLLOWING ELEMENTS (A THROUGH I).

(A) IDENTIFY THE CORNER AS REFERENCED TO THE U.S. PUBLIC LAND SURVEY SYSTEM

■ = CORNER MONUMENT RESTORED

WITNESSES TO CORNER LOCATION:

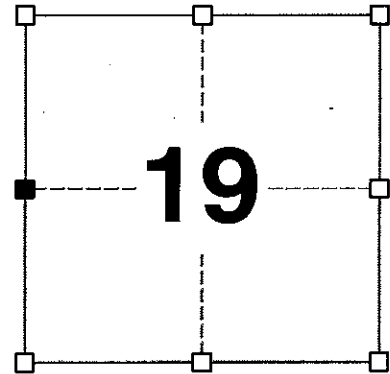
JAMIE L. BRANDT  
STEVEN A. ALT

GEOGRAPHIC COORDINATES,  
NAD 83 (2011) ADJUSTMENT:

LATITUDE: 42° 48' 21.98352"  
LONGITUDE: 90° 39' 49.03409"

WISCONSIN COORDINATE REFERENCE SYSTEM (WISCRS),  
GRANT COUNTY, NAD 83 (2011) ADJUSTMENT:

NORTHING: 508,411.45  
EASTING: 831,600.33



SECTION 19  
TOWNSHIP 4 NORTH, RANGE 2 WEST  
TOWN OF ELLENBORO

(B) DESCRIBE ANY RECORD EVIDENCE, MONUMENT EVIDENCE, OCCUPATIONAL EVIDENCE, TESTIMONIAL EVIDENCE OR ANY OTHER MATERIAL EVIDENCE YOU CONSIDERED, AND WHETHER THE MONUMENT WAS FOUND OR PLACED.

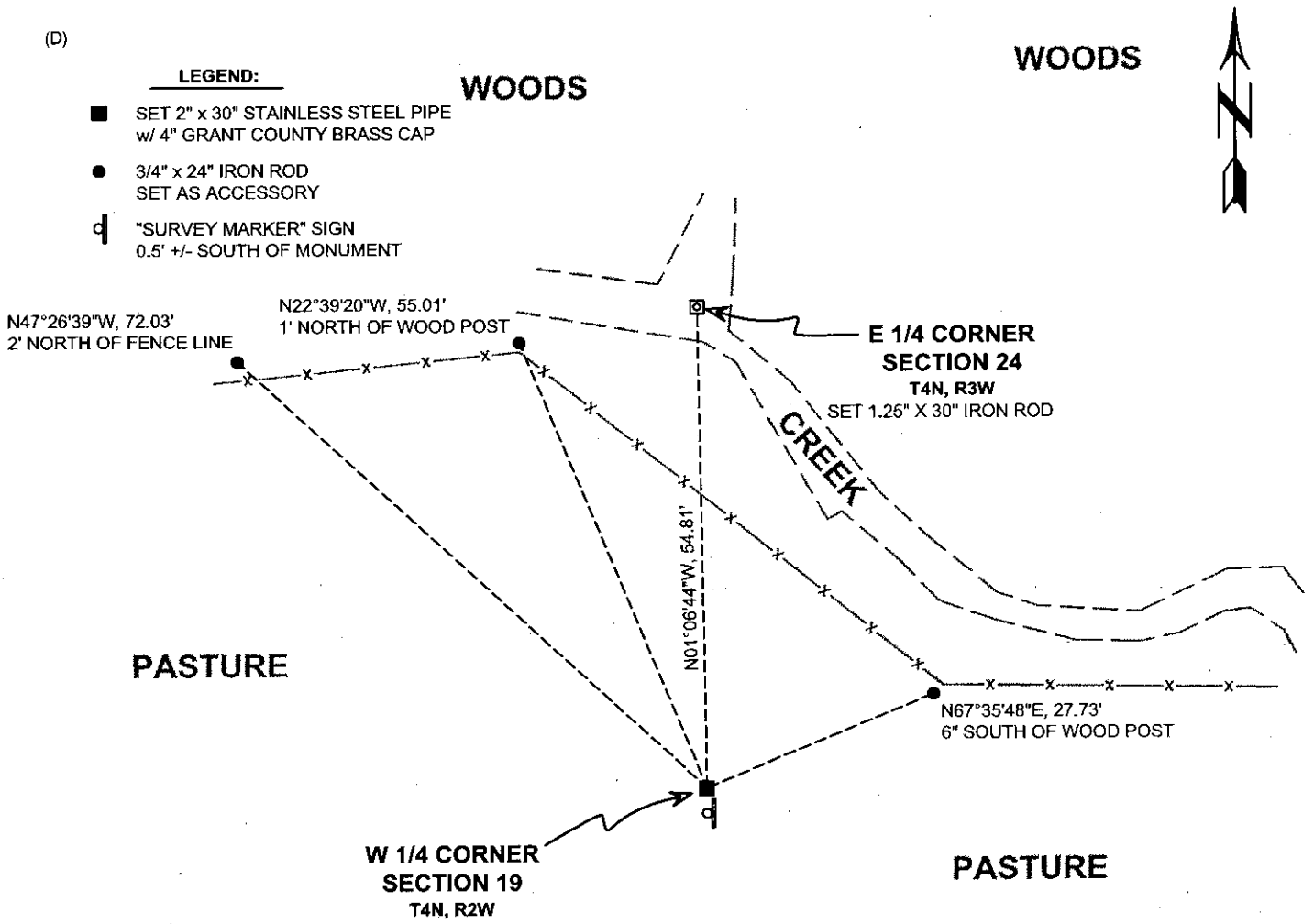
I RECOVERED THE 3/4" x 24" REBAR REFERENCED BY LARRY AUSTIN. I PRESUME THAT HIS "RECORDED OFFSET" METHOD OF SETTING THIS CORNER IS THE COMMON PRACTICE OF SETTING THE CORNER AT THE AVERAGE OFFSET OF THE NORTHWEST AND SOUTHWEST CORNERS OF THE SECTION. WHILE THIS IS NOT THE CORRECT METHOD, THIS CORNER WAS NOT ESTABLISHED UNTIL AUSTIN SET A MONUMENT HERE. THEREFORE, I CONSIDER HIS LOCATION WITHOUT ERROR DESPITE THE METHOD HE USED TO ESTABLISH IT. I REPLACED THE 3/4" REBAR WITH A 2" x 30" STAINLESS STEEL PIPE WITH A 4" GRANT COUNTY BRASS CAP.

(C) IN THE PLAN VIEW DRAWING BELOW, PROVIDE REFERENCE TIES TO AT LEAST 4 WITNESS MONUMENTS. WITNESS MONUMENTS SHALL BE MADE OF CONCRETE, NATURAL STONE, IRON, BEARING TREES OR ANY OTHER EQUALLY DURABLE MATERIAL. DEPICT THE RELEVANT MONUMENTS AND REFERENCE TIES WITH SUFFICIENT DETAIL TO ENABLE ACCURATE RELOCATION OF THE CORNER IF THE CORNER MONUMENT IS DISTURBED.

(D)

**LEGEND:**

- SET 2" x 30" STAINLESS STEEL PIPE w/ 4" GRANT COUNTY BRASS CAP
- 3/4" x 24" IRON ROD SET AS ACCESSORY
- "SURVEY MARKER" SIGN 0.5' +/- SOUTH OF MONUMENT



(E) DESCRIBE ANY MATERIAL DISCREPANCY BETWEEN THE LOCATION OF THE CORNER AS RESTORED OR REESTABLISHED AND THE LOCATION OF THAT CORNER AS PREVIOUSLY RESTORED OR REESTABLISHED BY DISTANCE AND DIRECTION. SHOW THE DISCREPANCY ON THE PLAN VIEW DRAWING UNDER (D), ABOVE. SHOW THE DISTANCES BETWEEN THE CORNER AS PREVIOUSLY RESTORED OR REESTABLISHED AND (1) THE CORNER AS RESTORED OR REESTABLISHED, AND (2) TO AT LEAST 2 OF THE WITNESS MONUMENTS SHOWN ON THE DRAWING IN (D) ABOVE.

N/A

(F) WAS THE CORNER RESTORED THROUGH ACCEPTANCE OF (1) AN OBLITERATED EVIDENCE LOCATION, OR (2) A FOUND PERPETUATED LOCATION?

(2) A FOUND PERPETUATED LOCATION.

(G&H) WAS THE CORNER REESTABLISHED THROUGH LOST CORNER PROPORTIONATE METHODS? IF SO, SHOW THE METHOD, INCLUDING THE DIRECTIONS AND DISTANCES TO OTHER PUBLIC LAND SURVEY CORNERS USED AS EVIDENCE OR USED FOR PROPORTIONING IN DETERMINING THE CORNER LOCATION.

N/A

CORNER HISTORY

THIS CORNER WAS NOT ESTABLISHED BY THE ORIGINAL GOVERNMENT SURVEY.

IN A TIE SHEET DATED 12 JANUARY 1998, LARRY AUSTIN REPORTS SETTING A 0.75" x 24" IRON ROD AT THE THE "RECORDED OFFSET" FROM THE EAST QUARTER CORNER OF SECTION 24, T4N, R3W.

AUSTIN REPORTS FINDING A 3/4" REBAR IN SUBSEQUENT PLATS OF SURVEY DATED 9 OCTOBER 1999 AND 31 OCTOBER 2003.

(I) I, JAY P. ADAMS, P.L.S. - 2879, CERTIFY THAT THE CORNER LOCATION SHOWN ON THIS RECORD WAS DETERMINED BY ME OR UNDER MY DIRECTION AND CONTROL AND THAT THIS U.S. PUBLIC LAND SURVEY MONUMENT RECORD IS CORRECT AND COMPLETE TO THE BEST OF MY KNOWLEDGE AND BELIEF.



27 NOVEMBER 2018

SIGNATURE

DATE

AFFIX LAND SURVEYOR SEAL

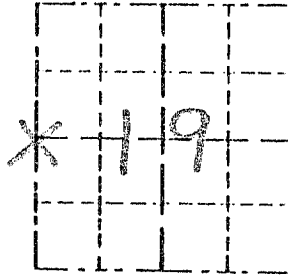


Survey Monument Record

TYPE OF MONUMENT 3/4" X 24" IRON  
BAR SET

CORNER NO. 74  
SECTION 19  
TOWN 4N  
RANGE 2W

FIELD BOOK: 99-02  
PAGE \_\_\_\_\_



LOCATION  
(Indicated by "X")

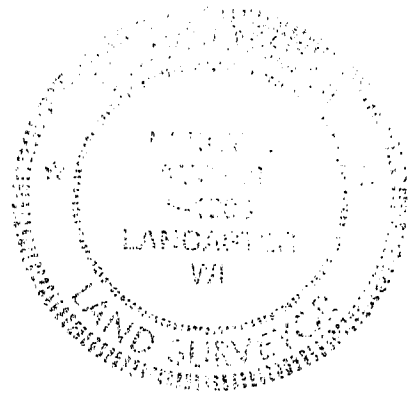
BASIS FOR MONUMENT LOCATION

(Use reverse side if necessary)

Show info such as: History of corner, with reference to Vol. and pg, dates, surveyor; exact description of monument replaced; if location computed, by taped or EDM traverse; landowner, remarks, etc.

SEAL:

NO RECORD OF CORNER FOUND SINCE ORIGINAL SURVEYS, CORNER SET AT THE RECORDED OFFSET FROM THE EAST 1/4 CORNER OF SECTION 24 T4N R3W, AND ON THE EAST LINE OF SECTION 24; VERIFIED THIS LOCATION BY EDM TRAVERSE OF THE AREA.



CERTIFIED CORRECT

*Larry J. Rust*  
Registered Land Surveyor

DATE: 1-12-98

TIE SKETCH

Show at least three (3) ties and monument

LEGEND

- 3/4" X 24" IRON BARSET
- 1/2" X 15" IRON BAR SET
- EXISTING FENCE

