

GRANT COUNTY U.S. PUBLIC LAND SURVEY MONUMENT RECORD

INSTRUCTIONS: THIS RECORD SHALL SHOW THE LOCATION OF THE CORNER AND SHALL INCLUDE ALL OF THE FOLLOWING ELEMENTS (A THROUGH I).

(A) IDENTIFY THE CORNER AS REFERENCED TO THE U.S. PUBLIC LAND SURVEY SYSTEM

■ = CORNER MONUMENT RESTORED

WITNESSES TO CORNER LOCATION:

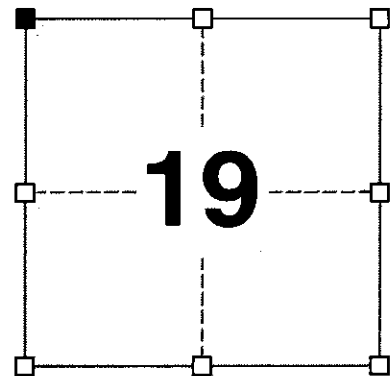
JAMIE L. BRANDT
STEVE A. ALT

GEOGRAPHIC COORDINATES,
NAD 83 (2011) ADJUSTMENT:

LATITUDE: 42° 48' 48.65581"
LONGITUDE: 90° 39' 49.71738"

WISCONSIN COORDINATE REFERENCE SYSTEM (WISCRS),
GRANT COUNTY, NAD 83 (2011) ADJUSTMENT:

NORTHING: 511,111.77
EASTING: 831,545.03



SECTION 19
TOWNSHIP 4 NORTH, RANGE 2 WEST
TOWN OF ELLENBORO

(B) DESCRIBE ANY RECORD EVIDENCE, MONUMENT EVIDENCE, OCCUPATIONAL EVIDENCE, TESTIMONIAL EVIDENCE OR ANY OTHER MATERIAL EVIDENCE YOU CONSIDERED, AND WHETHER THE MONUMENT WAS FOUND OR PLACED.

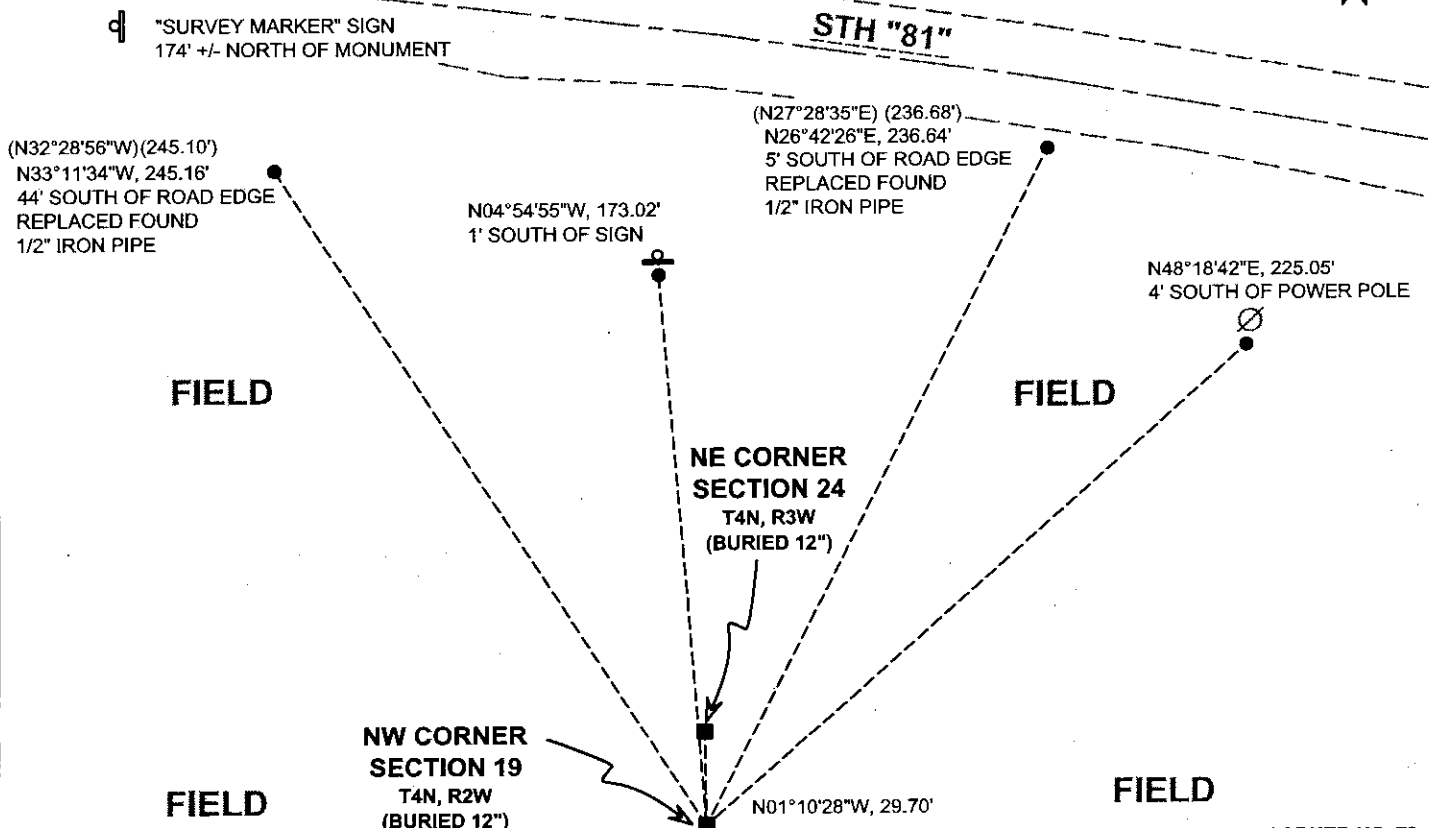
I COULD FIND NO MONUMENTS OR BEARING TREES FROM THE ORIGINAL GOVERNMENT SURVEY OR THE 3/4" REBAR REFERENCED BY LARRY AND AARON AUSTIN. THIS AREA IS NO LONGER A DRIVEWAY AND I SUSPECT THE CORNER WAS OBLITERATED IN THE PROCESS OF CONVERTING THIS AREA BACK TO AN AGRICULTURAL FIELD. I WAS ABLE TO RECOVER TWO OF AUSTIN'S TIES AND USED THEM TO REESTABLISH THE CORNER. I REMONUMENTED THIS CORNER WITH A 2" x 30" STAINLESS STEEL PIPE WITH A 4" GRANT COUNTY BRASS CAP SET 12 INCHES BELOW GRADE.

(C) IN THE PLAN VIEW DRAWING BELOW, PROVIDE REFERENCE TIES TO AT LEAST 4 WITNESS MONUMENTS. WITNESS MONUMENTS SHALL BE MADE OF CONCRETE, NATURAL STONE, IRON, BEARING TREES OR ANY OTHER EQUALLY DURABLE MATERIAL. DEPICT THE RELEVANT MONUMENTS AND REFERENCE TIES WITH SUFFICIENT DETAIL TO ENABLE ACCURATE RELOCATION OF THE CORNER IF THE CORNER MONUMENT IS DISTURBED.

(D)

LEGEND:

- SET 2" x 30" STAINLESS STEEL PIPE w/ 4" GRANT COUNTY BRASS CAP
- 3/4" x 24" IRON ROD SET AS ACCESSORY
- ⊞ "SURVEY MARKER" SIGN 174' +/- NORTH OF MONUMENT



(E) DESCRIBE ANY MATERIAL DISCREPANCY BETWEEN THE LOCATION OF THE CORNER AS RESTORED OR REESTABLISHED AND THE LOCATION OF THAT CORNER AS PREVIOUSLY RESTORED OR REESTABLISHED BY DISTANCE AND DIRECTION. SHOW THE DISCREPANCY ON THE PLAN VIEW DRAWING UNDER (D), ABOVE. SHOW THE DISTANCES BETWEEN THE CORNER AS PREVIOUSLY RESTORED OR REESTABLISHED AND (1) THE CORNER AS RESTORED OR REESTABLISHED, AND (2) TO AT LEAST 2 OF THE WITNESS MONUMENTS SHOWN ON THE DRAWING IN (D) ABOVE.

N/A

(F) WAS THE CORNER RESTORED THROUGH ACCEPTANCE OF (1) AN OBLITERATED EVIDENCE LOCATION, OR (2) A FOUND PERPETUATED LOCATION?

(2) A FOUND PERPETUATED LOCATION.

(G&H) WAS THE CORNER REESTABLISHED THROUGH LOST CORNER PROPORTIONATE METHODS? IF SO, SHOW THE METHOD, INCLUDING THE DIRECTIONS AND DISTANCES TO OTHER PUBLIC LAND SURVEY CORNERS USED AS EVIDENCE OR USED FOR PROPORTIONING IN DETERMINING THE CORNER LOCATION.

N/A

CORNER HISTORY

THE ORIGINAL GOVERNMENT CORNER WAS ESTABLISHED BY ROBERT CLARK JR. IN THE FIRST QUARTER OF 1833.

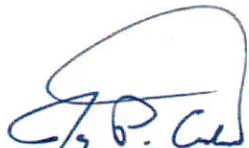
IN A TIE SHEET DATED 12 JANUARY 1998, LARRY AUSTIN REPORTS SETTING A 0.75" x 24" IRON ROD AT THE THE RECORDED GOVERNMENT OFFSET FROM THE NORTHEAST CORNER OF SECTION 24, T4N, R3W.

LARRY AUSTIN NOTES RECOVERING THE 3/4" IRON ROD IN PLATS OF SURVEY DATED 2 MARCH 1998, 16 MARCH 1998, 9 OCTOBER 1999 AND 31 OCTOBER 2003.

AARON AUSTIN FOUND A #6 REBAR AT THIS CORNER IN A PLAT OF SURVEY DATED 23 AUGUST 2012.

AFFIX LAND SURVEYOR SEAL

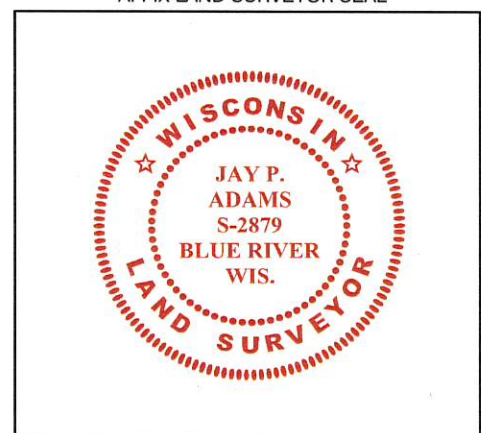
(I) I, JAY P. ADAMS, P.L.S. - 2879, CERTIFY THAT THE CORNER LOCATION SHOWN ON THIS RECORD WAS DETERMINED BY ME OR UNDER MY DIRECTION AND CONTROL AND THAT THIS U.S. PUBLIC LAND SURVEY MONUMENT RECORD IS CORRECT AND COMPLETE TO THE BEST OF MY KNOWLEDGE AND BELIEF.



28 NOVEMBER 2018

SIGNATURE

DATE

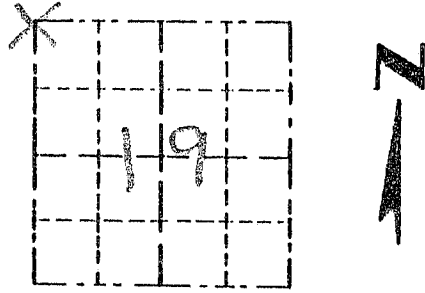


Survey Monument Record

TYPE OF MONUMENT 3/4" x 24" IRON
BAR SET

CORNER NO. _____
 SECTION 19
 TOWN 4N
 RANGE 2W

FIELD BOOK: 97-02
 PAGE _____



LOCATION
 (Indicated by "X")

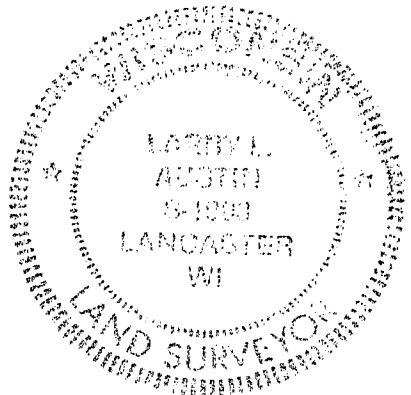
BASIS FOR MONUMENT LOCATION

(Use reverse side if necessary)

Show info such as: History of corner, with reference to Vol. and pg., dates, surveyor; exact description of monument replaced; if location computed, by taped or EDM traverse; landowner, remarks, etc.

CORNER SET IN 1833 BY ROBERT CLARK. NO RECORD OF CORNER FOUND SINCE ORIGINAL SURVEYS; CORNER SET AT THE RECORDED OFFSET FROM THE NE CORNER OF SECTION 24 T4N R3W, AND ON THE EAST LINE OF SECTION 24; VERIFIED THIS LOCATION BY EDM TRAVERSE OF THE AREA

SEAL:



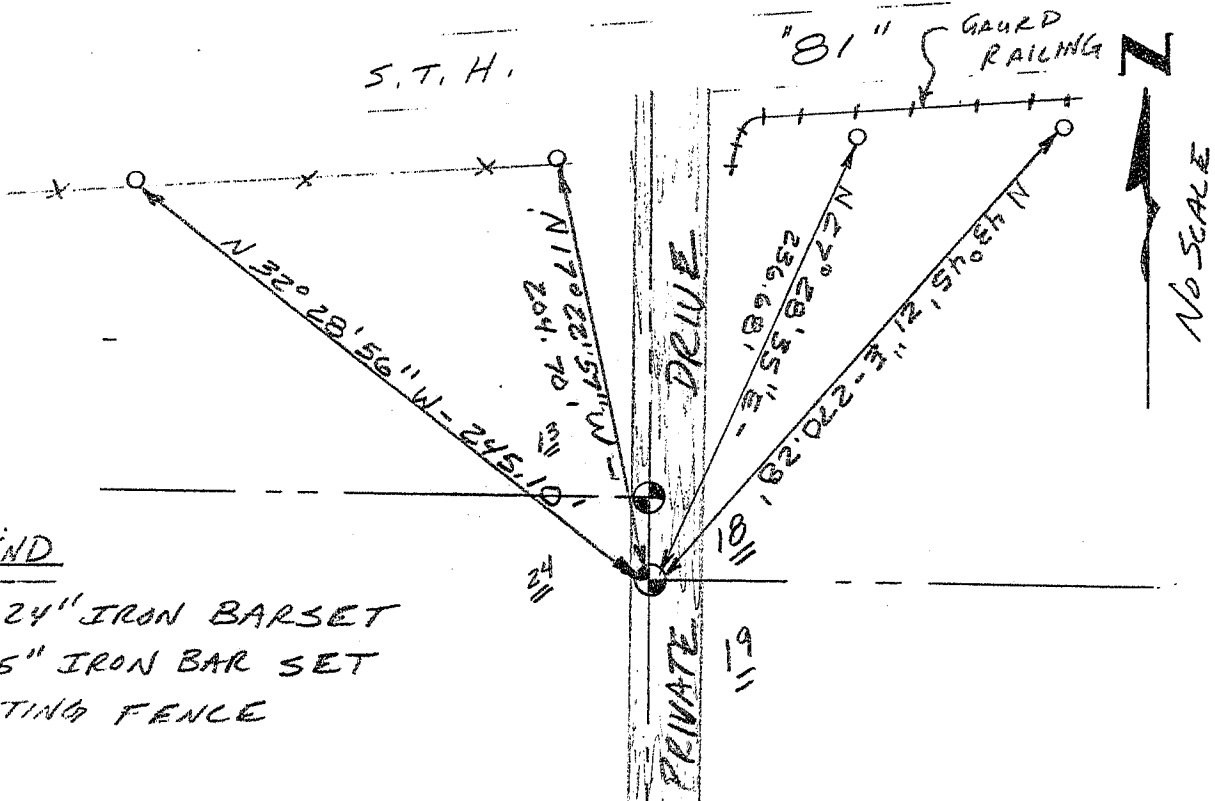
CERTIFIED CORRECT

Larry L. Austin
 Registered Land Surveyor

DATE: 1-12-98

TIE SKETCH

Show at least three (3) ties and monument



LEGEND

- ⊙ 3/4" x 24" IRON BARSET
- 1/2" x 15" IRON BAR SET
- XX EXISTING FENCE