

U.S. PUBLIC LAND SURVEY MONUMENT RECORD - GRANT COUNTY, WI

Section 18, Town 4 North Range 2 West, Town of Ellenboro (a)

NOTE: This form is intended and designed to fulfill all requirements of the Wisconsin Administrative Code Chapter A-E 7.08, U.S. Public Land Survey Monument Record (3) (a) (b) (c) (d) (e) (f) (g) (h) (i).

CERTIFICATE: (i)

I, Aaron J. Austin, Wisconsin Professional Land Surveyor, do hereby certify that the corner location on this record was determined by me and/or under my direct supervision and that this U.S. Public Land Survey Monument Record is correct and complete to the best of my knowledge and belief.

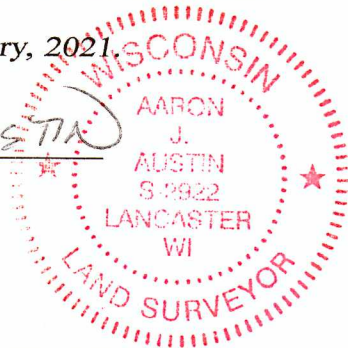
Dated this 24th day of February, 2021.

Aaron J. Austin (handwritten signature)

Aaron J. Austin, S-2922



Grant County Coordinates: NAD 83 (2011) Northing: 511,044.92 Easting: 834,090.12



HISTORY OF CORNER ESTABLISHMENT:

Larry Austin set a Grant County Aluminum Monument and prepared a Survey Monument Record dated 2-28-1995.

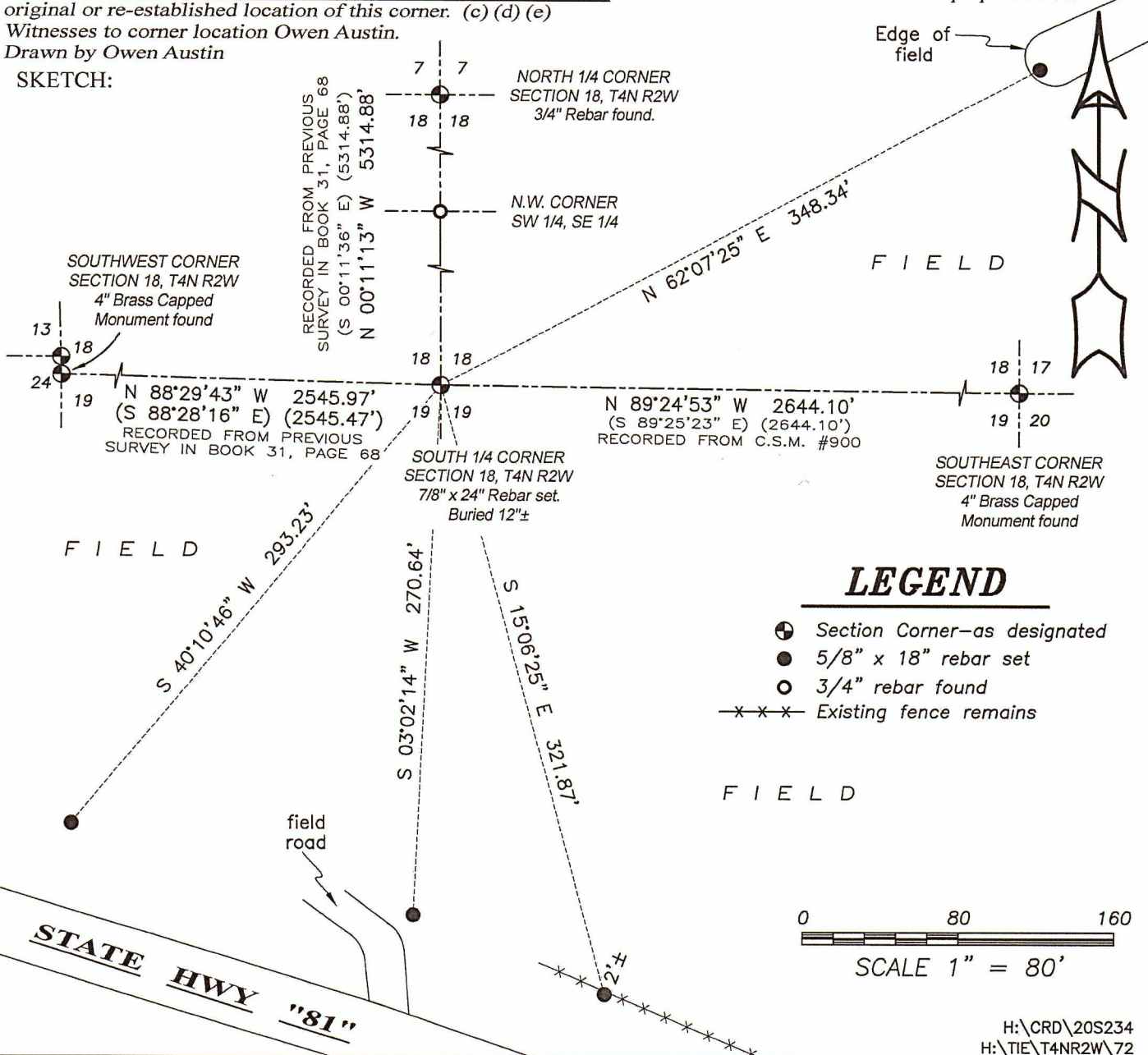
DESCRIPTION OF CORNER EVIDENCE FOUND: (b) (f) (g) (h)

The monument and witness corners were not recovered. I reset the corner at the recorded dimension of 2644.10 feet from the Southeast corner of Section 18 and the recorded dimension of 5314.88 feet from the North 1/4 corner of Section 18. I verified this location with a found rebar at the Northwest corner of the SW 1/4 of the SE 1/4. Corner location was verified with G.P.S. and E.D.M. methods.

DESCRIPTION OF CORNER AND WITNESS MONUMENTS, references and accessories used to perpetuate the original or re-established location of this corner. (c) (d) (e)

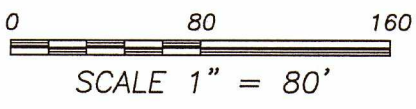
Witnesses to corner location Owen Austin. Drawn by Owen Austin

SKETCH:



LEGEND

- Section Corner—as designated
5/8" x 18" rebar set
3/4" rebar found
Existing fence remains

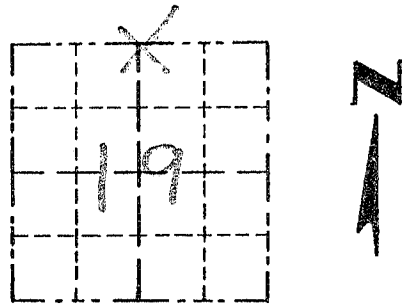


Survey Monument Record

TYPE OF MONUMENT 3/4" X 24" IRON  
BAR SET

CORNER NO. 72  
SECTION 19  
TOWN 4N  
RANGE 2W

FIELD BOOK: 97-02  
PAGE \_\_\_\_\_



LOCATION  
(Indicated by "X")

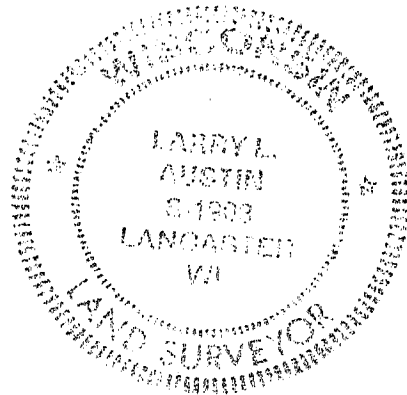
BASIS FOR MONUMENT LOCATION

(Use reverse side if necessary)

Show info such as: History of corner, with reference to Vol. and pg., dates, surveyor; exact description of monument replaced; if location computed, by taped or EDM traverse; landowner, remarks, etc.

SEAL:

CORNER SET IN 1833 BY ROBERT CLARK. NO RECORD OF CORNER FOUND SINCE ORIGINAL SURVEYS; CORNER SET AT AN OCCUPIED LOCATION. VERIFIED THIS LOCATION USING EDM METHODS.



CERTIFIED CORRECT

Larry L. Austin  
Registered Land Surveyor

DATE: 1-12-98

TIE SKETCH

Show at least three (3) ties and monument

LEGEND

- ⊕ 3/4" X 24" IRON BAR SET
- 1/2" X 15" IRON BAR SET
- xx EXISTING FENCE

