

42066

U.S. PUBLIC LAND SURVEY MONUMENT RECORD - GRANT COUNTY, WI

Section 15, Town 4 North Range 2 West, Town of Ellenboro (a)

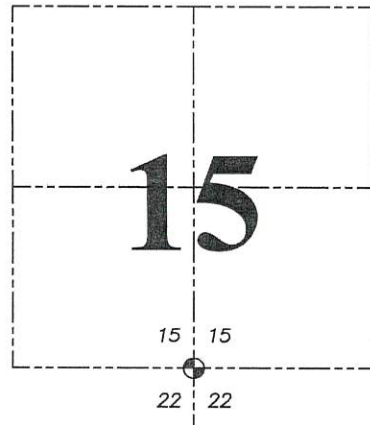
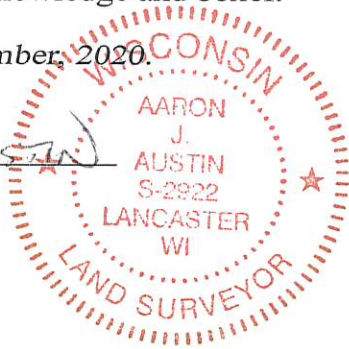
NOTE: This form is intended and designed to fulfill all requirements of the Wisconsin Administrative Code Chapter A-E 7.08, U.S. Public Land Survey Monument Record (3) (a) (b) (c) (d) (e) (f) (g) (h) (i).

CERTIFICATE: (i)

I, Aaron J. Austin, Wisconsin Professional Land Surveyor, do hereby certify that the corner location on this record was determined by me and/or under my direct supervision and that this U.S. Public Land Survey Monument Record is correct and complete to the best of my knowledge and belief.

Dated this 28th day of December, 2020.

Aaron J. Austin
Aaron J. Austin, S-2922



⊕ = CORNER LOCATION

Grant County Coordinates:
NAD 83 (2011)
Northing: 510,924.29
Easting: 849,953.57

HISTORY OF CORNER ESTABLISHMENT:

Original corner was set in by Robert Clark in 1833.
John Everett found the original corner on a Survey dated 1852, filed in Book B, Page 291.
Charles Sampson tied to the corner on a Survey dated 1893, filed in Book D, Page 225.
I set a 1" rebar with a Grant County Aluminum Cap and prepared a Survey Monument Record dated 6-1-2012.

DESCRIPTION OF CORNER EVIDENCE FOUND: (b) (f) (g) (h)

The previous monument was set at the wrong location and tied by my crew in 2012. Upon preparing another survey in this area, I found this monument to have been set at an existing fence corner and not the location I computed it to be in 2012. (The erroneous monument location was not utilized in the previous surveys prepared by me in Book 31, Page 42 and Book 41, Page 7). I determined the corner location in 2012 by utilizing the retracement of the Center of Section 15 and a stone found at the Northeast corner of the SE 1/4 of the SW 1/4 (per Sampson survey in 1893). This location is verified by measurements taken to the previous surveys I prepared, therefore, I moved the erroneous monument and set four new ties accordingly. Corner location was verified with G.P.S. and E.D.M. methods.

DESCRIPTION OF CORNER AND WITNESS MONUMENTS,

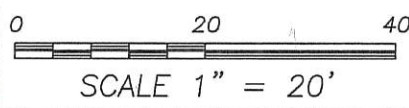
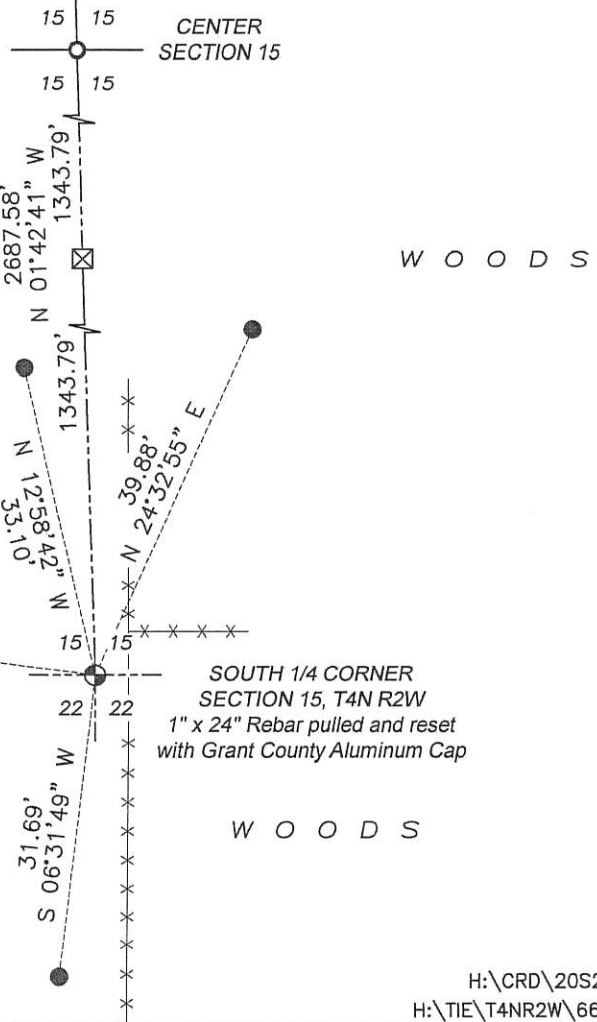
references and accessories used to perpetuate the original or re-established location of this corner. (c) (d) (e)
Witnesses to corner location Shane Austin, Owen Austin.
Drawn by Owen Austin

SKETCH:

LEGEND

- ⊕ Section Corner—as designated
- ⊠ Existing stone
- 3/4" x 18" rebar set
- x-x-x- Existing fence

references and accessories used to perpetuate the



U.S. PUBLIC LAND SURVEY MONUMENT RECORD - GRANT COUNTY, WI

Section 22, Town 4 North Range 2 West, Town of Ellenboro

CERTIFICATE:

I, Aaron J. Austin, do hereby certify that the corner location on this record was determined by me and/or under my direct supervision and that this U.S. Public Land Survey Monument Record is correct and complete to the best of my knowledge and belief.

Dated this 1st day of June, 2012

Aaron J. Austin
 Aaron J. Austin, S-2922



● = CORNER LOCATION

HISTORY OF CORNER ESTABLISHMENT:

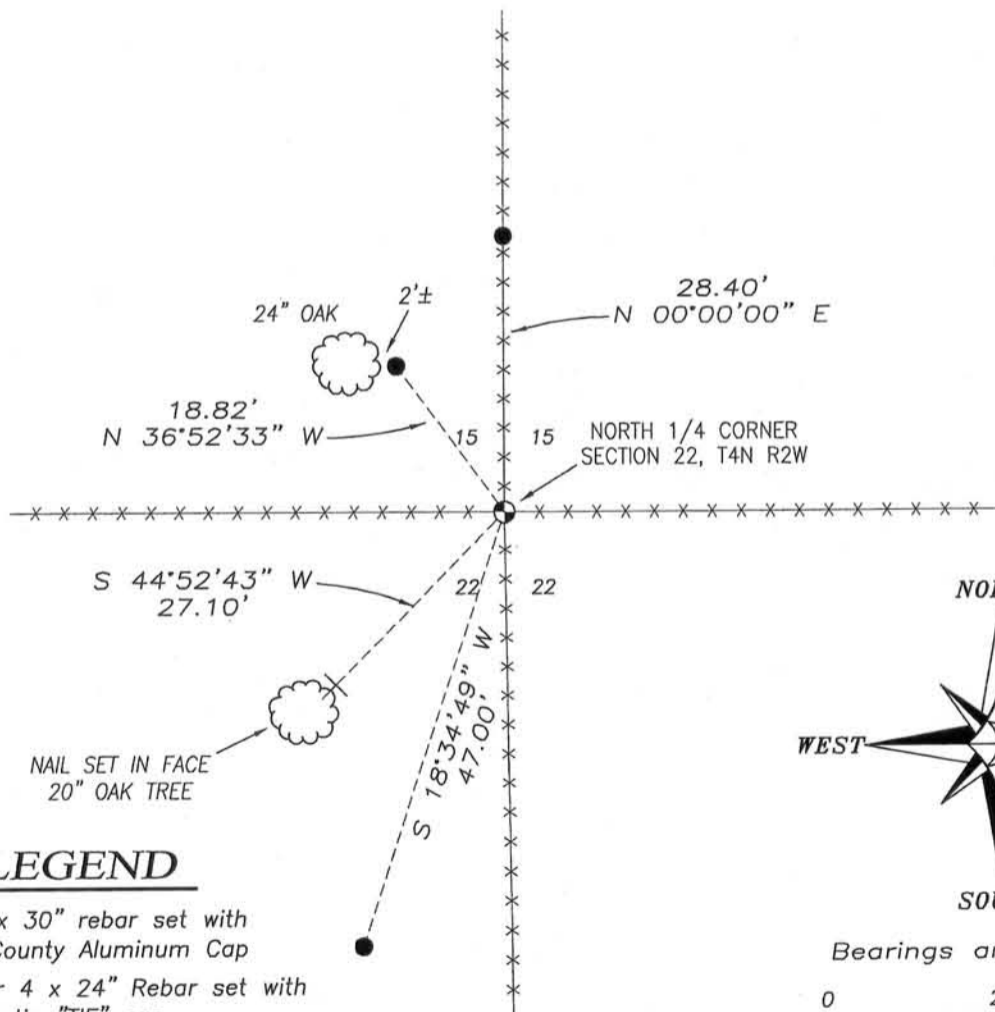
Corner was originally set by Robert Clark in 1833. John Everett found the original corner 1852. Charles Sampson also found the corner in 1893. No other record found for this corner.

DESCRIPTION OF CORNER EVIDENCE FOUND:

The survey by Sampson in 1893 stated that both bearing trees were gone. No evidence of the corner was found and accepted an existing fence corner. This location was verified by G.P.S. and E.D.M. methods.

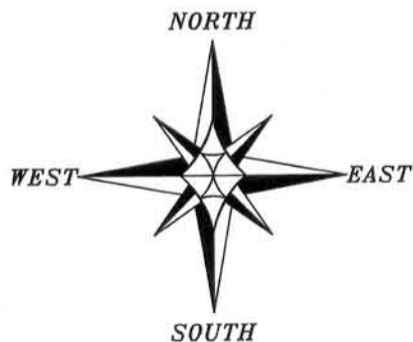
DESCRIPTION OF CORNER AND WITNESS MONUMENTS, references and accessories used to perpetuate the original or re-established location of this corner. Witnesses to corner location Bobby Sedgwick & Shelby Blindert

SKETCH:

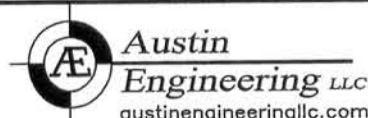
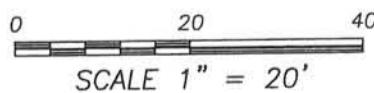


LEGEND

- No. 8 x 30" rebar set with Grant County Aluminum Cap
- Number 4 x 24" Rebar set with red plastic "TIE" cap
- x-x- Existing fence



Bearings are assumed.



4211 HWY 81 E, LANCASTER, WI 53813
 PHONE: 608-723-6363 FAX: 608-723-6702

JOB NO: 12s056
 G:\T4NR2W\T4NR2W
 H:\TIE\T4NR2W\66

FIELDBOOK: 1201
 DRAWN BY: AJ AUSTIN
 CREW: BS-SB