

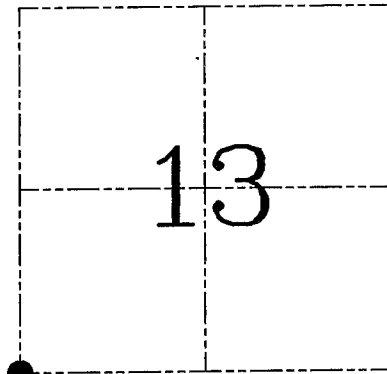
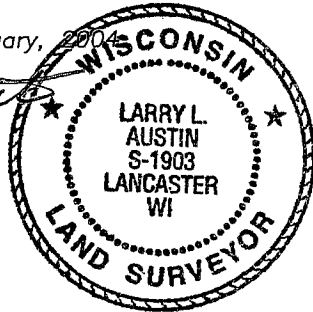
**U.S. PUBLIC LAND SURVEY MONUMENT RECORD – GRANT COUNTY, WI**  
**Section 13, Town 4 North Range 2 West, Town of Ellenboro**

CERTIFICATE

I, Larry L. Austin, do hereby certify that the corner location on this record was determined by me and/or under my direct supervision and that this U.S. public land survey monument record is correct and complete to the best of my knowledge and belief.

Dated this 25th day of February, 2004

*Larry L. Austin*  
 Larry L. Austin S-1903



● = CORNER LOCATION

HISTORY OF CORNER ESTABLISHMENT

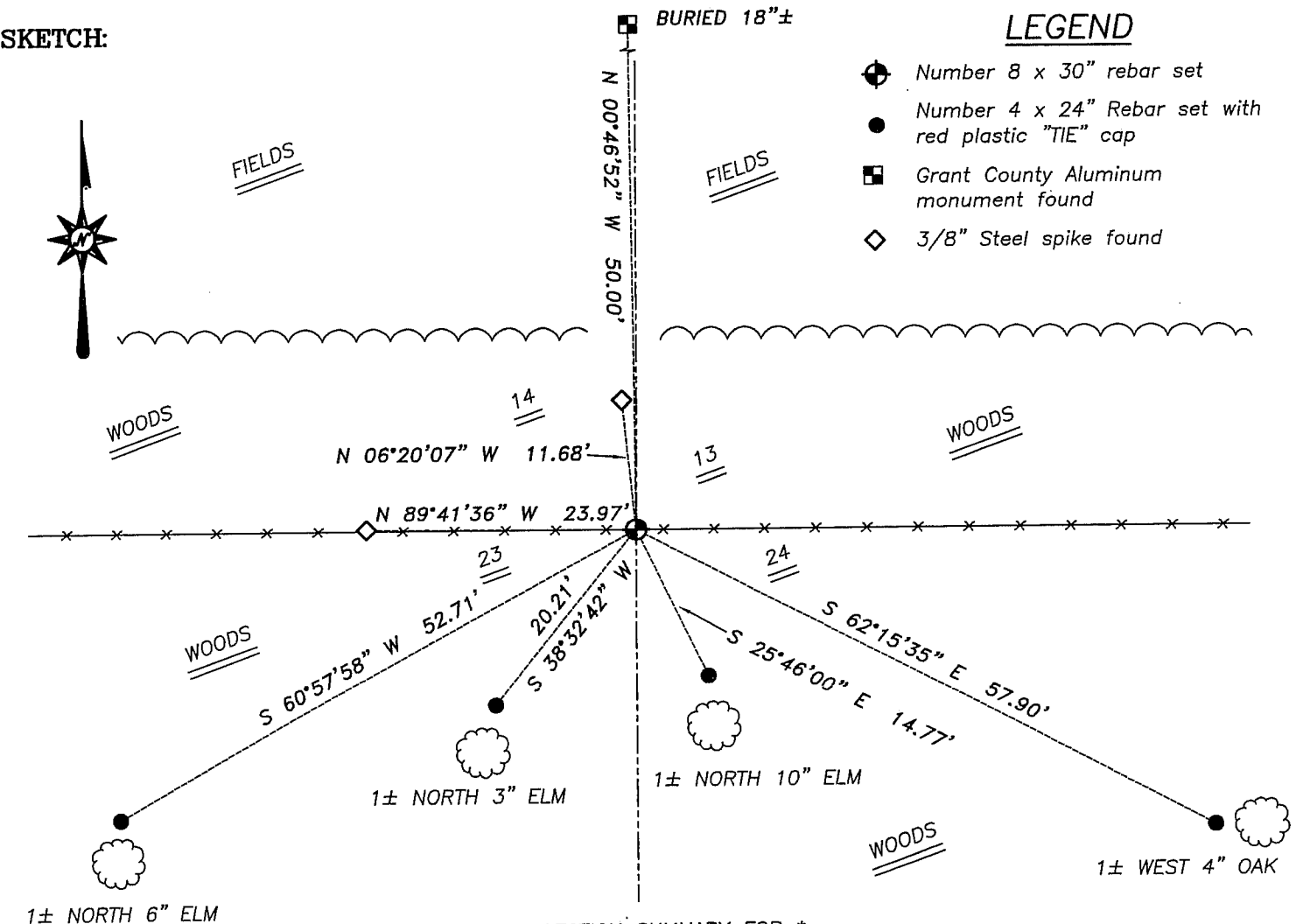
Corner was originally set in 1833 by Robert Clark.  
 In 1993 I set a Grant County Aluminum Monument.

DESCRIPTION OF CORNER EVIDENCE FOUND

I found the Grant County Aluminum Monument. I did not accept it's location after measuring to adjoining corners at occupied locations within this section. I accepted an East-West fence for Northing. Easting was established based on proportionate measurements to adjoining corners. I verified this location using EDM & GPS methods.

DESCRIPTION OF CORNER AND WITNESS MONUMENTS, references and accessories used to perpetuate the original or re-established location of this corner. Witnesses to corner location Bobby Sedgwick & Shelby Blindert & Brad Digman

**SKETCH:**

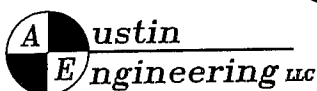


**LEGEND**

- ⊕ Number 8 x 30" rebar set
- Number 4 x 24" Rebar set with red plastic "TIE" cap
- Grant County Aluminum monument found
- ◇ 3/8" Steel spike found

\* SEE SECTION SUMMARY FOR \*  
 RELATIONSHIP TO AREA CORNERS

SKETCH NOT TO SCALE



4211 HWY 81 E, LANCASTER, WI 53813  
 PHONE 608-723-6363 FAX 608-723-6702

JOB NUMBER 04S354  
 FIELDBOOK: TSDR, 2231  
 G:\T4NR2W\24B  
 H:\TIE\T4NR2W\63

DRAWN BY: SW AUSTIN  
 APPROVED: LL AUSTIN

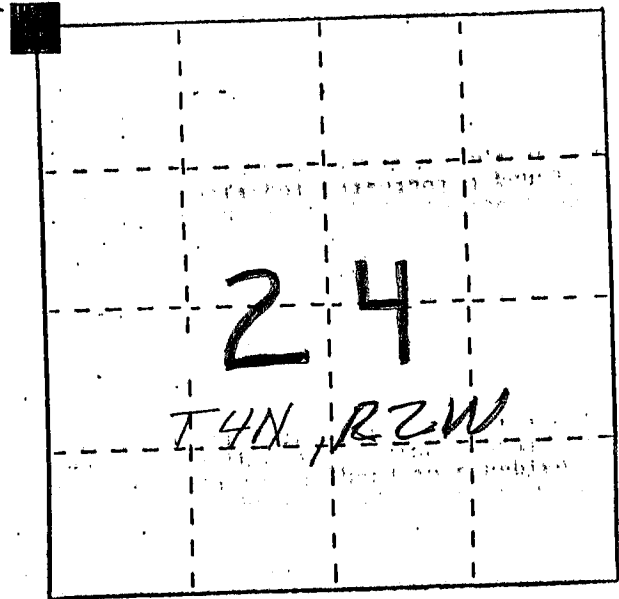
# U. S. PUBLIC LAND SURVEY MONUMENT RECORD.

**INSTRUCTIONS:** This record shall show the location of the corner and shall include all of the following nine elements (a through i).

(a) Identify the corner by reference to the U.S. public land survey system.

■ = Corner monument restored.

NW CORNER, SEC. 24  
 T4N, R2W, ELLENBORO  
 TWP, OF THE 4TH P.M.  
 GRANT COUNTY, WI



(b) Describe any record evidence, monument evidence, occupational evidence, testimonial evidence or any other material evidence you considered, and whether the monument was found or placed.

MONUMENT WAS PLACED; E-W LOCATION DETERMINED FROM FENCE BRACE REMNANTS; N-S LOCATION DETERMINED BY PROPORTIONATE MEAS.; VERIFIED BY TESTIMONIAL EVIDENCE FROM LOCAL RESIDENT.

(c) In the plan view drawing below, provide reference ties to at least 4 witness monuments, or, if the location is within a municipality, to at least 2 witness monuments. (Witness monuments shall be made of concrete, natural stone, iron or other equally durable material.) Describe witness monuments.

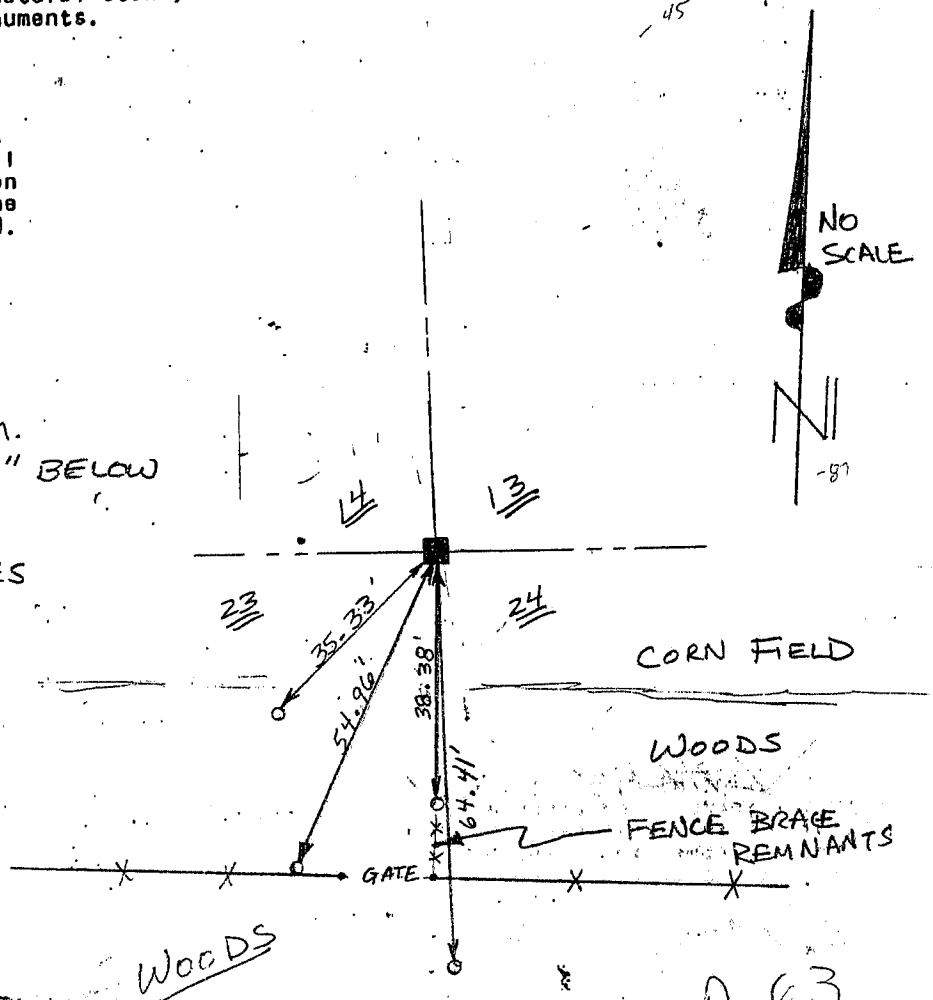
(d) Show a plan view drawing depicting the relevant monuments and reference ties which is sufficient in detail to enable accurate relocation of the corner monument if the corner monument is disturbed. Indicate north.

LEGEND

■ GRANT COUNTY ALUM. MON. W/ CAP SET 18" BELOW SURFACE.

○ 3/8" x 12" STEEL SPIKES SET FLUSH AS TIES

— X — X — EXISTING FENCE



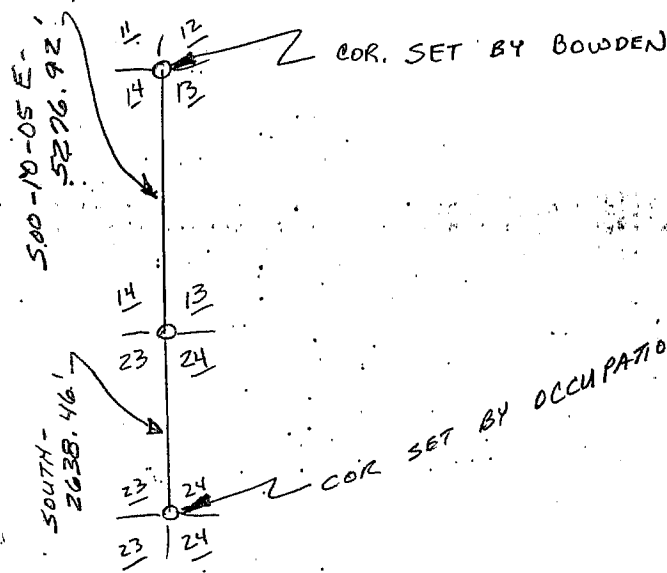
(e) Describe any material discrepancy between the location of corner as restored or reestablished and the location of that corner as previously restored or reestablished by distance and direction. Show the discrepancy on the plan view drawing under (d), above. Show the distances between the corner as previously restored or reestablished and (1) the corner as restored or reestablished, and (2) to at least 2 of the witness monuments shown on the drawing in (d), above.

NOT APPLICABLE

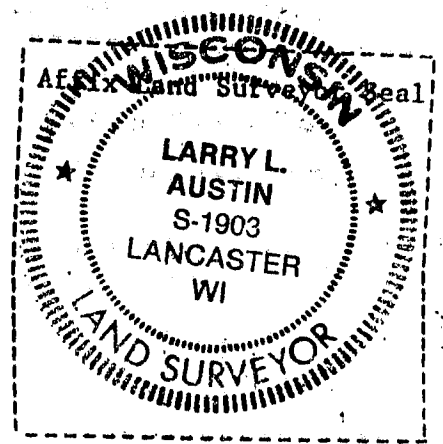
(f) Was the corner restored through acceptance of (1) an obliterated evidence location, or, (2) a found perpetuated location?

(2) FOR E-W LOCATION

(g&h) Was the corner reestablished through lost corner proportionate methods? If so, show the method, including the directions and distances to other public land survey corners used as evidence or used for proportioning in determining the corner location?



YES IN N-S DIRECTION



(i) I, LARRY L. AUSTIN

(type or print name) certify that the corner location shown on this record was determined by me or under my direction and control and that this U.S. Public Land Survey Monument Record is correct and complete to the best of my knowledge and belief.

Larry L. Austin  
Signature

8/13/93  
Date