

U.S. PUBLIC LAND SURVEY MONUMENT RECORD – GRANT COUNTY, WI

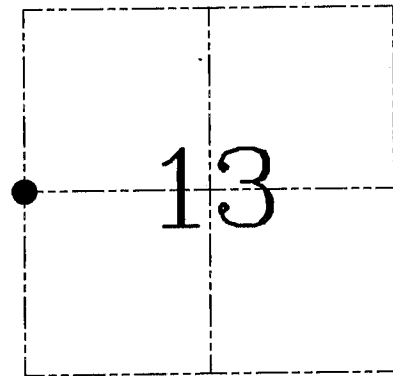
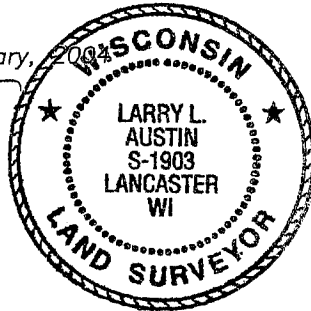
Section 13, Town 4 North Range 2 West, Town of Ellenboro

CERTIFICATE

I, Larry L. Austin, do hereby certify that the corner location on this record was determined by me and/or under my direct supervision and that this U.S. public land survey monument record is correct and complete to the best of my knowledge and belief.

Dated this 25th day of February, 2004

Larry L. Austin
Larry L. Austin S-1903



● = CORNER LOCATION

HISTORY OF CORNER ESTABLISHMENT

Corner was originally set in 1833 by Robert Clark.
In 1995 I set the corner. No other record of the corner was found.

DESCRIPTION OF CORNER EVIDENCE FOUND

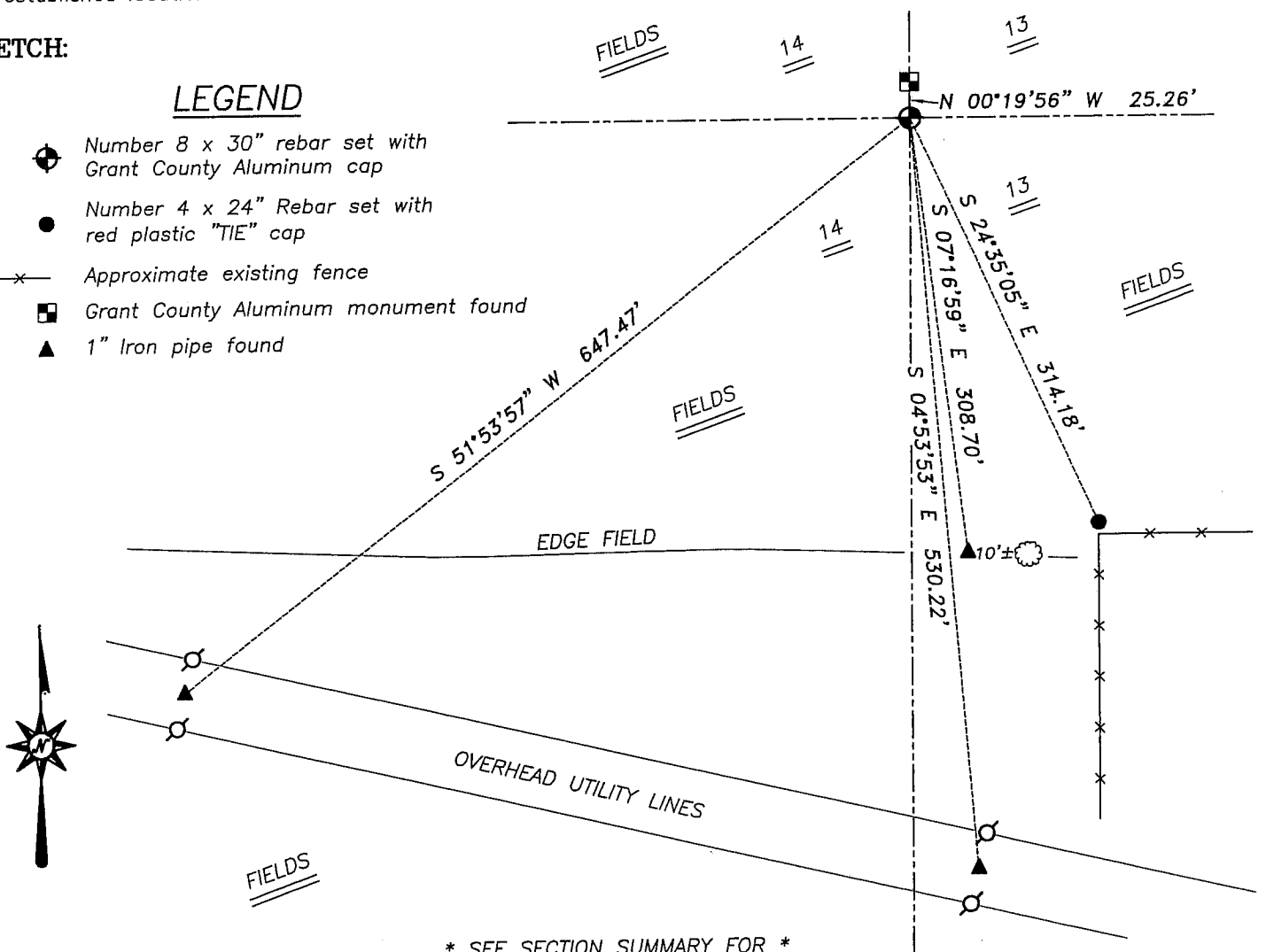
I found the existing Grant County Aluminum monument. I did not accept it's location due to the movement of the Southwest corner of Section 13. I reset the corner proportionately between the Northwest and Southwest corners. Verified this location using EDM & GPS methods.

DESCRIPTION OF CORNER AND WITNESS MONUMENTS, references and accessories used to perpetuate the original or re-established location of this corner. Witnesses to corner location Bobby Sedgwick & Shelby Blindert & Brad Digman

SKETCH:

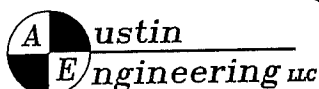
LEGEND

- ⊕ Number 8 x 30" rebar set with Grant County Aluminum cap
- Number 4 x 24" Rebar set with red plastic "TIE" cap
- x- Approximate existing fence
- ▣ Grant County Aluminum monument found
- ▲ 1" Iron pipe found



* SEE SECTION SUMMARY FOR *
RELATIONSHIP TO AREA CORNERS

SKETCH NOT TO SCALE



4211 HWY 81 E, LANCASTER, WI 53813
PHONE 608-723-6363 FAX 608-723-6702

JOB NUMBER 04S354
FIELDBOOK: TSDR, 2231
G:\T4NR2W\24B
H:\TIE\T4NR2W\59

DRAWN BY: SW AUSTIN
APPROVED: LL AUSTIN

GRANT COUNTY

Survey Monument Record

TYPE OF MONUMENT GRANT County Alum. Mon.

STATE PLANE COORDINATES: N _____
E _____

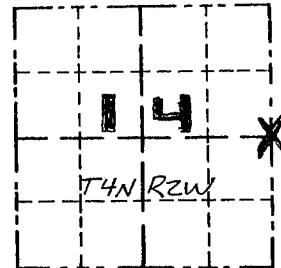
ELEVATION — M.S.L. DATUM: _____

THETA ANGLE: _____

FIELD BOOK: FB 95-14

PAGE 16

CORNER NO. 59
SECTION 14
TOWN 4N
RANGE ZW
E 1/4 Cor



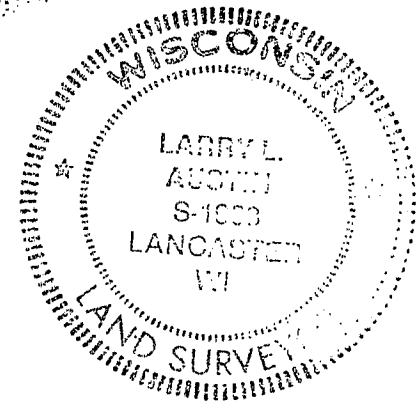
LOCATION
(Indicated by "X")

BASIS FOR MONUMENT LOCATION

(Use reverse side if necessary)

Show info such as: History of corner, with reference to Vol. and pg., dates, surveyor; exact description of monument replaced; if location computed, by taped or EDM traverse; landowner, remarks, etc.

SEAL:



CORNER WAS ORIGINALLY SET BY HARVEY PARKE IN 1833. NO RECORD FOUND SINCE ORIGINAL SURVEY. NO PHYSICAL EVIDENCE FOUND. CORNER WAS SET ON LINE BETWEEN THE NORTHEAST + SOUTHEAST CORNERS AT MIDWAY DISTANCE. AFTER EDM TRAVERSE OF THE AREA.

CERTIFIED CORRECT

Larry L. Augsten
Registered Land Surveyor

DATE: 10/5/95

TIE SKETCH

Show at least three (3) ties and monument

