

# U.S. PUBLIC LAND SURVEY MONUMENT RECORD

Section 14, Town 4 North Range 2 West, Town of Ellenboro, Grant County, Wisconsin

## CERTIFICATE

I, Larry L. Austin, do hereby certify that the corner location on this record was determined by me and/or under my direct supervision and that this U.S. public land survey monument record is correct and complete to the best of my knowledge and belief.

*Larry L. Austin*  
 Larry L. Austin, S-1903



● = CORNER LOCATION

## HISTORY OF CORNER

Corner was originally set in 1832 by Robert Clark. In 1852 John Everett tied to the original corner. In 1893 Sampson tied to the original corner (stump of one bearing tree). No other record of the corner was found.

## CORNER EVIDENCE FOUND

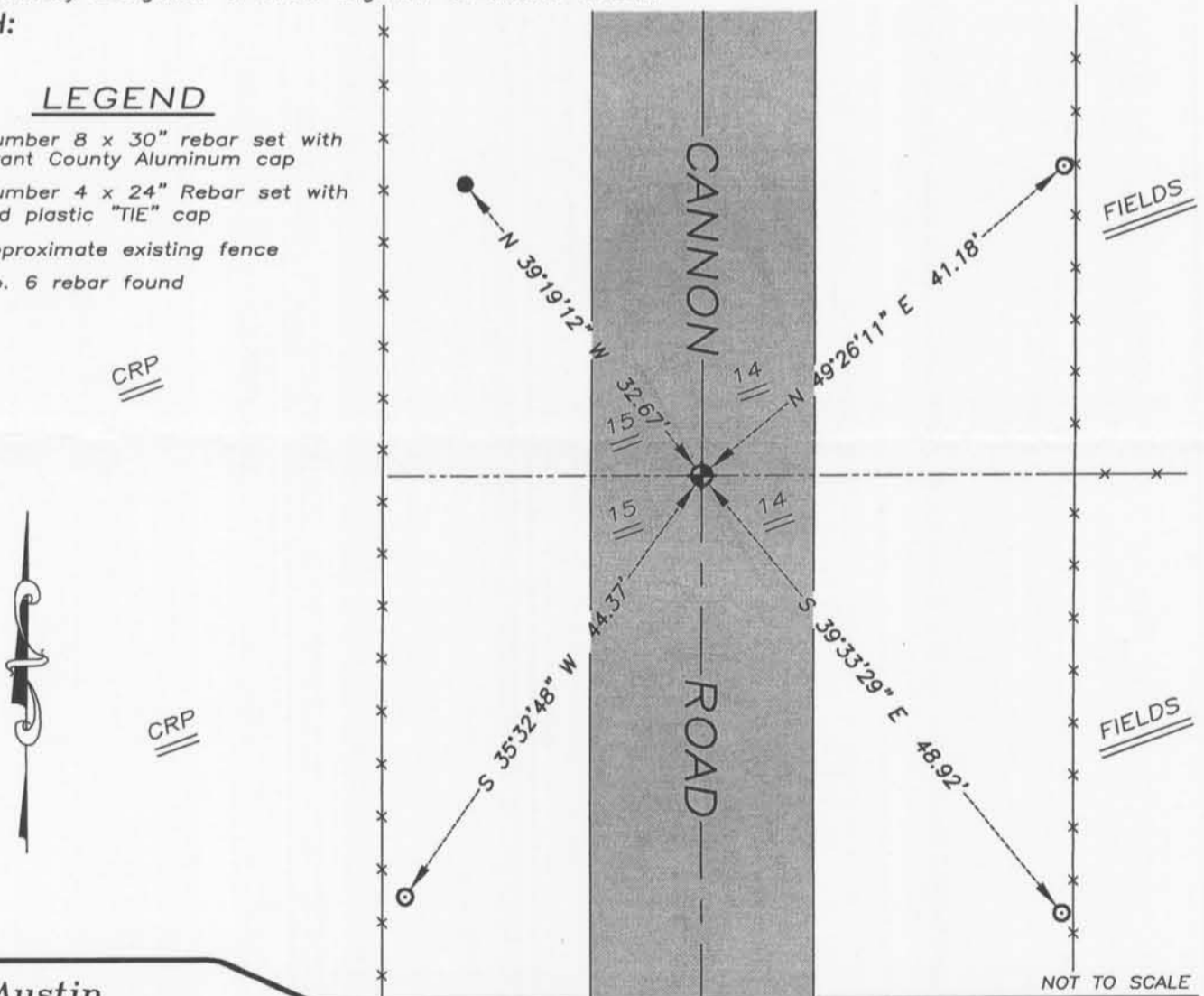
I reset the corner at an occupation location. I verified this location North and South to occupied and monumented corners using EDM & GPS methods.

DESCRIPTION OF CORNER AND WITNESS MONUMENTS, references and accessories used to perpetuate the original or re-established location of this corner. Witnesses to monument location Bobby Sedgwick & Brad Digman & Shane Austin

## SKETCH:

### LEGEND

- Number 8 x 30" rebar set with Grant County Aluminum cap
- Number 4 x 24" Rebar set with red plastic "TIE" cap
- x— Approximate existing fence
- No. 6 rebar found



**Austin Engineering LLC**

4211 HWY 81 E, LANCASTER, WI 53813  
 PHONE 608-723-6363 FAX 608-723-6702

JOB NUMBER 09S082-SAUDER  
 FIELDBOOK: TDSR, 2812  
 G:\T4NR2W\24B  
 H:\TIE\T4NR2W\58

DRAWN BY: SW AUSTIN  
 APPROVED: LL AUSTIN

58

FEB 18 2011

# GRANT COUNTY

## Survey Monument Record

TYPE OF MONUMENT HARROW TOOTH FND.

STATE PLANE COORDINATES: N \_\_\_\_\_  
E \_\_\_\_\_

ELEVATION — M.S.L. DATUM: \_\_\_\_\_

THETA ANGLE: \_\_\_\_\_

FIELD BOOK: 95-14

PAGE 17

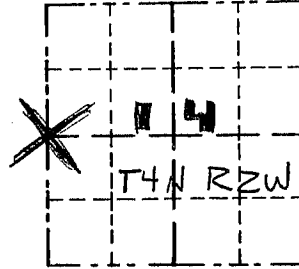
CORNER NO. 58

SECTION 14

TOWN 4N

RANGE 2W

W 1/4 Cor



LOCATION  
(Indicated by "X")

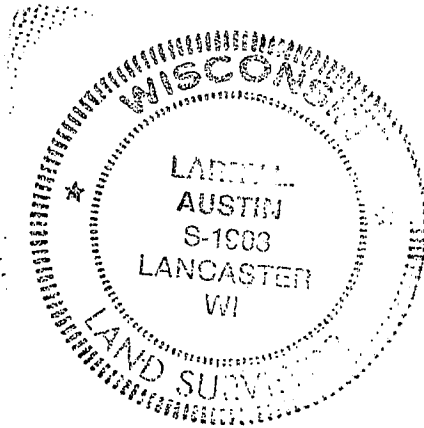
### BASIS FOR MONUMENT LOCATION

(Use reverse side if necessary)

Show info such as: History of corner, with reference to Vol. and pg., dates, surveyor; exact description of monument replaced; if location computed, by taped or EDM traverse; landowner, remarks, etc.

CORNER WAS ORIGINALLY SET BY HARVEY PARKE IN 1833. NO RECORD FOUND SINCE ORIGINAL SURVEY. FOUND HARROW TOOTH AT  $\frac{1}{2}$  OF ROAD NORTH-SOUTH AND BRACE POST EAST. ACCEPTED LOCATION AFTER EDM TRAVERSE OF THE AREA.

SEAL:



CERTIFIED CORRECT

Larry Austin  
Registered Land Surveyor

DATE: 10/5/95

### TIE SKETCH

Show at least three (3) ties and monument

