

## GRANT COUNTY U.S. PUBLIC LAND SURVEY MONUMENT RECORD

INSTRUCTIONS: THIS RECORD SHALL SHOW THE LOCATION OF THE CORNER AND SHALL INCLUDE ALL OF THE FOLLOWING ELEMENTS (A THROUGH I).

- (A) IDENTIFY THE CORNER AS REFERENCED TO THE U.S. PUBLIC LAND SURVEY SYSTEM

■ = CORNER MONUMENT RESTORED

WITNESSES TO CORNER LOCATION:

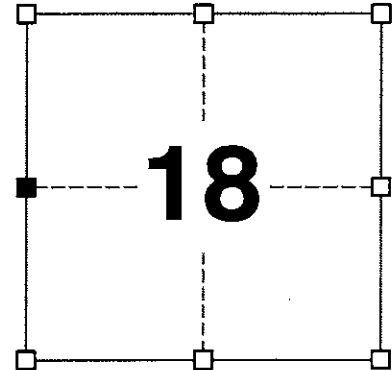
**BRADLEY A. SCHROEDER**  
**STEVEN A. ALT**

GEOGRAPHIC COORDINATES,  
NAD 83 (2011) ADJUSTMENT:

**LATITUDE:** 42° 49' 15.36876"  
**LONGITUDE:** 90° 39' 50.48527"

WISCONSIN COORDINATE REFERENCE SYSTEM (WISCRS),  
GRANT COUNTY, NAD 83 (2011) ADJUSTMENT:

**NORTHING:** 513,816.20  
**EASTING:** 831,483.43



**SECTION 18**  
TOWNSHIP 4 NORTH, RANGE 2 WEST  
TOWN OF ELLENBORO

- (B) DESCRIBE ANY RECORD EVIDENCE, MONUMENT EVIDENCE, OCCUPATIONAL EVIDENCE, TESTIMONIAL EVIDENCE OR ANY OTHER MATERIAL EVIDENCE YOU CONSIDERED, AND WHETHER THE MONUMENT WAS FOUND OR PLACED.

**I RECOVERED THE 1" REBAR WITH GRANT COUNTY ALUMINUM CAP REFERENCED BY LARRY AND AARON AUSTIN. I ACCEPTED THIS LOCATION AS THE BEST AVAILABLE EVIDENCE OF THE CORNER AND REMONUMENTED IT WITH A 2" x 30" STAINLESS STEEL PIPE WITH A 4" GRANT COUNTY BRASS CAP.**

- (C) IN THE PLAN VIEW DRAWING BELOW, PROVIDE REFERENCE TIES TO AT LEAST 4 WITNESS MONUMENTS. WITNESS MONUMENTS SHALL BE MADE OF CONCRETE, NATURAL STONE, IRON, BEARING TREES OR ANY OTHER EQUALLY DURABLE MATERIAL. DEPICT THE RELEVANT MONUMENTS AND REFERENCE TIES WITH SUFFICIENT DETAIL TO ENABLE ACCURATE RELOCATION OF THE CORNER IF THE CORNER MONUMENT IS DISTURBED.

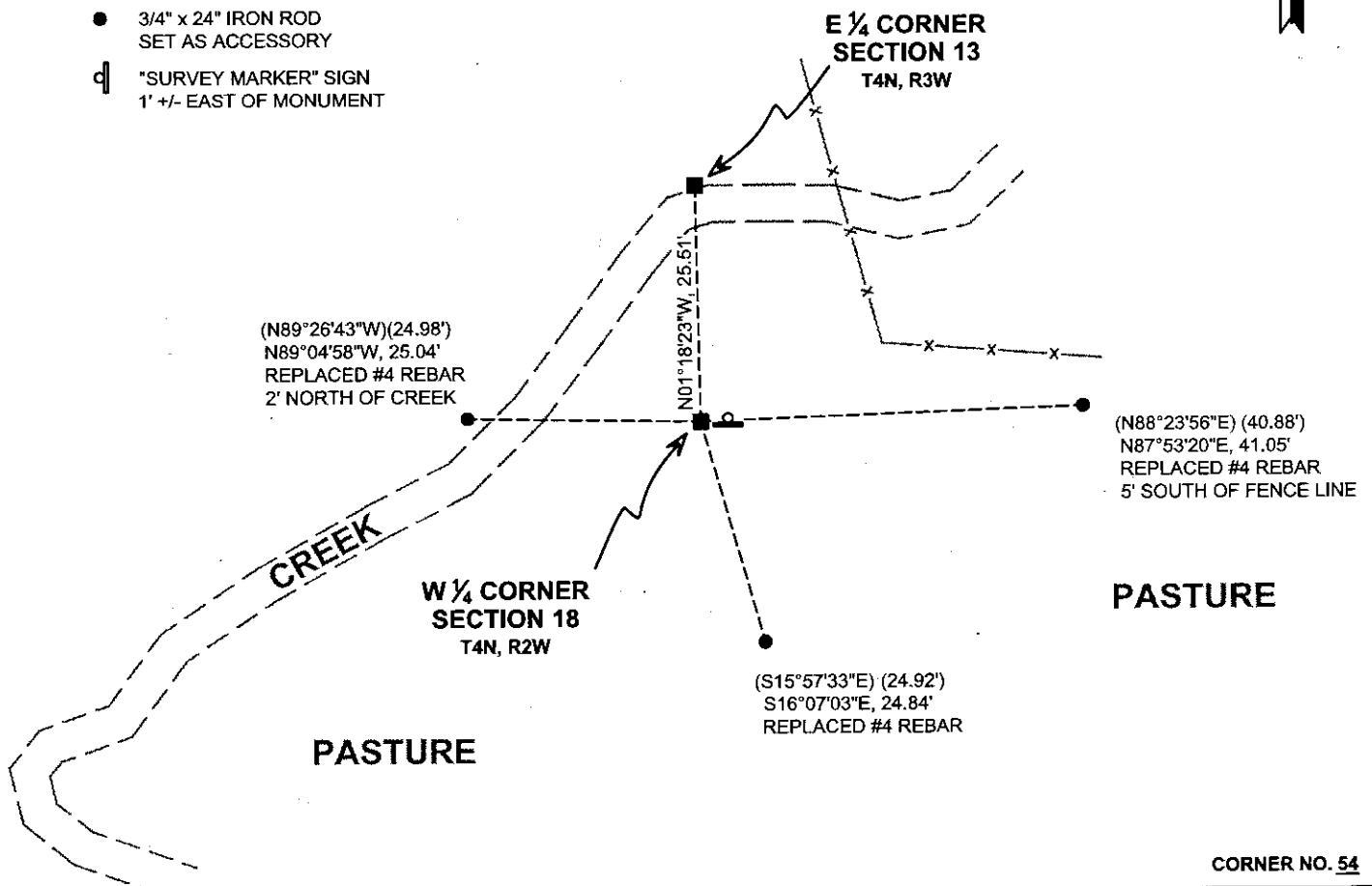
- (D)

**WOODS**

**LEGEND:**

- SET 2" x 30" STAINLESS STEEL PIPE w/ 4" GRANT COUNTY BRASS CAP
- 3/4" x 24" IRON ROD SET AS ACCESSORY
- "SURVEY MARKER" SIGN 1' +/- EAST OF MONUMENT

**WOODS**



(E) DESCRIBE ANY MATERIAL DISCREPANCY BETWEEN THE LOCATION OF THE CORNER AS RESTORED OR REESTABLISHED AND THE LOCATION OF THAT CORNER AS PREVIOUSLY RESTORED OR REESTABLISHED BY DISTANCE AND DIRECTION. SHOW THE DISCREPANCY ON THE PLAN VIEW DRAWING UNDER (D), ABOVE. SHOW THE DISTANCES BETWEEN THE CORNER AS PREVIOUSLY RESTORED OR REESTABLISHED AND (1) THE CORNER AS RESTORED OR REESTABLISHED, AND (2) TO AT LEAST 2 OF THE WITNESS MONUMENTS SHOWN ON THE DRAWING IN (D) ABOVE.

N/A

(F) WAS THE CORNER RESTORED THROUGH ACCEPTANCE OF (1) AN OBLITERATED EVIDENCE LOCATION, OR (2) A FOUND PERPETUATED LOCATION?

(2) A FOUND PERPETUATED LOCATION.

(G&H) WAS THE CORNER REESTABLISHED THROUGH LOST CORNER PROPORTIONATE METHODS? IF SO, SHOW THE METHOD, INCLUDING THE DIRECTIONS AND DISTANCES TO OTHER PUBLIC LAND SURVEY CORNERS USED AS EVIDENCE OR USED FOR PROPORTIONING IN DETERMINING THE CORNER LOCATION.

N/A

CORNER HISTORY

THIS CORNER WAS NOT ESTABLISHED BY THE ORIGINAL GOVERNMENT SURVEY.

IN A TIE SHEET DATED 26 MAY 1998, LARRY AUSTIN REPORTS SETTING A 1" x 30" IRON ROD WITH AN ALUMINUM CAP AT A LOCATION OF OCCUPATIONAL EVIDENCE.

LARRY AUSTIN NOTES RECOVERING THE 1" IRON ROD AND ALUMINUM CAP IN PLATS OF SURVEY DATED 2 MARCH 1998, 16 MARCH 1998, 9 OCTOBER 1999 AND IN CERTIFIED SURVEY MAPS DATED 15 JULY 2002 AND 14 MARCH 2008.

LARRY AUSTIN FILED AN UPDATED TIE SHEET FOR THE 1" REBAR AND ALUMINUM CAP ON 10 MAY 2008.

AARON AUSTIN FOUND A 1" REBAR WITH AN ALUMINUM CAP AT THIS CORNER IN A PLAT OF SURVEY DATED 23 AUGUST 2012.

AFFIX LAND SURVEYOR SEAL

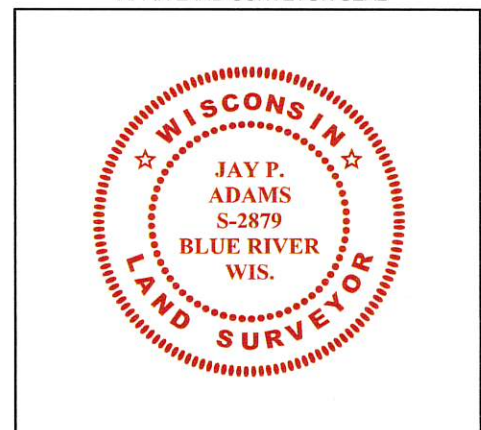
(I) I, JAY P. ADAMS, P.L.S. - 2879, CERTIFY THAT THE CORNER LOCATION SHOWN ON THIS RECORD WAS DETERMINED BY ME OR UNDER MY DIRECTION AND CONTROL AND THAT THIS U.S. PUBLIC LAND SURVEY MONUMENT RECORD IS CORRECT AND COMPLETE TO THE BEST OF MY KNOWLEDGE AND BELIEF.



SIGNATURE

28 NOVEMBER 2018

DATE

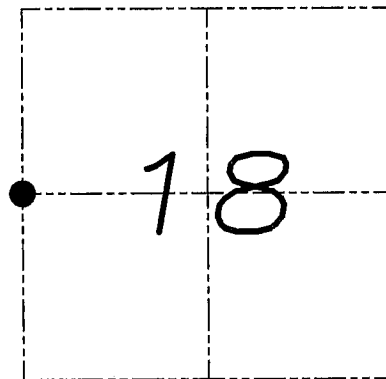


# U.S. PUBLIC LAND SURVEY MONUMENT RECORD

Section 18, Town 4 North Range 2 West, Town of Ellenboro, Grant County, Wisconsin

## CERTIFICATE

I, Larry L. Austin, do hereby certify that the corner location on this record was determined by me and/or under my direct supervision and that this U.S. public land survey monument record is correct and complete to the best of my knowledge and belief.



● = CORNER LOCATION



## HISTORY OF CORNER

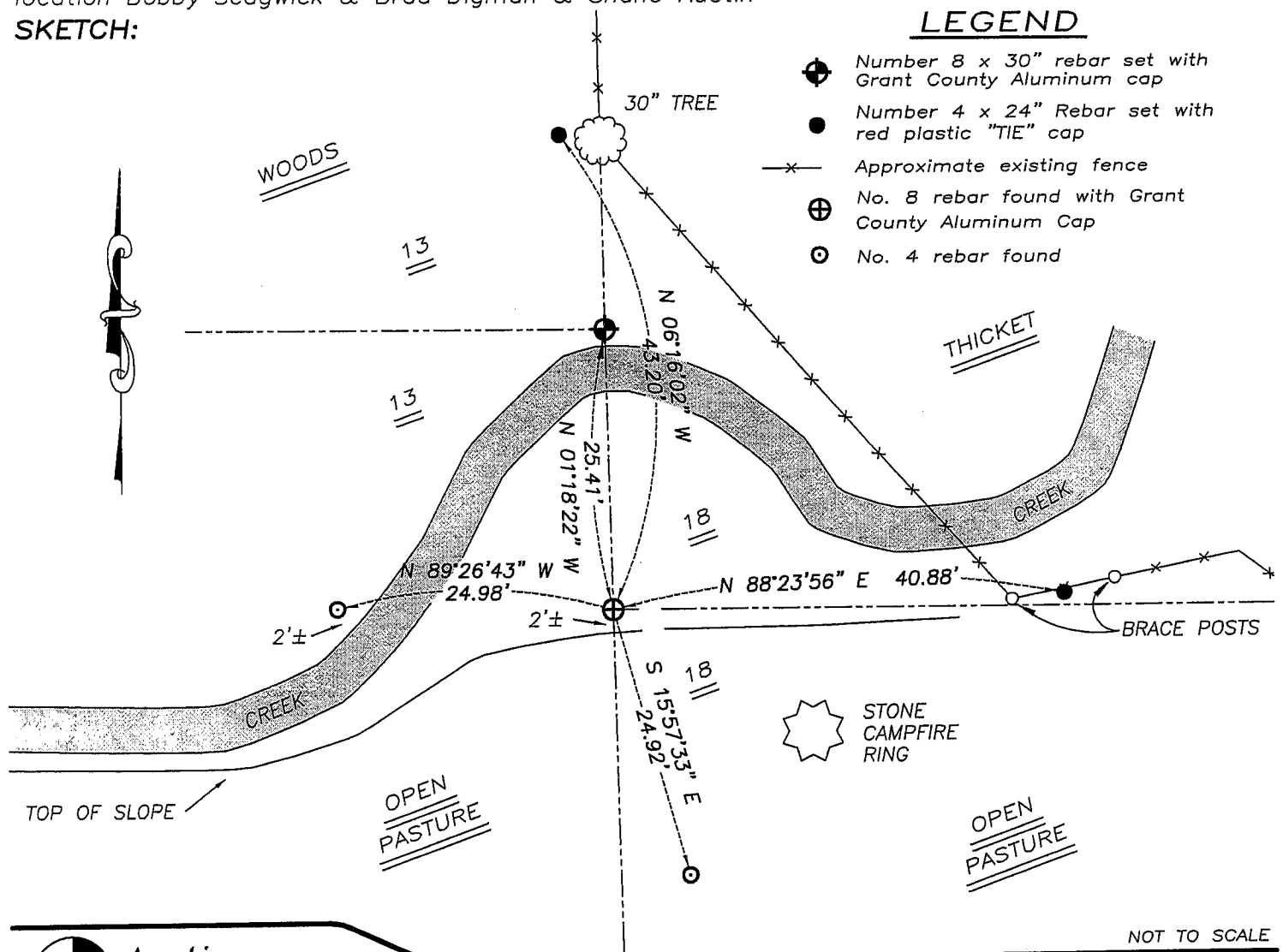
In 1998 I set a county monument at this location. No additional records of the corner were found.

## CORNER EVIDENCE FOUND

I found the existing monument and two ties. I set two new ties as shown below. Verified this location using EDM and GPS methods.

DESCRIPTION OF CORNER AND WITNESS MONUMENTS, references and accessories used to perpetuate the original or re-established location of this corner. Witnesses to monument location Bobby Sedgwick & Brad Digman & Shane Austin

## SKETCH:



## LEGEND

- ⊕ Number 8 x 30" rebar set with Grant County Aluminum cap
- Number 4 x 24" Rebar set with red plastic "TIE" cap
- x- Approximate existing fence
- ⊕ No. 8 rebar found with Grant County Aluminum Cap
- No. 4 rebar found



**Austin Engineering LLC**

4211 HWY 81 E, LANCASTER, WI 53813  
PHONE 608-723-6363 FAX 608-723-6702

JOB NUMBER 07S295  
FIELDBOOK: TDSR, 2802  
G:\T4NR2W\T4NR2W  
H:\TIE\T4NR2W\54

DRAWN BY: SW AUSTIN  
APPROVED: LL AUSTIN

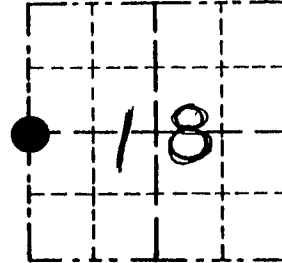
NOT TO SCALE

# Survey Monument Record

TYPE OF MONUMENT 1" X 30" IRON BAR SET  
W/ Alum. CAP.

CORNER NO. 54  
 SECTION 18  
 TOWN 4N  
 RANGE 2W

FIELD BOOK: 98-04  
 PAGE (10)



LOCATION  
 (Indicated by "X")

## BASIS FOR MONUMENT LOCATION

(Use reverse side if necessary)

Show info such as: History of corner, with reference to Vol. and pg., dates, surveyor; exact description of monument replaced; if location computed, by taped or EDM traverse; landowner, remarks, etc.

CORNER SET IN 1832 BY SIBLEY. NO RECORD OF CORNER FOUND SINCE ORIGINAL SURVEY; CORNER WAS SET AT AN OCCUPIED FENCE CORNER. THIS LOCATION FITS WELL WITH OTHER CORNERS IN AREA, VERIFIED THIS LOCATION USING EDM METHODS.

SEAL:



CERTIFIED CORRECT

*Larry L. Austin*  
 Registered Land Surveyor

DATE: 5/26/98

## TIE SKETCH

Show at least three (3) ties and monument

