

U.S. PUBLIC LAND SURVEY MONUMENT RECORD - GRANT COUNTY, WI

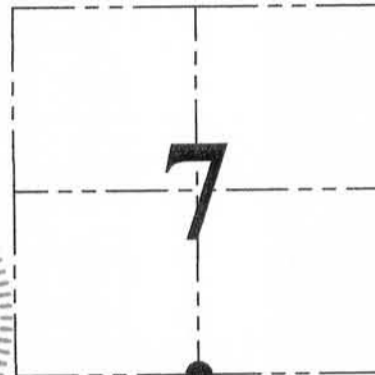
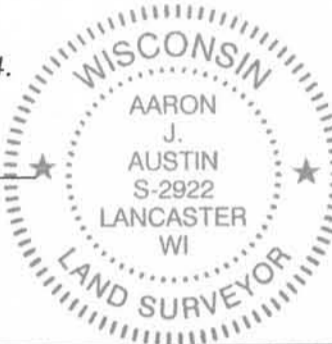
Section 7, Town 4 North Range 2 West, Town of Ellenboro

CERTIFICATE:

I, Aaron J. Austin, do hereby certify that the corner location on this record was determined by me and/or under my direct supervision and that this U.S. Public Land Survey Monument Record is correct and complete to the best of my knowledge and belief.

Dated this 31st day of March, 2014.

Aaron J. Austin
 Aaron J. Austin, S-2922



● = CORNER LOCATION

HISTORY OF CORNER ESTABLISHMENT:

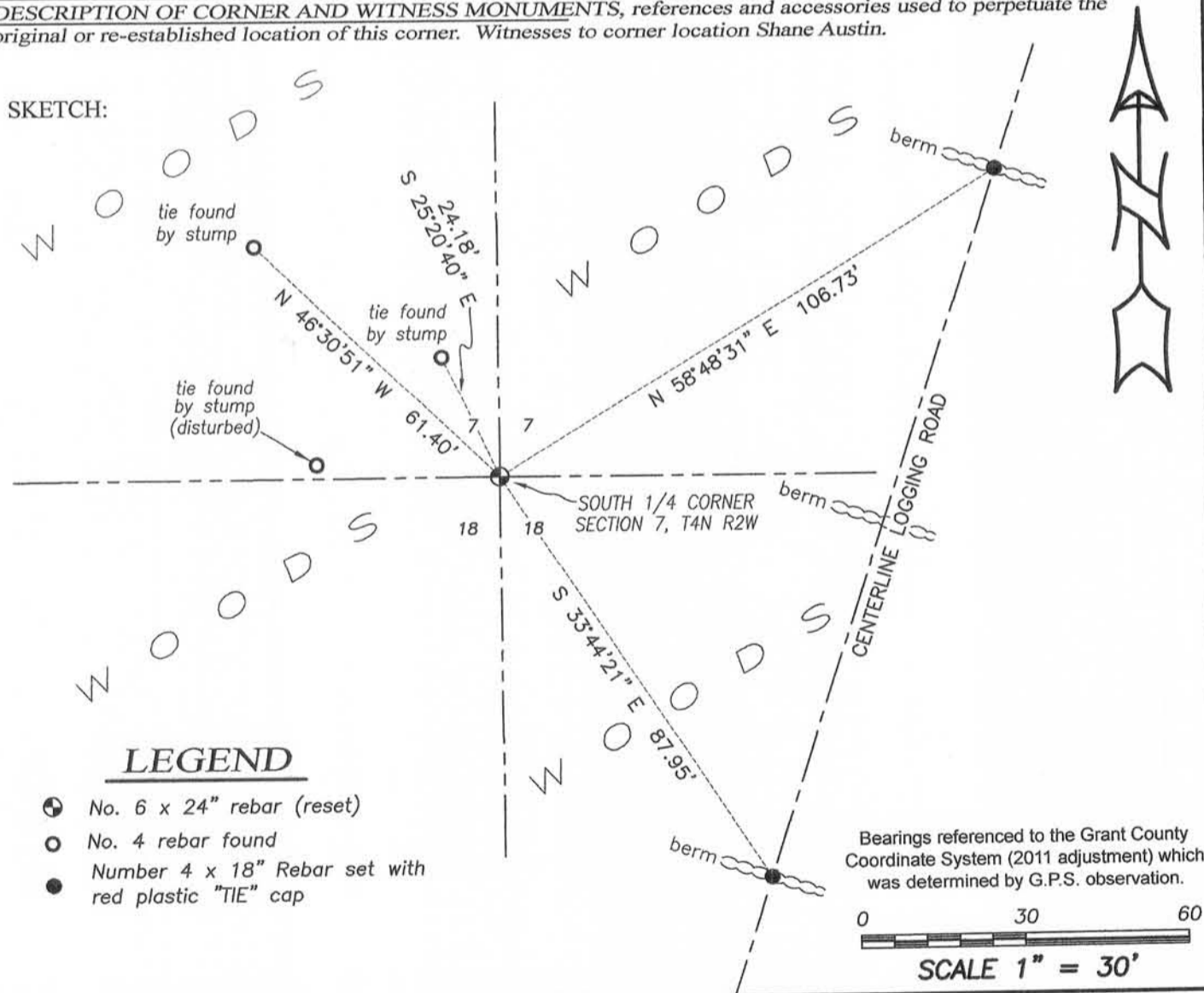
- 1833-Robert Clark originally set the corner.
- 1999-Thomas Buck reset the corner on Certified Survey Map No. 538 and prepared a Survey Monument Record for this corner.
- 2002-Larry Austin tied to this corner on Certified Survey Map No. 900.
- 2012-I tied to this corner on a Survey filed in Book 31, Page 68.

DESCRIPTION OF CORNER EVIDENCE FOUND:

It appears this corner was disturbed from recent "logging" of the woods. I found a disturbed No. 6 rebar near the corner location. I also found three ties set by Thomas Buck. One of the ties was disturbed and was not used to retrace the corner location. I set two additional ties for this corner. The corner location was verified by E.D.M. and G.P.S. methods

DESCRIPTION OF CORNER AND WITNESS MONUMENTS, references and accessories used to perpetuate the original or re-established location of this corner. Witnesses to corner location Shane Austin.

SKETCH:



LEGEND

- No. 6 x 24" rebar (reset)
- No. 4 rebar found
- Number 4 x 18" Rebar set with red plastic "TIE" cap



Austin Engineering LLC
 austinengineeringllc.com

4211 HWY 81 E, LANCASTER, WI 53813
 PHONE: 608-723-6363 FAX: 608-723-6702

JOB NO: 14s025
 G:\14s025
 H:\TIE\T4NR2W\52

FIELDBOOK: TDSR
 DRAWN BY: AJ AUSTIN
 CREW: SW AUSTIN

Survey Monument Record

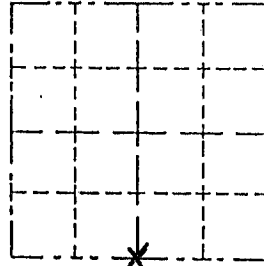
TYPE OF MONUMENT 3/4" x 24" Iron Rod
 STATE PLANE COORDINATES: N _____
 E _____
 ELEVATION — M.S.L. DATUM: _____
 THETA ANGLE: _____
 FIELD BOOK: _____
 PAGE _____

CORNER NO. _____
 SECTION 7
 TOWN 4 NORTH
 RANGE 2 WEST

BASIS FOR MONUMENT LOCATION

(Use reverse side if necessary)

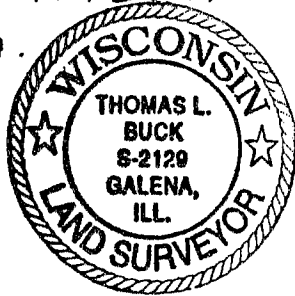
Show info such as: History of corner, with reference to Vol. and pg., dates, surveyor; exact description of monument replaced; if location computed, by taped or EDM traverse; landowner, remarks, etc.



LOCATION
 (Indicated by "X")

- FOUND PERPETUATED LOCATION
- OBLITERATED EVIDENCE LOCATION
- LOST CORNER (RESTORED BY PROPORTIONATE METHODS)

I FOUND NO HISTORY OF THIS CORNER SINCE THE ORIGINAL GOVERNMENT SURVEY. I SET THIS CORNER BY USING EXISTING PHYSICAL EVIDENCE ALONG THE SOUTH LINE OF THE SW 1/4 - SW 1/4 AND SINGLE PROPORTIONATE MEASUREMENT TO THE EAST, THEN CHECKING TO THE OCCUPIED SE CORNER OF THE SECTION WHICH WAS REASONABLE. AFTER AN E. D. M. TRAVERSE & LOCATION SURVEY OF THE AREA.



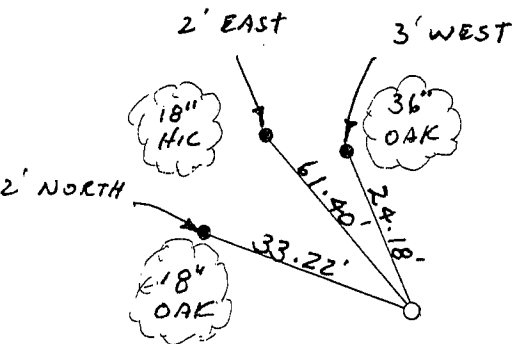
CERTIFIED CORRECT TO THE BEST OF MY KNOWLEDGE AND BELIEF

Thomas Buck
 Registered Land Surveyor

DATE: 8/13/99

TIE SKETCH

Show at least three (3) ties and monument



NO SCALE

- = 3/4" x 24" IRON ROD
- = 1/2" IRON ROD