

U.S. PUBLIC LAND SURVEY MONUMENT RECORD - GRANT COUNTY, WI

Section 9, Town 4 North Range 2 West, Town of Ellenboro (a)

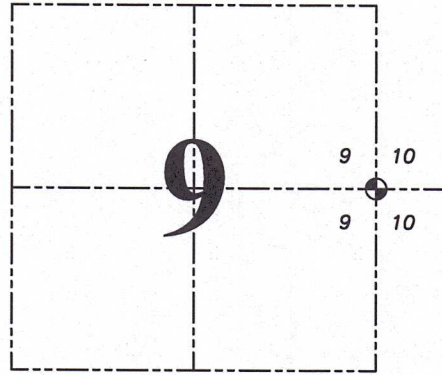
NOTE: This form is intended and designed to fulfill all requirements of the Wisconsin Administrative Code Chapter A-E 7.08, U.S. Public Land Survey Monument Record (3) (a) (b) (c) (d) (e) (f) (g) (h) (i).

CERTIFICATE: (i)

I, Aaron J. Austin, Wisconsin Professional Land Surveyor, do hereby certify that the corner location on this record was determined by me and/or under my direct supervision and that this U.S. Public Land Survey Monument Record is correct and complete to the best of my knowledge and belief.

Dated this 10th day of October, 2024.

*Aaron J. Austin*  
Aaron J. Austin, S-2922



⊕ = CORNER LOCATION

Grant County Coordinates:  
NAD 83 (2011)  
Northing: 518,930.64  
Easting: 847,151.80

HISTORY OF CORNER ESTABLISHMENT:

Original corner was set in 1833 by Robert Clark.  
Bruce Bowden set an Aluminum Monument and prepared a Survey Monument Record dated 8-15-1990.  
Larry Austin set a 1" Rebar with a Grant County Aluminum Cap and prepared a Survey Monument Record dated 11-12-1999.  
Bruce Bowden filed an information sheet dated 2-21-2001.

DESCRIPTION OF CORNER EVIDENCE FOUND: (b) (f) (g) (h)

I found the Aluminum Capped Rebar Larry set and accepted its location. I set four witness corners after I verified the Monument's location with G.P.S. and E.D.M. methods.

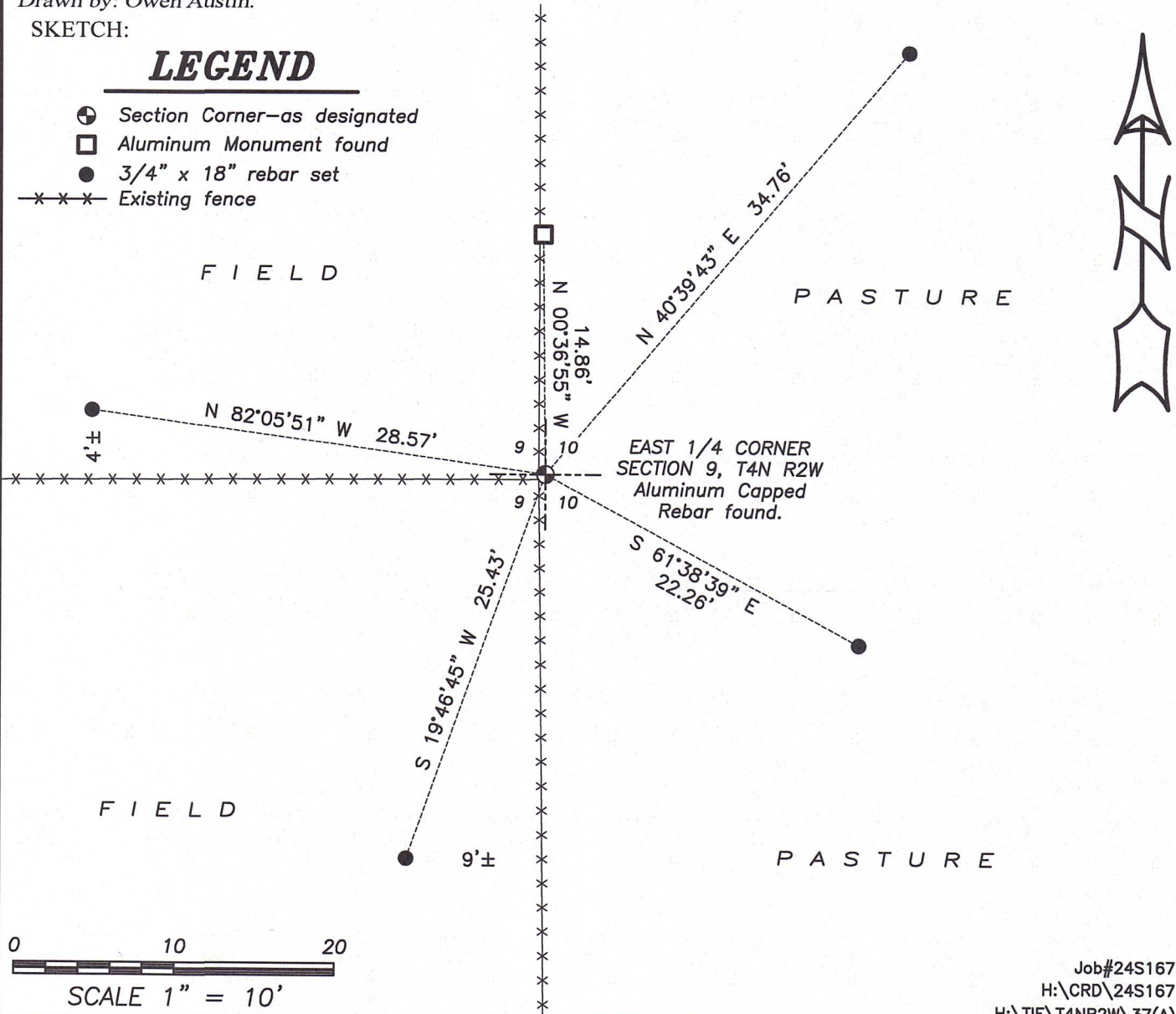
DESCRIPTION OF CORNER AND WITNESS MONUMENTS, references and accessories used to perpetuate the original or re-established location of this corner. (c) (d) (e)

Witnesses to corner location Owen Austin, Tanner Austin.  
Drawn by: Owen Austin.

SKETCH:

LEGEND

- ⊕ Section Corner—as designated
- Aluminum Monument found
- 3/4" x 18" rebar set
- x-x-x- Existing fence



**BOWDEN SURVEYING**

619 W. MERRIMAC ST.  
DODGEVILLE, WI 53533

**BRUCE D. BOWDEN**

February 21, 2001

Mr. John Anderson  
Grant County Real Property Lister  
111 South Jefferson Street  
P. O. Box 529  
Lancaster, Wi. 53813

Re: East ¼ corner of Section 9, Town 4 North, Range 2 West,  
Ellenboro Township, Grant County, Wisconsin

Dear Mr. Anderson;

This is an informational sheet. Please file it with the section corner ties if you feel that is appropriate.

There are two tie sheets available for this corner. One I prepared in 1990 and the other was provided by Larry Austin in 1999. Mr. Austin feels the fences across Section 9 are more in accordance with Charles Sampson's survey from 1892 and has established the corner at the intersection of the fences that go West from this corner.

I established the corner in 1990 at a location 15' North of this fence from the evidence of the fences to the East of this corner. Mr. Sampson also surveyed across Section 10 at the same time he worked in Section 9. I could not find the stones he set at the N 1/8 corner of the SW ¼ and the center of Section 10 in his 1892 survey.

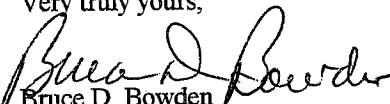
My location of the corner more closely matches the fence at the forty corner that is ¼ mile to the North but Mr. Austin's location matches very closely with the fence at the forty corner to the South. The dimension shown by Mr. Sampson going to the Northeast and Southeast corners of Section 9 is 40.50 chains(2673'). Using Mr. Austin's corner, I measure 2668.16' to the corner to the North and 2640.93' to the South (going over a river).

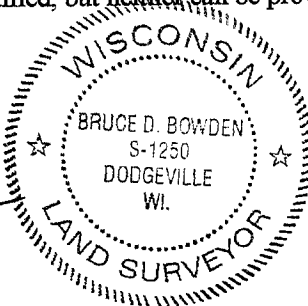
The distance North from the East ¼ corner of Section 16 to the Northeast corner of Section 4 is 13,350.54' (originally recorded as 201.02 chains). This computes to an average of 2656.56' per half mile of government measure, which matches my distance within a foot for the East line of the Southeast ¼ of Section 9(2655.79').

I was unable to find the original "stake set in mound of stones" and Sampson's "put in stone" or to prove any of the trees in the area to be Sampson's bearing trees.

I have decided to acquiesce to Mr. Austin's location, since there is no definitive physical answer at this time and his location more closely matches the fences to the West, thus keeping peace in the neighborhood. Logically both locations can be rationalized and justified, but neither can be proven beyond a reasonable doubt, which pretty much sums up our day-to-day business.

Very truly yours,

  
Bruce D. Bowden  
R.L.S. - 1250



cc: Mr. Larry Austin

# GRANT COUNTY CERTIFIED LAND CORNER

CORNER NUMBER 37

**CERTIFICATE:**

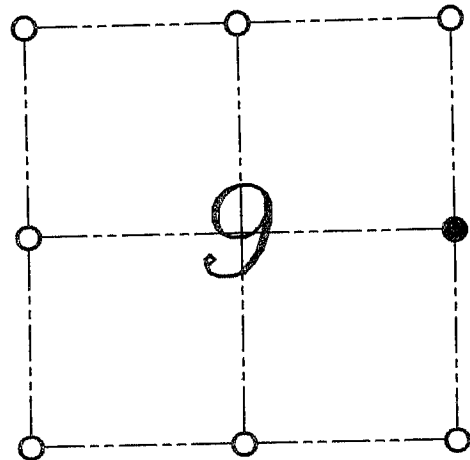
I, LARRY L. AUSTIN, DO HEREBY CERTIFY THAT ON 10th DAY OF NOVEMBER, 1999, I FOUND EVIDENCE OF THE EAST 1/4 CORNER OF SECTION 9, TOWN 4 NORTH, RANGE 2 WEST, OF THE FOURTH PRINCIPAL MERIDIAN, AND I RE-ESTABLISHED SAID CORNER ACCORDING TO THE WISCONSIN STATUTES AS SHOWN AND DESCRIBED HEREON.

DATED THIS 12th DAY OF NOVEMBER, 1999

*Larry L. Austin*  
LARRY L. AUSTIN S-1903



SEAL



● = CORNER LOCATION  
EAST 1/4 CORNER OF  
SECTION 9, T 4 N R 2 W  
TOWN OF ELLENBORO

**HISTORY OF ORIGINAL CORNER ESTABLISHMENT:**

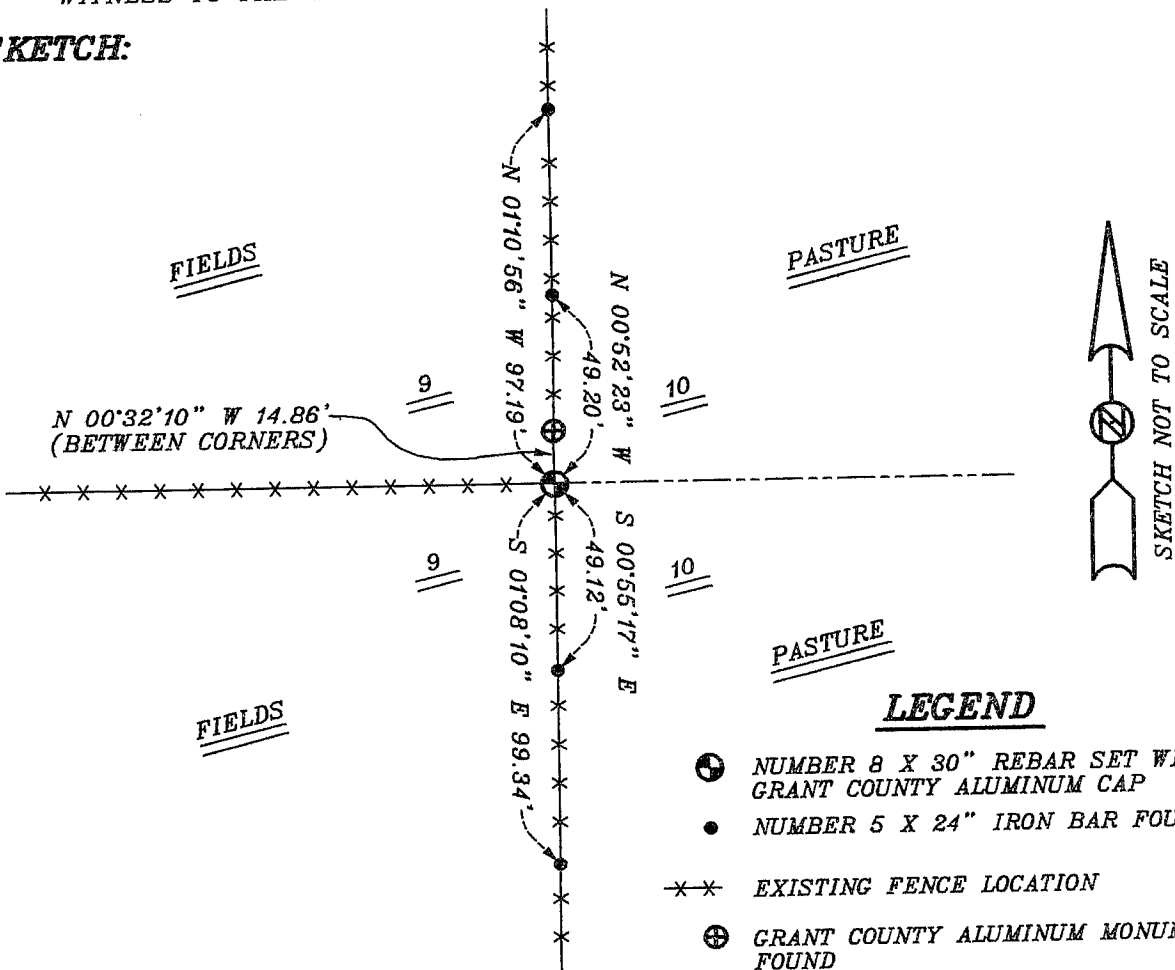
CORNER WAS SET IN 1833 BY ROBERT CLARK. IN 1892 CHARLES SAMPSON ESTABLISHED THE CORNER BASED ON ALL MEASUREMENTS OF THE SECTION. IN 1990 BRUCE BOWDEN ESTABLISHED THE CORNER.

**DESCRIPTION OF CORNER EVIDENCE FOUND:**

I FOUND AND DID NOT ACCEPT BOWDEN'S CORNER LOCATION. I ACCEPTED THE EXISTING FENCE CORNER AS THE BEST AVAILABLE EVIDENCE OF SAMPSON'S LOCATION. VERIFIED THIS LOCATION BY TWO GENERATIONS OF ORAL TESTIMONY.

**DESCRIPTION OF CORNER AND WITNESS MONUMENTS, REFERENCES AND ACCESSORIES USED TO PERPETUATE THE ORIGINAL OR RE-ESTABLISHED LOCATION OF THIS CORNER:**  
WITNESS TO THE CORNER LOCATION: BOBBY SEDGWICK ; SHELBY BLINDERT

**SKETCH:**



**LEGEND**

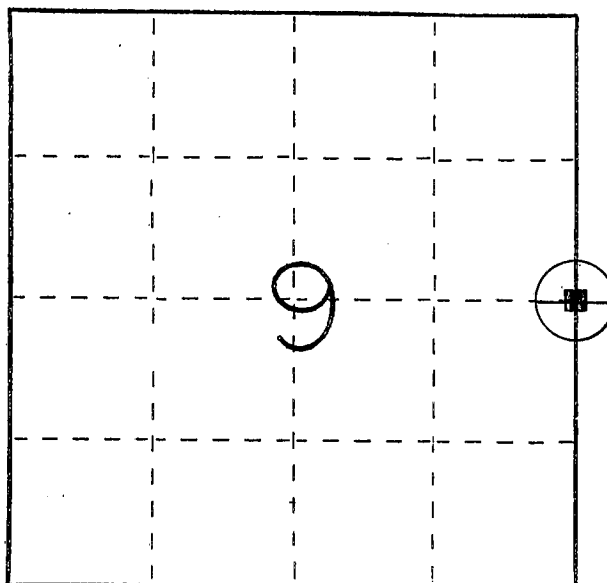
- ⊕ NUMBER 8 X 30" REBAR SET WITH GRANT COUNTY ALUMINUM CAP
- NUMBER 5 X 24" IRON BAR FOUND
- ×× EXISTING FENCE LOCATION
- ⊕ GRANT COUNTY ALUMINUM MONUMENT FOUND

# U. S. PUBLIC LAND SURVEY MONUMENT RECORD

INSTRUCTIONS : This record shall show the location of the corner and shall include all of the following nine elements (a through i).

- (a) Identify the corner by reference to the U.S. public land survey system.  
 ○ = Corner monument restored.

EAST 1/4 CORNER  
 SECTION 9  
 TOWN 4 NORTH  
 RANGE 2 WEST  
 ELLENBORO TOWNSHIP  
 GRANT COUNTY, WISCONSIN



- (b) Describe any record evidence, monument evidence, occupational evidence, testimonial evidence or any other material evidence you considered, and whether the monument was found or placed.

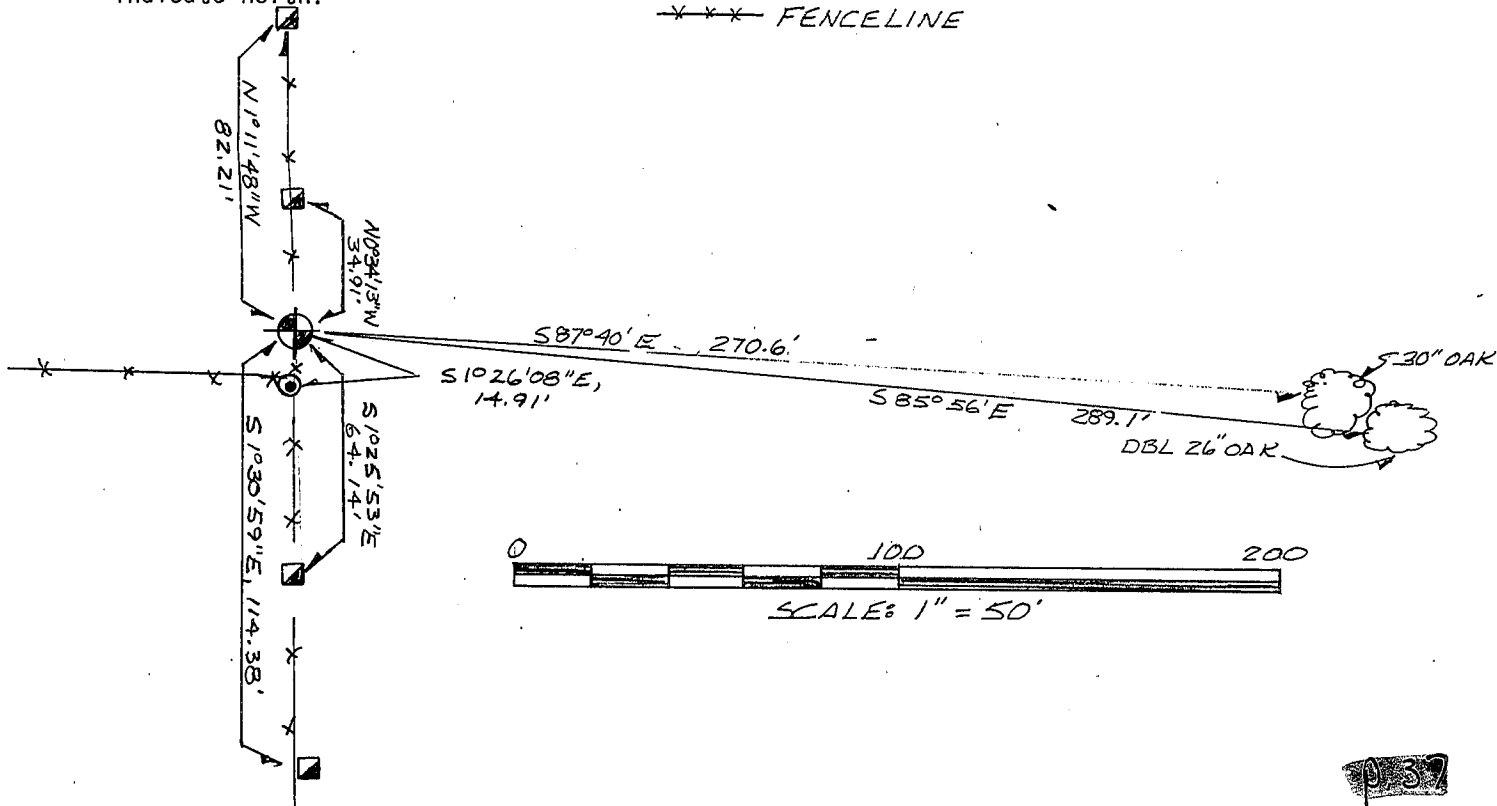
Monument set from existing physical evidence of fences after verification by proportionate measurements from an EDM traverse of the area.

- (c) In the plan view drawing below, provide reference ties to at least 4 witness monuments, or, if the location is within a municipality, to at least 2 witness monuments. (Witness monuments shall be made of concrete, natural stone, iron or other equally durable material, ~~except~~ wood.) Describe witness monuments.

- (d) Show a plan view drawing depicting the relevant ties which is sufficient in detail to enable accurate relocation of the corner monument if the corner monument is disturbed. Indicate north.

## LEGEND

- DRIVEABLE CAST ALUMINUM MONUMENT SET
- NO. 5 x 24" REBAR SET
- POLE BARN SPIKE SET
- FENCELINE



- (e) Describe any material discrepancy between the location of the corner as restored or reestablished and the location of that corner as previously restored or reestablished by distance and direction. Show the discrepancy on the plan view drawing under (d), above. Show the distances between the corner as previously restored or reestablished and (1) the corner as restored or reestablished, and (2) to at least 2 of the witness monuments shown on the drawing in (d), above.

None.

- (f) Was the corner restored through acceptance of (1) an obliterated evidence location, or, (2) a found perpetuated location?

(1) An obliterated evidence location

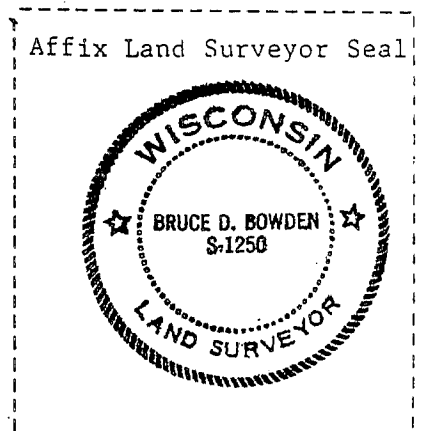
- (g&h) Was the corner reestablished through lost corner proportionate methods? If so, show the method, including the directions and distances to other public land survey corners used as evidence or used for proportioning in determining the corner location?

No.

- (i) I, Bruce D. Bowden, R.L.S. - 1250  
(type or print name) certify that the corner location shown on this record was determined by me or under my direction and control and that this U.S. Public Land Survey Monument Record is correct and complete to the best of my knowledge and belief.

Signature

Date



Bruce D. Bowden August 15, 1990