

Remonumentation

- (E) DESCRIBE ANY MATERIAL DISCREPANCY BETWEEN THE LOCATION OF THE CORNER AS RESTORED OR REESTABLISHED AND THE LOCATION OF THAT CORNER AS PREVIOUSLY RESTORED OR REESTABLISHED BY DISTANCE AND DIRECTION. SHOW THE DISCREPANCY ON THE PLAN VIEW DRAWING UNDER (D), ABOVE. SHOW THE DISTANCES BETWEEN THE CORNER AS PREVIOUSLY RESTORED OR REESTABLISHED AND (1) THE CORNER AS RESTORED OR REESTABLISHED, AND (2) TO AT LEAST 2 OF THE WITNESS MONUMENTS SHOWN ON THE DRAWING IN (D) ABOVE.

N/A

- (F) WAS THE CORNER RESTORED THROUGH ACCEPTANCE OF (1) AN OBLITERATED EVIDENCE LOCATION, OR (2) A FOUND PERPETUATED LOCATION?

(2) A FOUND PERPETUATED LOCATION.

- (G&H) WAS THE CORNER REESTABLISHED THROUGH LOST CORNER PROPORTIONATE METHODS? IF SO, SHOW THE METHOD, INCLUDING THE DIRECTIONS AND DISTANCES TO OTHER PUBLIC LAND SURVEY CORNERS USED AS EVIDENCE OR USED FOR PROPORTIONING IN DETERMINING THE CORNER LOCATION.

N/A

CORNER HISTORY

THE ORIGINAL GOVERNMENT CORNER WAS ESTABLISHED BY ROBERT CLARK JR. IN THE FIRST QUARTER OF 1833.

IN A SURVEY DATED 18 DECEMBER 1850, GEO STUNTZ WAS AT THE CORNER.

IN A TIE SHEET DATED 13 AUGUST 1999, THOMAS BUCK SET A 3/4" x 24" REBAR AT THE RECORDED OFFSET FROM THE SOUTHEAST CORNER OF SECTION 1, T4N, R3W.

IN A TIE SHEET DATED 25 JUNE 2008, AND A PLAT OF SURVEY LAST REVISED ON 9 APRIL 2008, LARRY AUSTIN REPORTED FINDING THE #6 REBAR.

IN PLATS OF SURVEY DATED 31 MARCH AND 29 JULY 2014, AARON AUSTIN FOUND THE #6 REBAR.

- (I) I, JAY P. ADAMS, P.L.S. - 2879, CERTIFY THAT THE CORNER LOCATION SHOWN ON THIS RECORD WAS DETERMINED BY ME OR UNDER MY DIRECTION AND CONTROL AND THAT THIS U.S. PUBLIC LAND SURVEY MONUMENT RECORD IS CORRECT AND COMPLETE TO THE BEST OF MY KNOWLEDGE AND BELIEF.

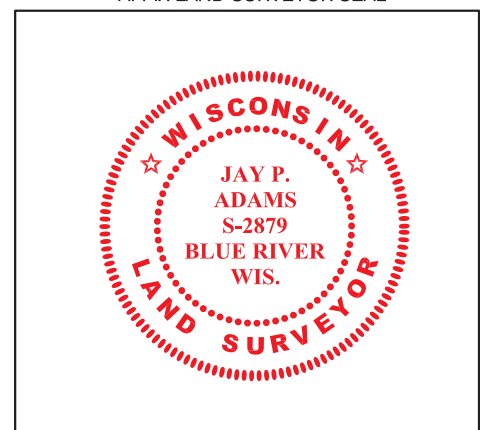


SIGNATURE

7 JANUARY 2019

DATE

AFFIX LAND SURVEYOR SEAL



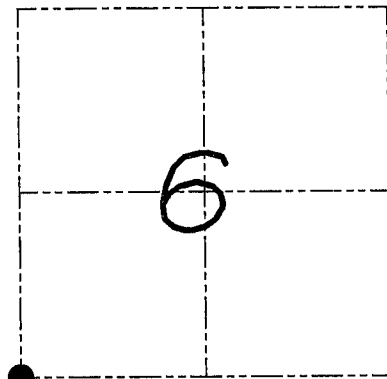
U.S. PUBLIC LAND SURVEY MONUMENT RECORD

Section 6, Town 4 North Range 2 West, Town of Ellenboro, Grant County, Wisconsin

CERTIFICATE

I, Larry L. Austin, do hereby certify that the corner location on this record was determined by me and/or under my direct supervision and that this U.S. public land survey monument record is correct and complete to the best of my knowledge and belief.

Larry L. Austin
 Larry L. Austin, Surveyor
 Wisconsin
 1903
 Lancaster WI
 025.08
 date



● = CORNER LOCATION

HISTORY OF CORNER

Corner was originally set in the third quarter of 1832 by Clark. In 1859 Stuntz tied to the corner. In 1999 Buck set a No. 6 rebar. No other record of the corner was found.

CORNER EVIDENCE FOUND

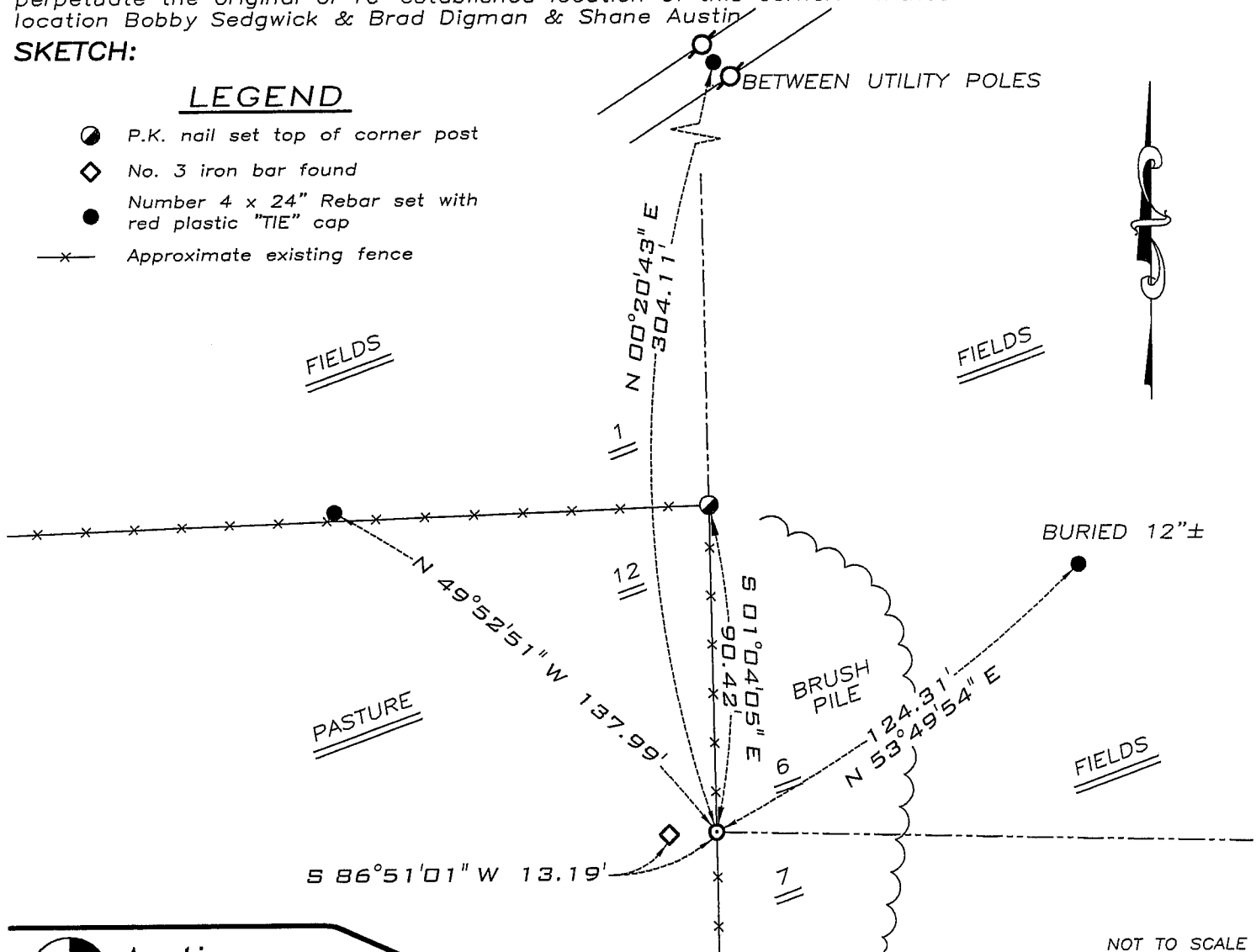
I found the existing No. 6 rebar and accepted its location. The ties were lost due to recent bulldozing. I retied the corner as shown below. Verified this location using EDM & GPS methods.

DESCRIPTION OF CORNER AND WITNESS MONUMENTS, references and accessories used to perpetuate the original or re-established location of this corner. Witnesses to monument location Bobby Sedgwick & Brad Digman & Shane Austin

SKETCH:

LEGEND

- P.K. nail set top of corner post
- ◆ No. 3 iron bar found
- Number 4 x 24" Rebar set with red plastic "TIE" cap
- x- Approximate existing fence



NOT TO SCALE



Austin Engineering LLC

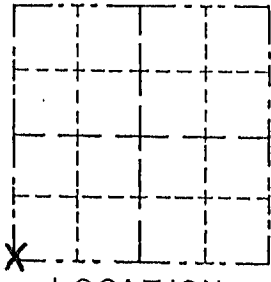
4211 HWY 81 E, LANCASTER, WI 53813
 PHONE 608-723-6363 FAX 608-723-6702

JOB NUMBER 08S029-LENZ ESTATE
 FIELDBOOK: TDSR, 2802 DRAWN BY: SW AUSTIN
 G:\T5NR2W\32 APPROVED: LL AUSTIN
 H:\TIE\T4NR2W\33

Survey Monument Record

CORNER NO. _____
 SECTION 6
 TOWN 4 NORTH
 RANGE 2 WEST

TYPE OF MONUMENT 3/4" X 24" IRON ROD
 STATE PLANE COORDINATES: N _____
 E _____
 ELEVATION — M.S.L. DATUM: _____
 THETA ANGLE: _____
 FIELD BOOK: _____
 PAGE _____

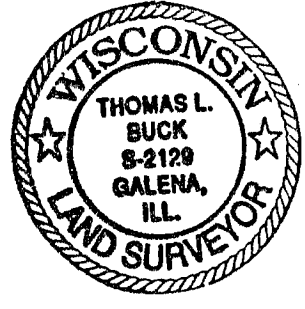


BASIS FOR MONUMENT LOCATION

(Use reverse side if necessary)
 Show info such as: History of corner, with reference to Vol. and pg., dates, surveyor; exact description of monument replaced; if location computed, by taped or EDM traverse; landowner, remarks, etc.

LOCATION
 (Indicated by "X")
 FOUND PERPETUATED LOCATION
 OBLITERATED EVIDENCE LOCATION
 LOST CORNER (RESTORED BY PROPORTIONATE METHODS)

I FOUND NO HISTORY OF THIS CORNER SINCE THE ORIGINAL GOVERNMENT SURVEY. I SET THIS CORNER IN THE N-S FENCE LINE AT THE CLOSING CORNER DISTANCE. AFTER AN E. D. M. TRAVERSE AND LOCATION SURVEY OF THE AREA.



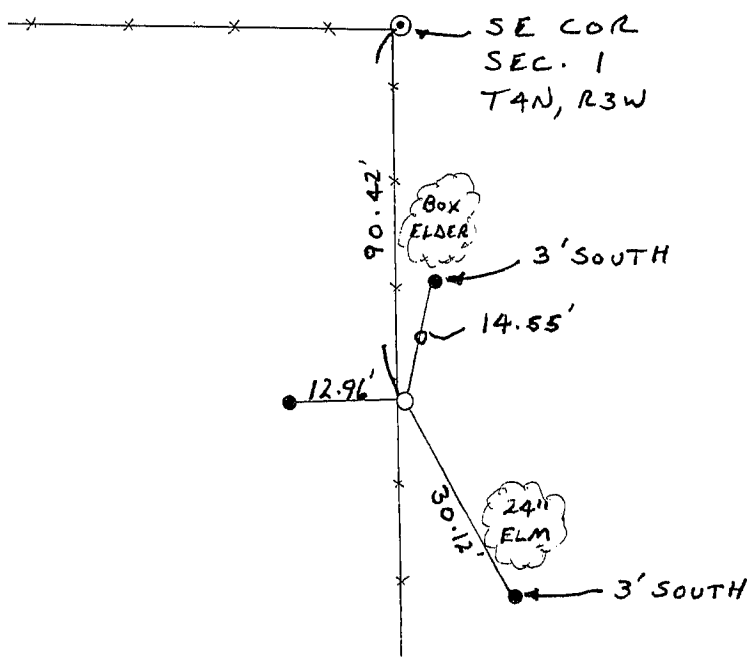
CERTIFIED CORRECT TO THE BEST OF MY KNOWLEDGE AND BELIEF

Thomas Buck
 Registered Land Surveyor

DATE: 8/13/89

TIE SKETCH

Show at least three (3) ties and monument



NO SCALE

- ⊙ = P.K. NAIL IN CONC.
- = 3/4" X 24" IRON ROD
- = 1/2" IRON ROD
- * — * = EXISTING FENCE