

REMON

42032

# GRANT COUNTY U.S. PUBLIC LAND SURVEY MONUMENT RECORD

INSTRUCTIONS: THIS RECORD SHALL SHOW THE LOCATION OF THE CORNER AND SHALL INCLUDE ALL OF THE FOLLOWING ELEMENTS (A THROUGH I).

(A) IDENTIFY THE CORNER AS REFERENCED TO THE U.S. PUBLIC LAND SURVEY SYSTEM

■ = CORNER MONUMENT RESTORED

WITNESSES TO CORNER LOCATION:

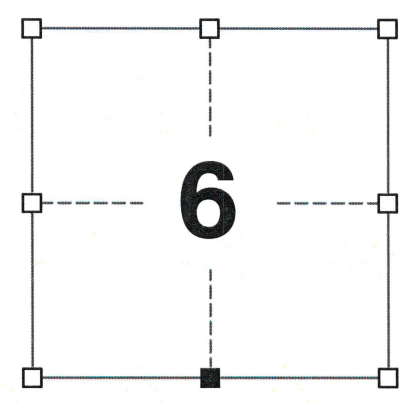
JAMIE L. BRANDT  
TYLER D. ATKINSON

GEOGRAPHIC COORDINATES,  
NAD 83 (2011) ADJUSTMENT:

LATITUDE: 42° 50' 32.51522"  
LONGITUDE: 90° 39' 18.47753"

WISCONSIN COORDINATE REFERENCE SYSTEM (WISCRS),  
GRANT COUNTY, NAD 83 (2011) ADJUSTMENT:

NORTHING: 521,630.798  
EASTING: 833,855.535



SECTION 6  
TOWNSHIP 4 NORTH, RANGE 2 WEST  
TOWN OF ELLENBORO

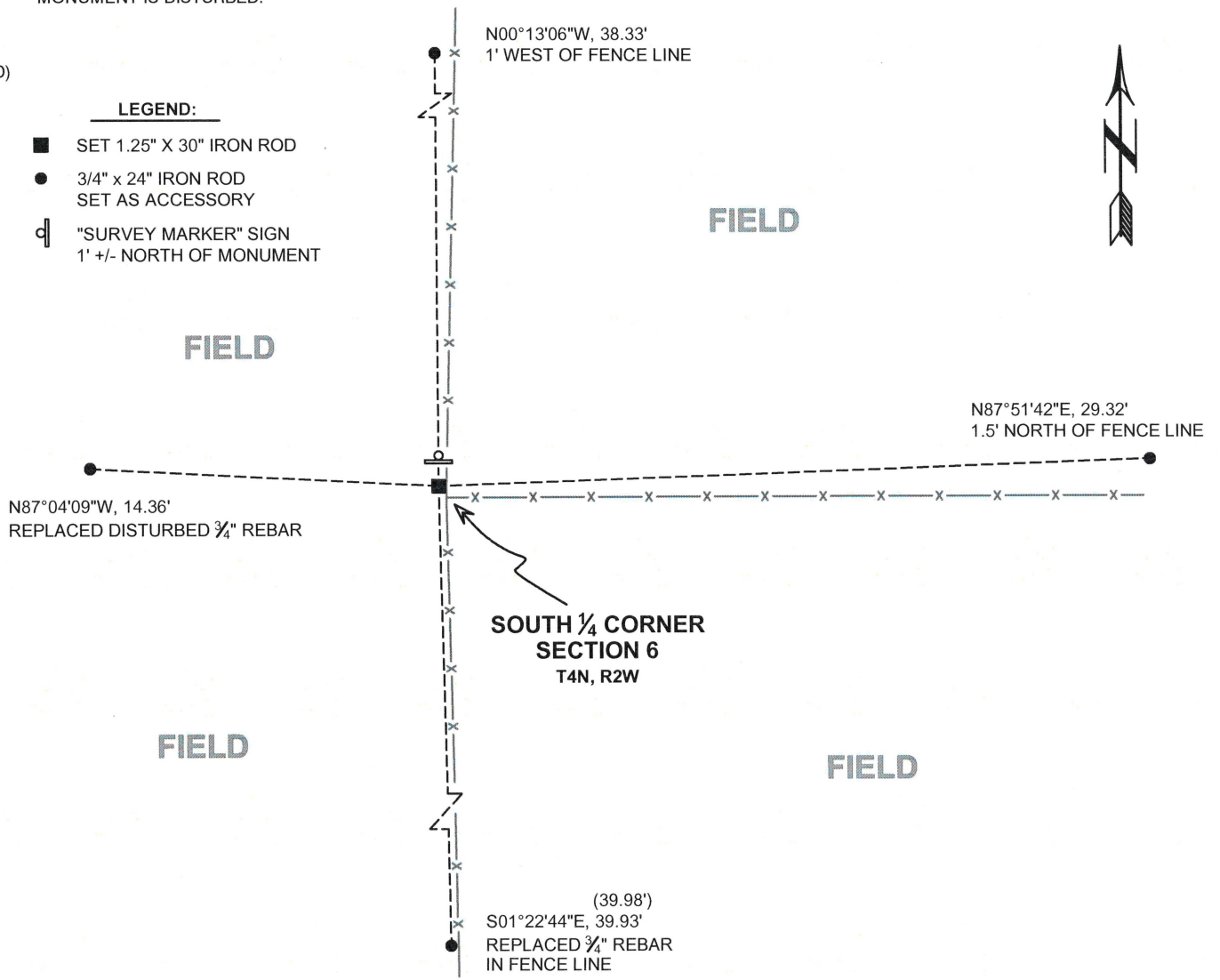
(B) DESCRIBE ANY RECORD EVIDENCE, MONUMENT EVIDENCE, OCCUPATIONAL EVIDENCE, TESTIMONIAL EVIDENCE OR ANY OTHER MATERIAL EVIDENCE YOU CONSIDERED, AND WHETHER THE MONUMENT WAS FOUND OR PLACED.

I COULD FIND NO MONUMENTS OR BEARING TREES FROM THE ORIGINAL GOVERNMENT SURVEY OR THE HISTORIC COUNTY SURVEYOR'S SUBSEQUENT RESURVEY. I DID NOT RECOVER THE MONUMENT REPORTED BY SCHMIT. I RECOVERED THE 3/4" REBAR SET BY THOMAS BUCK. I ACCEPTED THIS LOCATION AS THE BEST AVAILABLE EVIDENCE OF THE ORIGINAL GOVERNMENT CORNER AND REMONUMENTED IT WITH A 1.25" X 30" IRON ROD.

(C) IN THE PLAN VIEW DRAWING BELOW, PROVIDE REFERENCE TIES TO AT LEAST 4 WITNESS MONUMENTS. WITNESS MONUMENTS SHALL BE MADE OF CONCRETE, NATURAL STONE, IRON, BEARING TREES OR ANY OTHER EQUALLY DURABLE MATERIAL. DEPICT THE RELEVANT MONUMENTS AND REFERENCE TIES WITH SUFFICIENT DETAIL TO ENABLE ACCURATE RELOCATION OF THE CORNER IF THE CORNER MONUMENT IS DISTURBED.

(D)

- LEGEND:**
- SET 1.25" X 30" IRON ROD
  - 3/4" x 24" IRON ROD SET AS ACCESSORY
  - ⊕ "SURVEY MARKER" SIGN 1' +/- NORTH OF MONUMENT



42032

(E) DESCRIBE ANY MATERIAL DISCREPANCY BETWEEN THE LOCATION OF THE CORNER AS RESTORED OR REESTABLISHED AND THE LOCATION OF THAT CORNER AS PREVIOUSLY RESTORED OR REESTABLISHED BY DISTANCE AND DIRECTION. SHOW THE DISCREPANCY ON THE PLAN VIEW DRAWING UNDER (D), ABOVE. SHOW THE DISTANCES BETWEEN THE CORNER AS PREVIOUSLY RESTORED OR REESTABLISHED AND (1) THE CORNER AS RESTORED OR REESTABLISHED, AND (2) TO AT LEAST 2 OF THE WITNESS MONUMENTS SHOWN ON THE DRAWING IN (D) ABOVE.

N/A

(F) WAS THE CORNER RESTORED THROUGH ACCEPTANCE OF (1) AN OBLITERATED EVIDENCE LOCATION, OR (2) A FOUND PERPETUATED LOCATION?

(2) A FOUND PERPETUATED LOCATION.

(G&H) WAS THE CORNER REESTABLISHED THROUGH LOST CORNER PROPORTIONATE METHODS? IF SO, SHOW THE METHOD, INCLUDING THE DIRECTIONS AND DISTANCES TO OTHER PUBLIC LAND SURVEY CORNERS USED AS EVIDENCE OR USED FOR PROPORTIONING IN DETERMINING THE CORNER LOCATION.

N/A

CORNER HISTORY

THE ORIGINAL GOVERNMENT CORNER WAS ESTABLISHED BY ROBERT CLARK JR. IN THE FIRST QUARTER OF 1833.

IN A SURVEY DATED 18 DECEMBER 1850, GEORGE STUNTZ WAS AT THE CORNER.

IN A PLAT OF SURVEY DATED 6 DECEMBER 1978, LAURENCE SCHMIT SET A 1" X 12" IRON PIPE AT THE CORNER.

IN A PLAT OF SURVEY DATED 10 JANUARY 1991, MATTHEW JANIAC FOUND A NO. 6 REBAR AT THE CORNER.

IN A TIE SHEET DATED 18 FEBRUARY 1991, MATTHEW JANIAC FOUND A NO. 6 REBAR AT THE CORNER.

IN A PLAT OF SURVEY DATED 29 OCTOBER 1993, LAURENCE SCHMIT FOUND A NO. 6 REBAR AT THE CORNER.

IN A PLAT OF SURVEY DATED 12 JUNE 1996, LARRY AUSTIN FOUND A NO. 6 REBAR AT THE CORNER.

IN A CERTIFIED SURVEY MAP DATED 5 MARCH 1999, THOMAS BUCK SET A 3/4" X 24" REBAR AT THE CORNER.

IN A CERTIFIED SURVEY MAP DATED 17 OCTOBER 2000, LARRY AUSTIN FOUND A NO. 6 REBAR AT THE CORNER.

IN A PLAT OF SURVEY DATED 3 JUNE 2006, LARRY AUSTIN FOUND A NO. 6 REBAR AT THE CORNER.

IN A PLAT OF SURVEY DATED 2 APRIL 2008, LARRY AUSTIN FOUND A NO. 6 REBAR AT THE CORNER.

IN A PLAT OF SURVEY DATED 28 MAY 2008, LARRY AUSTIN FOUND A NO. 6 REBAR AT THE CORNER.

IN A PLAT OF SURVEY DATED 29 JULY 2014, AARON AUSTIN FOUND A NO. 6 REBAR AT THE CORNER.

IN A PLAT OF SURVEY DATED 31 MARCH 2017, AARON AUSTIN FOUND A NO. 6 REBAR AT THE CORNER.

IN A PLAT OF SURVEY DATED 27 APRIL 2017, AARON AUSTIN FOUND A NO. 6 REBAR AT THE CORNER.

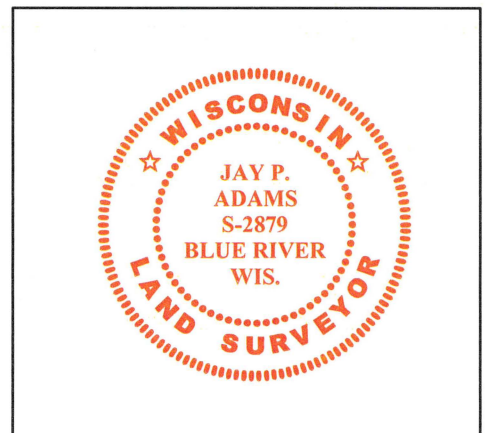
AFFIX LAND SURVEYOR SEAL

(I) I, JAY P. ADAMS, P.L.S. - 2879, CERTIFY THAT THE CORNER LOCATION SHOWN ON THIS RECORD WAS DETERMINED BY ME OR UNDER MY DIRECTION AND CONTROL AND THAT THIS U.S. PUBLIC LAND SURVEY MONUMENT RECORD IS CORRECT AND COMPLETE TO THE BEST OF MY KNOWLEDGE AND BELIEF.

SIGNATURE

10 FEBRUARY 2020

DATE



MAR 29 1991

# GOVERNMENT CORNER RECORD

S 1/4 CORNER, SECTION 6, TOWNSHIP 4 NORTH, RANGE 2 WEST,

TOWN, CITY OR VILLAGE OF ELLENBORO

TYPE OF MONUMENT: 3/4" X 48" IRON ROD SET ELEVATION - M.S.L. DATUM

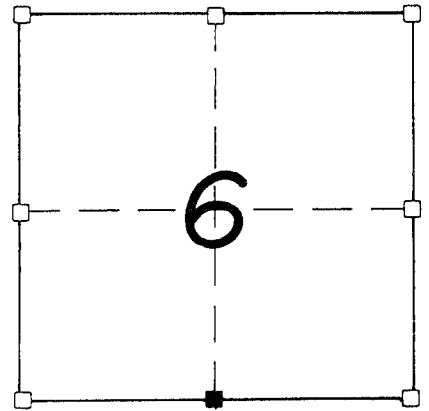
WITNESSES TO CORNER LOCATION

SECTION 6, T 4 N, R 2 W

SEAN M. WALSH

PATRICK J. DEDERICH

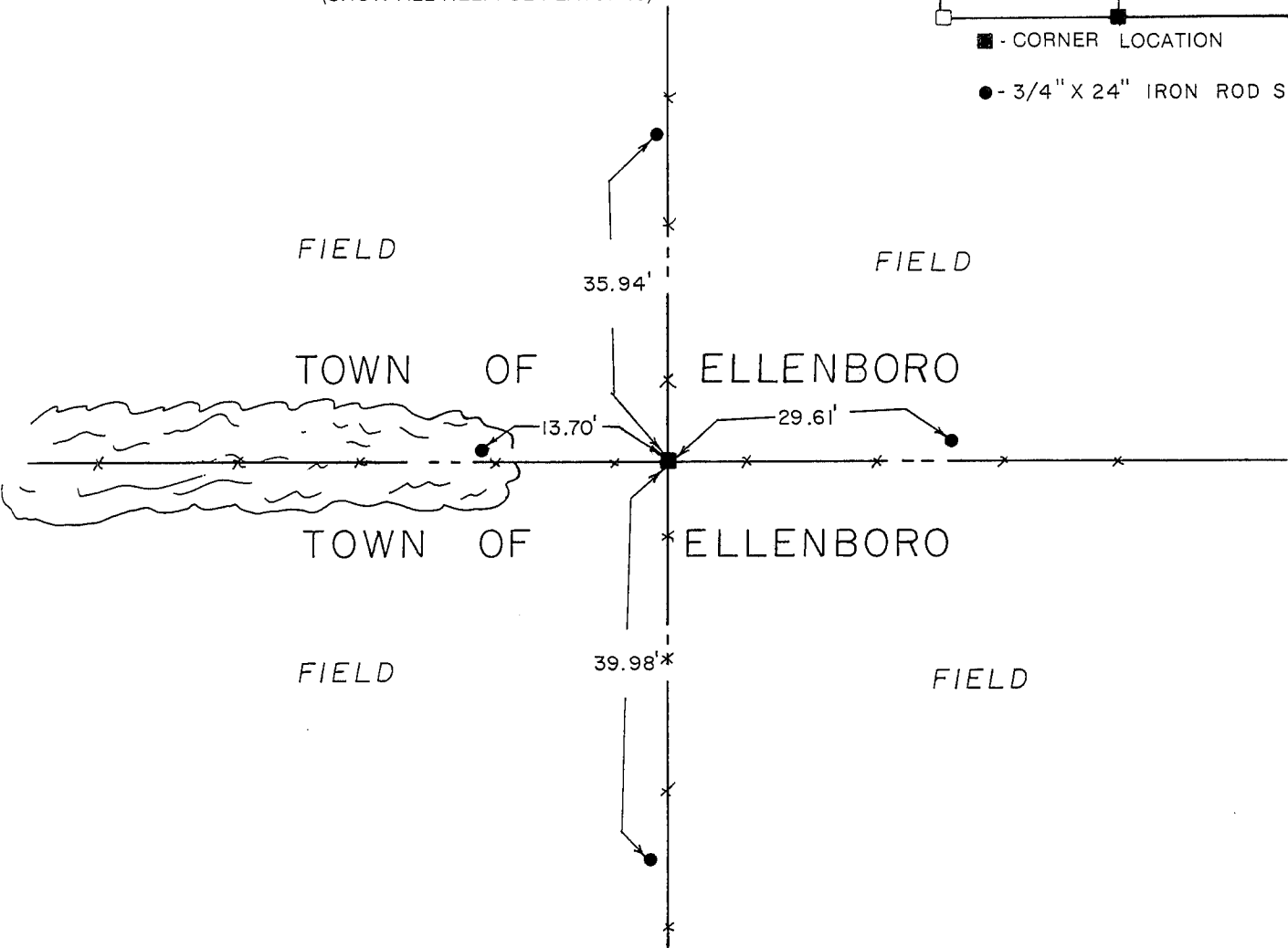
TOWN OF ELLENBORO



■ - CORNER LOCATION

● - 3/4" X 24" IRON ROD SET

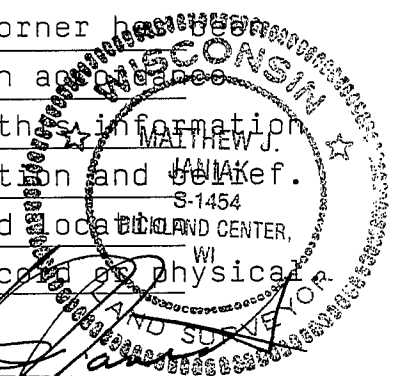
TIE SKETCH (SHOW ALL HELPFUL FEATURES)



SURVEYOR'S CERTIFICATE

SEAL S- 1454

I, Matthew J. Janiak, DO HEREBY CERTIFY THAT the above corner has been  
monumented under my direction and supervision in accordance  
with the information contained hereon and that the information  
is correct to the best of my knowledge, information and belief.  
This corner has been established at the occupied location of the  
as no other evidence could be located either recorded or physical



DATED THIS 18th DAY OF FEBRUARY, 19 91

REGISTERED LAND SURVEYOR

P. 32