

REMON  
42031

# GRANT COUNTY U.S. PUBLIC LAND SURVEY MONUMENT RECORD

INSTRUCTIONS: THIS RECORD SHALL SHOW THE LOCATION OF THE CORNER AND SHALL INCLUDE ALL OF THE FOLLOWING ELEMENTS (A THROUGH I).

(A) IDENTIFY THE CORNER AS REFERENCED TO THE U.S. PUBLIC LAND SURVEY SYSTEM

■ = CORNER MONUMENT RESTORED

WITNESSES TO CORNER LOCATION:

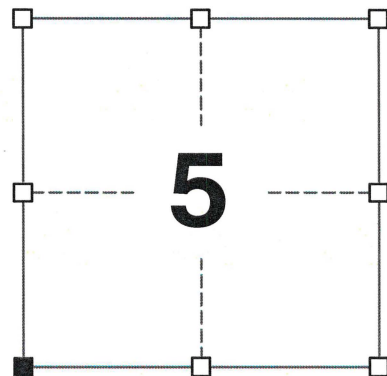
JAMIE L. BRANDT  
JAY P. ADAMS

GEOGRAPHIC COORDINATES,  
NAD 83 (2011) ADJUSTMENT:

LATITUDE: 42° 50' 32.10726"  
LONGITUDE: 90° 38' 42.73479"

WISCONSIN COORDINATE REFERENCE SYSTEM (WISCRS),  
GRANT COUNTY, NAD 83 (2011) ADJUSTMENT:

NORTHING: 521,594.230  
EASTING: 836,518.590



SECTION 5  
TOWNSHIP 4 NORTH, RANGE 2 WEST  
TOWN OF ELLENBORO

(B) DESCRIBE ANY RECORD EVIDENCE, MONUMENT EVIDENCE, OCCUPATIONAL EVIDENCE, TESTIMONIAL EVIDENCE OR ANY OTHER MATERIAL EVIDENCE YOU CONSIDERED, AND WHETHER THE MONUMENT WAS FOUND OR PLACED.

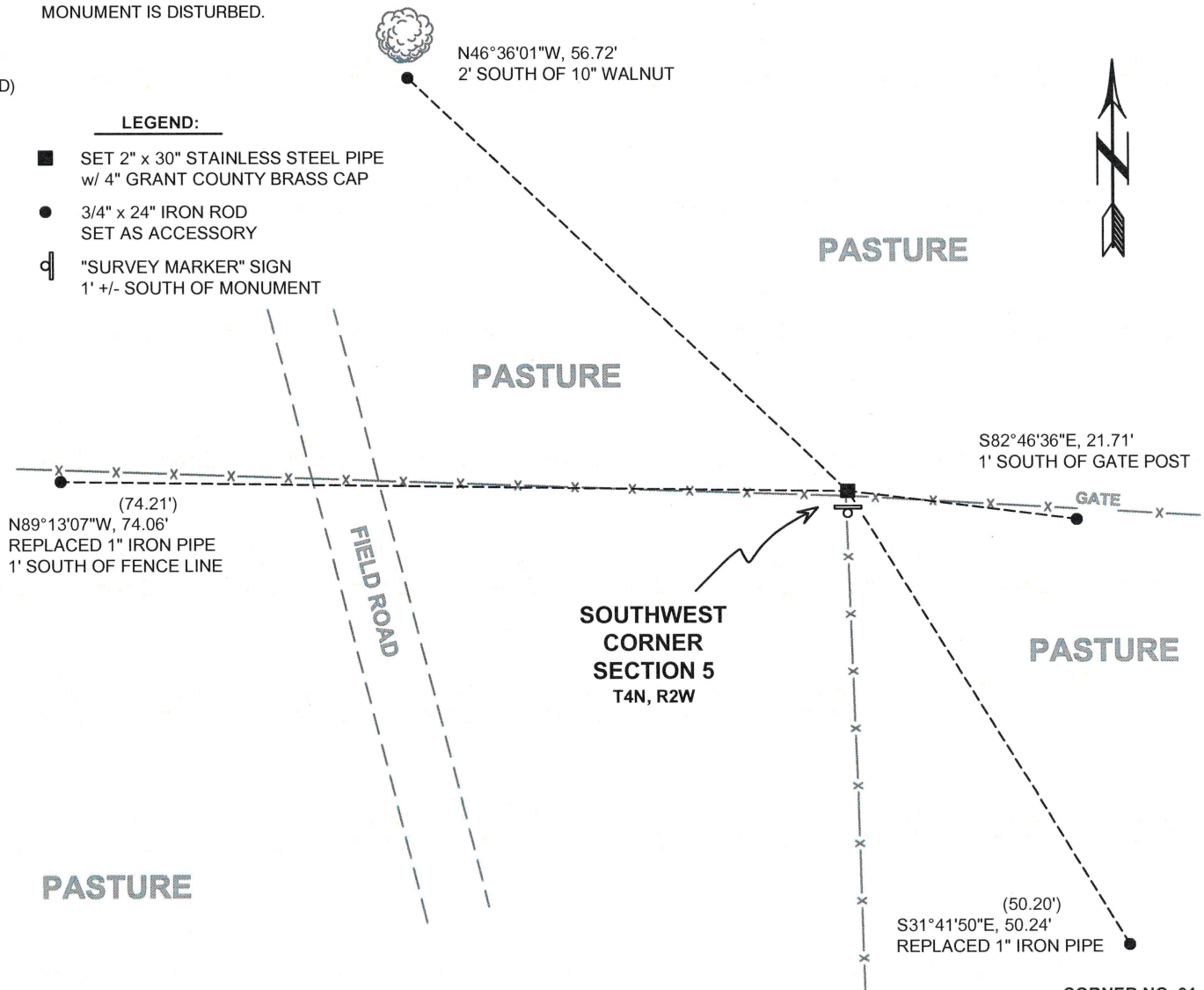
I COULD FIND NO MONUMENTS OR BEARING TREES FROM THE ORIGINAL GOVERNMENT SURVEY. I RECOVERED THE GRANT COUNTY ALUMINUM MONUMENT SET BY LARRY AUSTIN. I ACCEPTED THIS LOCATION AS THE BEST AVAILABLE EVIDENCE OF THE ORIGINAL GOVERNMENT CORNER AND REMONUMENTED IT WITH A 2" x 30" STAINLESS STEEL PIPE WITH A 4" GRANT COUNTY BRASS CAP.

(C) IN THE PLAN VIEW DRAWING BELOW, PROVIDE REFERENCE TIES TO AT LEAST 4 WITNESS MONUMENTS. WITNESS MONUMENTS SHALL BE MADE OF CONCRETE, NATURAL STONE, IRON, BEARING TREES OR ANY OTHER EQUALLY DURABLE MATERIAL. DEPICT THE RELEVANT MONUMENTS AND REFERENCE TIES WITH SUFFICIENT DETAIL TO ENABLE ACCURATE RELOCATION OF THE CORNER IF THE CORNER MONUMENT IS DISTURBED.

(D)

**LEGEND:**

- SET 2" x 30" STAINLESS STEEL PIPE w/ 4" GRANT COUNTY BRASS CAP
- 3/4" x 24" IRON ROD SET AS ACCESSORY
- ⊞ "SURVEY MARKER" SIGN 1' +/- SOUTH OF MONUMENT



(E) DESCRIBE ANY MATERIAL DISCREPANCY BETWEEN THE LOCATION OF THE CORNER AS RESTORED OR REESTABLISHED AND THE LOCATION OF THAT CORNER AS PREVIOUSLY RESTORED OR REESTABLISHED BY DISTANCE AND DIRECTION. SHOW THE DISCREPANCY ON THE PLAN VIEW DRAWING UNDER (D), ABOVE. SHOW THE DISTANCES BETWEEN THE CORNER AS PREVIOUSLY RESTORED OR REESTABLISHED AND (1) THE CORNER AS RESTORED OR REESTABLISHED, AND (2) TO AT LEAST 2 OF THE WITNESS MONUMENTS SHOWN ON THE DRAWING IN (D) ABOVE.

N/A

(F) WAS THE CORNER RESTORED THROUGH ACCEPTANCE OF (1) AN OBLITERATED EVIDENCE LOCATION, OR (2) A FOUND PERPETUATED LOCATION?

(2) A FOUND PERPETUATED LOCATION.

(G&H) WAS THE CORNER REESTABLISHED THROUGH LOST CORNER PROPORTIONATE METHODS? IF SO, SHOW THE METHOD, INCLUDING THE DIRECTIONS AND DISTANCES TO OTHER PUBLIC LAND SURVEY CORNERS USED AS EVIDENCE OR USED FOR PROPORTIONING IN DETERMINING THE CORNER LOCATION.

N/A

CORNER HISTORY

THE ORIGINAL GOVERNMENT CORNER WAS ESTABLISHED BY ROBERT CLARK JR. IN THE FIRST QUARTER OF 1833.

IN A CERTIFIED SURVEY MAP DATED 16 JANUARY 1981, LAURENCE SCHMIT MEASURED TO CORNER WITH NO MENTION OF A MONUMENT.

IN A PLAT OF SURVEY DATED 30 MAY 1995 AND SUBSEQUENT TIE SHEET DATED 5 DECEMBER 1995, LARRY AUSTIN SET A GRANT COUNTY ALUMINUM MONUMENT AT THE CORNER.

IN A CERTIFIED SURVEY MAP DATED 17 OCTOBER 2000, LARRY AUSTIN FOUND A GRANT COUNTY ALUMINUM MONUMENT AT THE CORNER.

IN A PLAT OF SURVEY DATED 14 SEPTEMBER 2007, LARRY AUSTIN FOUND A GRANT COUNTY ALUMINUM MONUMENT AT THE CORNER.

IN A PLAT OF SURVEY DATED 2 APRIL 2008, LARRY AUSTIN FOUND A GRANT COUNTY ALUMINUM MONUMENT AT THE CORNER.

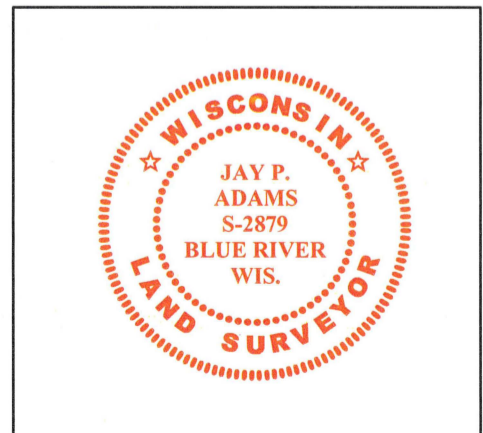
(I) I, JAY P. ADAMS, P.L.S. - 2879, CERTIFY THAT THE CORNER LOCATION SHOWN ON THIS RECORD WAS DETERMINED BY ME OR UNDER MY DIRECTION AND CONTROL AND THAT THIS U.S. PUBLIC LAND SURVEY MONUMENT RECORD IS CORRECT AND COMPLETE TO THE BEST OF MY KNOWLEDGE AND BELIEF.

10 FEBRUARY 2020

SIGNATURE

DATE

AFFIX LAND SURVEYOR SEAL



# GRANT COUNTY

## Survey Monument Record

TYPE OF MONUMENT COUNTY ALUMINUM MON.

STATE PLANE COORDINATES: N \_\_\_\_\_  
E \_\_\_\_\_

ELEVATION — M.S.L. DATUM: \_\_\_\_\_

THETA ANGLE: \_\_\_\_\_

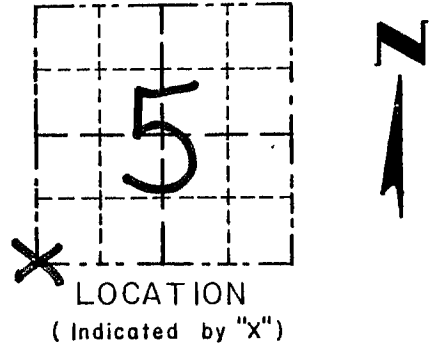
FIELD BOOK: 9505

PAGE 24

CORNER NO. 31  
SECTION 5  
TOWN 4N  
RANGE 2W

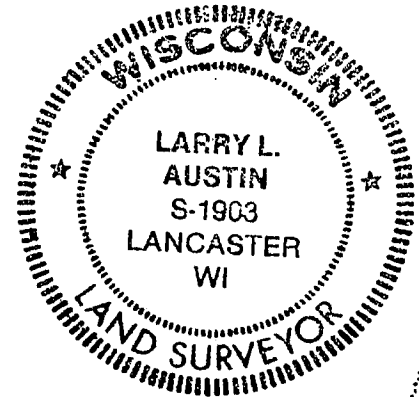
### BASIS FOR MONUMENT LOCATION

(Use reverse side if necessary)



AN EAST-WEST FENCE WAS USED FOR THE NORTH-SOUTH LOCATION AND DOUBLED 40 OVER FROM THE EAST TO SET THE EAST-WEST LOCATION AND VERIFIED BY EDM TRAVERSE OF THE AREA.

SEAL:



CERTIFIED CORRECT

*Larry L. Austin*  
Registered Land Surveyor

DATE: 12/5/95

### TIE SKETCH

Show at least three (3) ties and monument

### LEGEND

- ⊕ COUNTY ALUMINUM MONUMENT SET
- 1" X 12" IRON PIPES SET = TIES
- X — X — EXISTING FENCE

