

Remon  
42030

# GRANT COUNTY U.S. PUBLIC LAND SURVEY MONUMENT RECORD

INSTRUCTIONS: THIS RECORD SHALL SHOW THE LOCATION OF THE CORNER AND SHALL INCLUDE ALL OF THE FOLLOWING ELEMENTS (A THROUGH I).

(A) IDENTIFY THE CORNER AS REFERENCED TO THE U.S. PUBLIC LAND SURVEY SYSTEM

■ = CORNER MONUMENT RESTORED

WITNESSES TO CORNER LOCATION:

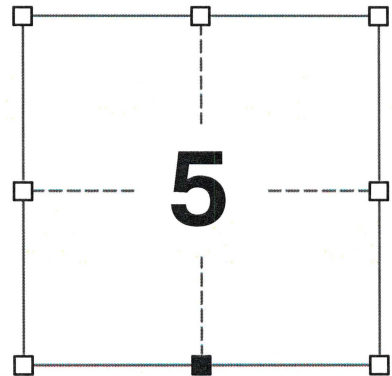
JAMIE L. BRANDT  
TYLER D. ATKINSON

GEOGRAPHIC COORDINATES,  
NAD 83 (2011) ADJUSTMENT:

LATITUDE: 42° 50' 31.75134"  
LONGITUDE: 90° 38' 07.24506"

WISCONSIN COORDINATE REFERENCE SYSTEM (WISCRS),  
GRANT COUNTY, NAD 83 (2011) ADJUSTMENT:

NORTHING: 521,563.207  
EASTING: 839,162.795



SECTION 5  
TOWNSHIP 4 NORTH, RANGE 2 WEST  
TOWN OF ELLENBORO

(B) DESCRIBE ANY RECORD EVIDENCE, MONUMENT EVIDENCE, OCCUPATIONAL EVIDENCE, TESTIMONIAL EVIDENCE OR ANY OTHER MATERIAL EVIDENCE YOU CONSIDERED, AND WHETHER THE MONUMENT WAS FOUND OR PLACED.

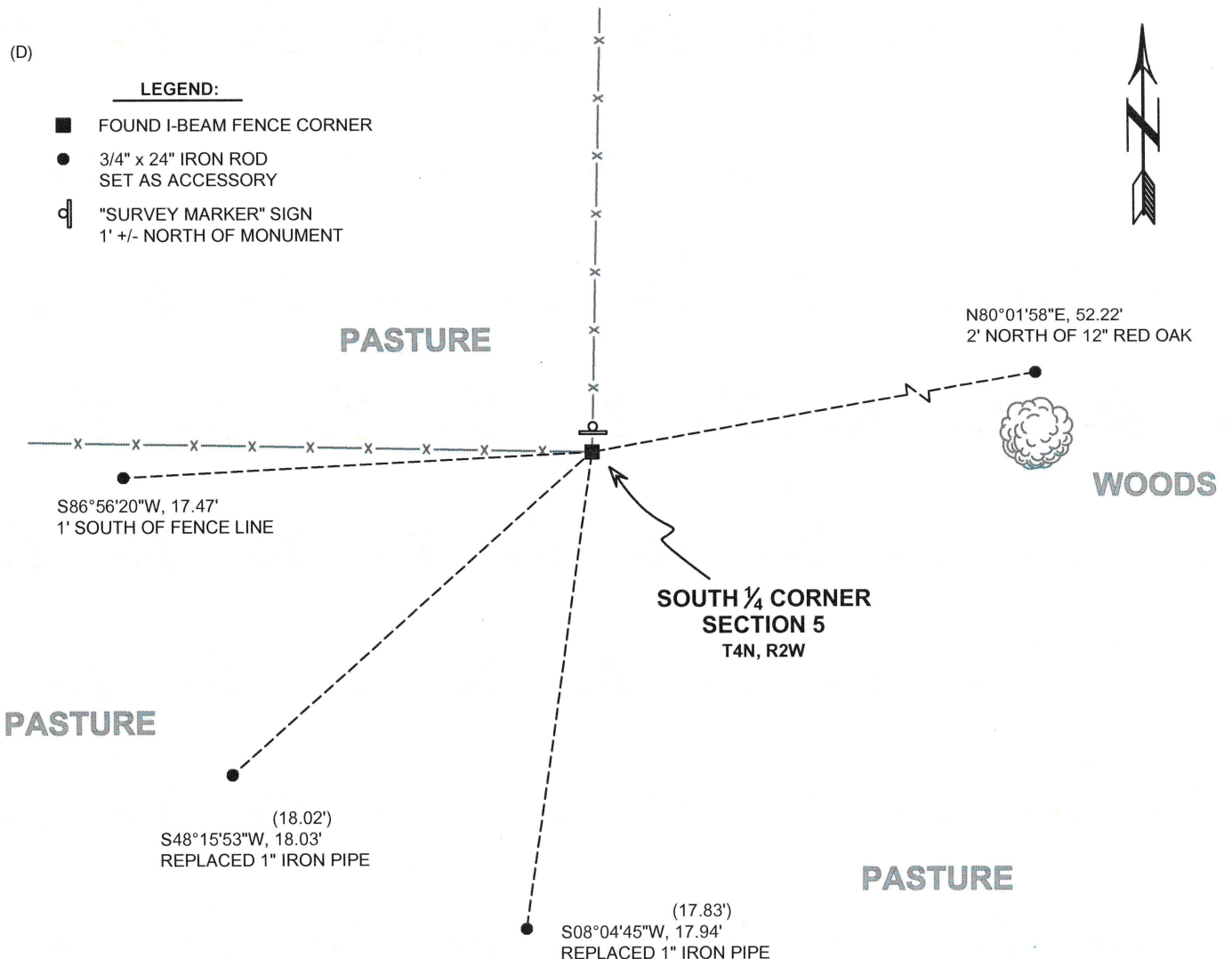
I COULD FIND NO MONUMENTS OR BEARING TREES FROM THE ORIGINAL GOVERNMENT SURVEY. I RECOVERED THE "I" BEAM CORNER POST FOUND BY LARRY AUSTIN. I ACCEPTED THIS LOCATION AS THE BEST AVAILABLE EVIDENCE OF THE ORIGINAL GOVERNMENT CORNER.

(C) IN THE PLAN VIEW DRAWING BELOW, PROVIDE REFERENCE TIES TO AT LEAST 4 WITNESS MONUMENTS. WITNESS MONUMENTS SHALL BE MADE OF CONCRETE, NATURAL STONE, IRON, BEARING TREES OR ANY OTHER EQUALLY DURABLE MATERIAL. DEPICT THE RELEVANT MONUMENTS AND REFERENCE TIES WITH SUFFICIENT DETAIL TO ENABLE ACCURATE RELOCATION OF THE CORNER IF THE CORNER MONUMENT IS DISTURBED.

(D)

**LEGEND:**

- FOUND I-BEAM FENCE CORNER
- 3/4" x 24" IRON ROD SET AS ACCESSORY
- ⊕ "SURVEY MARKER" SIGN 1' +/- NORTH OF MONUMENT



42030

(E) DESCRIBE ANY MATERIAL DISCREPANCY BETWEEN THE LOCATION OF THE CORNER AS RESTORED OR REESTABLISHED AND THE LOCATION OF THAT CORNER AS PREVIOUSLY RESTORED OR REESTABLISHED BY DISTANCE AND DIRECTION. SHOW THE DISCREPANCY ON THE PLAN VIEW DRAWING UNDER (D), ABOVE. SHOW THE DISTANCES BETWEEN THE CORNER AS PREVIOUSLY RESTORED OR REESTABLISHED AND (1) THE CORNER AS RESTORED OR REESTABLISHED, AND (2) TO AT LEAST 2 OF THE WITNESS MONUMENTS SHOWN ON THE DRAWING IN (D) ABOVE.

N/A

(F) WAS THE CORNER RESTORED THROUGH ACCEPTANCE OF (1) AN OBLITERATED EVIDENCE LOCATION, OR (2) A FOUND PERPETUATED LOCATION?

(2) A FOUND PERPETUATED LOCATION.

(G&H) WAS THE CORNER REESTABLISHED THROUGH LOST CORNER PROPORTIONATE METHODS? IF SO, SHOW THE METHOD, INCLUDING THE DIRECTIONS AND DISTANCES TO OTHER PUBLIC LAND SURVEY CORNERS USED AS EVIDENCE OR USED FOR PROPORTIONING IN DETERMINING THE CORNER LOCATION.

N/A

CORNER HISTORY

THE ORIGINAL GOVERNMENT CORNER WAS ESTABLISHED BY ROBERT CLARK JR. IN THE FIRST QUARTER OF 1833.

IN A PLAT OF SURVEY DATED 30 MAY 1995, LARRY AUSTIN FOUND AN "I" BEAM POST IN CONCRETE AT THE CORNER.

IN A PLAT OF SURVEY DATED 3 NOVEMBER 1995, LARRY AUSTIN FOUND AN "I" BEAM POST IN CONCRETE AT THE CORNER.

IN A TIE SHEET DATED 5 DECEMBER 1995, LARRY AUSTIN FOUND AN "I" BEAM CORNER POST AT THE CORNER.

IN A CERTIFIED SURVEY MAP DATED 7 MARCH 2000, LARRY AUSTIN FOUND AN "I" BEAM POST AT THE CORNER.

IN A PLAT OF SURVEY DATED 3 OCTOBER 2003, LARRY AUSTIN FOUND AN "I" BEAM POST AT THE CORNER.

IN A PLAT OF SURVEY DATED 20 JANUARY 2010, LARRY AUSTIN FOUND AN "I" BEAM POST AT THE CORNER.

IN A PLAT OF SURVEY DATED 18 MAY 2010, LARRY AUSTIN FOUND AN "I" BEAM POST AT THE CORNER.

IN A PLAT OF SURVEY DATED 28 AUGUST 2013, LARRY AUSTIN FOUND AN "I" BEAM POST AT THE CORNER.

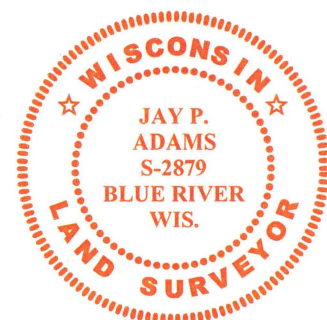
AFFIX LAND SURVEYOR SEAL

(I) I, JAY P. ADAMS, P.L.S. - 2879, CERTIFY THAT THE CORNER LOCATION SHOWN ON THIS RECORD WAS DETERMINED BY ME OR UNDER MY DIRECTION AND CONTROL AND THAT THIS U.S. PUBLIC LAND SURVEY MONUMENT RECORD IS CORRECT AND COMPLETE TO THE BEST OF MY KNOWLEDGE AND BELIEF.

SIGNATURE

10 FEBRUARY 2020

DATE



# GRANT COUNTY

## Survey Monument Record

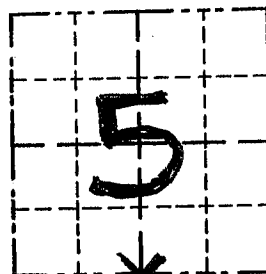
TYPE OF MONUMENT I-BEAM POST  
 STATE PLANE COORDINATES: N \_\_\_\_\_  
 E \_\_\_\_\_  
 ELEVATION — M.S.L. DATUM: \_\_\_\_\_  
 THETA ANGLE: \_\_\_\_\_  
 FIELD BOOK: 9505  
 PAGE 24

CORNER NO. 30  
 SECTION 5  
 TOWN 4 N  
 RANGE 2 W  
S 1/4 COR.

### BASIS FOR MONUMENT LOCATION

(Use reverse side if necessary)

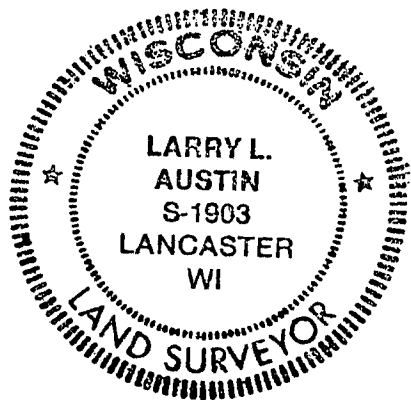
Show info such as: History of corner, with reference to Vol. and pg., dates, surveyor; exact description of monument replaced; if location computed, by taped or EDM traverse; landowner, remarks, etc.



LOCATION  
(Indicated by "X")

SEAL:

AN I-BEAM CORNER POST WAS ACCEPTED AT THE OCCUPATIONAL FENCE CORNER AND VERIFIED BY EDM TRAVERSE OF THE AREA



CERTIFIED CORRECT

*Larry L. Austin*  
 Registered Land Surveyor

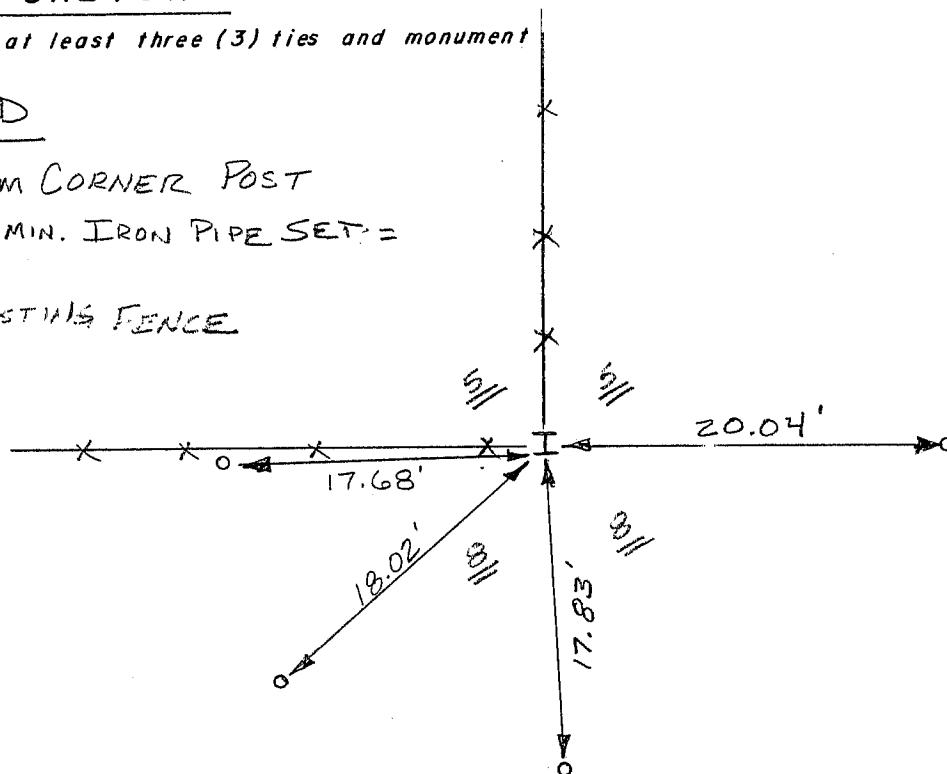
DATE: 12-5-95

### TIE SKETCH

Show at least three (3) ties and monument

#### LEGEND

- I = I-BEAM CORNER POST
- o = 1" x 12" MIN. IRON PIPE SET = TIES
- \* \* \* \* \* EXISTING FENCE



NO SCALE