

U.S. PUBLIC LAND SURVEY MONUMENT RECORD - GRANT COUNTY, WI

Section 5, Town 4 North Range 2 West, Town of Ellenboro (a)

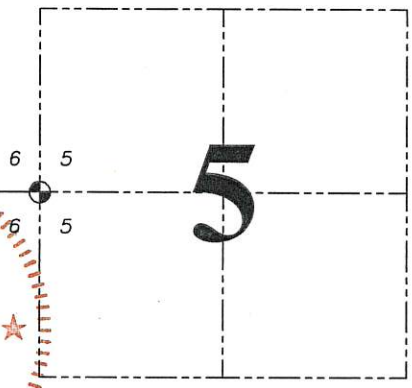
NOTE: This form is intended and designed to fulfill all requirements of the Wisconsin Administrative Code Chapter A-E 7.08, U.S. Public Land Survey Monument Record (3) (a) (b) (c) (d) (e) (f) (g) (h) (i).

CERTIFICATE: (i)

I, Aaron J. Austin, Wisconsin Professional Land Surveyor, do hereby certify that the corner location on this record was determined by me and/or under my direct supervision and that this U.S. Public Land Survey Monument Record is correct and complete to the best of my knowledge and belief.

Dated this 26th day of September, 2018.

Aaron J. Austin
Aaron J. Austin, S-2922



⊕ = CORNER LOCATION

Grant County Coordinates:
NAD 83 (2011)
Northing: 524,259.42
Easting: 836,455.82

HISTORY OF CORNER ESTABLISHMENT:

Laurence Schmit prepared a Survey Monument Record dated 10-31-1983.

DESCRIPTION OF CORNER EVIDENCE FOUND: (b) (f) (g) (h)

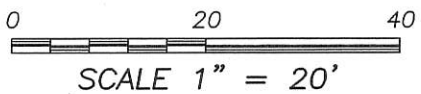
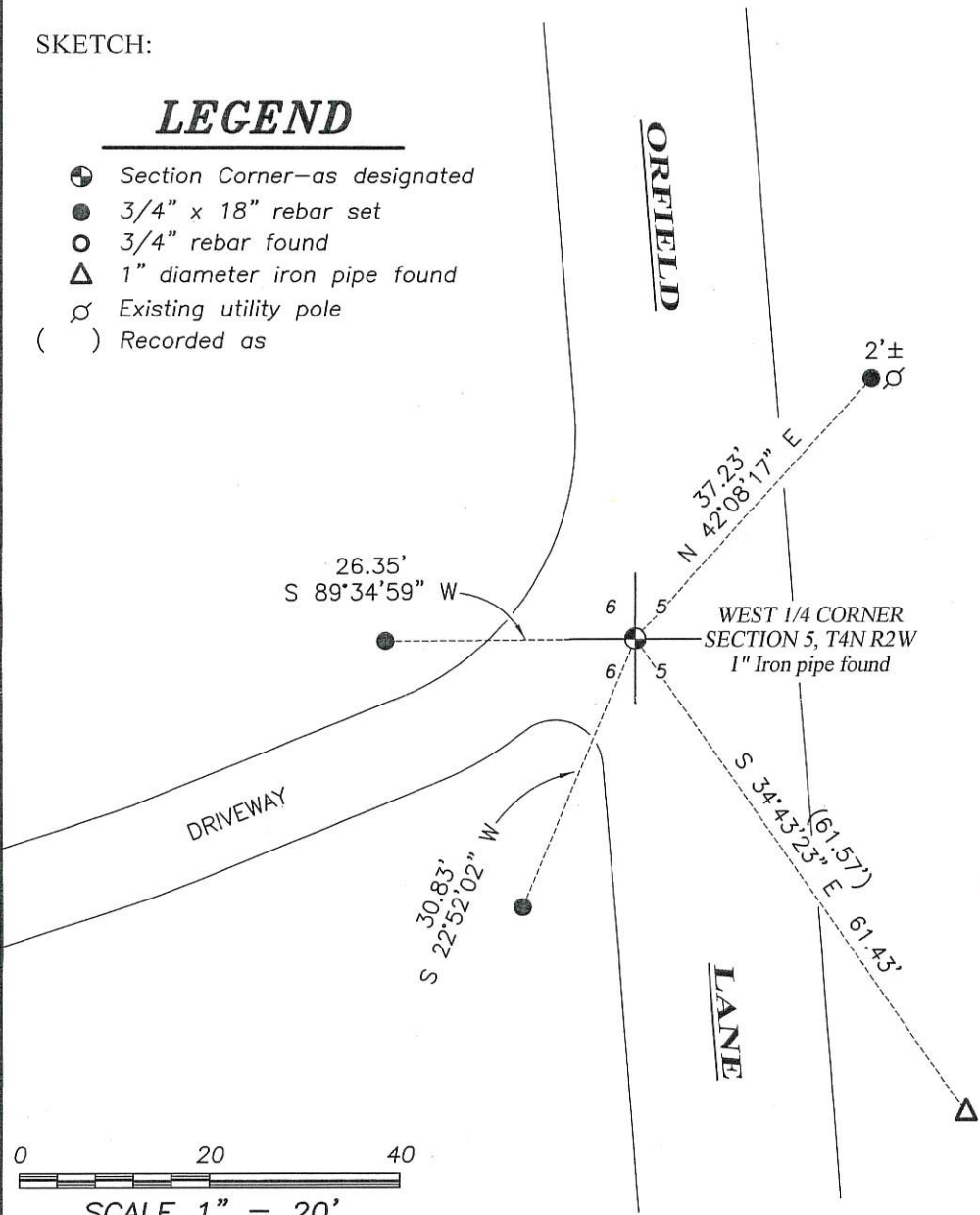
I found the 1" Iron pipe as referenced by Laurence Schmit and one witness corner. I set three additional witness corners after I verified the monument's location with with G.P.S. and E.D.M. methods.

DESCRIPTION OF CORNER AND WITNESS MONUMENTS, references and accessories used to perpetuate the original or re-established location of this corner. (c) (d) (e)
Witnesses to corner location Shane Austin, Owen Austin.

SKETCH:

LEGEND

- ⊕ Section Corner—as designated
- 3/4" x 18" rebar set
- 3/4" rebar found
- △ 1" diameter iron pipe found
- ⊘ Existing utility pole
- () Recorded as



U.S. PUBLIC LAND SURVEY MONUMENT RECORD - GRANT COUNTY, WI

Section 5, Town 4 North Range 2 West, Town of Ellenboro (a)

NOTE: This form is intended and designed to fulfill all requirements of the Wisconsin Administrative Code Chapter A-E 7.08, U.S. Public Land Survey Monument Record (3) (a) (b) (c) (d) (e) (f) (g) (h) (i).

CERTIFICATE: (i)

I, Aaron J. Austin, Wisconsin Professional Land Surveyor, do hereby certify that the corner location on this record was determined by me and/or under my direct supervision and that this U.S. Public Land Survey Monument Record is correct and complete to the best of my knowledge and belief.

Dated this 26th day of September, 2018.

Aaron J. Austin
 Aaron J. Austin, S-2922



⊕ = CORNER LOCATION

Grant County Coordinates:
 NAD 83 (2011)
 Northing: 524,259.42
 Easting: 836,455.82

HISTORY OF CORNER ESTABLISHMENT:

Laurence Schmit prepared a Survey Monument Record dated 10-31-1983.

DESCRIPTION OF CORNER EVIDENCE FOUND: (b) (f) (g) (h)

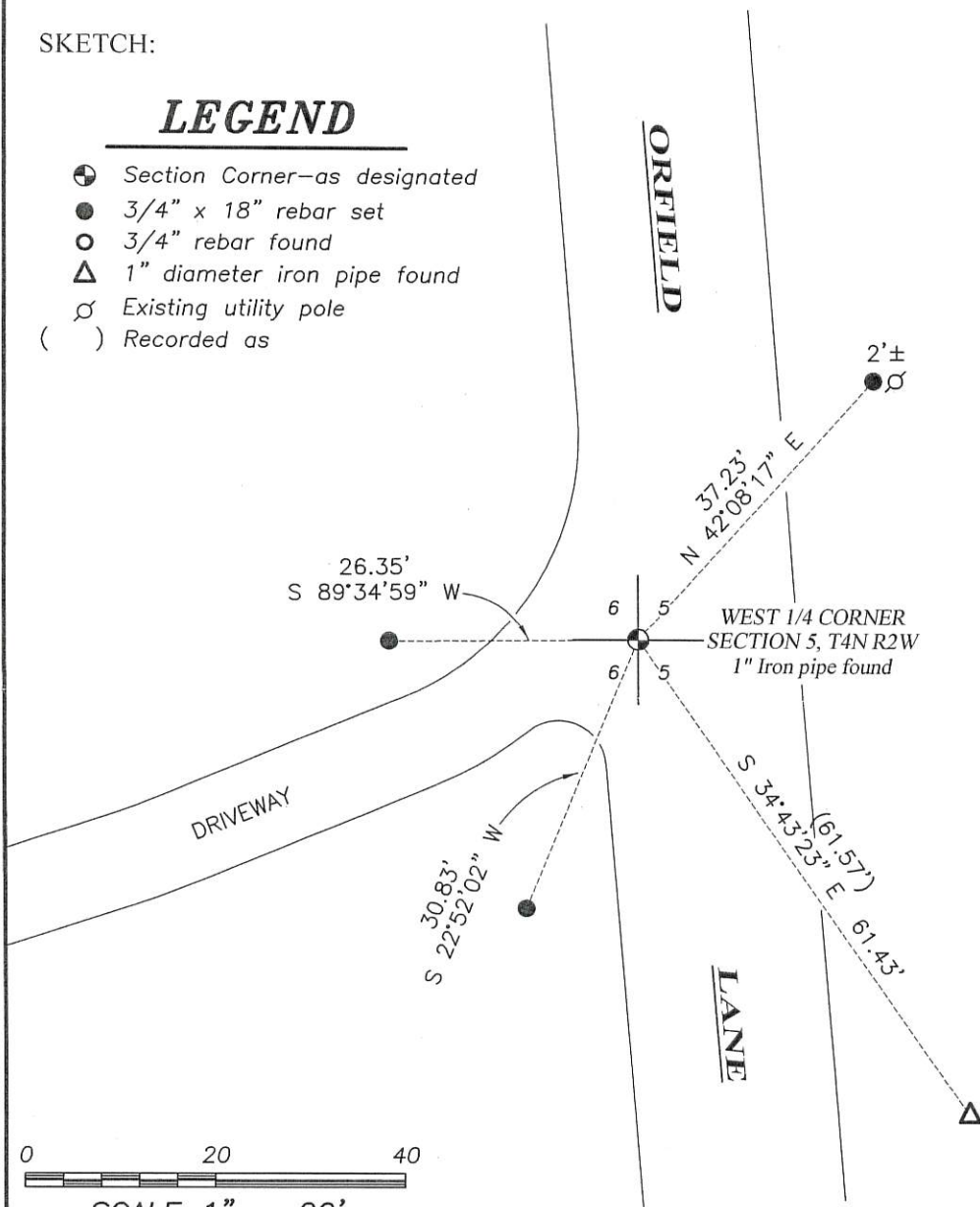
I found the 1" Iron pipe as referenced by Laurence Schmit and one witness corner. I set three additional witness corners after I verified the monument's location with with G.P.S. and E.D.M. methods.

DESCRIPTION OF CORNER AND WITNESS MONUMENTS, references and accessories used to perpetuate the original or re-established location of this corner. (c) (d) (e)
 Witnesses to corner location Shane Austin, Owen Austin.

SKETCH:

LEGEND

- ⊕ Section Corner—as designated
- 3/4" x 18" rebar set
- 3/4" rebar found
- △ 1" diameter iron pipe found
- ⊘ Existing utility pole
- () Recorded as



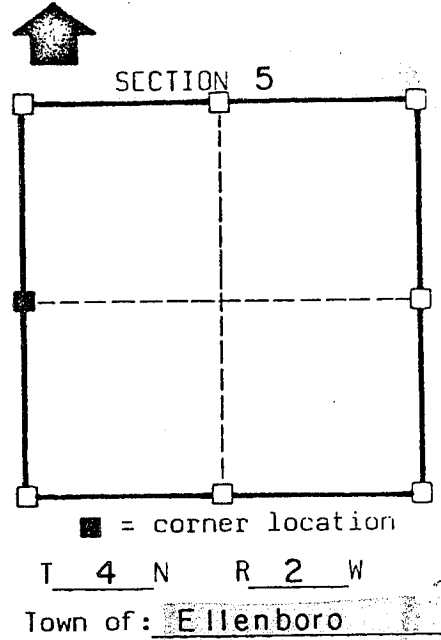
CERTIFIED LAND CORNER

STATE OF WISCONSIN) S.S.
 COUNTY OF GRANT)

I, LAURENCE E. SCHMIT, do hereby certify that on the 28th day of Oct 1983, I found (evidence) (~~no evidence~~) of the W 1/4 corner of Sec 5, T4N, R2W, Fourth Principal Meridian, and I ~~re-established~~ perpetuated said corner according to the Wisconsin Statutes as shown and described hereon.

Dated this 31 day of October 1983

Laurence E. Schmit
 Title



Seal

History of original corner establishment:

Original Gov't Survey
Survey for Gene & Darlene Meyers dated 6-11-83
Survey # Brian Fager dated 7-6-1977 Survey for Ken Johnson dated June 11

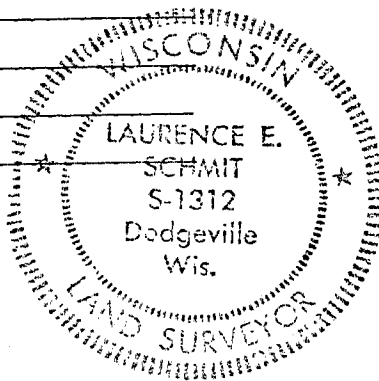
Description of corner evidence found:

1" Iron pipe

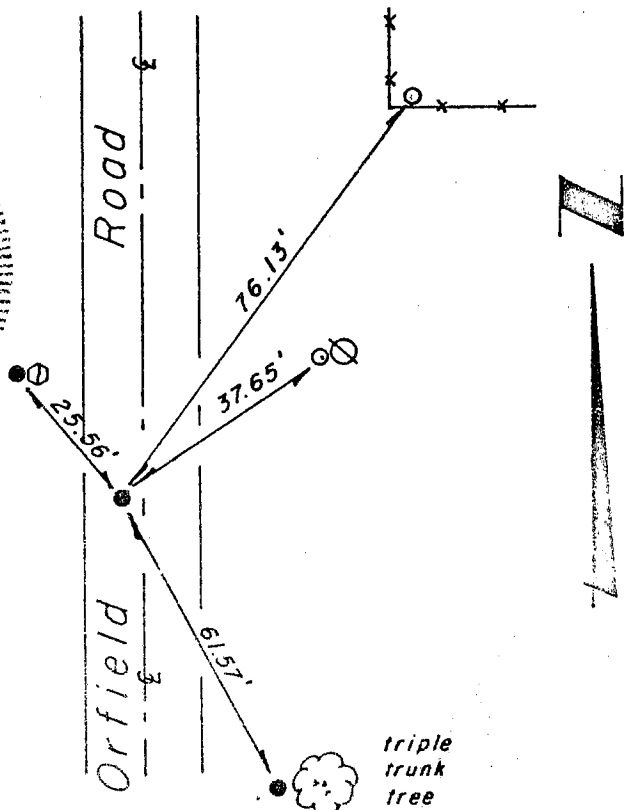
Description of corner and witness monuments, references and accessories used to perpetuate the original or re-established location of this corner:

Witnesses to corner location:

JAMES OLSON RLS
KEVIN REVER



Sketch:



Legend

- 1" Ø Iron pipe
- 1-1/2" Ø Iron pipe
- ⊕ Telephone pedestal
- ⊙ Power pole
- *—*— Fenceline

SURVEY CONTROL TABLE

Horizontal		Vertical		WISCONSIN COORDINATE SYSTEM	
Course	East (X)	North (Y)	Elevation (Z)	Zone	
Control Point Name					