

GRANT COUNTY U.S. PUBLIC LAND SURVEY MONUMENT RECORD

INSTRUCTIONS: THIS RECORD SHALL SHOW THE LOCATION OF THE CORNER AND SHALL INCLUDE ALL OF THE FOLLOWING ELEMENTS (A THROUGH I).

(A) IDENTIFY THE CORNER AS REFERENCED TO THE U.S. PUBLIC LAND SURVEY SYSTEM

■ = CORNER MONUMENT RESTORED

WITNESSES TO CORNER LOCATION:

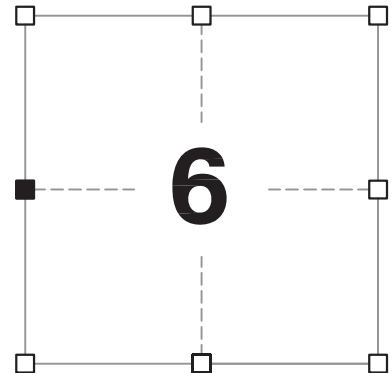
STEVEN A. ALT
BRADLEY A. SCHROEDER

GEOGRAPHIC COORDINATES,
NAD 83 (2011) ADJUSTMENT:

LATITUDE: 42° 50' 59.27707"
LONGITUDE: 90° 39' 52.77961"

WISCONSIN COORDINATE REFERENCE SYSTEM (WISCRS),
GRANT COUNTY, NAD 83 (2011) ADJUSTMENT:

NORTHING: 524,336.04
EASTING: 831,295.54



SECTION 6
TOWNSHIP 4 NORTH, RANGE 2 WEST
TOWN OF ELLENBORO

(B) DESCRIBE ANY RECORD EVIDENCE, MONUMENT EVIDENCE, OCCUPATIONAL EVIDENCE, TESTIMONIAL EVIDENCE OR ANY OTHER MATERIAL EVIDENCE YOU CONSIDERED, AND WHETHER THE MONUMENT WAS FOUND OR PLACED.

I COULD FIND NO MONUMENTS OR BEARING TREES FROM THE HISTORIC COUNTY SURVEYOR'S RESURVEY. I RECOVERED A GRANT COUNTY ALUMINUM CAP AT THE LOCATION REFERENCED IN AUSTIN'S TIE SHEET. BECAUSE THE MONUMENT WAS BURIED AND THE GROUND WAS FROZEN, I WAS UNABLE TO DETERMINE IF THE CAP IS ON A #6 OR A #8 REBAR. THE MONUMENT WAS LEFT IN PLACE BECAUSE OF EXCEPTIONAL STABILITY.

(C) IN THE PLAN VIEW DRAWING BELOW, PROVIDE REFERENCE TIES TO AT LEAST 4 WITNESS MONUMENTS. WITNESS MONUMENTS SHALL BE MADE OF CONCRETE, NATURAL STONE, IRON, BEARING TREES OR ANY OTHER EQUALLY DURABLE MATERIAL. DEPICT THE RELEVANT MONUMENTS AND REFERENCE TIES WITH SUFFICIENT DETAIL TO ENABLE ACCURATE RELOCATION OF THE CORNER IF THE CORNER MONUMENT IS DISTURBED.

(D)

LEGEND:

- FOUND GRANT COUNTY ALUMINUM CAP
- FOUND #8 REBAR w/ GRANT COUNTY ALUMINUM CAP
- 3/4" x 24" IRON ROD SET AS ACCESSORY
- ⊓ "SURVEY MARKER" SIGN 0.5' NORTH OF TIE

(N01°52'11"E) (424.71')
N01°45'36"E, 424.69'
REPLACED DISTURBED #4
REBAR IN FENCE



N04°30'00"E, 296.77'
2' SOUTH OF FENCE
CORNER

PASTURE

FIELD

FIELD

FIELD

**E 1/4 CORNER
SECTION 1
T4N, R3W
(BURIED 16 INCHES)**

**W 1/4 CORNER
SECTION 6
T4N, R2W
(BURIED 16 INCHES)**

(N65°41'50"W)(337.49')
N65°48'48"W, 337.68'
FOUND #6 REBAR
0.5' SOUTH OF FENCE

(N01°05'36"W)(90.42')
N01°11'42"W, 90.74'

Remonumentation

- (E) DESCRIBE ANY MATERIAL DISCREPANCY BETWEEN THE LOCATION OF THE CORNER AS RESTORED OR REESTABLISHED AND THE LOCATION OF THAT CORNER AS PREVIOUSLY RESTORED OR REESTABLISHED BY DISTANCE AND DIRECTION. SHOW THE DISCREPANCY ON THE PLAN VIEW DRAWING UNDER (D), ABOVE. SHOW THE DISTANCES BETWEEN THE CORNER AS PREVIOUSLY RESTORED OR REESTABLISHED AND (1) THE CORNER AS RESTORED OR REESTABLISHED, AND (2) TO AT LEAST 2 OF THE WITNESS MONUMENTS SHOWN ON THE DRAWING IN (D) ABOVE.

N/A

- (F) WAS THE CORNER RESTORED THROUGH ACCEPTANCE OF (1) AN OBLITERATED EVIDENCE LOCATION, OR (2) A FOUND PERPETUATED LOCATION?

(2) A FOUND PERPETUATED LOCATION.

- (G&H) WAS THE CORNER REESTABLISHED THROUGH LOST CORNER PROPORTIONATE METHODS? IF SO, SHOW THE METHOD, INCLUDING THE DIRECTIONS AND DISTANCES TO OTHER PUBLIC LAND SURVEY CORNERS USED AS EVIDENCE OR USED FOR PROPORTIONING IN DETERMINING THE CORNER LOCATION.

N/A

CORNER HISTORY

THIS CORNER WAS NOT ESTABLISHED BY THE ORIGINAL GOVERNMENT SURVEY.

IN A SURVEY DATED 18 DECEMBER 1850, GEO. STUNTZ WAS AT THE CORNER.

IN A TIE SHEET DATED 13 AUGUST 1999, THOMAS BUCK SET A 3/4" x 24" IRON ROD AT LOCATION THAT USED A COMBINATION OF OCCUPATION EVIDENCE AND PROPORTIONAL MEASUREMENTS.

IN A PLAT OF SURVEY DATED 3 JUNE 2006, LARRY AUSTIN FOUND THE 3/4" REBAR.

IN TWO PLATS OF SURVEY IN APRIL 2008, LARRY AUSTIN REPORTS A #8 x 30" REBAR WITH GRANT COUNTY ALUMINUM CAP AT THE CORNER.

IN A TIE SHEET DATED 25 JUNE 2008, LARRY AUSTIN REPORTS FINDING A #6 REBAR AT THE CORNER.

- (I) I, JAY P. ADAMS, P.L.S. - 2879, CERTIFY THAT THE CORNER LOCATION SHOWN ON THIS RECORD WAS DETERMINED BY ME OR UNDER MY DIRECTION AND CONTROL AND THAT THIS U.S. PUBLIC LAND SURVEY MONUMENT RECORD IS CORRECT AND COMPLETE TO THE BEST OF MY KNOWLEDGE AND BELIEF.

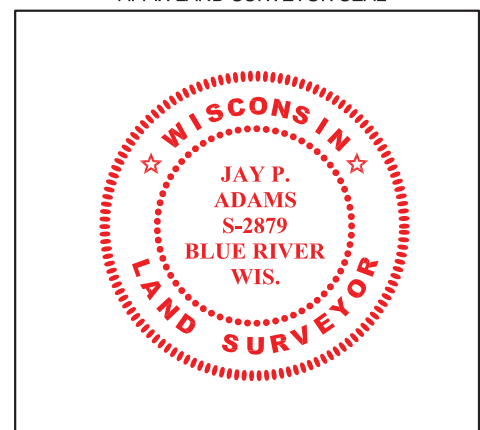


SIGNATURE

7 JANUARY 2019

DATE

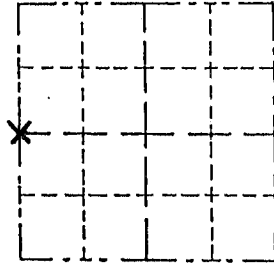
AFFIX LAND SURVEYOR SEAL



Survey Monument Record

CORNER NO. _____
 SECTION 6
 TOWN 4 NORTH
 RANGE 2 WEST

TYPE OF MONUMENT 3/4" X 24" Iron Rod
 STATE PLANE COORDINATES: N _____
 E _____
 ELEVATION — M.S.L. DATUM: _____
 THETA ANGLE: _____
 FIELD BOOK: _____
 PAGE _____



BASIS FOR MONUMENT LOCATION

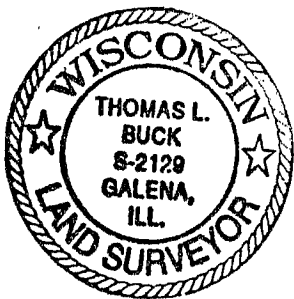
(Use reverse side if necessary)

Show info such as: History of corner, with reference to Vol. and pg., dates, surveyor; exact description of monument replaced; if location computed, by taped or EDM traverse; landowner, remarks, etc.

LOCATION
 (Indicated by "X")

- FOUND PERPETUATED LOCATION
- OBLITERATED EVIDENCE LOCATION
- LOST CORNER (RESTORED BY PROPORTIONATE METHODS)

I FOUND NO HISTORY OF THIS CORNER SINCE THE ORIGINAL GOVERNMENT SURVEY. I USED A BEST FIT ON A N-S FENCE LINE FOR MY EAST-WEST LOCATION AND I USED A PROPORTIONED DISTANCE FROM THE SW CORNER FOR MY NORTH-SOUTH POSITION. AFTER AN E.D.M. TRAVERSE & LOCATION SURVEY OF THE AREA.

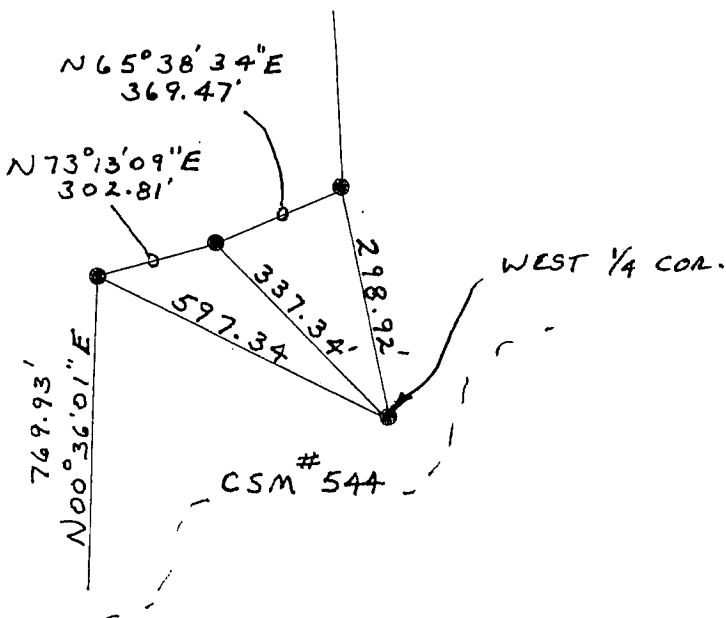


CERTIFIED CORRECT TO THE BEST OF MY KNOWLEDGE AND BELIEF

Thomas Buck
 Registered Land Surveyor
 DATE: 8/13/99

TIE SKETCH

Show at least three (3) ties and monument



No SCALE

● = 3/4" X 24" Iron Rod