

Remon
42012

GRANT COUNTY U.S. PUBLIC LAND SURVEY MONUMENT RECORD

INSTRUCTIONS: THIS RECORD SHALL SHOW THE LOCATION OF THE CORNER AND SHALL INCLUDE ALL OF THE FOLLOWING ELEMENTS (A THROUGH I).

(A) IDENTIFY THE CORNER AS REFERENCED TO THE U.S. PUBLIC LAND SURVEY SYSTEM

■ = CORNER MONUMENT RESTORED

WITNESSES TO CORNER LOCATION:

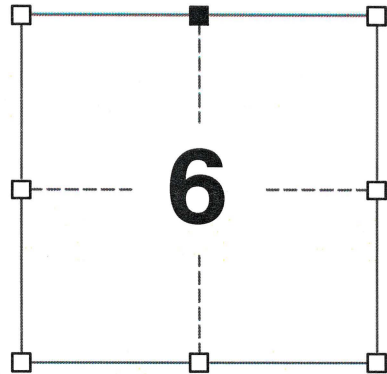
BRADLEY A. SCHROEDER
JAMIE L. BRANDT

GEOGRAPHIC COORDINATES,
NAD 83 (2011) ADJUSTMENT:

LATITUDE: 42° 51' 25.53259"
LONGITUDE: 90° 39' 19.93936"

WISCONSIN COORDINATE REFERENCE SYSTEM (WISCRS),
GRANT COUNTY, NAD 83 (2011) ADJUSTMENT:

NORTHING: 526,998.325
EASTING: 833,737.419



SECTION 6
TOWNSHIP 4 NORTH, RANGE 2 WEST
TOWN OF ELLENBORO

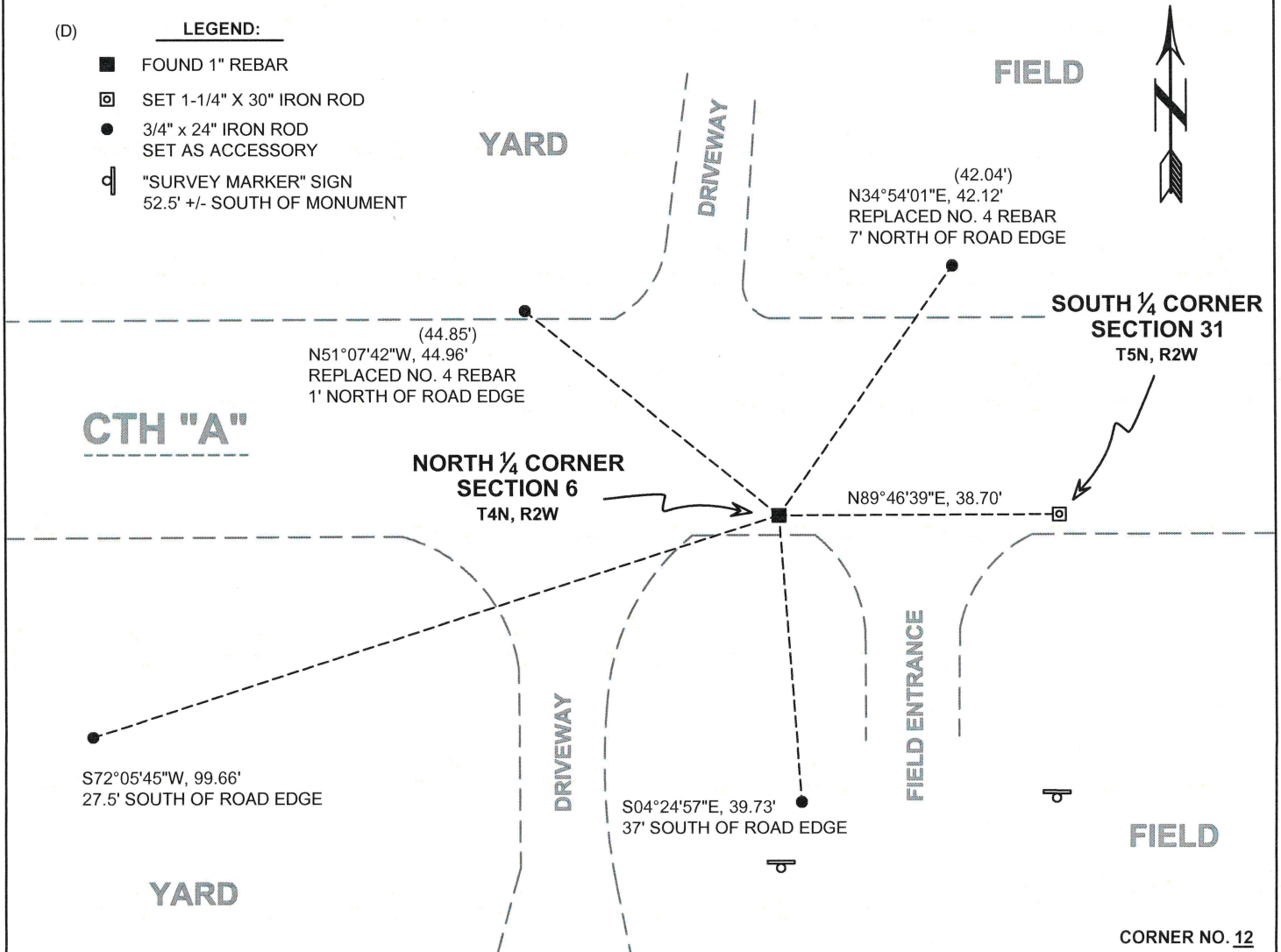
(B) DESCRIBE ANY RECORD EVIDENCE, MONUMENT EVIDENCE, OCCUPATIONAL EVIDENCE, TESTIMONIAL EVIDENCE OR ANY OTHER MATERIAL EVIDENCE YOU CONSIDERED, AND WHETHER THE MONUMENT WAS FOUND OR PLACED.

I COULD FIND NO MONUMENTS OR BEARING TREES FROM THE ORIGINAL GOVERNMENT SURVEY OR THE HISTORIC COUNTY SURVEYOR'S SUBSEQUENT RESURVEY. I RECOVERED THE 1" REBAR REPORTED BY JANIAC. I ACCEPTED THIS LOCATION AS THE BEST AVAILABLE EVIDENCE OF THE ORIGINAL GOVERNMENT CORNER AND LEFT THIS MONUMENT IN PLACE.

(C) IN THE PLAN VIEW DRAWING BELOW, PROVIDE REFERENCE TIES TO AT LEAST 4 WITNESS MONUMENTS. WITNESS MONUMENTS SHALL BE MADE OF CONCRETE, NATURAL STONE, IRON, BEARING TREES OR ANY OTHER EQUALLY DURABLE MATERIAL. DEPICT THE RELEVANT MONUMENTS AND REFERENCE TIES WITH SUFFICIENT DETAIL TO ENABLE ACCURATE RELOCATION OF THE CORNER IF THE CORNER MONUMENT IS DISTURBED.

(D) LEGEND:

- FOUND 1" REBAR
- ⊠ SET 1-1/4" X 30" IRON ROD
- 3/4" x 24" IRON ROD SET AS ACCESSORY
- ⊏ "SURVEY MARKER" SIGN 52.5' +/- SOUTH OF MONUMENT



CORNER NO. 12

42012

(E) DESCRIBE ANY MATERIAL DISCREPANCY BETWEEN THE LOCATION OF THE CORNER AS RESTORED OR REESTABLISHED AND THE LOCATION OF THAT CORNER AS PREVIOUSLY RESTORED OR REESTABLISHED BY DISTANCE AND DIRECTION. SHOW THE DISCREPANCY ON THE PLAN VIEW DRAWING UNDER (D), ABOVE. SHOW THE DISTANCES BETWEEN THE CORNER AS PREVIOUSLY RESTORED OR REESTABLISHED AND (1) THE CORNER AS RESTORED OR REESTABLISHED, AND (2) TO AT LEAST 2 OF THE WITNESS MONUMENTS SHOWN ON THE DRAWING IN (D) ABOVE.

N/A

(F) WAS THE CORNER RESTORED THROUGH ACCEPTANCE OF (1) AN OBLITERATED EVIDENCE LOCATION, OR (2) A FOUND PERPETUATED LOCATION?

(2) A FOUND PERPETUATED LOCATION.

(G&H) WAS THE CORNER REESTABLISHED THROUGH LOST CORNER PROPORTIONATE METHODS? IF SO, SHOW THE METHOD, INCLUDING THE DIRECTIONS AND DISTANCES TO OTHER PUBLIC LAND SURVEY CORNERS USED AS EVIDENCE OR USED FOR PROPORTIONING IN DETERMINING THE CORNER LOCATION.

N/A

CORNER HISTORY

THIS CORNER WAS NOT ESTABLISHED BY THE ORIGINAL GOVERNMENT SURVEY.

IN A SURVEY DATED 18 DECEMBER 1850, GEORGE STUNTZ VISITED THE CORNER.

IN A TIE SHEET DATED 18 FEBRUARY 1991, MATTHEW JANIAK REPORTED FINDING A 1" IRON ROD AT THE CORNER.

BETWEEN 10 JANUARY 1991 AND 17 OCTOBER 2000, THIS CORNER HAS BEEN USED IN NUMEROUS SURVEYS WHEREBY A NO. 8 REBAR IS REPORTED AT THE CORNER.

IN A PLAT OF SURVEY DATED 3 JUNE 2006, LARRY AUSTIN REPORTED FINDING A NO. 10 REBAR AT THE CORNER.

IN A TIE SHEET DATED 25 JUNE 2008, LARRY AUSTIN REPORTED FINDING A NO. 8 REBAR AT THE CORNER.

SINCE 2 APRIL 2008, THIS CORNER HAS BEEN USED IN NUMEROUS SURVEYS WHEREBY A NO. 8 REBAR IS REPORTED AT THE CORNER.

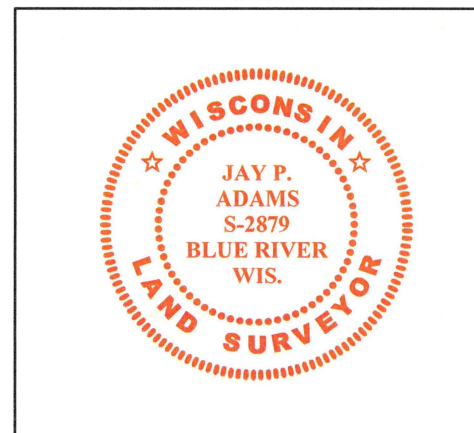
AFFIX LAND SURVEYOR SEAL

(I) I, JAY P. ADAMS, P.L.S. - 2879, CERTIFY THAT THE CORNER LOCATION SHOWN ON THIS RECORD WAS DETERMINED BY ME OR UNDER MY DIRECTION AND CONTROL AND THAT THIS U.S. PUBLIC LAND SURVEY MONUMENT RECORD IS CORRECT AND COMPLETE TO THE BEST OF MY KNOWLEDGE AND BELIEF.

19 FEBRUARY 2020

SIGNATURE

DATE



GRANT COUNTY U.S. PUBLIC LAND SURVEY MONUMENT RECORD

(A) IDENTIFY THE CORNER AS REFERENCED TO THE U.S. PUBLIC LAND SURVEY SYSTEM

● = CORNER MONUMENT RESTORED

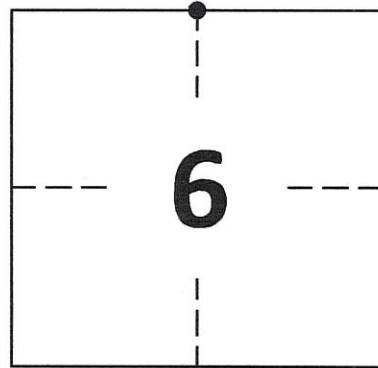
WITNESSES TO CORNER LOCATION:

DAN PETTIS
CALEB KOLANDER

GEOGRAPHIC COORDINATES
NAD 83 (2011) ADJUSTMENT

LATITUDE: 42°51'25.5323"
LONGITUDE: -90°39'19.9401"

WISCONSIN STATE PLANE SOUTH ZONE (US SF):
NORTHING: 313,079.249
EASTING: 1,792,728.615

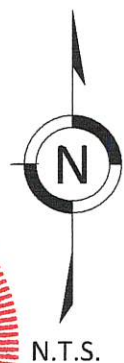
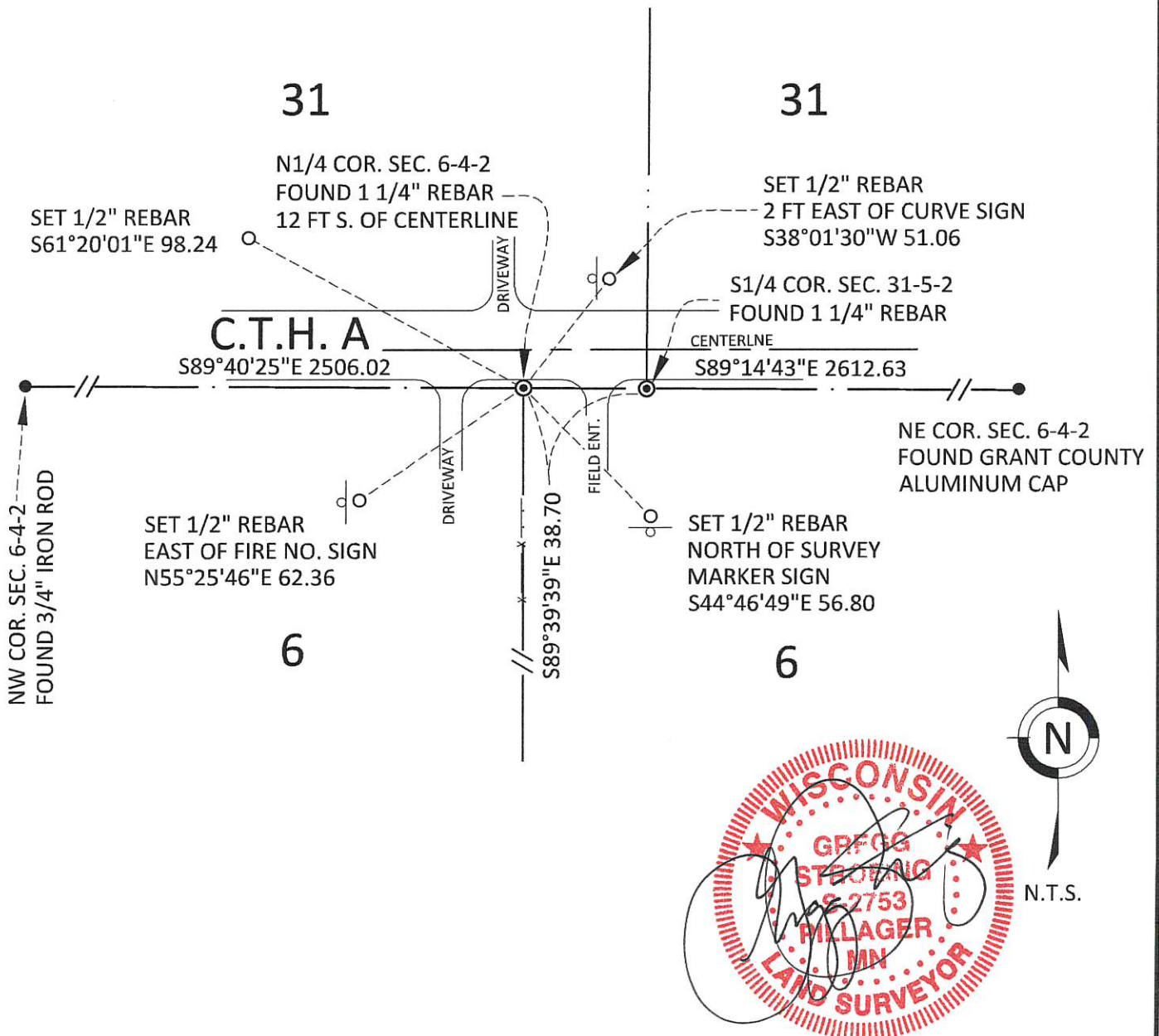
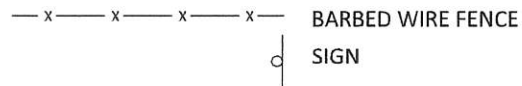


SECTION 6
TOWNSHIP 4 NORTH, RANGE 2 WEST
TOWN OF ELLENBORO

(B) DESCRIBE ANY RECORD EVIDENCE, MONUMENT EVIDENCE, OCCUPATIONAL EVIDENCE, TESTIMONIAL EVIDENCE OR ANY OTHER MATERIAL EVIDENCE YOU CONSIDERED, AND WHETHER THE MONUMENT WAS FOUND OR PLACED.
FOUND 1" IRON ROD SET BY HOMER D. RALPH.

(C) IN THE PLAN VIEW DRAWING BELOW, PROVIDE REFERENCE TIES TO AT LEAST 4 WITNESS MONUMENTS. WITNESS MONUMENTS SHALL BE MADE OF CONCRETE, NATURAL STONE, IRON, BEARING TREES OR ANY OTHER EQUALLY DURABLE MATERIAL. DEPICT THE RELEVANT MONUMENTS AND REFERENCE TIES WITH SUFFICIENT DETAIL TO ENABLE ACCURATE RELOCATION OF THE CORNER IF THE CORNER MONUMENT IS DISTURBED.

(D) LEGEND



**GRANT COUNTY
U.S. PUBLIC LAND SURVEY MONUMENT RECORD**

(E) DESCRIBE ANY MATERIAL DISCREPANCY BETWEEN THE LOCATION OF THE CORNER AS RESTORED OR REESTABLISHED AND THE LOCATION OF THAT CORNER AS PREVIOUSLY RESTORED OR REESTABLISHED BY DISTANCE AND DIRECTION. SHOW THE DISCREPANCY ON THE PLAN VIEW DRAWING UNDER (D), ABOVE. SHOW THE DISTANCES BETWEEN THE CORNER AS PREVIOUSLY RESTORED OR REESTABLISHED AND (1) THE CORNER AS RESTORED OR REESTABLISHED, AND (2) TO AT LEAST 2 OF THE WITNESS MONUMENTS SHOWN ON THE DRAWING IN (D) ABOVE.

N/A

(F) WAS THE CORNER RESTORED THROUGH ACCEPTANCE OF (1) AN OBLITERATED EVIDENCE LOCATION, OR (2) A FOUND PERPETUATED LOCATION?

FOUND AT PERPETUATED LOCATION

(G&H) WAS THE CORNER REESTABLISHED THROUGH LOST CORNER PROPORTIONATE METHODS? IF SO, SHOW THE METHOD, INCLUDING THE DIRECTIONS AND DISTANCES TO OTHER PUBLIC LAND SURVEY CORNERS USED AS EVIDENCE OR USED FOR PROPORTIONING IN DETERMINING THE CORNER LOCATION.

N/A

1. CORNER HISTORY: NOT SET ON ORIGINAL SURVEY
2. IN 1850, BOOK B, PAGE 236, GEORGE R. STUNTZ BEGAN A SURVEY AT THE 1/4 POST CORRECTED.
3. IN 1973, BOOK F, PAGE 73, HOMER D. RALPH, JR. INDICATES A + AT THIS CORNER. NO INDICATION OF MONUMENT TYPE OR SIZE.
4. IN 1977, BOOK G, PAGE 82, DAVID K. KROHN INDICATES THE SAME ON A PLAT OF SURVEY AND REFERENCES THE RALPH SURVEY.
5. IN 1991, BOOK P, PAGE 48, ON A RESURVEY OF THE HOMER SURVEY IN NO. 3 ABOVE, MATHEW J. JANIAC FOUND A 1" IRON ROD ON A PLAT OF SURVEY IN THE LOCATION OF THE HOMER SURVEY. HE THEN RECORDED A GOVERNMENT CORNER RECORD.
6. IN 1993, BOOK S, PAGE 127, FOUND A 1" IRON ROD AT THE N1/4 CORNER ON A PLAT OF SURVEY.
7. IN 1996, BOOK W, PAGE 52, LARRY L. AUSTIN FOUND A 1" IRON ROD ON A PLAT OF SURVEY.
8. IN 2006, BOOK 19, PAGE 57, LARRY L. AUSTIN FOUND A 1" IRON ROD 38.70 FEET WEST OF THE S1/4 CORNER OF SECTION 31-5-2.
9. IN 2008, BOOK 22, PAGE 80, LARRY L. AUSTIN FOUND A 1" REBAR ON A PLAT OF SURVEY.
10. IN 2008, BOOK 22, PAGE 80, LARRY L. AUSTIN FOUND A 1" REBAR ON A PLAT OF SURVEY.
11. IN 2008, BOOK 23, PAGE 1, LARRY L. AUSTIN FOUND A 1" REBAR ON A PLAT OF SURVEY
12. IN 2008, BOOK 23, PAGE 51, LARRY L. AUSTIN FOUND A 1" REBAR ON A PLAT OF SURVEY.
13. IN 2013, BOOK 34, PAGE 62, LARRY L. AUSTIN FOUND A 1" REBAR ON A PLAT OF SURVEY.
14. IN 2018, BOOK 41, PAGE 29 AND 68, AARON J. AUSTIN FOUND A 1" REBAR ON A PLAT OF SURVEY.
15. IN 2020 GREGG STROEING ACCEPTED THIS POSITION OF THE 1" IRON ROD SHOWN ON THE ABOVE SURVEYS. UPDATED AND SET NEW TIES AS SHOWN IN PART C

(I) I, GREGG STROEING P.L.S. - 2753, CERTIFY THAT THE CORNER LOCATION SHOWN ON THIS RECORD WAS DETERMINED BY ME OR UNDER MY DIRECTION AND CONTROL AND THAT THIS U.S. PUBLIC LAND SURVEY MONUMENT RECORD IS CORRECT AND COMPLETE TO THE BEST OF MY KNOWLEDGE AND BELIEF.

SIGNATURE

12/08/2020

DATE



CORNER NO. 12

MAR 26 1991

GOVERNMENT CORNER RECORD

N 1/4 CORNER, SECTION 6, TOWNSHIP 4 NORTH, RANGE 2 WEST,

TOWN, ~~CITY OF WILKES~~ OF ELLENBORO

TYPE OF MONUMENT: 1" DIA. IRON ROD FOUND ELEVATION - M.S.L. DATUM

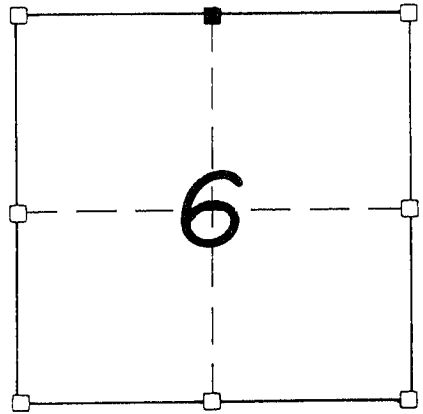
WITNESSES TO CORNER LOCATION

SEAN M. WALSH

PATRICK J. DEDERICH

SECTION 6, T 4 N, R. 2 W

TOWN OF ELLENBORO



■ - CORNER LOCATION

● - 3/4" X 24" IRON ROD SET

NORTH

TIE SKETCH (SHOW ALL HELPFUL FEATURES)

YARD OF TOWN OF ELLENBORO
E/S FIRE NO. SIGN

FIELD OF LIBERTY

C.T.H. "A"

W/S ROAD SIGN

42.04'

PAVED SURFACE

44.85'

TOWN OF ELLENBORO

FIELD

SOUTHERLY R.O.W. LINE

C.T.H. "A"

49.68'

43.82'

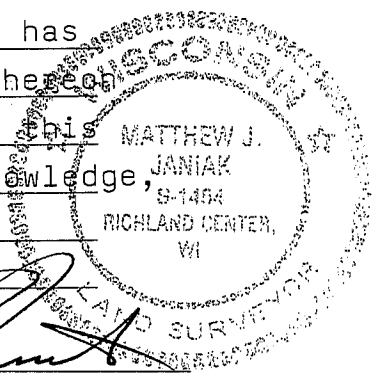
YARD

FIELD

SURVEYOR'S CERTIFICATE

SEAL S- 1454

I, Matthew J. Janiak, DO HEREBY CERTIFY THAT the above corner has
been accepted and perpetuated at the location shown hereon
as was previously marked by Homer D. Ralph, and that this
information is correct and true to the best of my knowledge,
information and belief.



DATED THIS 18th DAY OF FEBRUARY, 19 91

REGISTERED LAND SURVEYOR

