

Remon

42011

# GRANT COUNTY U.S. PUBLIC LAND SURVEY MONUMENT RECORD

INSTRUCTIONS: THIS RECORD SHALL SHOW THE LOCATION OF THE CORNER AND SHALL INCLUDE ALL OF THE FOLLOWING ELEMENTS (A THROUGH I).

(A) IDENTIFY THE CORNER AS REFERENCED TO THE U.S. PUBLIC LAND SURVEY SYSTEM

■ = CORNER MONUMENT RESTORED

WITNESSES TO CORNER LOCATION:

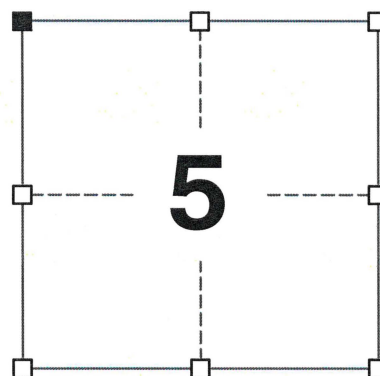
BRADLEY A. SCHROEDER  
JAMIE L. BRANDT

GEOGRAPHIC COORDINATES,  
NAD 83 (2011) ADJUSTMENT:

LATITUDE: 42° 51' 25.39406"  
LONGITUDE: 90° 38' 44.34327"

WISCONSIN COORDINATE REFERENCE SYSTEM (WISCRS),  
GRANT COUNTY, NAD 83 (2011) ADJUSTMENT:

NORTHING: 526,989.002  
EASTING: 836,388.868



SECTION 5  
TOWNSHIP 4 NORTH, RANGE 2 WEST  
TOWN OF ELLENBORO

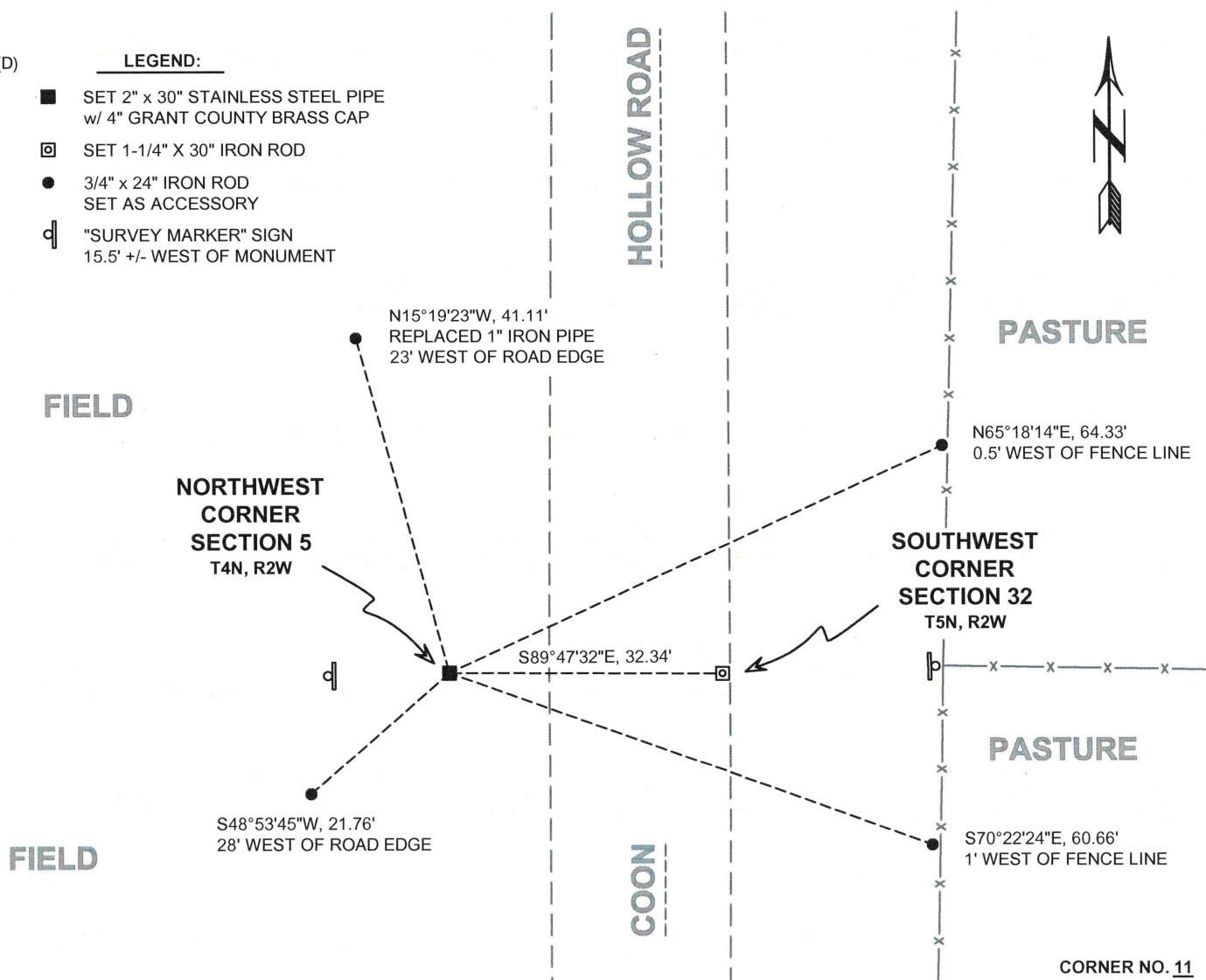
(B) DESCRIBE ANY RECORD EVIDENCE, MONUMENT EVIDENCE, OCCUPATIONAL EVIDENCE, TESTIMONIAL EVIDENCE OR ANY OTHER MATERIAL EVIDENCE YOU CONSIDERED, AND WHETHER THE MONUMENT WAS FOUND OR PLACED.

I COULD FIND NO MONUMENTS OR BEARING TREES FROM THE ORIGINAL GOVERNMENT SURVEY. I RECOVERED THE 3/4" X 24" IRON BAR SET BY LARRY AUSTIN. I ACCEPTED THIS LOCATION AS THE BEST AVAILABLE EVIDENCE OF THE ORIGINAL GOVERNMENT CORNER AND REMONUMENTED IT WITH A 2" x 30" STAINLESS STEEL PIPE WITH A 4" GRANT COUNTY BRASS CAP.

(C) IN THE PLAN VIEW DRAWING BELOW, PROVIDE REFERENCE TIES TO AT LEAST 4 WITNESS MONUMENTS. WITNESS MONUMENTS SHALL BE MADE OF CONCRETE, NATURAL STONE, IRON, BEARING TREES OR ANY OTHER EQUALLY DURABLE MATERIAL. DEPICT THE RELEVANT MONUMENTS AND REFERENCE TIES WITH SUFFICIENT DETAIL TO ENABLE ACCURATE RELOCATION OF THE CORNER IF THE CORNER MONUMENT IS DISTURBED.

(D) LEGEND:

- SET 2" x 30" STAINLESS STEEL PIPE w/ 4" GRANT COUNTY BRASS CAP
- SET 1-1/4" X 30" IRON ROD
- 3/4" x 24" IRON ROD SET AS ACCESSORY
- ⌋ "SURVEY MARKER" SIGN 15.5' +/- WEST OF MONUMENT



CORNER NO. 11

42011

(E) DESCRIBE ANY MATERIAL DISCREPANCY BETWEEN THE LOCATION OF THE CORNER AS RESTORED OR REESTABLISHED AND THE LOCATION OF THAT CORNER AS PREVIOUSLY RESTORED OR REESTABLISHED BY DISTANCE AND DIRECTION. SHOW THE DISCREPANCY ON THE PLAN VIEW DRAWING UNDER (D), ABOVE. SHOW THE DISTANCES BETWEEN THE CORNER AS PREVIOUSLY RESTORED OR REESTABLISHED AND (1) THE CORNER AS RESTORED OR REESTABLISHED, AND (2) TO AT LEAST 2 OF THE WITNESS MONUMENTS SHOWN ON THE DRAWING IN (D) ABOVE.

N/A

(F) WAS THE CORNER RESTORED THROUGH ACCEPTANCE OF (1) AN OBLITERATED EVIDENCE LOCATION, OR (2) A FOUND PERPETUATED LOCATION?

(2) A FOUND PERPETUATED LOCATION.

(G&H) WAS THE CORNER REESTABLISHED THROUGH LOST CORNER PROPORTIONATE METHODS? IF SO, SHOW THE METHOD, INCLUDING THE DIRECTIONS AND DISTANCES TO OTHER PUBLIC LAND SURVEY CORNERS USED AS EVIDENCE OR USED FOR PROPORTIONING IN DETERMINING THE CORNER LOCATION.

N/A

CORNER HISTORY

THE ORIGINAL GOVERNMENT CORNER WAS ESTABLISHED BY ROBERT CLARK JR. IN THE FIRST QUARTER OF 1833 WHERE HE SET A POST 49 LINKS WEST OF THE SOUTHWEST CORNER OF SECTION 32, T5N, R2W.

IN A CERTIFIED SURVEY MAP DATED 16 JANUARY 1981, LAURENCE SCHMIT REPORTED MEASURING TO THE CORNER WITH NO MENTION OF A MONUMENT AT THE CORNER.

IN A PLAT OF SURVEY DATED 30 MAY 1995, LARRY AUSTIN REPORTED SETTING A 3/4" X 24" IRON BAR AT THE CORNER.

IN A TIE SHEET DATED 6 DECEMBER 1995, LARRY AUSTIN REPORTED FINDING A 3/4" IRON BAR AT THE CORNER.

IN A TIE SHEET DATED 6 JANUARY 1996, LARRY AUSTIN REPORTED SETTING A 3/4" IRON BAR AT THE CORNER.

IN A CERTIFIED SURVEY MAP DATED 7 MARCH 2000, LARRY AUSTIN REPORTED FINDING A NO. 6 REBAR AT THE CORNER.

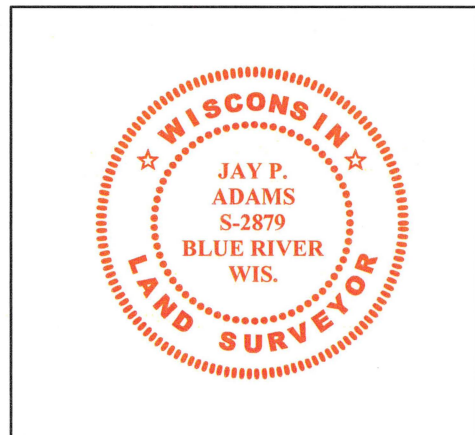
AFFIX LAND SURVEYOR SEAL

(I) I, JAY P. ADAMS, P.L.S. - 2879, CERTIFY THAT THE CORNER LOCATION SHOWN ON THIS RECORD WAS DETERMINED BY ME OR UNDER MY DIRECTION AND CONTROL AND THAT THIS U.S. PUBLIC LAND SURVEY MONUMENT RECORD IS CORRECT AND COMPLETE TO THE BEST OF MY KNOWLEDGE AND BELIEF.

19 FEBRUARY 2020

SIGNATURE

DATE

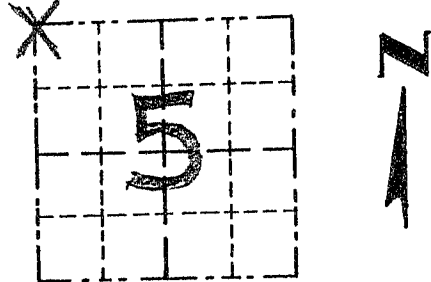


# GRANT COUNTY

## Survey Monument Record

TYPE OF MONUMENT 3/4" x 24" IRON BAR  
 STATE PLANE COORDINATES: N \_\_\_\_\_  
 E \_\_\_\_\_  
 ELEVATION — M.S.L. DATUM: \_\_\_\_\_  
 THETA ANGLE: \_\_\_\_\_  
 FIELD BOOK: 95-05  
 PAGE 24

CORNER NO. 11  
 SECTION 5  
 TOWN 4 N  
 RANGE 2 W  
NW COR



LOCATION  
 (Indicated by "X")

SEAL:



### BASIS FOR MONUMENT LOCATION

(Use reverse side if necessary)

Show info such as: History of corner, with reference to Vol. and pg., dates, surveyor; exact description of monument replaced; if location computed, by taped or EDM traverse; landowner, remarks, etc.

CORNER WAS SET ON THE SOUTH LINE OF SECTION 31, T5N, R2W AT THE RECORDED CLOSING CORNER DISTANCE FROM THE SE CORNER OF SECTION 31: CSM #166 (1981) SHOWS A DISTANCE TO THE CORNER, BUT DOESN'T INDICATE ANY MONUMENT OR CLOSING CORNER DISTANCE. VERIFIED BY EDM TRAVERSE OF THE AREA.

CERTIFIED CORRECT

*Larry L. Austin*  
 Registered Land Surveyor  
 DATE: 1/6/96

### TIE SKETCH

Show at least three (3) ties and monument

#### LEGEND

- ⊕ 3/4" IRON BAR SET
- 1" x 12" IRON PIPE SET
- X—X— EXISTING FENCE
- ▲ RR. SPIKE

