

REMON

42010

GRANT COUNTY U.S. PUBLIC LAND SURVEY MONUMENT RECORD

INSTRUCTIONS: THIS RECORD SHALL SHOW THE LOCATION OF THE CORNER AND SHALL INCLUDE ALL OF THE FOLLOWING ELEMENTS (A THROUGH I).

(A) IDENTIFY THE CORNER AS REFERENCED TO THE U.S. PUBLIC LAND SURVEY SYSTEM

■ = CORNER MONUMENT RESTORED

WITNESSES TO CORNER LOCATION:

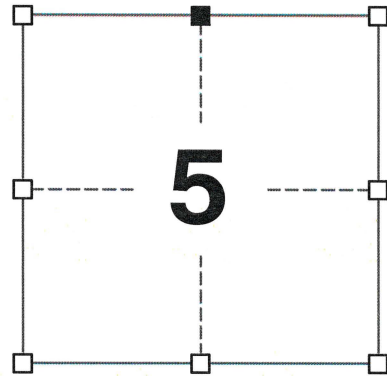
BRADLEY A. SCHROEDER
JAMIE L. BRANDT

GEOGRAPHIC COORDINATES,
NAD 83 (2011) ADJUSTMENT:

LATITUDE: 42° 51' 25.33711"
LONGITUDE: 90° 38' 08.59628"

WISCONSIN COORDINATE REFERENCE SYSTEM (WISCRS),
GRANT COUNTY, NAD 83 (2011) ADJUSTMENT:

NORTHING: 526,988.272
EASTING: 839,051.544



SECTION 5
TOWNSHIP 4 NORTH, RANGE 2 WEST
TOWN OF ELLENBORO

(B) DESCRIBE ANY RECORD EVIDENCE, MONUMENT EVIDENCE, OCCUPATIONAL EVIDENCE, TESTIMONIAL EVIDENCE OR ANY OTHER MATERIAL EVIDENCE YOU CONSIDERED, AND WHETHER THE MONUMENT WAS FOUND OR PLACED.

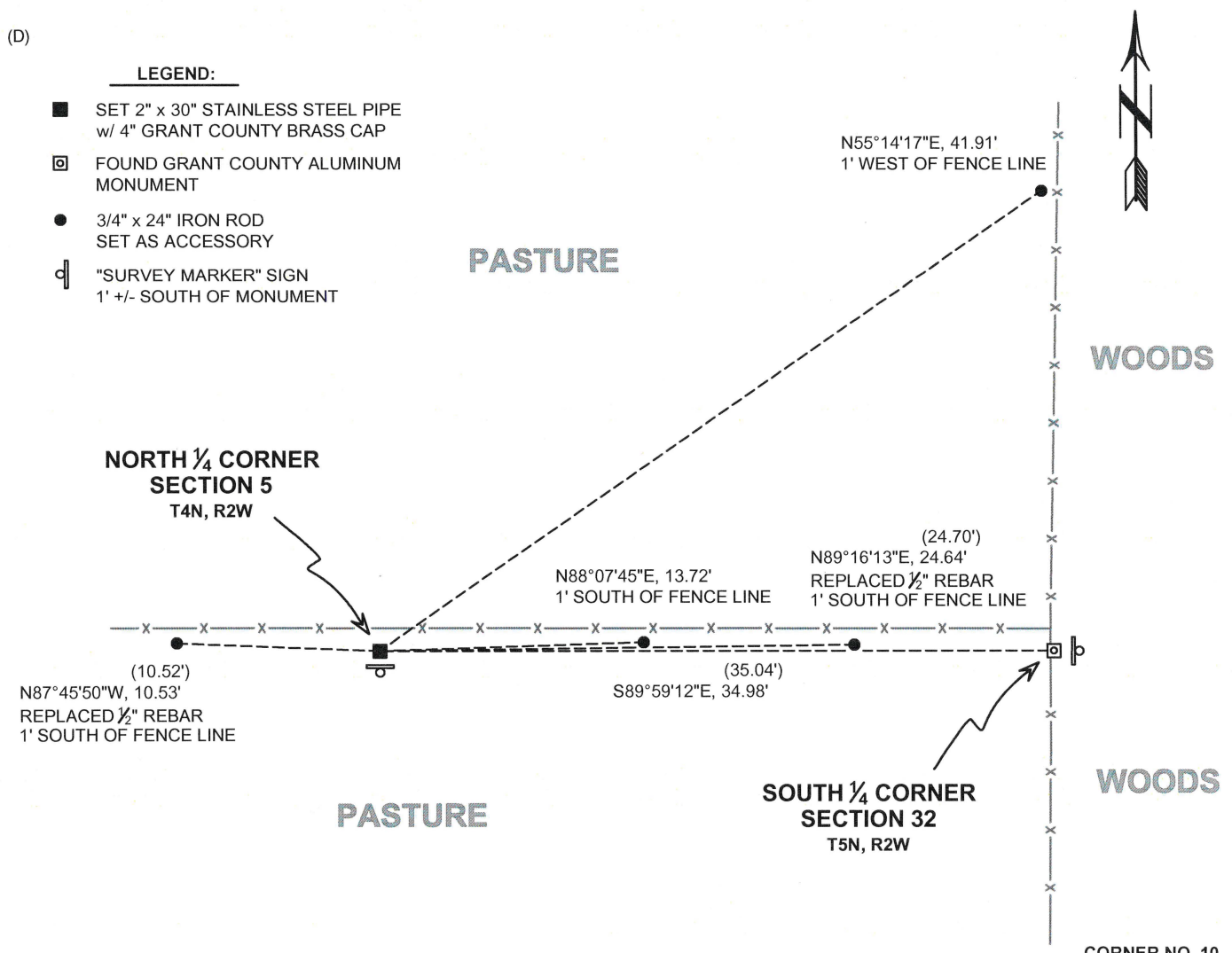
I RECOVERED THE GRANT COUNTY ALUMINUM MONUMENT REPORTED BY LARRY AUSTIN. I ACCEPTED THIS LOCATION AS THE BEST AVAILABLE EVIDENCE OF THE CORNER AND REMONUMENTED IT WITH A 2" x 30" STAINLESS STEEL PIPE WITH A 4" GRANT COUNTY BRASS CAP.

(C) IN THE PLAN VIEW DRAWING BELOW, PROVIDE REFERENCE TIES TO AT LEAST 4 WITNESS MONUMENTS. WITNESS MONUMENTS SHALL BE MADE OF CONCRETE, NATURAL STONE, IRON, BEARING TREES OR ANY OTHER EQUALLY DURABLE MATERIAL. DEPICT THE RELEVANT MONUMENTS AND REFERENCE TIES WITH SUFFICIENT DETAIL TO ENABLE ACCURATE RELOCATION OF THE CORNER IF THE CORNER MONUMENT IS DISTURBED.

(D)

LEGEND:

- SET 2" x 30" STAINLESS STEEL PIPE w/ 4" GRANT COUNTY BRASS CAP
- FOUND GRANT COUNTY ALUMINUM MONUMENT
- 3/4" x 24" IRON ROD SET AS ACCESSORY
- ⊥ "SURVEY MARKER" SIGN 1' +/- SOUTH OF MONUMENT



42010

(E) DESCRIBE ANY MATERIAL DISCREPANCY BETWEEN THE LOCATION OF THE CORNER AS RESTORED OR REESTABLISHED AND THE LOCATION OF THAT CORNER AS PREVIOUSLY RESTORED OR REESTABLISHED BY DISTANCE AND DIRECTION. SHOW THE DISCREPANCY ON THE PLAN VIEW DRAWING UNDER (D), ABOVE. SHOW THE DISTANCES BETWEEN THE CORNER AS PREVIOUSLY RESTORED OR REESTABLISHED AND (1) THE CORNER AS RESTORED OR REESTABLISHED, AND (2) TO AT LEAST 2 OF THE WITNESS MONUMENTS SHOWN ON THE DRAWING IN (D) ABOVE.

N/A

(F) WAS THE CORNER RESTORED THROUGH ACCEPTANCE OF (1) AN OBLITERATED EVIDENCE LOCATION, OR (2) A FOUND PERPETUATED LOCATION?

(2) A FOUND PERPETUATED LOCATION.

(G&H) WAS THE CORNER REESTABLISHED THROUGH LOST CORNER PROPORTIONATE METHODS? IF SO, SHOW THE METHOD, INCLUDING THE DIRECTIONS AND DISTANCES TO OTHER PUBLIC LAND SURVEY CORNERS USED AS EVIDENCE OR USED FOR PROPORTIONING IN DETERMINING THE CORNER LOCATION.

N/A

CORNER HISTORY

THIS CORNER WAS NOT ESTABLISHED BY THE ORIGINAL GOVERNMENT SURVEY.

IN A PLAT OF SURVEY DATED 30 MAY 1995, LARRY AUSTIN REPORTED FINDING A GRANT COUNTY ALUMINUM MONUMENT AT THE CORNER.

IN PLATS OF SURVEY DATED 3 NOVEMBER 1995, LARRY AUSTIN REPORTED FINDING A GRANT COUNTY ALUMINUM MONUMENT AT THE CORNER.

IN A TIE SHEET DATED 5 DECEMBER 1995, LARRY AUSTIN REPORTED SETTING A GRANT COUNTY ALUMINUM MONUMENT AT THE CORNER.

SINCE 1995, A GRANT COUNTY ALUMINUM MONUMENT HAS BEEN REPORTED AT THE CORNER IN MANY AREA SURVEYS.

AFFIX LAND SURVEYOR SEAL

(I) I, JAY P. ADAMS, P.L.S. - 2879, CERTIFY THAT THE CORNER LOCATION SHOWN ON THIS RECORD WAS DETERMINED BY ME OR UNDER MY DIRECTION AND CONTROL AND THAT THIS U.S. PUBLIC LAND SURVEY MONUMENT RECORD IS CORRECT AND COMPLETE TO THE BEST OF MY KNOWLEDGE AND BELIEF.

19 FEBRUARY 2020

SIGNATURE

DATE



GRANT COUNTY U.S. PUBLIC LAND SURVEY MONUMENT RECORD

(A) IDENTIFY THE CORNER AS REFERENCED TO THE U.S. PUBLIC LAND SURVEY SYSTEM

● = CORNER MONUMENT RESTORED

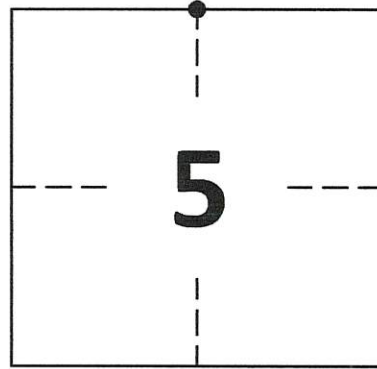
WITNESSES TO CORNER LOCATION:

DAN PETTIS
CALEB KOLANDER

GEOGRAPHIC COORDINATES
NAD 83 (2011) ADJUSTMENT

LATITUDE: 42°51'25.3373"
LONGITUDE: -90°38'08.5975"

WISCONSIN STATE PLANE SOUTH ZONE (US SF):
NORTHING: 313,015.373
EASTING: 1,798,042.054



SECTION 5
TOWNSHIP 4 NORTH, RANGE 2 WEST
TOWN OF ELLENBORO

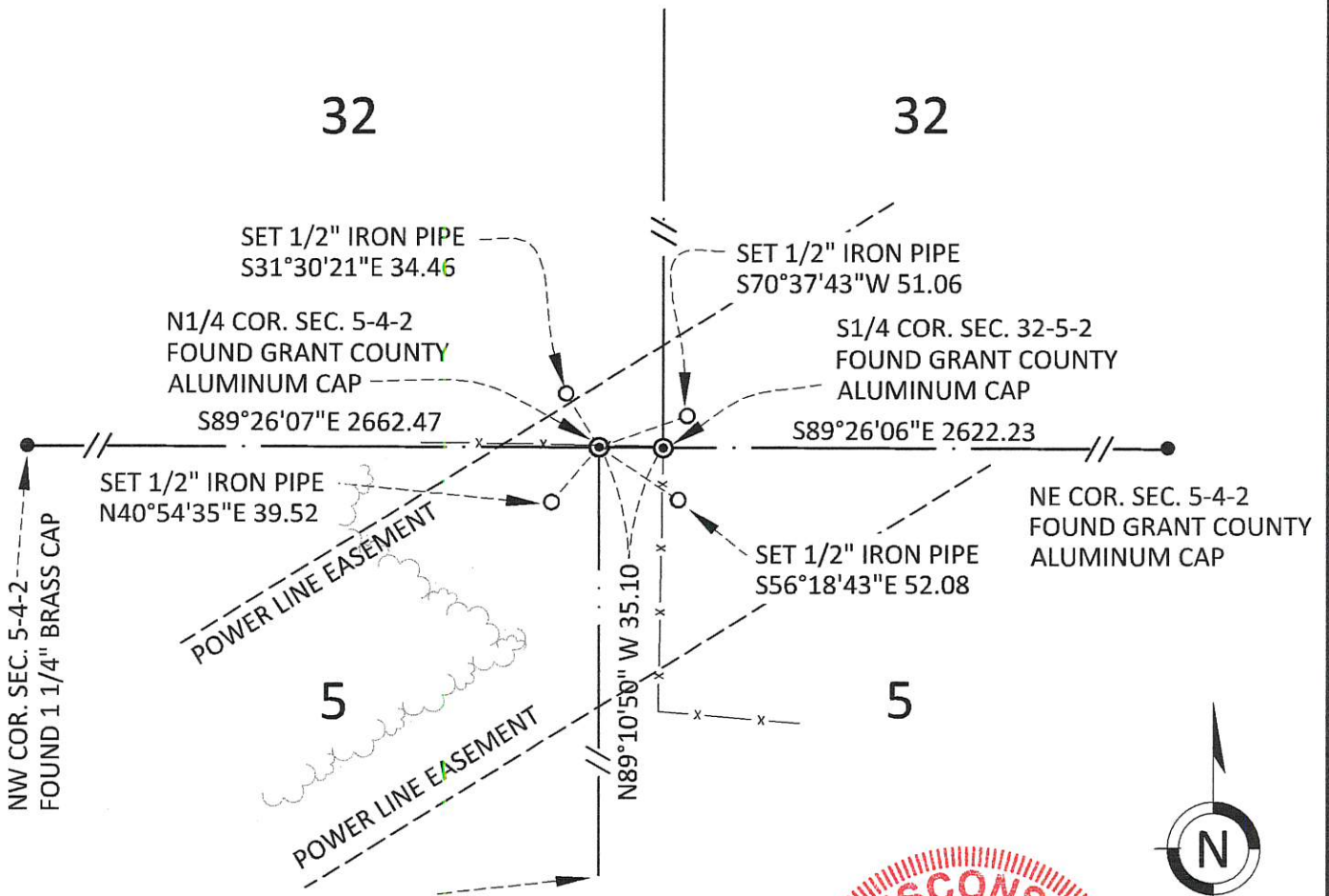
(B) DESCRIBE ANY RECORD EVIDENCE, MONUMENT EVIDENCE, OCCUPATIONAL EVIDENCE, TESTIMONIAL EVIDENCE OR ANY OTHER MATERIAL EVIDENCE YOU CONSIDERED, AND WHETHER THE MONUMENT WAS FOUND OR PLACED.

FOUND GRANT COUNTY ALUMINUM MONUMENT SET BY LARRY L. AUSTIN 1995.

(C) IN THE PLAN VIEW DRAWING BELOW, PROVIDE REFERENCE TIES TO AT LEAST 4 WITNESS MONUMENTS. WITNESS MONUMENTS SHALL BE MADE OF CONCRETE, NATURAL STONE, IRON, BEARING TREES OR ANY OTHER EQUALLY DURABLE MATERIAL. DEPICT THE RELEVANT MONUMENTS AND REFERENCE TIES WITH SUFFICIENT DETAIL TO ENABLE ACCURATE RELOCATION OF THE CORNER IF THE CORNER MONUMENT IS DISTURBED.

(D) LEGEND

— x — x — x — x — BARBED WIRE FENCE



**GRANT COUNTY
U.S. PUBLIC LAND SURVEY MONUMENT RECORD**

(E) DESCRIBE ANY MATERIAL DISCREPANCY BETWEEN THE LOCATION OF THE CORNER AS RESTORED OR REESTABLISHED AND THE LOCATION OF THAT CORNER AS PREVIOUSLY RESTORED OR REESTABLISHED BY DISTANCE AND DIRECTION. SHOW THE DISCREPANCY ON THE PLAN VIEW DRAWING UNDER (D), ABOVE. SHOW THE DISTANCES BETWEEN THE CORNER AS PREVIOUSLY RESTORED OR REESTABLISHED AND (1) THE CORNER AS RESTORED OR REESTABLISHED, AND (2) TO AT LEAST 2 OF THE WITNESS MONUMENTS SHOWN ON THE DRAWING IN (D) ABOVE.

N/A

(F) WAS THE CORNER RESTORED THROUGH ACCEPTANCE OF (1) AN OBLITERATED EVIDENCE LOCATION, OR (2) A FOUND PERPETUATED LOCATION?

FOUND AT PERPETUATED LOCATION

(G&H) WAS THE CORNER REESTABLISHED THROUGH LOST CORNER PROPORTIONATE METHODS? IF SO, SHOW THE METHOD, INCLUDING THE DIRECTIONS AND DISTANCES TO OTHER PUBLIC LAND SURVEY CORNERS USED AS EVIDENCE OR USED FOR PROPORTIONING IN DETERMINING THE CORNER LOCATION.

N/A

1. CORNER HISTORY: NOT SET ON ORIGINAL SURVEY
2. IN 1995, BOOK W, PAGE 84, LARRY L. AUSTIN SET A GRANT COUNTY MONUMENT ON A PLAT OF SURVEY AND RECORDED A SURVEY MONUMENT RECORD.
3. IN 1995, BOOK W, PAGE 8, 9 AND 10 LARRY L. AUSTIN FOUND A GRANT COUNTY MONUMENT ON PLATS OF SURVEY.
4. IN 2003, BOOK 13, PAGE 83 AND PAGE 100, LARRY L. AUSTIN LOCATED A GRANT COUNTY MONUMENT ON PLATS OF SURVEY.
5. IN 2000, AARON J. AUSTIN FOUND A GRANT COUNTY MONUMENT INDICATED ON C.S.M. 612
6. IN 2010, BOOK 27, PAGE 21 AND PAGE 90, LARRY L. AUSTIN LOCATED A GRANT COUNTY MONUMENT ON PLATS OF SURVEY.
7. IN 2018, BOOK 42, PAGE 60, AARON J. AUSTIN LOCATED A GRANT COUNTY MONUMENT ON A PLAT OF SURVEY
8. IN 2020 GREGG STROEING ACCEPTED THIS POSITION OF THE GRANT COUNTY MONUMENT SET BY LARRY L. AUSTIN IN 1995. UPDATED AND SET NEW TIES AS SHOWN IN PART C

(I) I, GREGG STROEING P.L.S. - 2753, CERTIFY THAT THE CORNER LOCATION SHOWN ON THIS RECORD WAS DETERMINED BY ME OR UNDER MY DIRECTION AND CONTROL AND THAT THIS U.S. PUBLIC LAND SURVEY MONUMENT RECORD IS CORRECT AND COMPLETE TO THE BEST OF MY KNOWLEDGE AND BELIEF.

SIGNATURE

12/08/2020

DATE



CORNER NO. 10

U.S. PUBLIC LAND SURVEY MONUMENT RECORD - GRANT COUNTY, WI

Section 5, Town 4 North Range 2 West, Town of Ellenboro (a)

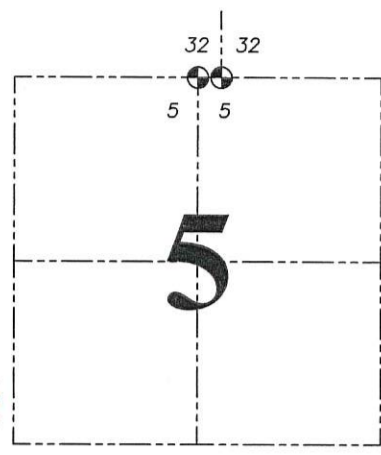
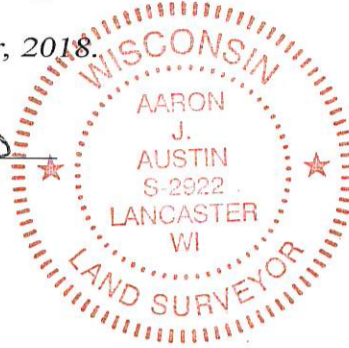
NOTE: This form is intended and designed to fulfill all requirements of the Wisconsin Administrative Code Chapter A-E 7.08, U.S. Public Land Survey Monument Record (3) (a) (b) (c) (d) (e) (f) (g) (h) (i).

CERTIFICATE: (i)

I, Aaron J. Austin, Wisconsin Professional Land Surveyor, do hereby certify that the corner location on this record was determined by me and/or under my direct supervision and that this U.S. Public Land Survey Monument Record is correct and complete to the best of my knowledge and belief.

Dated this 26th day of September, 2018.

Aaron J. Austin
Aaron J. Austin, S-2922



● = CORNER LOCATION

Grant County Coordinates:
NAD 83 (2011)
Northing: 526,988.10
Easting: 839,051.48

HISTORY OF CORNER ESTABLISHMENT:

Larry Austin set an Aluminum Monument at the corner and prepared a Survey Monument Record dated 12-5-1995.

DESCRIPTION OF CORNER EVIDENCE FOUND: (b) (f) (g) (h)

I found the Aluminum Monument and one witness corner as set by Larry Austin. I set three additional witness corners after I verified the monument's location with with G.P.S. and E.D.M. methods.

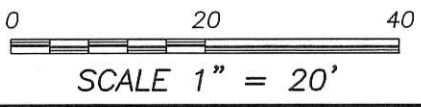
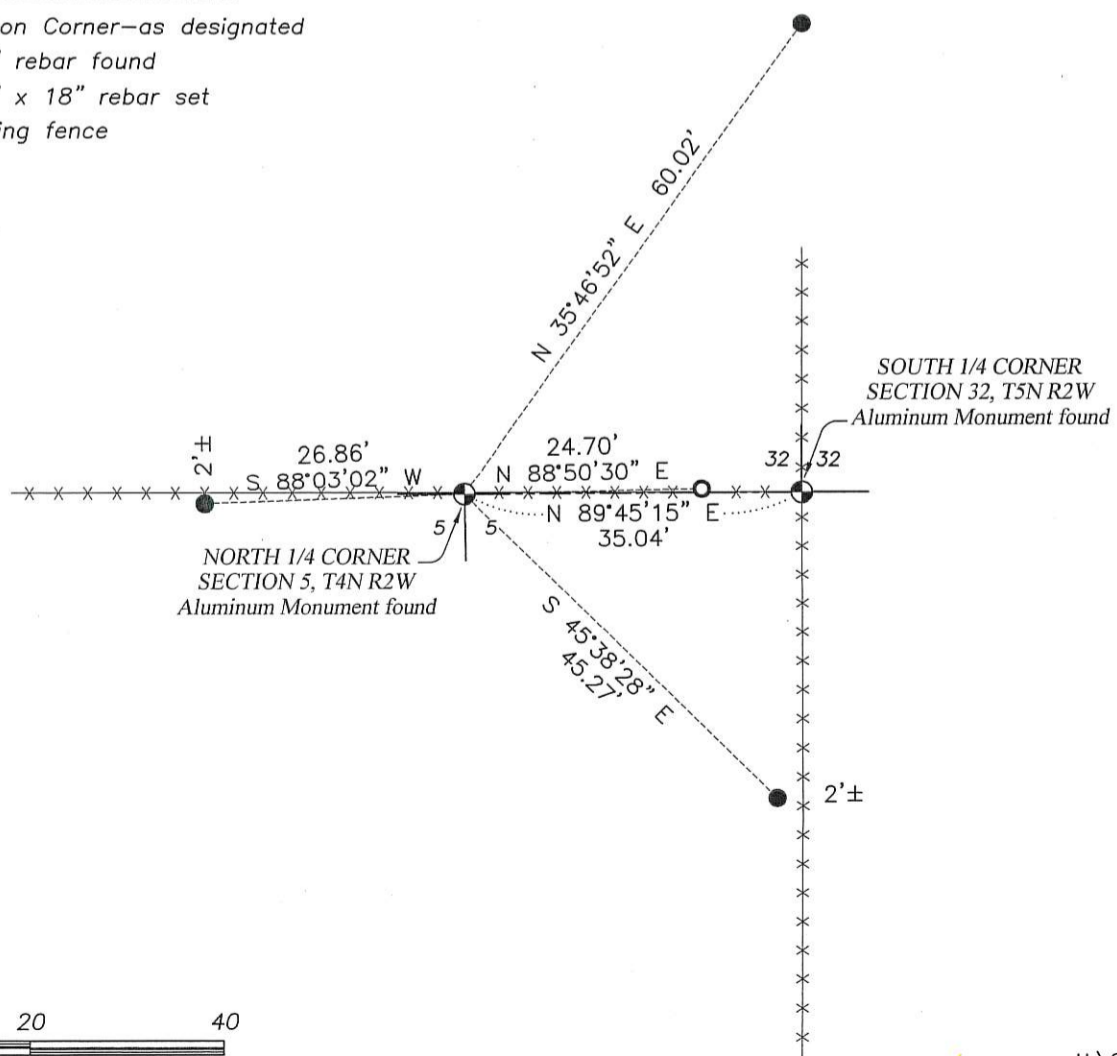
DESCRIPTION OF CORNER AND WITNESS MONUMENTS, references and accessories used to perpetuate the original or re-established location of this corner. (c) (d) (e)

Witnesses to corner location Shane Austin, Owen Austin.

SKETCH:

LEGEND

- Section Corner—as designated
- 1/2" rebar found
- 3/4" x 18" rebar set
- x-x- Existing fence



U.S. PUBLIC LAND SURVEY MONUMENT RECORD - GRANT COUNTY, WI

Section 5, Town 4 North Range 2 West, Town of Ellenboro (a)

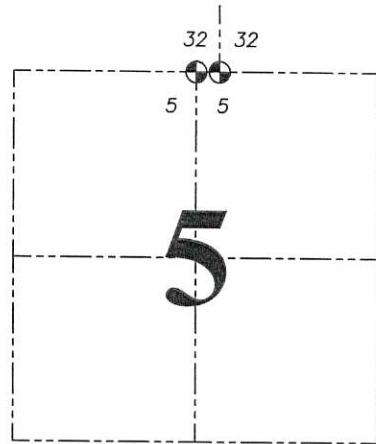
NOTE: This form is intended and designed to fulfill all requirements of the Wisconsin Administrative Code Chapter A-E 7.08, U.S. Public Land Survey Monument Record (3) (a) (b) (c) (d) (e) (f) (g) (h) (i).

CERTIFICATE: (i)

I, Aaron J. Austin, Wisconsin Professional Land Surveyor, do hereby certify that the corner location on this record was determined by me and/or under my direct supervision and that this U.S. Public Land Survey Monument Record is correct and complete to the best of my knowledge and belief.

Dated this 26th day of September, 2018.

Aaron J. Austin
 Aaron J. Austin, S-2922



⊕ = CORNER LOCATION

Grant County Coordinates:
 NAD 83 (2011)
 Northing: 526,988.10
 Easting: 839,051.48

HISTORY OF CORNER ESTABLISHMENT:

Larry Austin set an Aluminum Monument at the corner and prepared a Survey Monument Record dated 12-5-1995.

DESCRIPTION OF CORNER EVIDENCE FOUND: (b) (f) (g) (h)

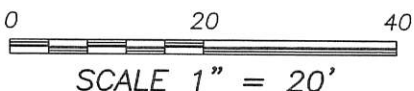
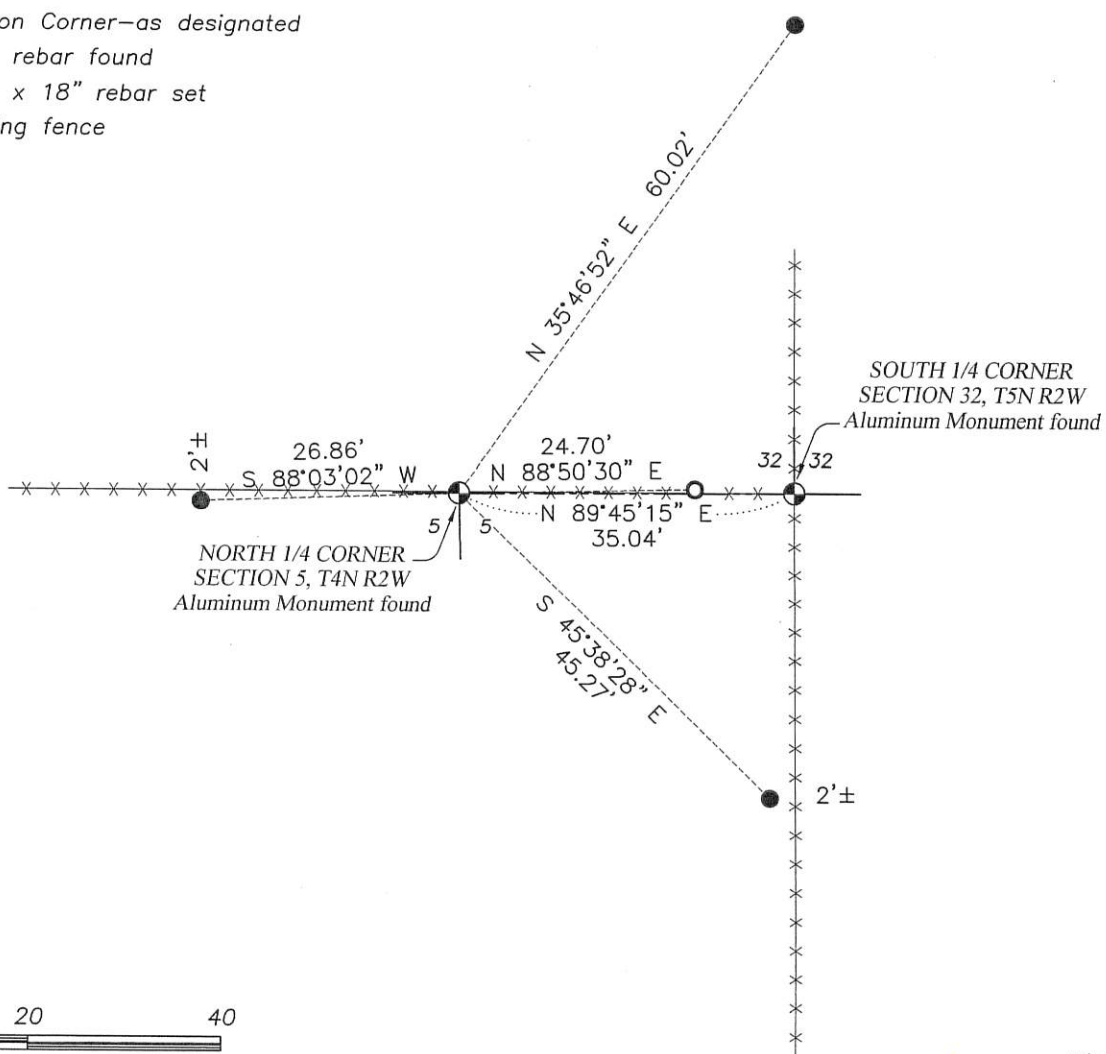
I found the Aluminum Monument and one witness corner as set by Larry Austin. I set three additional witness corners after I verified the monument's location with with G.P.S. and E.D.M. methods.

DESCRIPTION OF CORNER AND WITNESS MONUMENTS: references and accessories used to perpetuate the original or re-established location of this corner. (c) (d) (e)
 Witnesses to corner location Shane Austin, Owen Austin.

SKETCH:

LEGEND

- ⊕ Section Corner—as designated
- 1/2" rebar found
- 3/4" x 18" rebar set
- x-x- Existing fence



GRANT COUNTY

Survey Monument Record

TYPE OF MONUMENT COUNTY ALUMINUM MON.

STATE PLANE COORDINATES: N _____
E _____

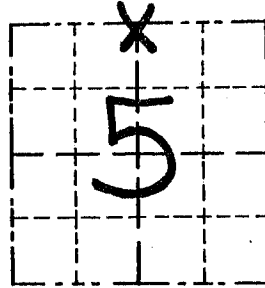
ELEVATION — M.S.L. DATUM: _____

THETA ANGLE: _____

FIELD BOOK: _____

PAGE _____

CORNER NO. 10
SECTION 5
TOWN 4 N
RANGE 2 W



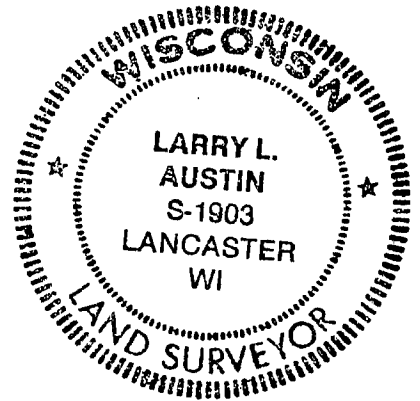
LOCATION
(Indicated by "X")

BASIS FOR MONUMENT LOCATION

(Use reverse side if necessary)

CORNER WAS SET
IN EAST-WEST FENCE-
LINE FOR NORTH-
SOUTH LOCATION AND
WESTERLY OF THE SOUTH 1/4
COR. OF SEC. 32 (T5N, R2W)
AT THE AVERAGES OF
THE JOGS AT THE NE COR
+ NW COR OF SEC. 5 (T4N -
R2W) AND VERIFIED BY EDM
TRAVERSE OF THE AREA

SEAL:



CERTIFIED CORRECT

Larry L. Austin
Registered Land Surveyor

DATE: 12/5/95

TIE SKETCH

Show at least three (3) ties and monument

LEGEND

- ⊙ GRANT COUNTY ALUMINUM MONUMENT
- 1/4" REBAR
- x-x EXISTING FENCE

