

GRANT COUNTY

PAID MAR 13 1996

Survey Monument Record

TYPE OF MONUMENT COUNTY MONUMENT

STATE PLANE COORDINATES: N _____
E _____

ELEVATION — M.S.L. DATUM: _____

THETA ANGLE: _____

FIELD BOOK: _____

PAGE _____

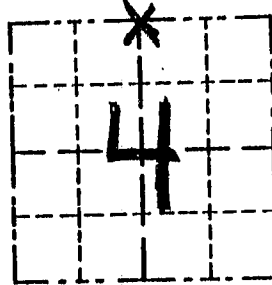
CORNER NO. 8

SECTION 4

TOWN 4N

RANGE 2W

N 1/4 COR



LOCATION
(Indicated by "X")

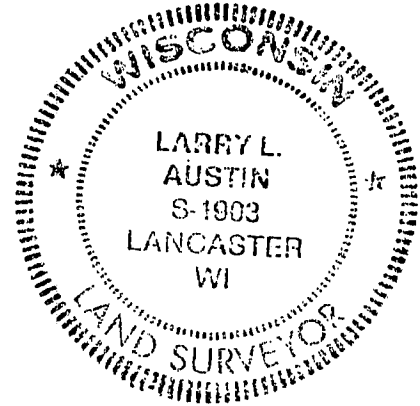
BASIS FOR MONUMENT LOCATION

(Use reverse side if necessary)

Show info such as: History of corner, with reference to Vol. and pg., dates, surveyor; exact description of monument replaced; if location computed, by taped or EDM traverse; landowner, remarks, etc.

SEAL:

NW & NE CORNERS ORIGINALLY SET BY ROBERT CLARK IN 1833; NO RECORD OF THIS CORNER SINCE ORIGINAL SURVEYS; I SET THIS CORNER AT AN OCCUPIED LOCATION & VERIFIED BY EDM TRAVERSE.



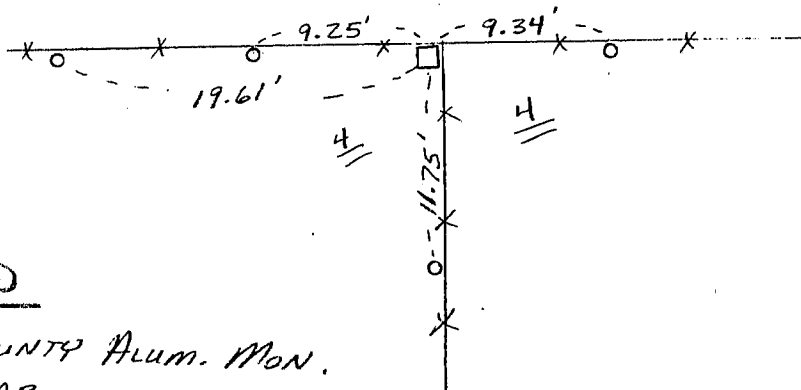
CERTIFIED CORRECT

Larry L. Austin
Registered Land Surveyor

DATE: 2/16/95

TIE SKETCH

Show at least three (3) ties and monument



LEGEND

- GRANT COUNTY Alum. Mon.
- 1/2" REBAR
- X—X— EXISTING FENCE

N
↑
NO SCALE