

# GRANT COUNTY CERTIFIED LAND CORNER

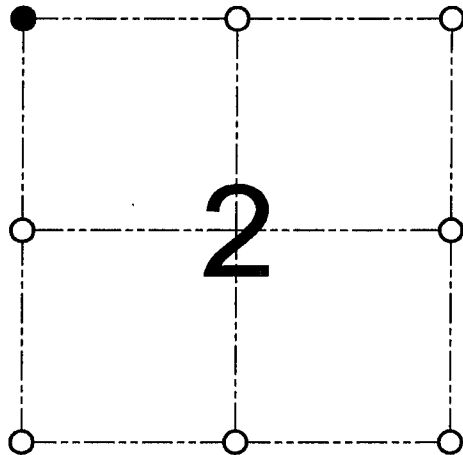
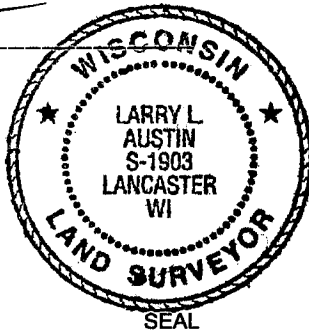
CORNER NUMBER 05

**CERTIFICATE:**

I, Larry L. Austin, do hereby certify that on the 8th day of August, 2000, I found evidence of the Northwest corner of Section 2, Town 4 North, Range 2 West, of the 4th Principal Meridian, and I re-established said corner according to the Wisconsin statutes as shown and described hereon.

Dated this 3rd day of November, 2000

*Larry L. Austin*  
Larry L Austin S-1903



● = CORNER LOCATION  
NORTHWEST CORNER OF SECTION 2, T 4 N R 2 W TOWN OF ELLENBORO

**HISTORY OF ORIGINAL CORNER ESTABLISHMENT:**

Corner was set in 1833 by Robert Clark. In 1988 I set a Grant County Aluminum monument at this location.

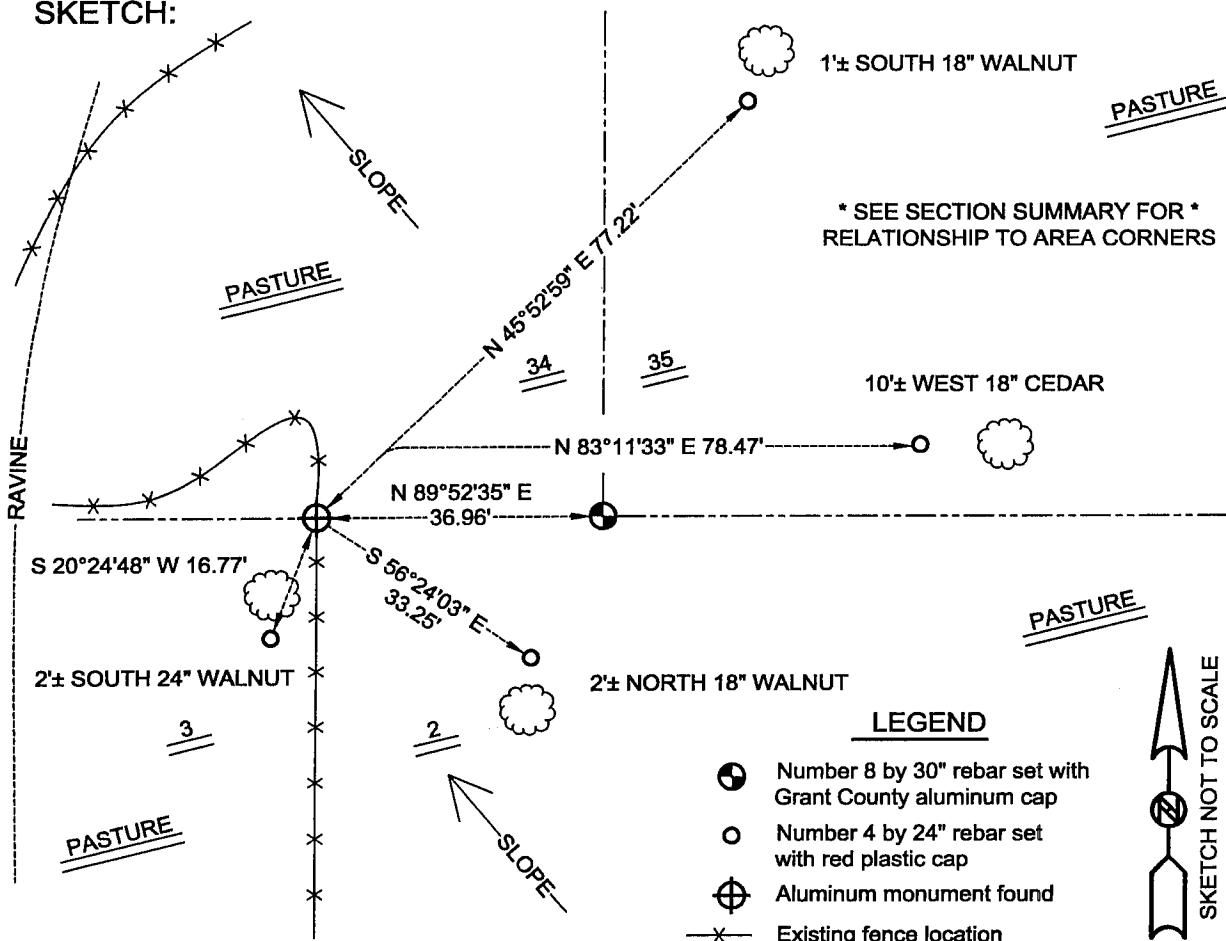
**DESCRIPTION OF CORNER EVIDENCE FOUND:**

I found the existing Grant County Aluminum monument and accepted it's location after an EDM & GPS traverse of the area.

**DESCRIPTION OF CORNER AND WITNESS MONUMENTS, references and accessories used to perpetuate the original or re-established location of this corner**

WITNESS TO THE CORNER LOCATION: SHELBY BLINDERT & JERRY SPEILMAN

**SKETCH:**



**LEGEND**

- ⊕ Number 8 by 30" rebar set with Grant County aluminum cap
- Number 4 by 24" rebar set with red plastic cap
- ⊕ Aluminum monument found
- x- Existing fence location

