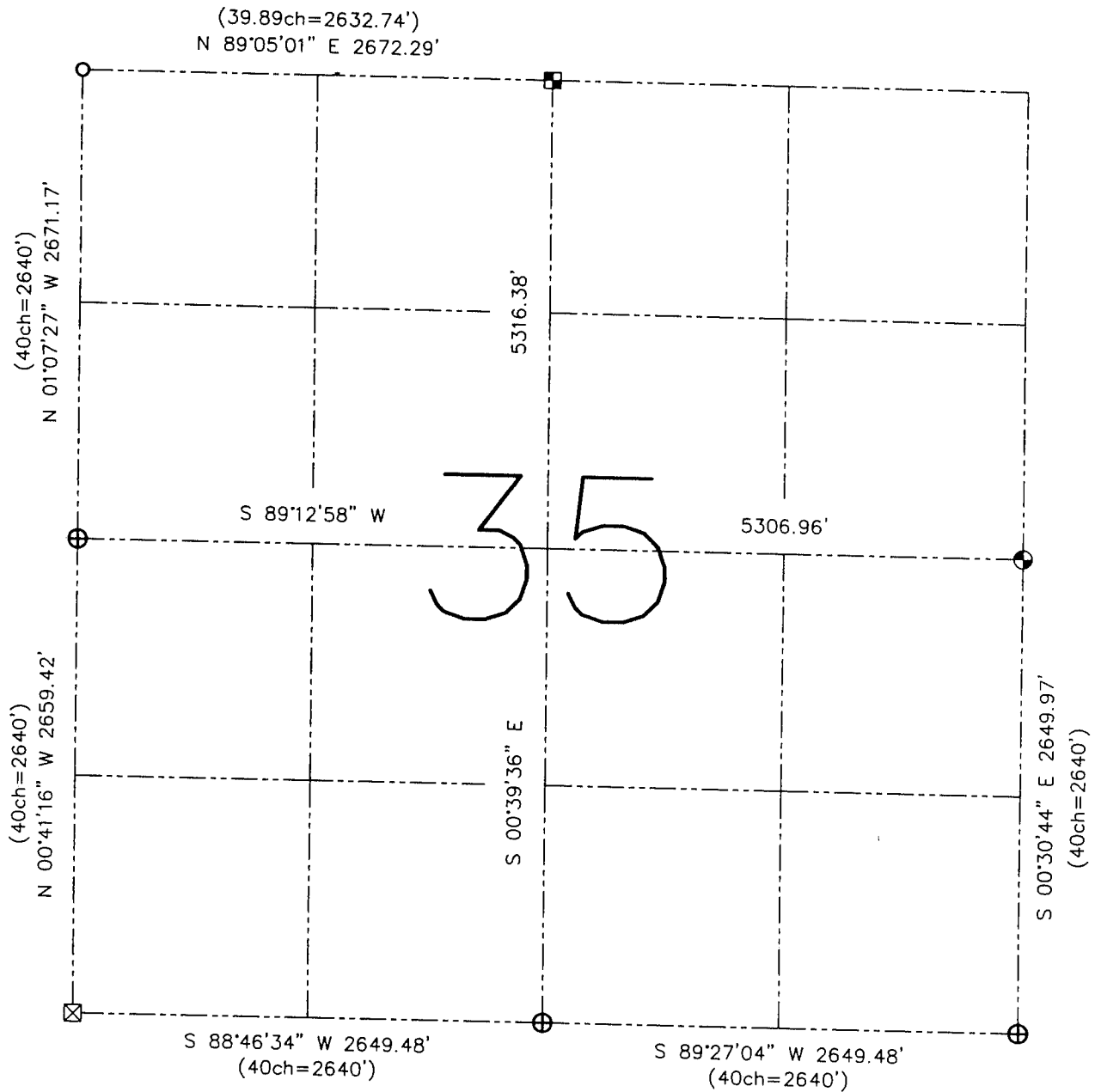


**U.S. PUBLIC LAND SURVEY MONUMENT RECORD – GRANT COUNTY, WI**

**Summary of Section 35, Town 4 North, Range 1 West, Town of Lima**



**LEGEND**

- ⊕ No. 8 rebar found with Grant County Aluminum Cap
- ⊙ No. 8 x 30" rebar set with Grant County Aluminum Cap – wt=2.67#/l.f.
- No. 6 rebar found
- ⊠ Aluminum Monument found with Grant County Aluminum Cap
- ⊞ Stone monument found
- ( ) Recorded as
- x— Approximate location of existing fence

Relationship of all section corners to other section corners shall be shown hereon by bearing and distance or grid coordinates, bearing reference shown below

Dated this 16th day of September, 2002

*Larry L. Austin*  
Larry L. Austin S-1903



Bearings referenced to the East-West Quarter line of this Section, which is assumed to bear S 89°12'58" W.

SKETCH NOT TO SCALE

**AUSTIN ENGINEERING, LLC**

4211 HWY 81 EAST, LANCASTER, WI 53813  
PHONE 608-723-6363 FAX 608-723-6702

FIELDBOOK: SDR33, 2038

G:\T3NR1W\01

C:\SWA\TIE\T4NR1W\35SUM

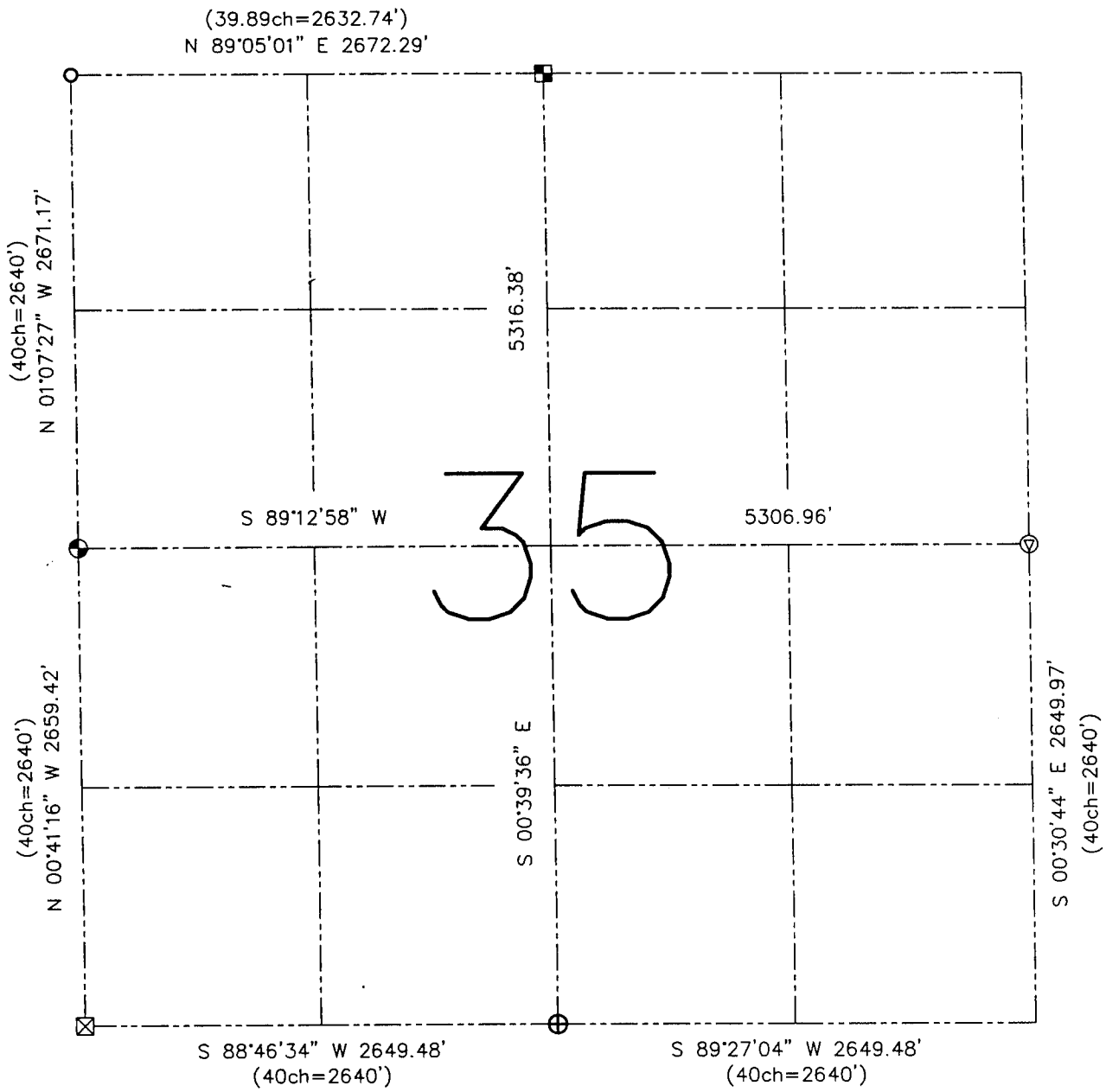
CREW: BS-SB-SA-BD

DRAWN BY: SW AUSTIN

APPROVED: LL AUSTIN

**U.S. PUBLIC LAND SURVEY MONUMENT RECORD – GRANT COUNTY, WI**

**Summary of Section 35, Town 4 North, Range 1 West, Town of Lima**



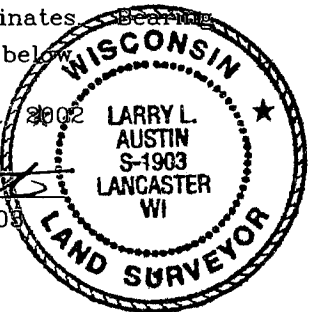
**LEGEND**

- ⊕ No. 8 rebar found with Grant County Aluminum Cap
- ⊙ No. 8 x 30" rebar set with Grant County Aluminum Cap – wt=2.67#/l.f.
- No. 6 rebar found
- ⊠ Aluminum Monument found with Grant County Aluminum Cap
- ⊖ Railroad spike found
- ⊞ Stone monument found
- ( ) Recorded as
- x— Approximate location of existing fence

Relationship of all section corners to other section corners shall be shown hereon by bearing and distance or grid coordinates. Bearing reference shown below.

Dated this 2nd day of August, 2002

*Larry L. Austin*  
Larry L. Austin S-1903



Bearings referenced to the East-West Quarter line of this Section, which is assumed to bear S 89°12'58" W.

SKETCH NOT TO SCALE