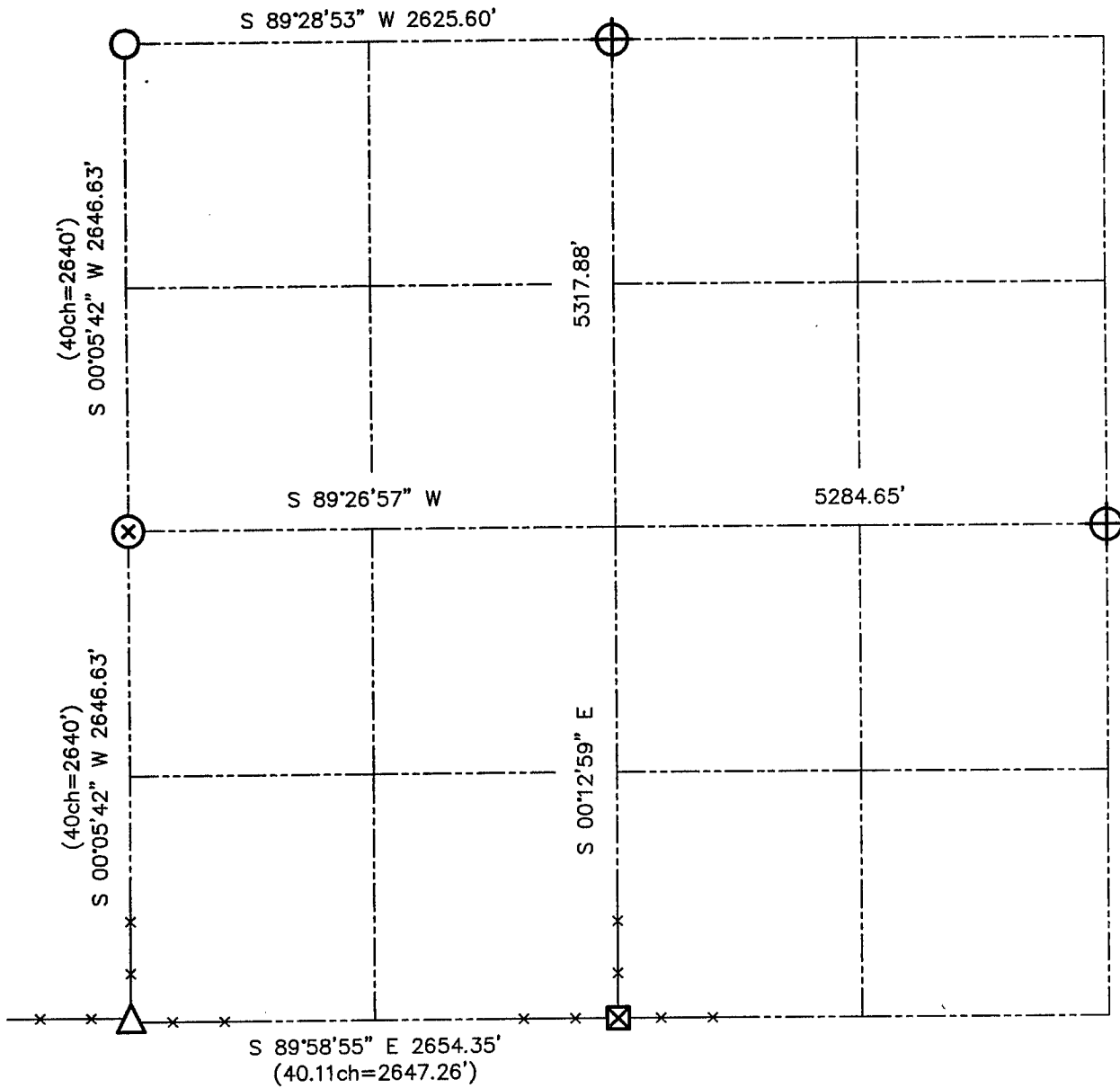


U.S. PUBLIC LAND SURVEY MONUMENT RECORD - GRANT COUNTY, WI

Summary of Section 22, Town 4 North Range 1 West, Town of Lima



LEGEND

- NUMBER 8 x 30" REBAR SET WITH GRANT COUNTY ALUMINUM CAP
- NUMBER 8 REBAR FOUND WITH GRANT COUNTY ALUMINUM CAP
- PIPE POST IN CONCRETE FOUND
- 2 1/2" x 2 1/2" ANGLE IRON POST FOUND
- NO MONUMENT SET! SEE TIESHEET FOR REFERENCE MONUMENT
- NUMBER 6 IRON BAR FOUND
- RECORDED AS



Relationship of all section corners to other section corners shall be shown hereon by bearing and distance or grid coordinates. Bearing reference shown below.

Dated this 1st day of August 2001

WISCONSIN

LARRY L. AUSTIN
LANCASTER
WI

Larry L. Austin S-1903

Bearings referenced to the East-West 1/4 line of Section 22, which is assumed to bear S 89°26'57" W.

SKETCH NOT TO SCALE

AUSTIN ENGINEERING, LLC

4211 HWY 81 EAST, LANCASTER, WI 53813
PHONE 608-723-6363 FAX 608-723-6702

FIELDBOOK: SDR33
G: \T4NR1W\16
C: \SWA\TIE\T4NR1W\22SUM

CREW: BS-SB-SA-TF
DRAWN BY: SW AUSTIN
APPROVED: LL AUSTIN