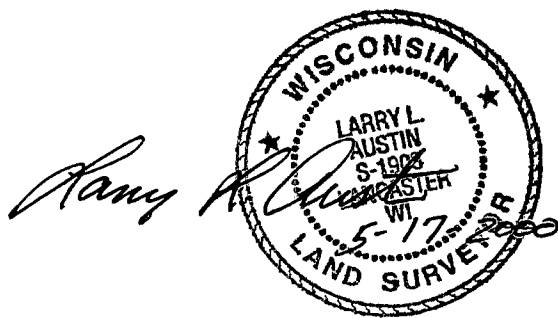
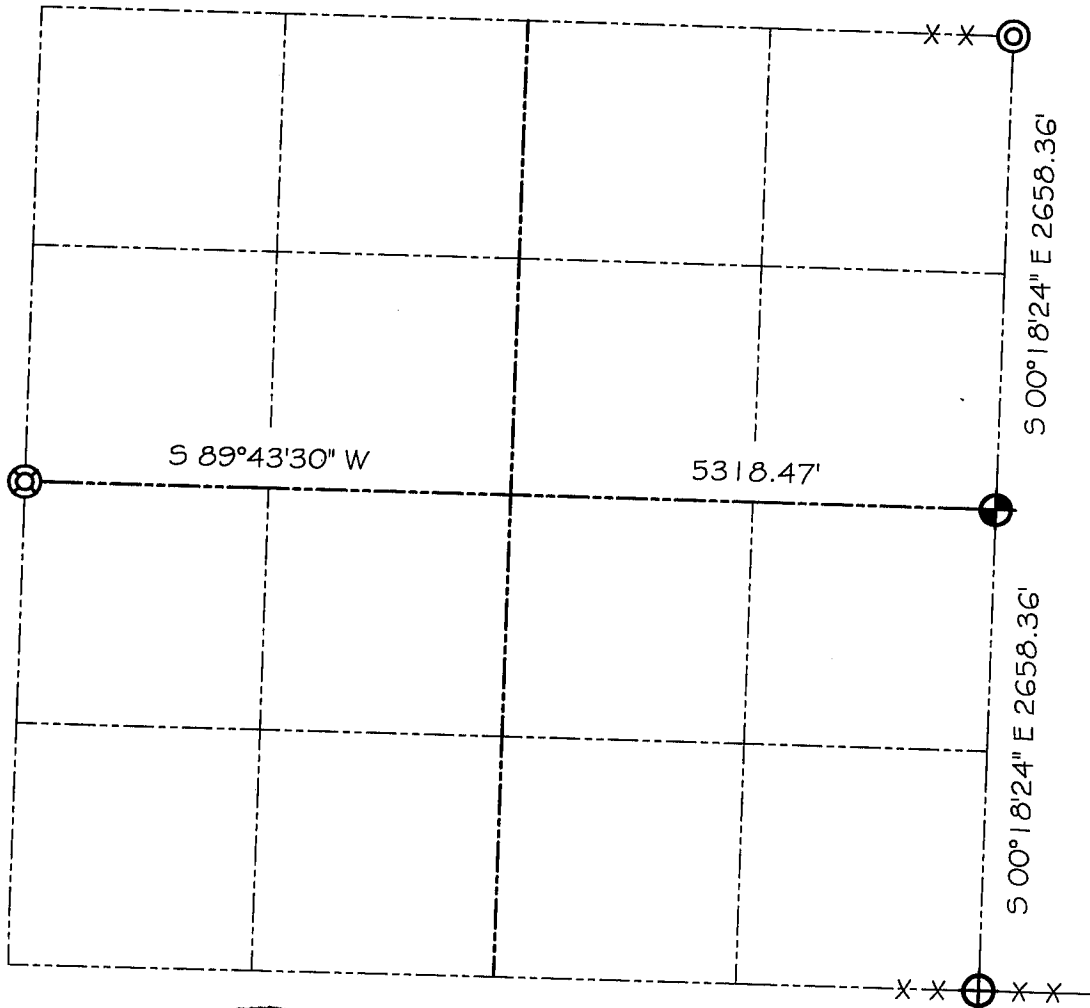


GRANT COUNTY

SECTION SUMMARY

$\frac{8}{\text{SECTION}} - \frac{4N}{\text{TOWN}} - \frac{1W}{\text{RANGE}}$



LEGEND

- NO. 8 X 30" REBAR SET WITH GRANT COUNTY ALUMINUM CAP
- NO. 8 X 30" REBAR FOUND WITH GRANT COUNTY ALUMINUM CAP
- CAST ALUMINUM MONUMENT FOUND
- P.K. NAIL FOUND $\text{¢} \text{¢}$

NOTE:

Relationships of all section corners to other section corners shall be shown hereon by bearing and distance or grid coordinates
Show or describe bearing reference



Bearings referenced to the East-West Quarter line of Section 8, which is assumed to bear S 89°43'30" W.