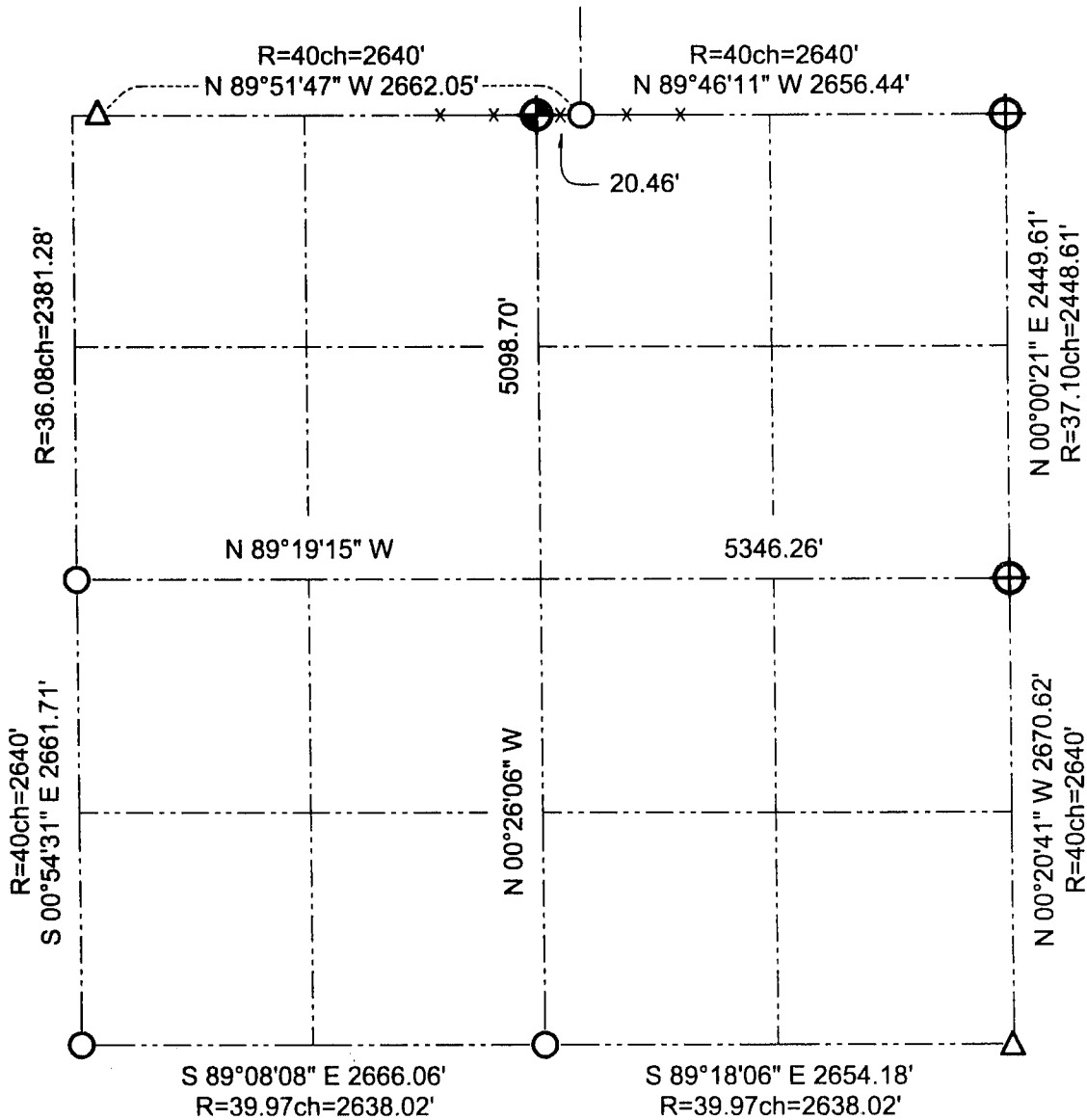


GRANT COUNTY SECTION SUMMARY

$\frac{1}{\text{SECTION}}$ - $\frac{4N}{\text{TOWN}}$ - $\frac{1W}{\text{RANGE}}$



LEGEND

- Number 8 x 30" rebar set with Grant County Aluminum Cap
- Number 10 iron bar found
- Number 6 iron bar found
- Railroad spike found

NOTE:
Relationships of all section corners to other section corners shall be shown hereon by bearing and distance or grid coordinates.
~Bearing reference below~



Bearings referenced to the East line of the Northeast Quarter of Section 1, which is assumed to bear N 00°00'21" E.

AUSTIN ENGINEERING, LLC
4211 HWY 81 E, LANCASTER, WI 53813
PHONE 608-723-6363 FAX 608-723-6702

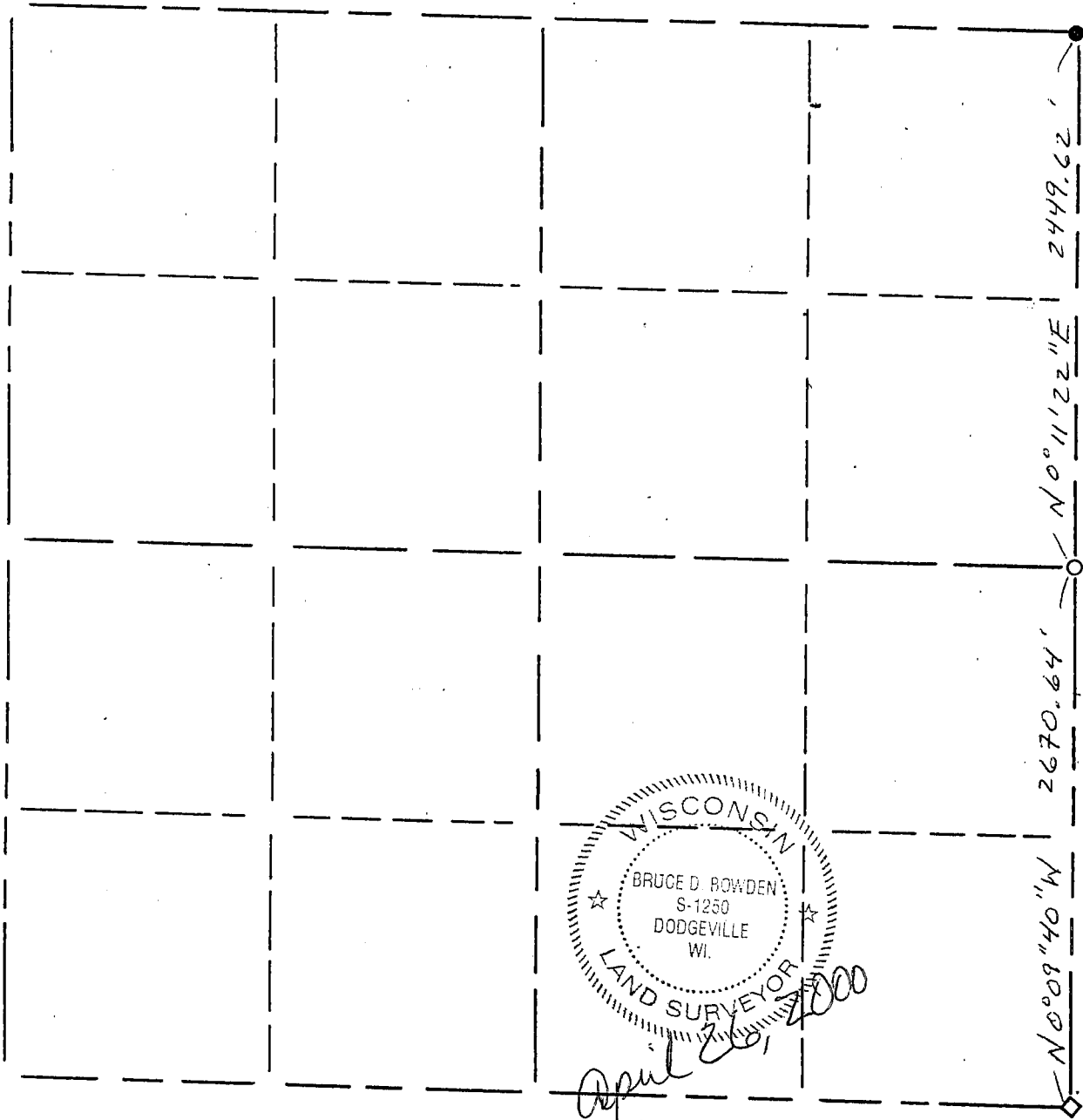
FIELDBOOK: SDR33 2038
G:\T5NR1W\36B
C:\SC14\SWA\TIE\T4NR1W\01SUM

DRAWN BY: SW AUSTIN
APPROVED: LL AUSTIN
CREW: BS - SB - SA - TF

GRANT COUNTY

Section Summary

$\frac{1}{SECTION} - \frac{T4N}{TOWN} - \frac{R1W}{RANGE}$



WISCONSIN
 BRUCE D. BOWDEN
 S-1250
 DODGEVILLE
 WI.
 LAND SURVEYOR
 April 2001

LEGEND

- △ COUNTY MONUMENT
- STONE OR CONCRETE MONUMENT
- - OTHER (specify) #10(1 1/4" dia.) x 30" rebar - Set.
- - #10(1 1/4" dia.) rebar - Rd.
- ◇ - Railroad spike - Set.

NOTE:

Relationships of all section corners to other section corners shall be shown hereon by bearing and distance or grid coordinates

Show or describe bearing reference

Bearings are referenced to Grid North of the Grant County Coordinate System as defined by the W.D.O.T. and determined by GPS observation.