

U.S. PUBLIC LAND SURVEY MONUMENT RECORD - GRANT COUNTY, WI

Section 31, Town 4 North Range 1 West, Town of Lima (a)

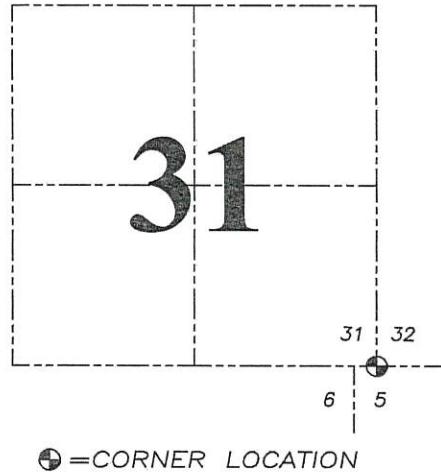
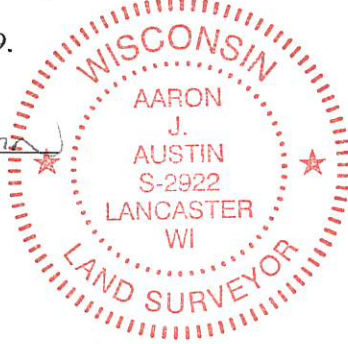
NOTE: This form is intended and designed to fulfill all requirements of the Wisconsin Administrative Code Chapter A-E 7.08, U.S. Public Land Survey Monument Record (3) (a) (b) (c) (d) (e) (f) (g) (h) (i).

CERTIFICATE: (i)

I, Aaron J. Austin, Wisconsin Professional Land Surveyor, do hereby certify that the corner location on this record was determined by me and/or under my direct supervision and that this U.S. Public Land Survey Monument Record is correct and complete to the best of my knowledge and belief.

Dated this 10th day of June, 2019.

Aaron J. Austin
Aaron J. Austin, S-2922



Grant County Coordinates:
NAD 83 (2011)
Northing: 495,037.40
Easting: 868,783.39

HISTORY OF CORNER ESTABLISHMENT:

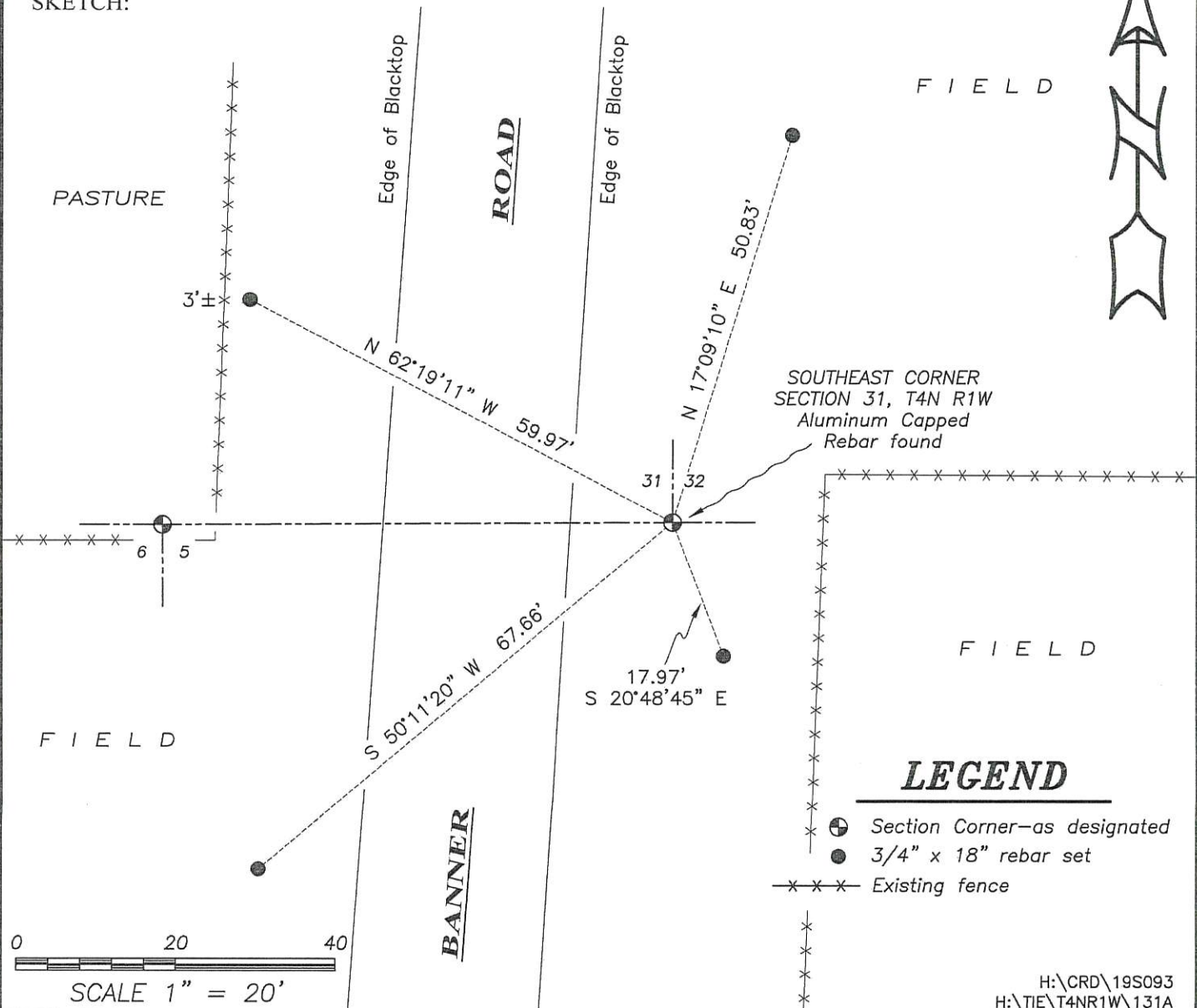
Original corner was set in 1832 by Sibley.
Larry Austin set a 1" rebar with a Grant County Aluminum Cap and prepared a Survey Monument Record dated 2/3/2000.

DESCRIPTION OF CORNER EVIDENCE FOUND: (b) (f) (g) (h)

I found the Monument set by Larry. I set four new witness corners after I verified the Monument's location with G.P.S. and E.D.M. methods.

DESCRIPTION OF CORNER AND WITNESS MONUMENTS, references and accessories used to perpetuate the original or re-established location of this corner. (c) (d) (e)
Witnesses to corner location Shane Austin, Owen Austin.
Drawn by: Owen Austin

SKETCH:



MAR 24 2000

GRANT COUNTY CERTIFIED LAND CORNER

CERTIFICATE:

I, Larry L. Austin, do hereby certify that on the 14th day of July, 1999, I found no evidence of the Southeast corner of Section 31, Town 4 North, Range 1 West, of the Fourth Principal Meridian, and I re-established said corner according to the Wisconsin Statutes as shown and described hereon.

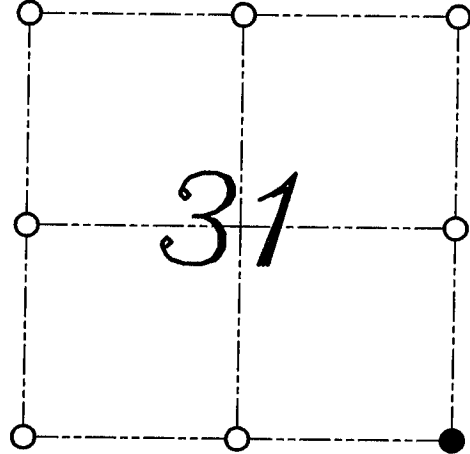
DATED THIS 3rd DAY OF FEBRUARY, 2000

Larry L. Austin
Larry L. Austin S-1903



SEAL

CORNER NUMBER 131



● = CORNER LOCATION

SOUTHEAST CORNER OF
SECTION 31, T 4 N R 1 W
TOWN OF LIMA

HISTORY OF ORIGINAL CORNER ESTABLISHMENT:

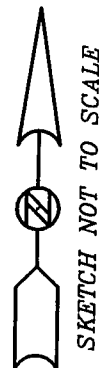
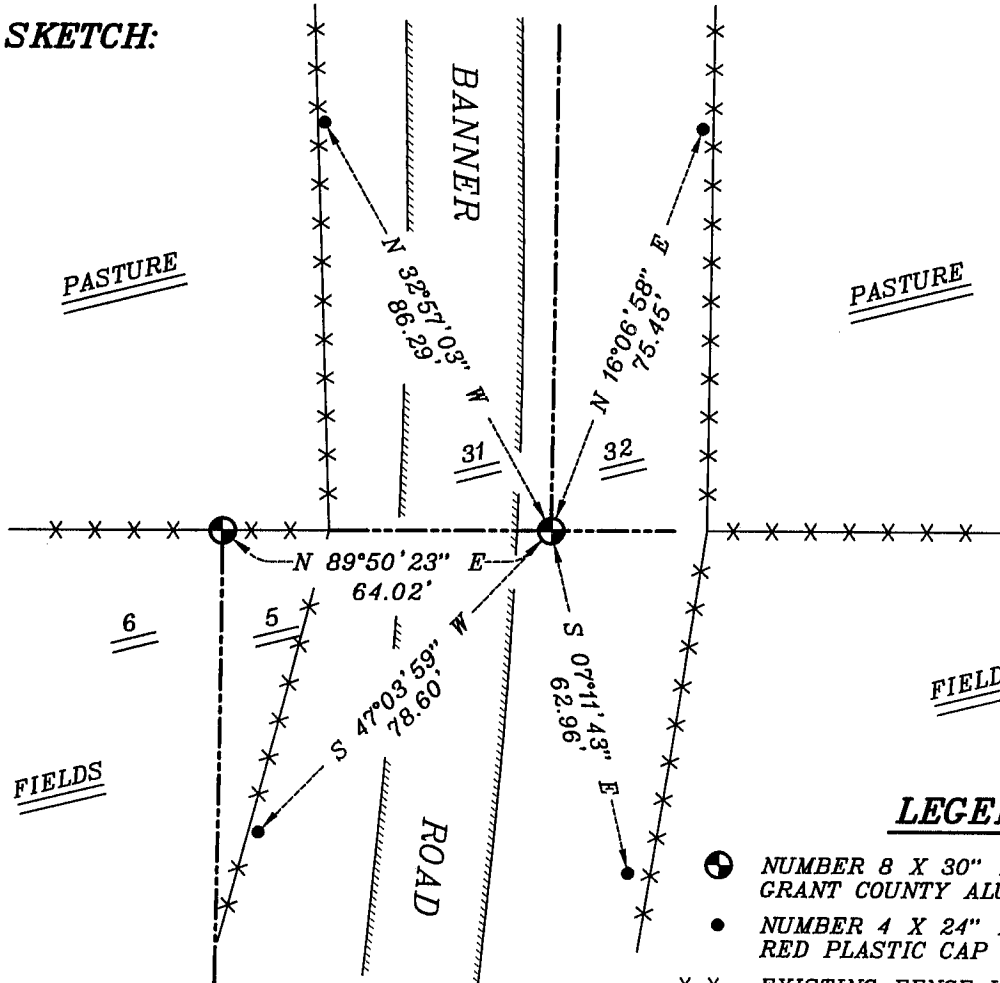
Corner was originally set in 1832 by Sibley.
In 1847 Geo Stuntz tied to the corner.
No Mention of monument type.

DESCRIPTION OF CORNER EVIDENCE FOUND:

I found no evidence of the original corner. I reset the corner based on a single proportion between the monumented South 1/4 of Section 31 and the occupied South 1/4 of Section 32. Verified this location using E.D.M. and G.P.S. methods.

DESCRIPTION OF CORNER AND WITNESS MONUMENTS, references and accessories used to perpetuate the original or re-established location of this corner
WITNESS TO THE CORNER LOCATION: BOBBY SEDGWICK ; SHELBY BLINDERT

SKETCH:



LEGEND

- NUMBER 8 X 30" REBAR SET WITH GRANT COUNTY ALUMINUM CAP
- NUMBER 4 X 24" REBAR SET WITH RED PLASTIC CAP
- **-** EXISTING FENCE LOCATION