

MAY 25 1990

# GRANT COUNTY

## GOVERNMENT CORNER RECORD

SW CORNER, SECTION 33, TOWNSHIP 4 NORTH, RANGE 1 EAST - WEST,  
TOWN, CITY OR VILLAGE OF LIMA, RICHLAND CO.

TYPE OF MONUMENT: 3/4" IRON ROD SET ELEVATION - M.S.L. DATUM \_\_\_\_\_

STATE PLANE COORDINATES: N \_\_\_\_\_

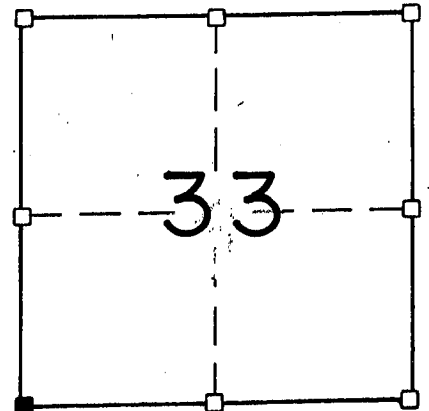
WISCONSIN SOUTH ZONE E \_\_\_\_\_

WITNESSES TO CORNER LOCATION

SEAN M. WALSH

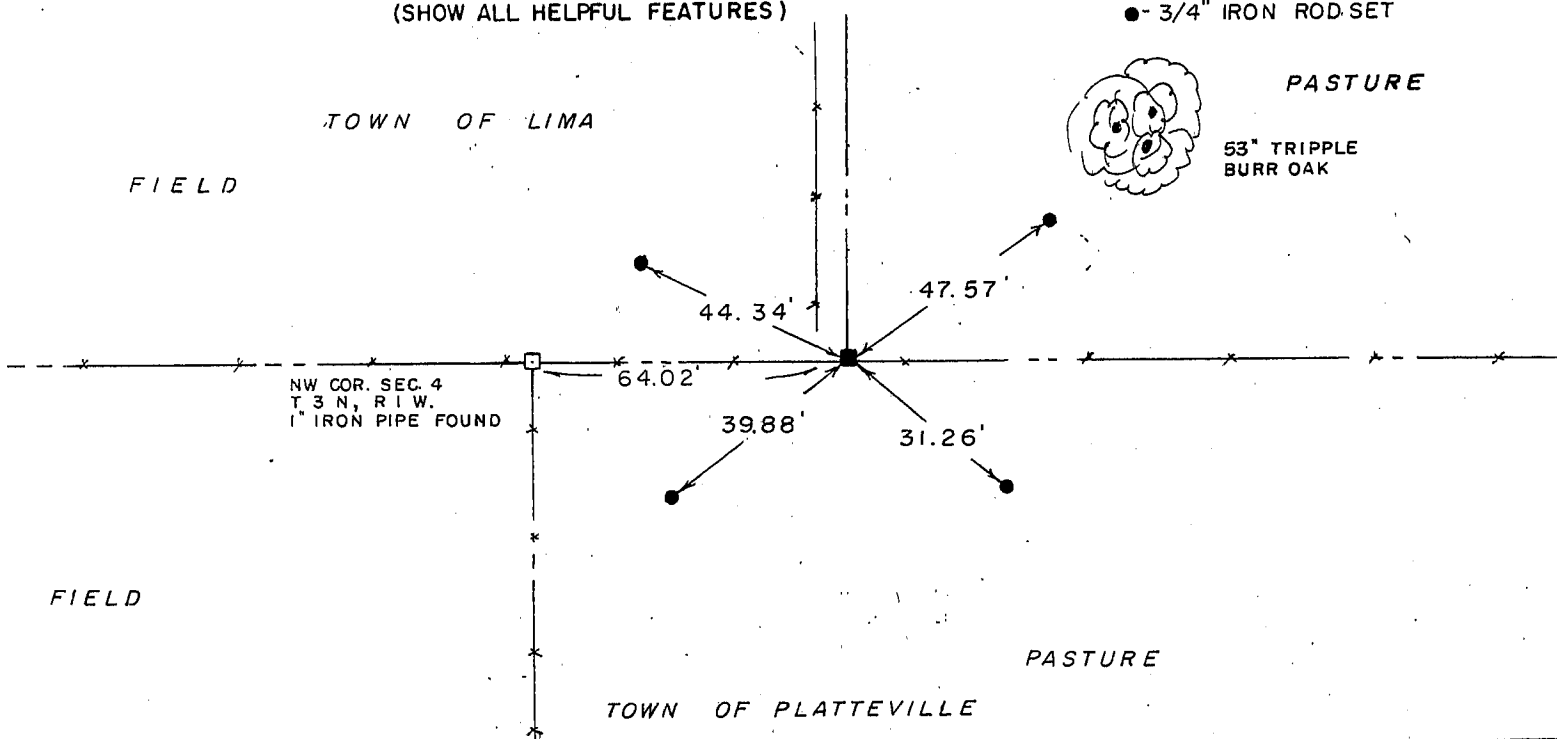
PATRICK J. DEDERICH

SECTION 33, T. 4 N, R. 1 EW  
TOWN OF LIMA



■ - CORNER LOCATION  
● - 3/4" IRON ROD SET

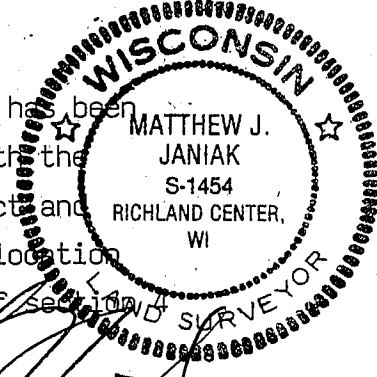
TIE SKETCH  
(SHOW ALL HELPFUL FEATURES)



SURVEYOR'S CERTIFICATE  
STATE OF WISCONSIN)  
RICHLAND COUNTY )SS

SEAL S-1454

I, Matthew J. Janiak, DO HEREBY CERTIFY THAT the above corner has been established under my direction and supervision in accordance with the information contained hereon and that this information is correct and true to the best of my information, knowledge and belief. this location was established at the correction distance from the NW corner of section 4 along the North line of Section 4 as traversed.



DATED THIS 16TH DAY OF MAY, 1990

REGISTERED LAND SURVEYOR

CORNER CODE  
9139