

U.S. PUBLIC LAND SURVEY MONUMENT RECORD - GRANT COUNTY, WI

Section 33, Town 4 North Range 1 West, Town of Lima (a)

NOTE: This form is intended and designed to fulfill all requirements of the Wisconsin Administrative Code Chapter A-E 7.08, U.S. Public Land Survey Monument Record (3) (a) (b) (c) (d) (e) (f) (g) (h) (i).

CERTIFICATE: (i)

I, Aaron J. Austin, Wisconsin Professional Land Surveyor, do hereby certify that the corner location on this record was determined by me and/or under my direct supervision and that this U.S. Public Land Survey Monument Record is correct and complete to the best of my knowledge and belief.

Dated this 27th day of September, 2022.

Aaron J. Austin
Aaron J. Austin, S-2922



Grant County Coordinates:
NAD 83 (2011)
Northing: 495,073.85
Easting: 876,754.43

HISTORY OF CORNER ESTABLISHMENT:

Original corner was set in 1832 by Lucius Lyon.
Matthew Janiak set a 3/4" Rebar and prepared a Survey Monument Record dated 5/16/1990.

DESCRIPTION OF CORNER EVIDENCE FOUND: (b) (f) (g) (h)

I found the 3/4" Rebar and three witness corners Janiak set. I established two additional witness corners after I verified the Monument's location with G.P.S. and E.D.M. methods.

DESCRIPTION OF CORNER AND WITNESS MONUMENTS, references and accessories used to perpetuate the original or re-established location of this corner. (c) (d) (e)

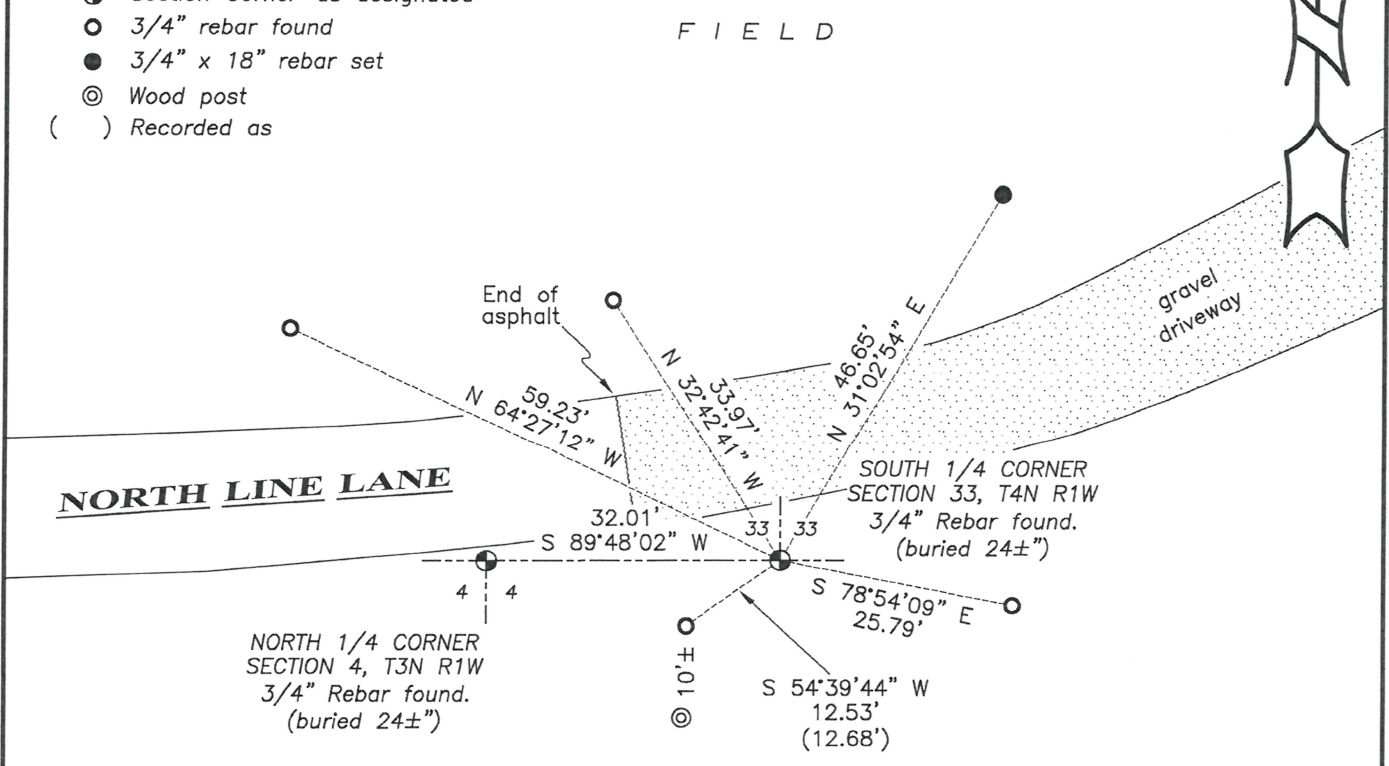
Witnesses to corner location Shane Austin, Tanner Austin.
Drawn by: Owen Austin

SKETCH:

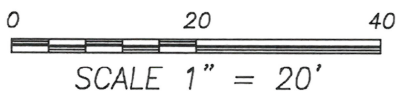
LEGEND

- ⊕ Section Corner—as designated
- 3/4" rebar found
- 3/4" x 18" rebar set
- ⊙ Wood post
- () Recorded as

F I E L D



F I E L D



SCALE 1" = 20'

MAY 25 1990

GRANT COUNTY

GOVERNMENT CORNER RECORD

S 1/4 CORNER, SECTION 33, TOWNSHIP 4 NORTH, RANGE 1 ~~EAST~~ - WEST,
TOWN, CITY OR VILLAGE OF LIMA, RICHLAND CO.

TYPE OF MONUMENT: 3/4" IRON ROD SET ELEVATION - M.S.L. DATUM _____

STATE PLANE COORDINATES: N _____

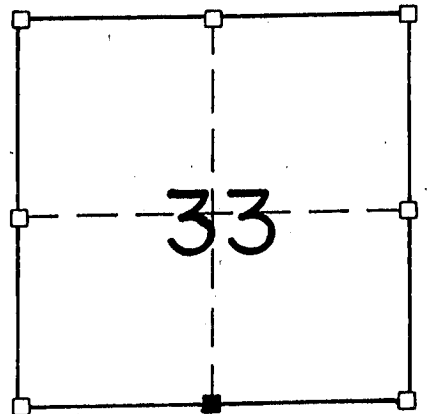
WISCONSIN SOUTH ZONE E _____

WITNESSES TO CORNER LOCATION

SEAN M. WALSH

PATRICK J. DEDERICH

SECTION 33, T 4 N, R 1 W
TOWN OF LIMA



■ - CORNER LOCATION
● - 3/4" IRON ROD SET

NORTH

TIE SKETCH
(SHOW ALL HELPFUL FEATURES)

TOWN OF LIMA

FIELD

GRAVEL

FIELD

TOWN OF PLATTVILLE

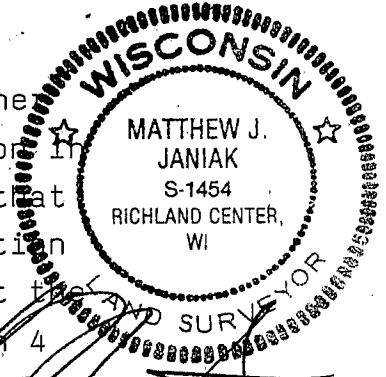
N 1/4 COR. SEC. 4
T 3 N, R 1 W
3/4" IRON ROD SET

DRIVE

SURVEYOR'S CERTIFICATE
STATE OF WISCONSIN)
RICHLAND COUNTY)SS

SEAL S-1454

I, Matthew J. Janiak, DO HEREBY CERTIFY THAT the above corner
has been established under my direction and supervision in
accordance with the information contained hereon and that
this information is correct to the best of my information
knowledge and belief. This location was established at the
correction distance from the North 1/4 corner of section 4
and at proportionate distance from the next corner to the East.



DATED THIS 16TH DAY OF MAY, 19 90

REGISTERED LAND SURVEYOR

CORNER CODE

128