

# GRANT COUNTY U.S. PUBLIC LAND SURVEY MONUMENT RECORD

INSTRUCTIONS: THIS RECORD SHALL SHOW THE LOCATION OF THE CORNER AND SHALL INCLUDE ALL OF THE FOLLOWING ELEMENTS (A THROUGH I).

(A) IDENTIFY THE CORNER AS REFERENCED TO THE U.S. PUBLIC LAND SURVEY SYSTEM

■ = CORNER MONUMENT RESTORED

WITNESSES TO CORNER LOCATION:

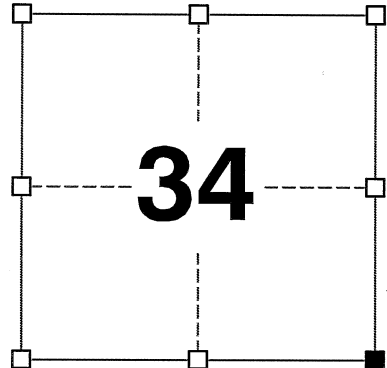
JAY P. ADAMS  
TYLER D. ATKINSON

GEOGRAPHIC COORDINATES,  
NAD 83 (2011) ADJUSTMENT:

LATITUDE: 42° 46' 09.09386"  
LONGITUDE: 90° 27' 57.09575"

WISCONSIN COORDINATE REFERENCE SYSTEM (WISCRS),  
GRANT COUNTY, NAD 83 (2011) ADJUSTMENT:

NORTHING: 495,105.326  
EASTING: 884,726.959



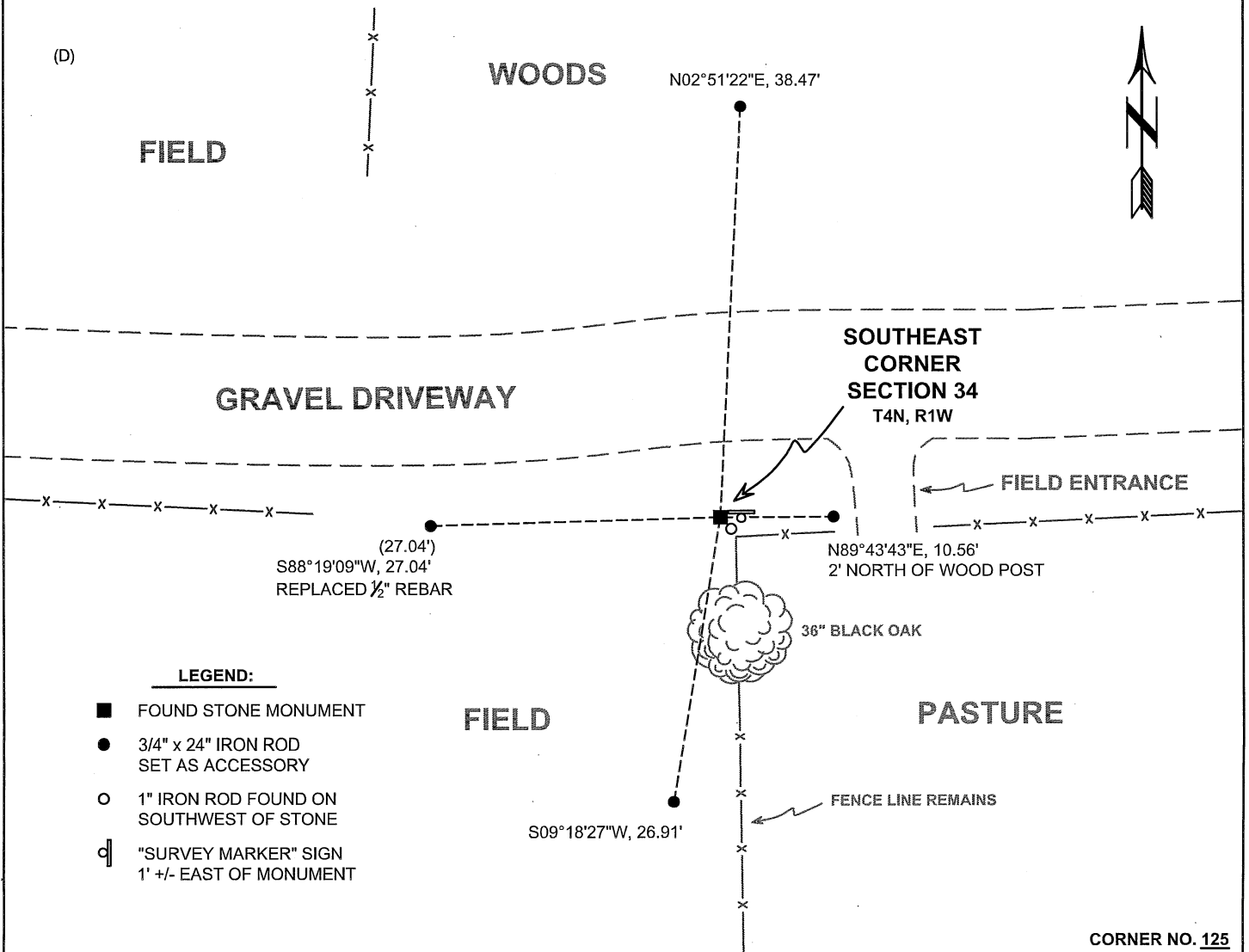
SECTION 34  
TOWNSHIP 4 NORTH, RANGE 1 WEST  
TOWN OF LIMA

(B) DESCRIBE ANY RECORD EVIDENCE, MONUMENT EVIDENCE, OCCUPATIONAL EVIDENCE, TESTIMONIAL EVIDENCE OR ANY OTHER MATERIAL EVIDENCE YOU CONSIDERED, AND WHETHER THE MONUMENT WAS FOUND OR PLACED.

I COULD FIND NO MONUMENTS FROM THE ORIGINAL GOVERNMENT SURVEY OR THE HISTORIC COUNTY SURVEYOR'S SUBSEQUENT RESURVEYS. I RECOVERED THE STONE MONUMENT WITH A 1" REBAR ON THE SOUTHEAST SIDE OF THE STONE TO HELP LOCATE THE MONUMENT REPORTED BY LARRY AUSTIN. I ACCEPTED THIS LOCATION AS THE BEST AVAILABLE EVIDENCE OF THE ORIGINAL GOVERNMENT CORNER AND LEFT IT IN PLACE.

(C) IN THE PLAN VIEW DRAWING BELOW, PROVIDE REFERENCE TIES TO AT LEAST 4 WITNESS MONUMENTS. WITNESS MONUMENTS SHALL BE MADE OF CONCRETE, NATURAL STONE, IRON, BEARING TREES OR ANY OTHER EQUALLY DURABLE MATERIAL. DEPICT THE RELEVANT MONUMENTS AND REFERENCE TIES WITH SUFFICIENT DETAIL TO ENABLE ACCURATE RELOCATION OF THE CORNER IF THE CORNER MONUMENT IS DISTURBED.

(D)



**LEGEND:**

- FOUND STONE MONUMENT
- 3/4" x 24" IRON ROD SET AS ACCESSORY
- 1" IRON ROD FOUND ON SOUTHWEST OF STONE
- "SURVEY MARKER" SIGN 1' +/- EAST OF MONUMENT

41125

(E) DESCRIBE ANY MATERIAL DISCREPANCY BETWEEN THE LOCATION OF THE CORNER AS RESTORED OR REESTABLISHED AND THE LOCATION OF THAT CORNER AS PREVIOUSLY RESTORED OR REESTABLISHED BY DISTANCE AND DIRECTION. SHOW THE DISCREPANCY ON THE PLAN VIEW DRAWING UNDER (D), ABOVE. SHOW THE DISTANCES BETWEEN THE CORNER AS PREVIOUSLY RESTORED OR REESTABLISHED AND (1) THE CORNER AS RESTORED OR REESTABLISHED, AND (2) TO AT LEAST 2 OF THE WITNESS MONUMENTS SHOWN ON THE DRAWING IN (D) ABOVE.

N/A

(F) WAS THE CORNER RESTORED THROUGH ACCEPTANCE OF (1) AN OBLITERATED EVIDENCE LOCATION, OR (2) A FOUND PERPETUATED LOCATION?

(2) A FOUND PERPETUATED LOCATION.

(G&H) WAS THE CORNER REESTABLISHED THROUGH LOST CORNER PROPORTIONATE METHODS? IF SO, SHOW THE METHOD, INCLUDING THE DIRECTIONS AND DISTANCES TO OTHER PUBLIC LAND SURVEY CORNERS USED AS EVIDENCE OR USED FOR PROPORTIONING IN DETERMINING THE CORNER LOCATION.

N/A

CORNER HISTORY

THE ORIGINAL GOVERNMENT CORNER WAS ESTABLISHED BY SYLVESTER SYBLEY IN THE SECOND QUARTER OF 1832.

IN A SURVEY DATED THE SECOND QUARTER OF 1833, ROBERT CLARK JR. INTERSECTED THE NORTH BOUNDARY POST OF THE SOUTHEAST CORNER OF SECTION 34, T4N, R1W.

IN SURVEYS DATED APRIL 1856, C.J. OVERTON FOUND THE ORIGINAL CORNER.

IN A SURVEY DATED 24 DECEMBER 1868, JOEL BARBER VISITED THE CORNER.

IN A SURVEY PLAT DATED 5 NOVEMBER 1993, LARRY AUSTIN REPORTED FINDING A STONE MONUMENT AT THE CORNER.

IN A TIE SHEET DATED 11 JANUARY 1995, LARRY AUSTIN REPORTED FINDING A STONE MONUMENT AT THE CORNER.

IN A CERTIFIED SURVEY MAP DATED 3 JULY 2002, LARRY AUSTIN REPORTED FINDING A STONE MONUMENT AT THE CORNER.

IN A PLAT OF SURVEY DATED 19 AUGUST 2005, LARRY AUSTIN REPORTED FINDING A STONE MONUMENT AT THE CORNER.

IN A PLAT OF SURVEY DATED 17 DECEMBER 2007 LARRY AUSTIN REPORTED FINDING A STONE MONUMENT AT THE CORNER.

IN A PLAT OF SURVEY DATED 15 DECEMBER 2009, LARRY AUSTIN REPORTED FINDING A STONE MONUMENT AT THE CORNER.

IN A PLAT OF SURVEY DATED 11 AUGUST 2010, LARRY AUSTIN REPORTED FINDING A STONE MONUMENT AT THE CORNER.

AFFIX LAND SURVEYOR SEAL

(I) I, JAY P. ADAMS, P.L.S. - 2879, CERTIFY THAT THE CORNER LOCATION SHOWN ON THIS RECORD WAS DETERMINED BY ME OR UNDER MY DIRECTION AND CONTROL AND THAT THIS U.S. PUBLIC LAND SURVEY MONUMENT RECORD IS CORRECT AND COMPLETE TO THE BEST OF MY KNOWLEDGE AND BELIEF.

28 OCTOBER 2022

SIGNATURE

DATE

