

(E) DESCRIBE ANY MATERIAL DISCREPANCY BETWEEN THE LOCATION OF THE CORNER AS RESTORED OR REESTABLISHED AND THE LOCATION OF THAT CORNER AS PREVIOUSLY RESTORED OR REESTABLISHED BY DISTANCE AND DIRECTION. SHOW THE DISCREPANCY ON THE PLAN VIEW DRAWING UNDER (D), ABOVE. SHOW THE DISTANCES BETWEEN THE CORNER AS PREVIOUSLY RESTORED OR REESTABLISHED AND (1) THE CORNER AS RESTORED OR REESTABLISHED, AND (2) TO AT LEAST 2 OF THE WITNESS MONUMENTS SHOWN ON THE DRAWING IN (D) ABOVE.

N/A

(F) WAS THE CORNER RESTORED THROUGH ACCEPTANCE OF (1) AN OBLITERATED EVIDENCE LOCATION, OR (2) A FOUND PERPETUATED LOCATION?

(2) A FOUND PERPETUATED LOCATION.

(G&H) WAS THE CORNER REESTABLISHED THROUGH LOST CORNER PROPORTIONATE METHODS? IF SO, SHOW THE METHOD, INCLUDING THE DIRECTIONS AND DISTANCES TO OTHER PUBLIC LAND SURVEY CORNERS USED AS EVIDENCE OR USED FOR PROPORTIONING IN DETERMINING THE CORNER LOCATION.

N/A

CORNER HISTORY

THE ORIGINAL GOVERNMENT CORNER WAS ESTABLISHED BY SYLVESTER SYBLEY IN THE SECOND QUARTER OF 1832.

IN A PLAT OF SURVEY LAST REVISED 24 JULY 1993 AND SUBSEQUENT TIE SHEET DATED 20 AUGUST 1993, LARRY AUSTIN REPORTED SETTING A 3/4" X 24" REBAR AT THE CORNER.

IN A PLAT OF SURVEY DATED 13 FEBRUARY 1998, LARRY AUSTIN REPORTED FINDING A NO. 6 REBAR AT THE CORNER.

IN A PLAT OF SURVEY DATED 9 OCTOBER 1999, LARRY AUSTIN REPORTED FINDING A NO. 6 REBAR AT THE CORNER.

IN A CERTIFIED SURVEY MAP DATED 31 AUGUST 2002, LARRY AUSTIN REPORTED FINDING A NO. 6 REBAR AT THE CORNER.

IN A CERTIFIED SURVEY MAP DATED 25 JANUARY 2003, LARRY AUSTIN REPORTED FINDING A NO. 6 REBAR AT THE CORNER.

IN A PLAT OF SURVEY DATED 2 DECEMBER 2004, LARRY AUSTIN REPORTED FINDING A NO. 6 REBAR AT THE CORNER.

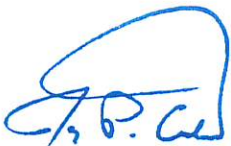
IN A PLAT OF SURVEY DATED 10 DECEMBER 2009, LARRY AUSTIN REPORTED FINDING A NO. 6 REBAR AT THE CORNER.

IN A PLAT OF SURVEY DATED 6 APRIL 2011, AARON AUSTIN REPORTED FINDING A NO. 6 REBAR AT THE CORNER.

IN A PLAT OF SURVEY DATED 6 APRIL 2016, STANLEY KING REPORTED FINDING A NO. 8 REBAR WITH A GRANT COUNTY ALUMINUM CAP AT THE CORNER.

IN A CERTIFIED SURVEY MAP LAST REVISED 26 OCTOBER 2016, STANLEY KIND REPORTED FINDING A NO. 8 REBAR WITH A GRANT COUNTY ALUMINUM CAP AT THE CORNER.

(I) I, JAY P. ADAMS, P.L.S. - 2879, CERTIFY THAT THE CORNER LOCATION SHOWN ON THIS RECORD WAS DETERMINED BY ME OR UNDER MY DIRECTION AND CONTROL AND THAT THIS U.S. PUBLIC LAND SURVEY MONUMENT RECORD IS CORRECT AND COMPLETE TO THE BEST OF MY KNOWLEDGE AND BELIEF.

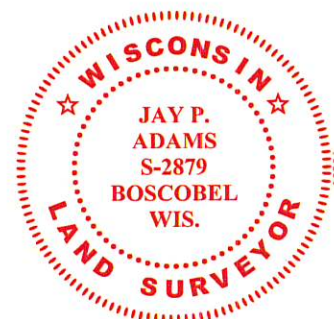


SIGNATURE

24 SEPTEMBER 2022

DATE

AFFIX LAND SURVEYOR SEAL



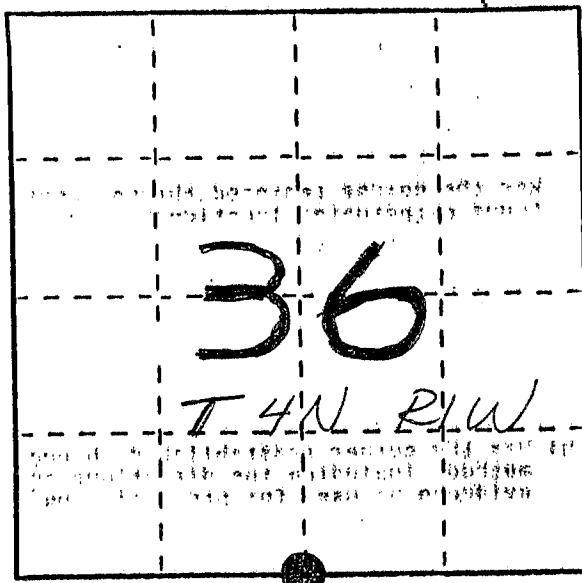
U. S. PUBLIC LAND SURVEY MONUMENT RECORD

INSTRUCTIONS: This record shall show the location of the corner and shall include all of the following nine elements (a through i).

(a) Identify the corner by reference to the U.S. public land survey system.

● = Corner monument restored.

S 1/4 COR, SECTION 36
T 4 N R 1 W OF THE
4th P.M., GRANT COUNTY,
WI.

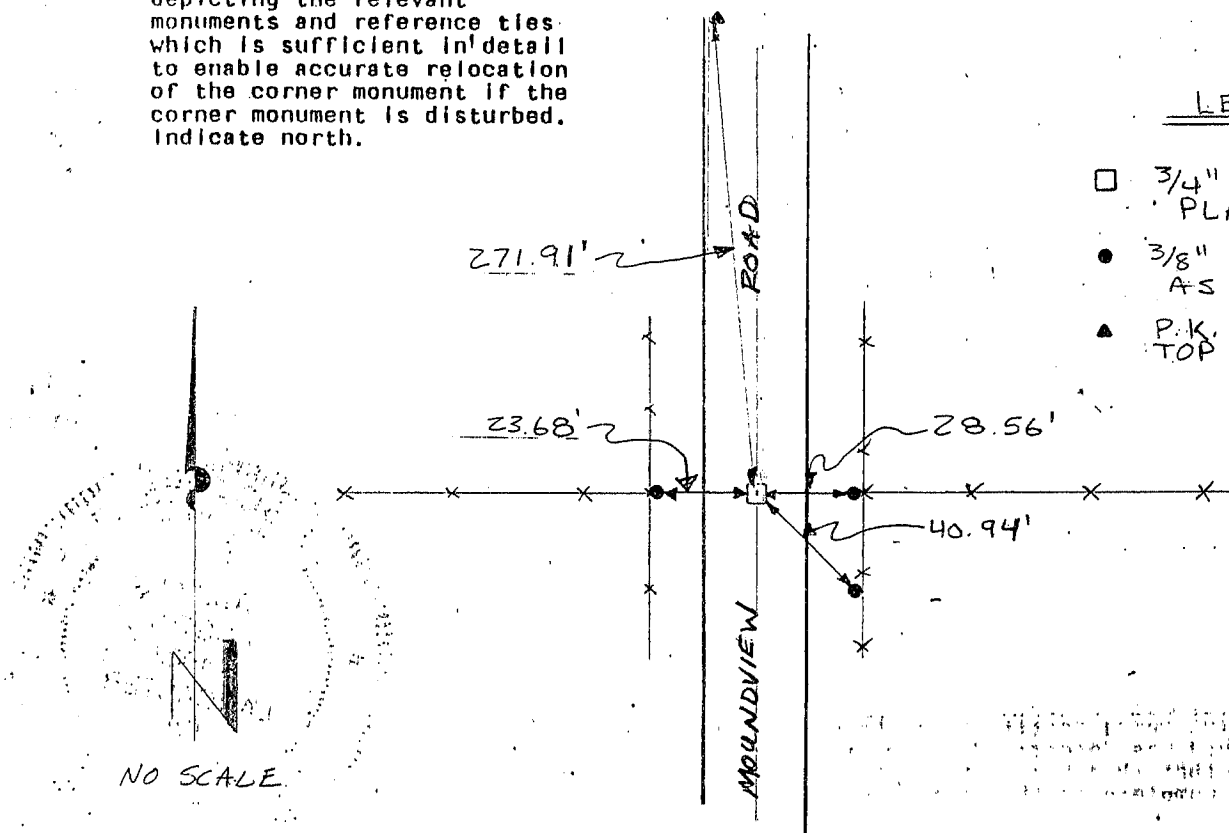


(b) Describe any record evidence, monument evidence, occupational evidence, testimonial evidence or any other material evidence you considered, and whether the monument was found or placed.

MONUMENT WAS PLACED; BASED ON OCCUPATIONAL EVIDENCE & VERIFIED BY EDM TRAVERSE OF THE AREA

(c) In the plan view drawing below, provide reference ties to at least 4 witness monuments, or, if the location is within a municipality, to at least 2 witness monuments. (Witness monuments shall be made of concrete, natural stone, iron or other equally durable material, ~~except~~ wood.) Describe witness monuments.

(d) Show a plan view drawing depicting the relevant monuments and reference ties which is sufficient in detail to enable accurate relocation of the corner monument if the corner monument is disturbed. Indicate north.



LEGEND

- 3/4" x 2 1/2" Bar PLACED
- 3/8" SPIKES SET AS TIES - 12" LONG.
- ▲ P.K. SET AS TIE TOP HILL EDGE BT

(e) Describe any material discrepancy between the location of the corner as restored or reestablished and the location of that corner as previously restored or reestablished by distance and direction. Show the discrepancy on the plan view drawing under (d), above. Show the distances between the corner as previously restored or reestablished and (1) the corner as restored or reestablished, and (2) to at least 2 of the witness monuments shown on the drawing in (d), above.

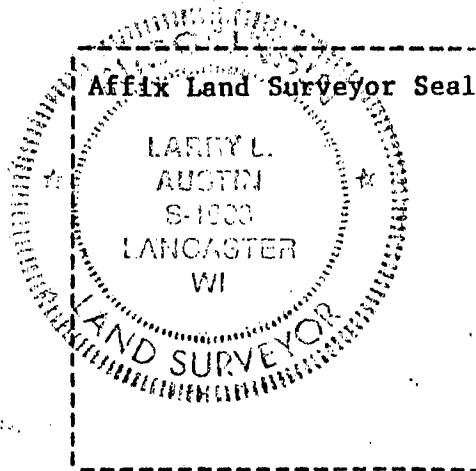
NA

(f) Was the corner restored through acceptance of (1) an obliterated evidence location, or, (2) a found perpetuated location?

(2) FD. PERPETUATED LOCATION

(g&h) Was the corner reestablished through lost corner proportionate methods? If so, show the method, including the directions and distances to other public land survey corners used as evidence or used for proportioning in determining the corner location?

NO



(1) I, LARRY L. AUSTIN
(type or print name) certify that the corner location shown on this record was determined by me or under my direction and control and that this U.S. Public Land Survey Monument Record is correct and complete to the best of my knowledge and belief.

Larry L. Austin 8/20/93
Signature Date