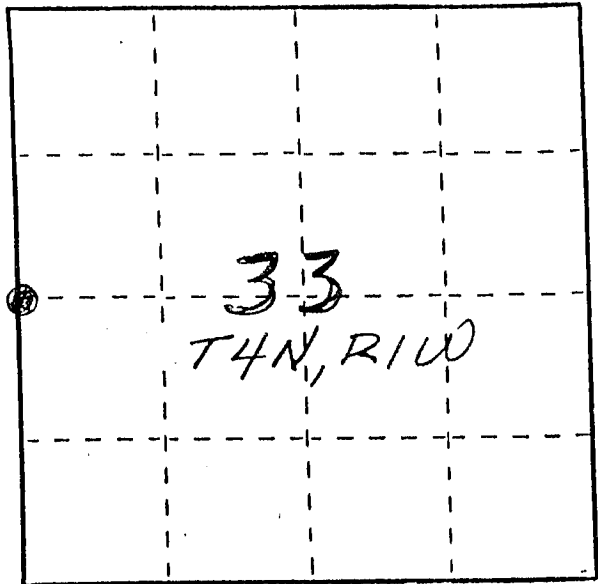


U. S. PUBLIC LAND SURVEY MONUMENT RECORD

INSTRUCTIONS: This record shall show the location of the corner and shall include all of the following nine elements (a through i).

- (a) Identify the corner by reference to the U.S. public land survey system.
- ⊙ = Corner monument restored.

WEST 1/4 COR., SEC 33,
T4N, R1W, LIMA TWP.,
GRANT CO., WI



- (b) Describe any record evidence, monument evidence, occupational evidence, testimonial evidence or any other material evidence you considered, and whether the monument was found or placed.

MONUMENT WAS PLACED; BASED ON OCCUPIED EVIDENCE & VERIFIED BY EDM TRAVERSE

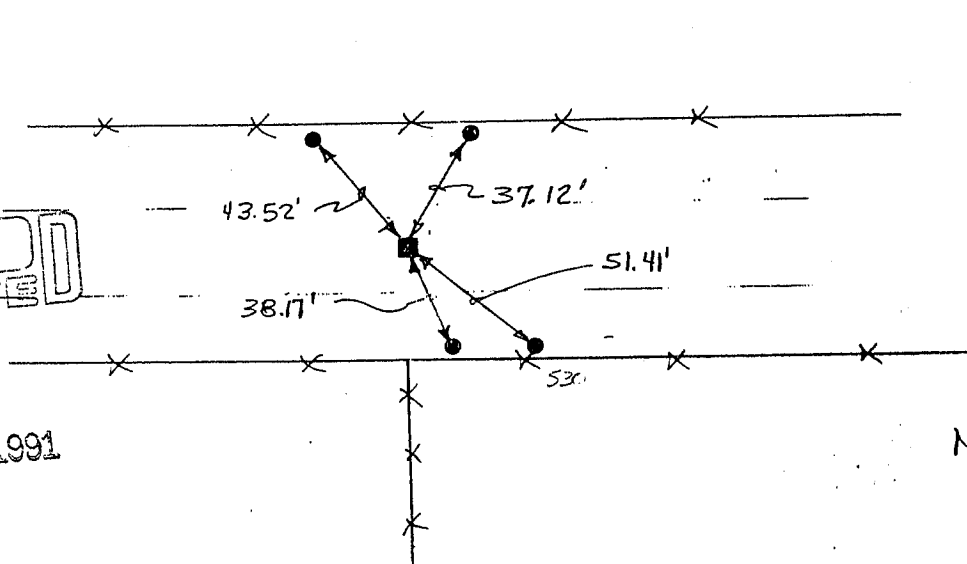
- (c) In the plan view drawing below, provide reference ties to at least 4 witness monuments, or, if the location is within a municipality, to at least 2 witness monuments. (Witness monuments shall be made of concrete, natural stone, iron or other equally durable material, ~~except~~ wood.) Describe witness monuments.

LEGEND

- (d) Show a plan view drawing depicting the relevant monuments and reference ties which is sufficient in detail to enable accurate relocation of the corner monument if the corner monument is disturbed. Indicate north.

- R.R. SPIKE SET 2" BELOW RDWAY SURFACE = 1/4 CORNER
- 3/8" X 10" STEEL PEG SET = TIE
- X — X — EXIST. FENCES

GRANT COUNTY CLERK
RECEIVED



JUN 10 1991

No SCALE

P. 116

Describe any material discrepancy between the location of the corner as restored or reestablished and the location of that corner as previously restored or reestablished by distance and direction. Show the discrepancy on the plan view drawing under (d), above. Show the distances between the corner as previously restored or reestablished and (1) the corner as restored or reestablished, and (2) to at least 2 of the witness monuments shown on the drawing in (d), above.

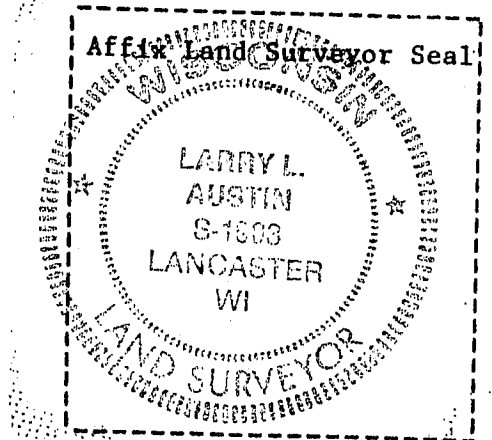
NONE

(f) Was the corner restored through acceptance of (1) an obliterated evidence location, or, (2) a found perpetuated location?

(2) FOUND PERPETUATED LOCATION = FENCE SO. &
SPUT FENCES on TWP ROAD

(g&h) Was the corner reestablished through lost corner proportionate methods? If so, show the method, including the directions and distances to other public land survey corners used as evidence or used for proportioning in determining the corner location?

No



(1) I, LARRY L. AUSTIN
(type or print name) certify that the corner location shown on this record was determined by me or under my direction and control and that this U.S. Public Land Survey Monument Record is correct and complete to the best of my knowledge and belief.

Larry L. Austin
Signature

12-17-90
Date

US. PUBLIC LAND SURVEY MONUMENT RECORD

CORNER DESCRIPTION: E 1/4 CORNER, SECTION 32, T 4 N, R 1 W

STATE PLANE COORDINATES: N _____, E _____

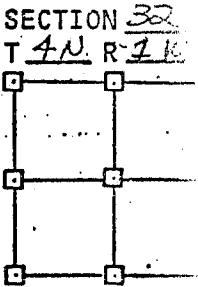
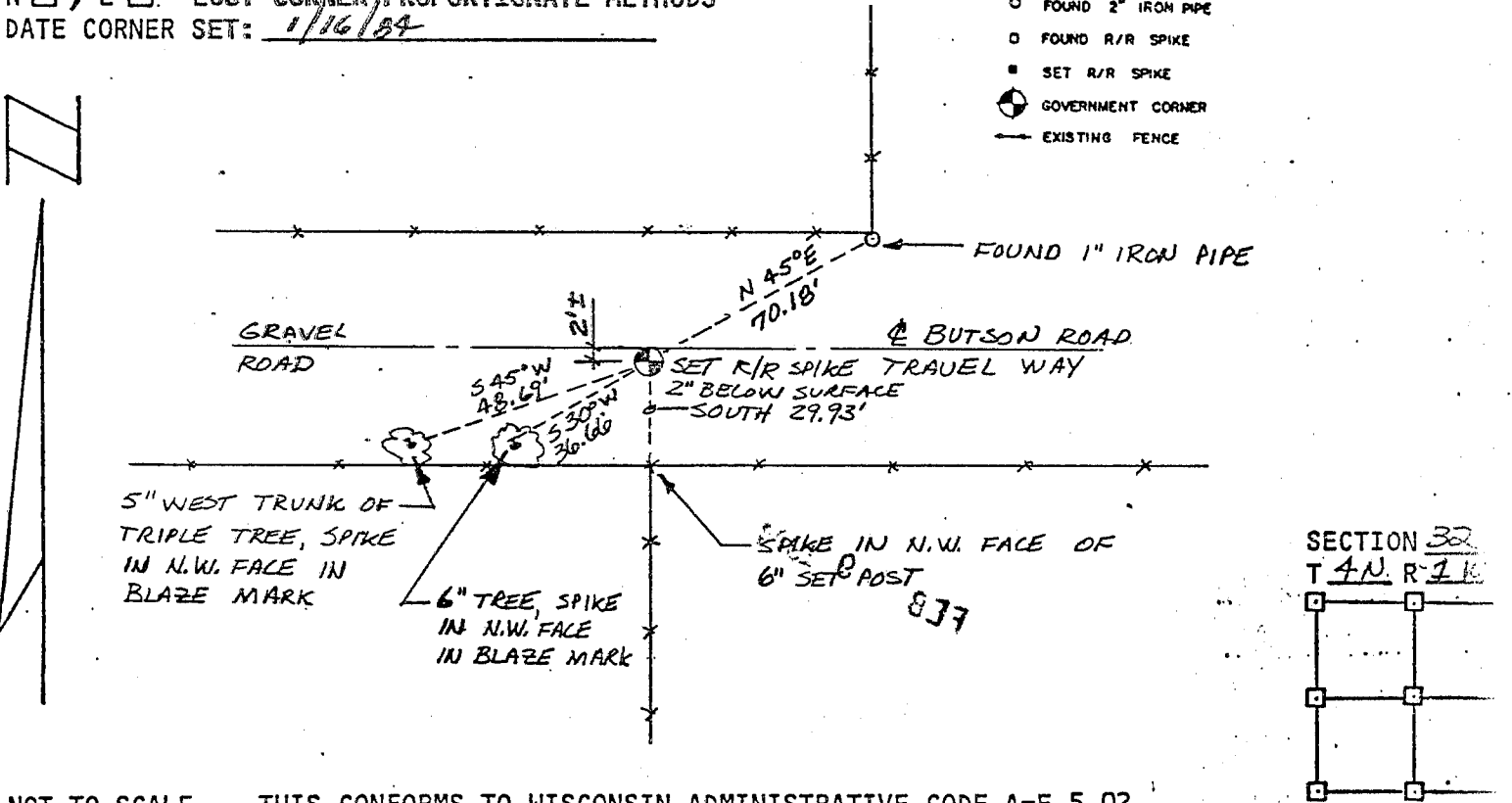
THETA ANGLE: _____

HORIZONTAL DATUM: WISCONSIN STATE PLANE COORDINATE SYSTEM, SOUTH ZONE

EVIDENCE: SET R/R SPIKE OVER FOUND 10 PENNY NAIL BELIEVED TO HAVE BEEN SET BY JOHN ORTH, RLS. FROM AN UNRECORDED SURVEY

MONUMENT: FOUND , PLACED
 METHOD OF RESTORATION (RE-ESTABLISHMENT):
 ACCEPTED EXISTING MONUMENT (10 PENNY NAIL)
 N, E ACCEPTED OCCUPATION
 N, E LOST CORNER, PROPORTIONATE METHODS
 DATE CORNER SET: 1/16/84

- LEGEND
- ▲ SET #6 REBAR, 1.13 LBS. PER LINEAL FT. MIN. WT.
 - SET 1" X 24" IRON PIPE, 1.13 LBS. PER LINEAL FT. MIN. WT.
 - SET 2" X 30" IRON PIPE, 3.65 LBS. PER LINEAL FT. MIN. WT.
 - FOUND 1" IRON PIPE
 - FOUND 2" IRON PIPE
 - FOUND R/R SPIKE
 - SET R/R SPIKE
 - ⊙ GOVERNMENT CORNER
 - EXISTING FENCE



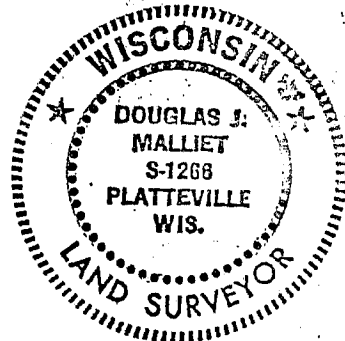
NOT TO SCALE THIS CONFORMS TO WISCONSIN ADMINISTRATIVE CODE A-E 5.02

SURVEYOR'S AFFIDAVIT:

STATE OF WISCONSIN)
GRANT COUNTY) SS

I hereby certify that I, DOUGLAS J. MALLIET, have complied with the Wisconsin State Statutes, Statutes of the United States, and the rules and regulations made by the Secretary of the Interior in the location of the corner shown above.

DATE OF SURVEY: 1/16/84
Douglas J. Malliet
 REGISTERED LAND SURVEYOR
 # 1210



D. F. BURBACH MUNICIPAL & CIVIL ENGINEERS

610 NORTH SECOND STREET • PLATTEVILLE, WISCONSIN 53818 • (608) 348-3262