

DEMOM
41115

GRANT COUNTY U.S. PUBLIC LAND SURVEY MONUMENT RECORD

INSTRUCTIONS: THIS RECORD SHALL SHOW THE LOCATION OF THE CORNER AND SHALL INCLUDE ALL OF THE FOLLOWING ELEMENTS (A THROUGH I).

(A) IDENTIFY THE CORNER AS REFERENCED TO THE U.S. PUBLIC LAND SURVEY SYSTEM

■ = CORNER MONUMENT RESTORED

WITNESSES TO CORNER LOCATION:

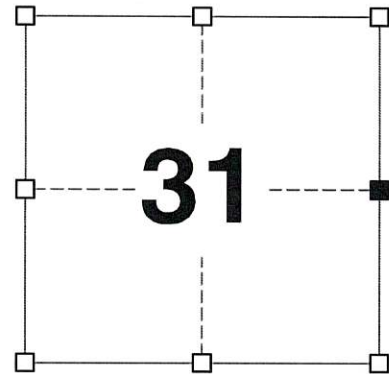
JAY P. ADAMS	PAIGE O. JELINEK
TYLER D. ATKINSON	TODD C. PATTON

GEOGRAPHIC COORDINATES,
NAD 83 (2011) ADJUSTMENT:

LATITUDE: 42° 46' 35.20612"
LONGITUDE: 90° 31' 31.21096"

WISCONSIN COORDINATE REFERENCE SYSTEM (WISCRS),
GRANT COUNTY, NAD 83 (2011) ADJUSTMENT:

NORTHING: 497,691.394
EASTING: 868,747.073



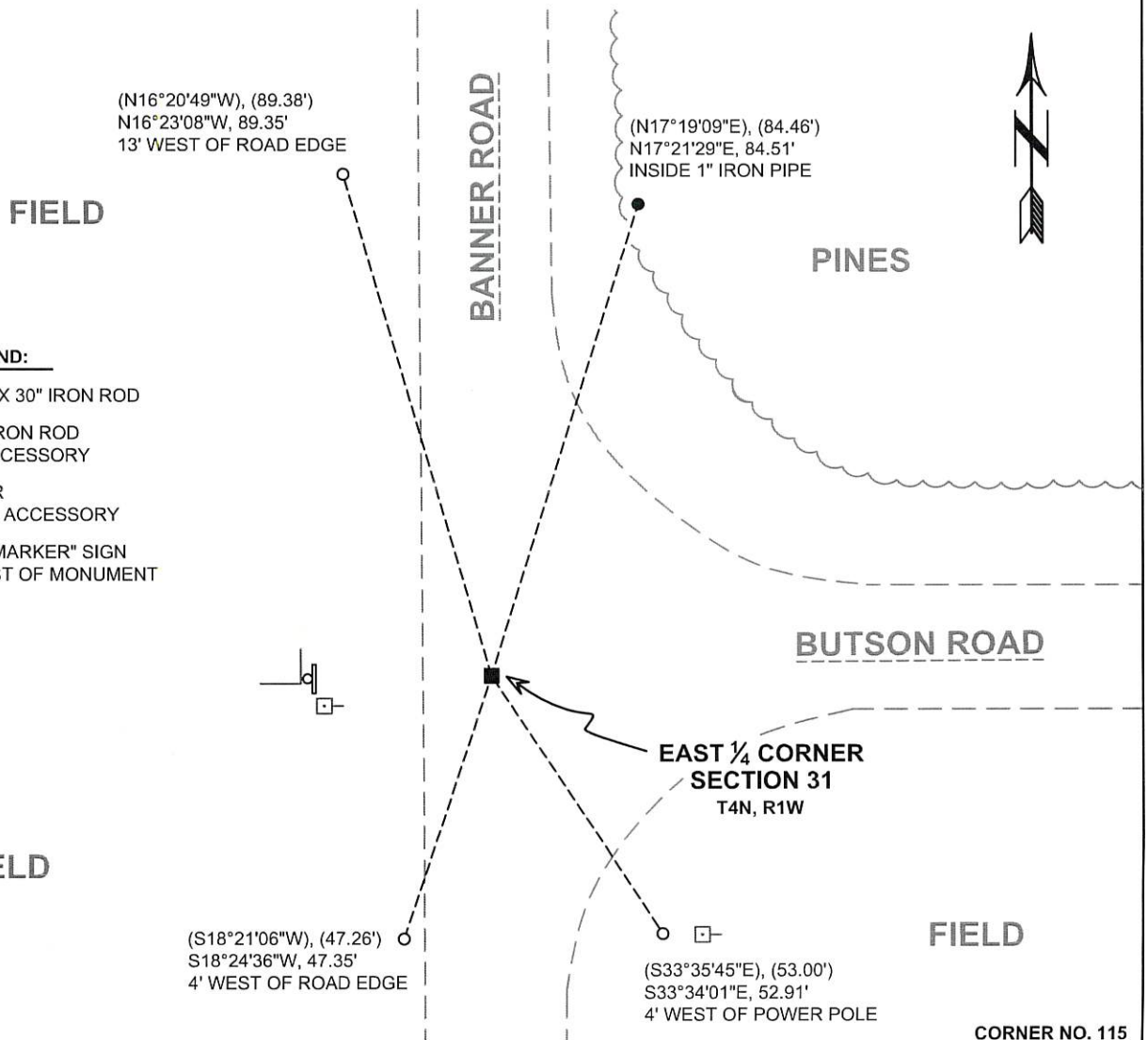
SECTION 31
TOWNSHIP 4 NORTH, RANGE 1 WEST
TOWN OF LIMA

(B) DESCRIBE ANY RECORD EVIDENCE, MONUMENT EVIDENCE, OCCUPATIONAL EVIDENCE, TESTIMONIAL EVIDENCE OR ANY OTHER MATERIAL EVIDENCE YOU CONSIDERED, AND WHETHER THE MONUMENT WAS FOUND OR PLACED.

I COULD FIND NO MONUMENTS FROM THE ORIGINAL GOVERNMENT SURVEY OR THE HISTORIC COUNTY SURVEYOR'S SUBSEQUENT RESURVEYS. I RECOVERED THE RAIL ROAD SPIKE REPORTED BY CHAFER. I ACCEPTED THIS LOCATION AS THE BEST AVAILABLE EVIDENCE OF THE ORIGINAL GOVERNMENT CORNER AND REMONUMENTED IT WITH A 1-1/4" X 30" IRON ROD.

(C) IN THE PLAN VIEW DRAWING BELOW, PROVIDE REFERENCE TIES TO AT LEAST 4 WITNESS MONUMENTS. WITNESS MONUMENTS SHALL BE MADE OF CONCRETE, NATURAL STONE, IRON, BEARING TREES OR ANY OTHER EQUALLY DURABLE MATERIAL. DEPICT THE RELEVANT MONUMENTS AND REFERENCE TIES WITH SUFFICIENT DETAIL TO ENABLE ACCURATE RELOCATION OF THE CORNER IF THE CORNER MONUMENT IS DISTURBED.

(D)



LEGEND:

- SET 1-1/4" X 30" IRON ROD
- 3/4" x 24" IRON ROD SET AS ACCESSORY
- 3/4" REBAR FOUND AS ACCESSORY
- "SURVEY MARKER" SIGN 32' +/- WEST OF MONUMENT

(E) DESCRIBE ANY MATERIAL DISCREPANCY BETWEEN THE LOCATION OF THE CORNER AS RESTORED OR REESTABLISHED AND THE LOCATION OF THAT CORNER AS PREVIOUSLY RESTORED OR REESTABLISHED BY DISTANCE AND DIRECTION. SHOW THE DISCREPANCY ON THE PLAN VIEW DRAWING UNDER (D), ABOVE. SHOW THE DISTANCES BETWEEN THE CORNER AS PREVIOUSLY RESTORED OR REESTABLISHED AND (1) THE CORNER AS RESTORED OR REESTABLISHED, AND (2) TO AT LEAST 2 OF THE WITNESS MONUMENTS SHOWN ON THE DRAWING IN (D) ABOVE.

N/A

(F) WAS THE CORNER RESTORED THROUGH ACCEPTANCE OF (1) AN OBLITERATED EVIDENCE LOCATION, OR (2) A FOUND PERPETUATED LOCATION?

(2) A FOUND PERPETUATED LOCATION.

(G&H) WAS THE CORNER REESTABLISHED THROUGH LOST CORNER PROPORTIONATE METHODS? IF SO, SHOW THE METHOD, INCLUDING THE DIRECTIONS AND DISTANCES TO OTHER PUBLIC LAND SURVEY CORNERS USED AS EVIDENCE OR USED FOR PROPORTIONING IN DETERMINING THE CORNER LOCATION.

N/A

CORNER HISTORY

THE ORIGINAL GOVERNMENT CORNER WAS ESTABLISHED BY ROBERT CLARK JR. IN THE FIRST QUARTER OF 1833.

IN A SURVEY DATED 11 DECEMBER 1840, JOS. E. FREEMAN FOUND THE ORIGINAL CORNER.

IN A SURVEY DATED 12 AUGUST 1847, GEORGE STUNTZ FOUND THE ORIGINAL CORNER.

IN A SURVEY DATED 1850, GEORGE STUNTZ VISITED THE CORNER.

IN A PLAT OF SURVEY DATED 18 FEBRUARY 1987, PAUL CHAFER REPORTED SETTING A RAIL ROAD SPIKE AT THE CORNER.

IN A SURVEY PLAT LAST REVISED 6 FEBRUARY 1995, LARRY AUSTIN REPORTED FINDING A RAIL ROAD SPIKE AT THE CORNER.

IN A SURVEY PLAT DATED 23 APRIL 1997, LARRY AUSTIN REPORTED FINDING A RAIL ROAD SPIKE AT THE CORNER.

IN A PLAT OF SURVEY DATED 23 JULY 1999, LARRY AUSTIN REPORTED FINDING A RAIL ROAD SPIKE AT THE CORNER.

IN A CERTIFIED SURVEY MAP DATED 5 JULY 2004, LARRY AUSTIN REPORTED FINDING A RAIL ROAD SPIKE AT THE CORNER.

IN A PLAT OF SURVEY AND CERTIFIED SURVEY MAP DATED 19 OCTOBER 2018 AND 16 NOVEMBER 2018, STANLEY KING REPORTED FINDING A RAIL ROAD SPIKE AT THE CORNER.

IN A PLAT OF SURVEY AND SUBSEQUENT TIE SHEET DATED JUNE 2019, AARON AUSTIN REPORTED FINDING A RAIL ROAD SPIKE AT THE CORNER.

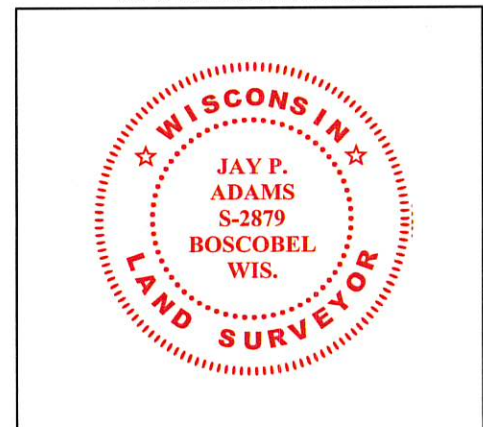
(I) I, JAY P. ADAMS, P.L.S. - 2879, CERTIFY THAT THE CORNER LOCATION SHOWN ON THIS RECORD WAS DETERMINED BY ME OR UNDER MY DIRECTION AND CONTROL AND THAT THIS U.S. PUBLIC LAND SURVEY MONUMENT RECORD IS CORRECT AND COMPLETE TO THE BEST OF MY KNOWLEDGE AND BELIEF.

SIGNATURE

24 SEPTEMBER 2022

DATE

AFFIX LAND SURVEYOR SEAL



U.S. PUBLIC LAND SURVEY MONUMENT RECORD - GRANT COUNTY, WI

Section 31, Town 4 North Range 1 West, Town of Lima (a)

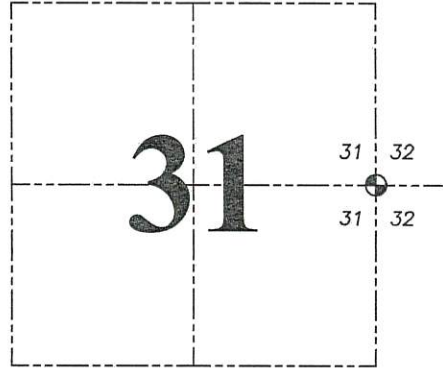
NOTE: This form is intended and designed to fulfill all requirements of the Wisconsin Administrative Code Chapter A-E 7.08, U.S. Public Land Survey Monument Record (3) (a) (b) (c) (d) (e) (f) (g) (h) (i).

CERTIFICATE: (i)

I, Aaron J. Austin, Wisconsin Professional Land Surveyor, do hereby certify that the corner location on this record was determined by me and/or under my direct supervision and that this U.S. Public Land Survey Monument Record is correct and complete to the best of my knowledge and belief.

Dated this 10th day of June, 2019.

Aaron J. Austin
Aaron J. Austin, S-2922



⊕ = CORNER LOCATION

Grant County Coordinates:
NAD 83 (2011)
Northing: 497,691.40
Easting: 868,746.98

HISTORY OF CORNER ESTABLISHMENT:

Original corner was set in 1833 by Robert Clark.
Paul Chafer set a railroad spike on a plat filed in Book J Page 61, dated 2/18/1987.
Larry Austin found a railroad spike and prepared a Survey Monument Record dated 2/16/1995.

DESCRIPTION OF CORNER EVIDENCE FOUND: (b) (f) (g) (h)

I found the monument and one of Larry's witness corners. I set three additional witness corners after I verified the Monument's location with G.P.S. and E.D.M. methods.

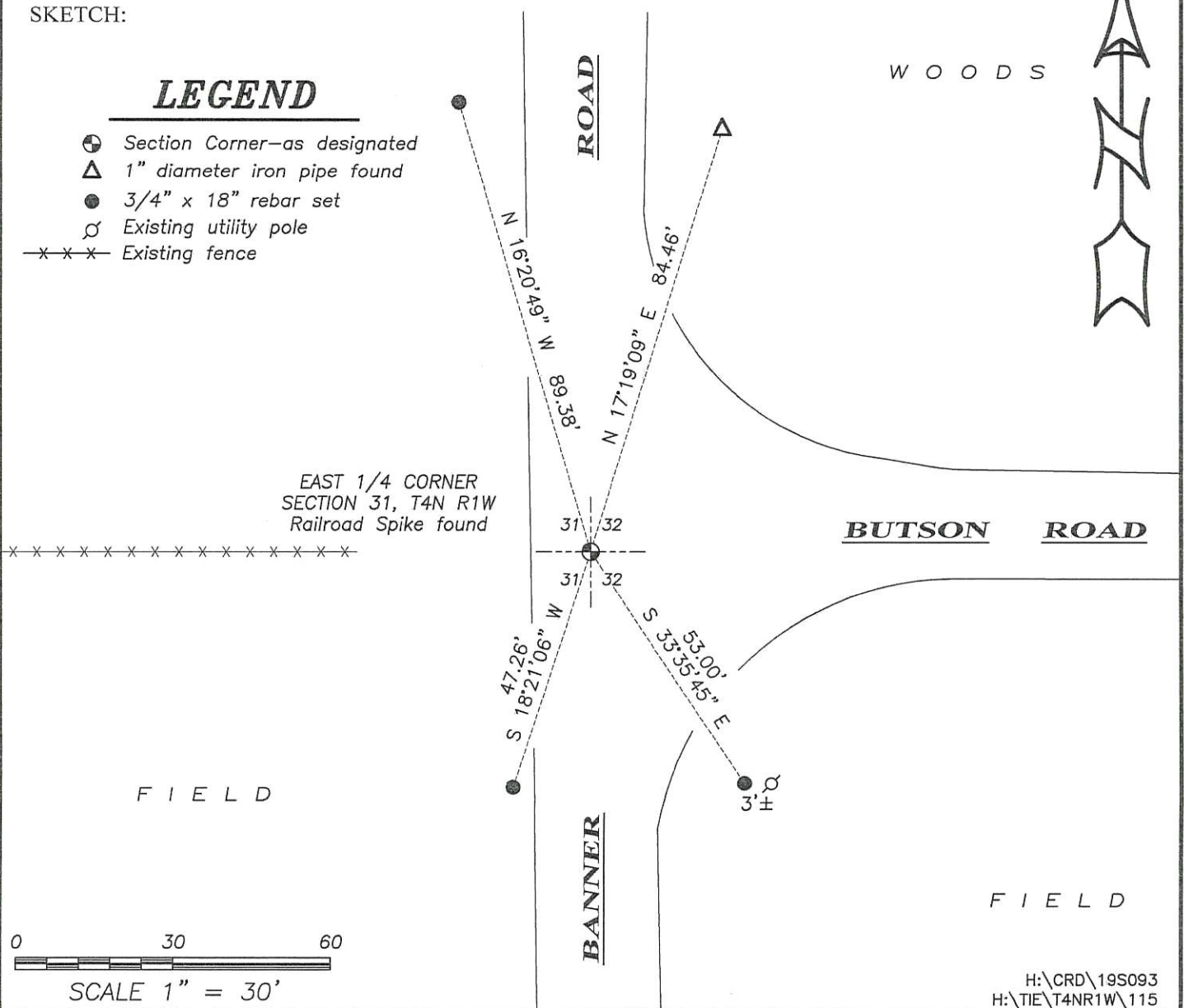
DESCRIPTION OF CORNER AND WITNESS MONUMENTS. references and accessories used to perpetuate the original or re-established location of this corner. (c) (d) (e)

Witnesses to corner location Shane Austin, Owen Austin.
Drawn by: Owen Austin

SKETCH:

LEGEND

- ⊕ Section Corner—as designated
- △ 1" diameter iron pipe found
- 3/4" x 18" rebar set
- ⊕ Existing utility pole
- x-x-x- Existing fence

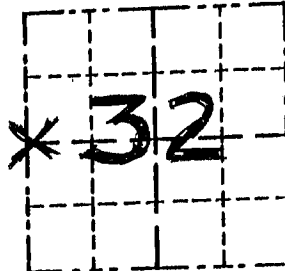


GRANT COUNTY

Survey Monument Record

CORNER NO. 115
 SECTION 32
 TOWN 4 N
 RANGE 1 W
W 1/4 COR

TYPE OF MONUMENT RAILROAD SPIKE FOUND
 STATE PLANE COORDINATES: N _____
 E _____
 ELEVATION — M.S.L. DATUM: _____
 THETA ANGLE: _____
 FIELD BOOK: _____
 PAGE _____



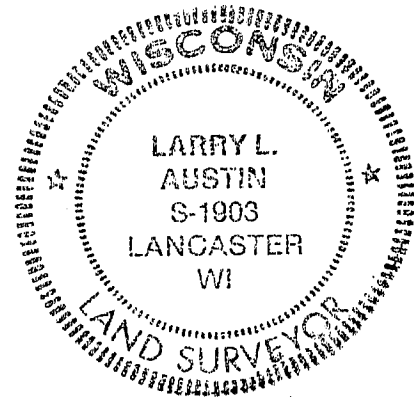
LOCATION
(Indicated by "X")

BASIS FOR MONUMENT LOCATION

(Use reverse side if necessary)

Show info such as: History of corner, with reference to Vol. and pg., dates, surveyor; exact description of monument replaced; if location computed, by taped or EDM traverse; landowner, remarks, etc.

SEAL:



ORIG. CORNER SET IN 1833
 BY CLARK; NO RECORD OF
 CORNER FD. SINCE ORIGINAL
 SURVEYS; FOUND EXISTING RR SPIKE AT
 OCCUPIED LOCATION & VERIFIED IT
 BY EDM TRAVERSE OF THE
 AREA.

CERTIFIED CORRECT

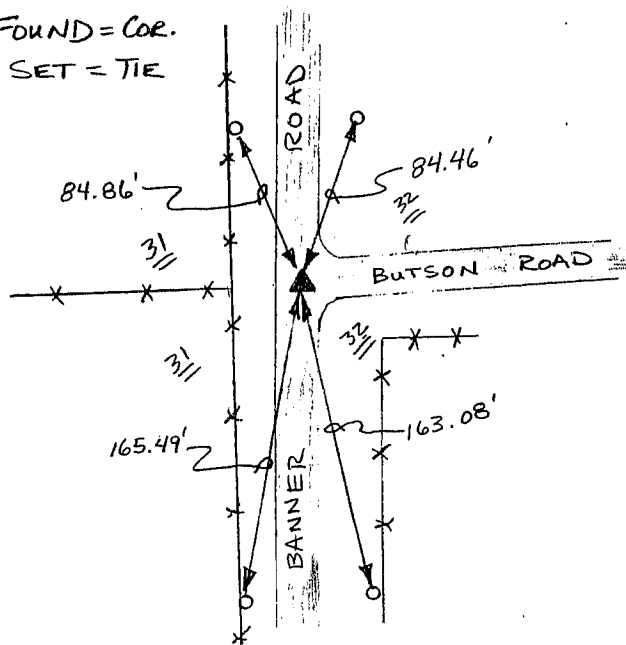
Larry L. Austin
 Registered Land Surveyor
 DATE: 2/16/95

TIE SKETCH

Show at least three (3) ties and monument

LEGEND

- ▲ RAILROAD SPIKE FOUND = COR.
- 1" x 12" IRON PIPE SET = TIE
- X — X — EXISTING FENCE



NO SCALE