

Remon
41114

GRANT COUNTY U.S. PUBLIC LAND SURVEY MONUMENT RECORD

INSTRUCTIONS: THIS RECORD SHALL SHOW THE LOCATION OF THE CORNER AND SHALL INCLUDE ALL OF THE FOLLOWING ELEMENTS (A THROUGH I).

(A) IDENTIFY THE CORNER AS REFERENCED TO THE U.S. PUBLIC LAND SURVEY SYSTEM

■ = CORNER MONUMENT RESTORED

WITNESSES TO CORNER LOCATION:

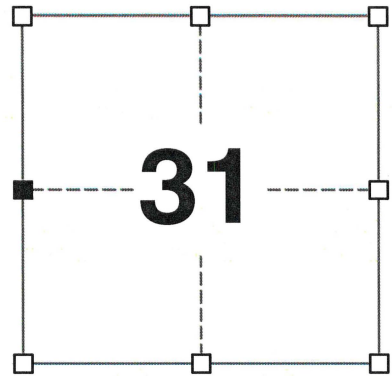
JAY P. ADAMS
TYLER D. ATKINSON

GEOGRAPHIC COORDINATES,
NAD 83 (2011) ADJUSTMENT:

LATITUDE: 42° 46' 35.07204"
LONGITUDE: 90° 32' 42.56629"

WISCONSIN COORDINATE REFERENCE SYSTEM (WISCRS),
GRANT COUNTY, NAD 83 (2011) ADJUSTMENT:

NORTHING: 497,661.118
EASTING: 863,425.200



SECTION 31
TOWNSHIP 4 NORTH, RANGE 1 WEST
TOWN OF LIMA

(B) DESCRIBE ANY RECORD EVIDENCE, MONUMENT EVIDENCE, OCCUPATIONAL EVIDENCE, TESTIMONIAL EVIDENCE OR ANY OTHER MATERIAL EVIDENCE YOU CONSIDERED, AND WHETHER THE MONUMENT WAS FOUND OR PLACED.

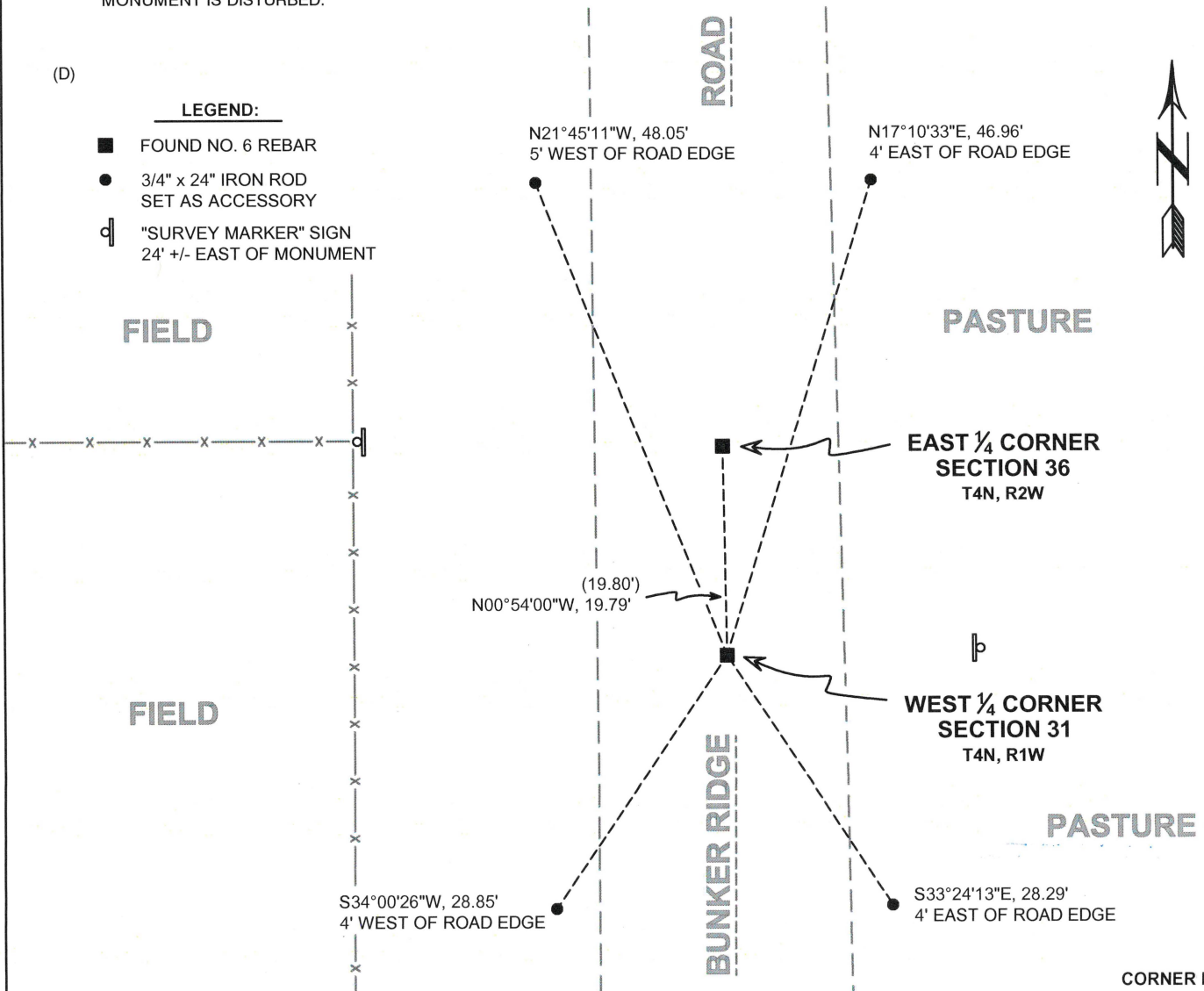
I COULD FIND NO MONUMENTS OR BEARING TREES FROM THE ORIGINAL GOVERNMENT SURVEY OR THE HISTORIC COUNTY SURVEYOR'S SUBSEQUENT RESURVEY. I RECOVERED THE NO. 6 REBAR SET BY LARRY AUSTIN. I ACCEPTED THIS LOCATION AS THE BEST AVAILABLE EVIDENCE OF THE ORIGINAL GOVERNMENT CORNER AND LEFT THIS MONUMENT IN PLACE.

(C) IN THE PLAN VIEW DRAWING BELOW, PROVIDE REFERENCE TIES TO AT LEAST 4 WITNESS MONUMENTS. WITNESS MONUMENTS SHALL BE MADE OF CONCRETE, NATURAL STONE, IRON, BEARING TREES OR ANY OTHER EQUALLY DURABLE MATERIAL. DEPICT THE RELEVANT MONUMENTS AND REFERENCE TIES WITH SUFFICIENT DETAIL TO ENABLE ACCURATE RELOCATION OF THE CORNER IF THE CORNER MONUMENT IS DISTURBED.

(D)

LEGEND:

- FOUND NO. 6 REBAR
- 3/4" x 24" IRON ROD SET AS ACCESSORY
- ⊔ "SURVEY MARKER" SIGN 24' +/- EAST OF MONUMENT



41114

(E) DESCRIBE ANY MATERIAL DISCREPANCY BETWEEN THE LOCATION OF THE CORNER AS RESTORED OR REESTABLISHED AND THE LOCATION OF THAT CORNER AS PREVIOUSLY RESTORED OR REESTABLISHED BY DISTANCE AND DIRECTION. SHOW THE DISCREPANCY ON THE PLAN VIEW DRAWING UNDER (D), ABOVE. SHOW THE DISTANCES BETWEEN THE CORNER AS PREVIOUSLY RESTORED OR REESTABLISHED AND (1) THE CORNER AS RESTORED OR REESTABLISHED, AND (2) TO AT LEAST 2 OF THE WITNESS MONUMENTS SHOWN ON THE DRAWING IN (D) ABOVE.

N/A

(F) WAS THE CORNER RESTORED THROUGH ACCEPTANCE OF (1) AN OBLITERATED EVIDENCE LOCATION, OR (2) A FOUND PERPETUATED LOCATION?

(2) A FOUND PERPETUATED LOCATION.

(G&H) WAS THE CORNER REESTABLISHED THROUGH LOST CORNER PROPORTIONATE METHODS? IF SO, SHOW THE METHOD, INCLUDING THE DIRECTIONS AND DISTANCES TO OTHER PUBLIC LAND SURVEY CORNERS USED AS EVIDENCE OR USED FOR PROPORTIONING IN DETERMINING THE CORNER LOCATION.

N/A

CORNER HISTORY

THIS CORNER WAS NOT ESTABLISHED BY THE ORIGINAL GOVERNMENT SURVEY.

IN A SURVEY DATED 6 JANUARY 1841, JOS. E. FREEMAN SET A POST AT THE CORNER AND ESTABLISHED TWO BEARING TREES.

IN A SURVEY PLAT DATED 23 APRIL 1997 AND SUBSEQUENT TIE SHEET DATED 20 DECEMBER 1997, LARRY AUSTIN SET A 3/4" X 24" IRON BAR AT THE CORNER.

IN A PLAT OF SURVEY LAST REVISED 31 DECEMBER 1999, LARRY AUSTIN REPORTED A NO. 6 REBAR AT THE CORNER.

IN A CERTIFIED SURVEY MAP DATED 27 MAY 2000, LARRY AUSTIN REPORTED A NO. 6 REBAR AT THE CORNER.

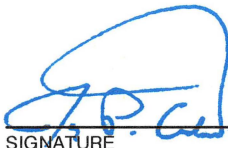
IN A CERTIFIED SURVEY MAP DATED 9 JULY 2004, LARRY AUSTIN REPORTED FINDING A NO. 6 REBAR AT THE CORNER.

IN A PLAT OF SURVEY DATED 8 DECEMBER 2015, AARON AUSTIN REPORTED FINDING A 3/4" REBAR AT THE CORNER.

IN A SITE MAP DATED 5 MARCH 2018, AARON AUSTIN REPORTED A 3/4" REBAR AT THE CORNER.

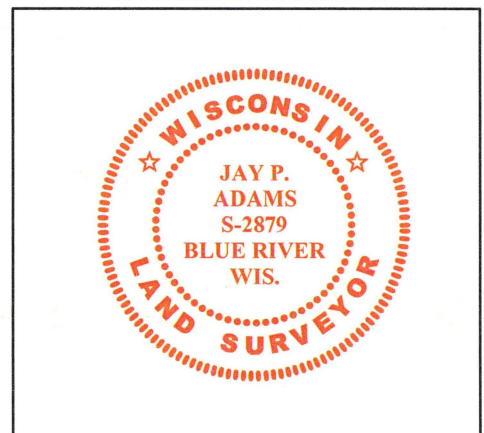
AFFIX LAND SURVEYOR SEAL

(I) I, JAY P. ADAMS, P.L.S. - 2879, CERTIFY THAT THE CORNER LOCATION SHOWN ON THIS RECORD WAS DETERMINED BY ME OR UNDER MY DIRECTION AND CONTROL AND THAT THIS U.S. PUBLIC LAND SURVEY MONUMENT RECORD IS CORRECT AND COMPLETE TO THE BEST OF MY KNOWLEDGE AND BELIEF.


SIGNATURE

14 FEBRUARY 2020

DATE



U.S. PUBLIC LAND SURVEY MONUMENT RECORD - GRANT COUNTY, WI

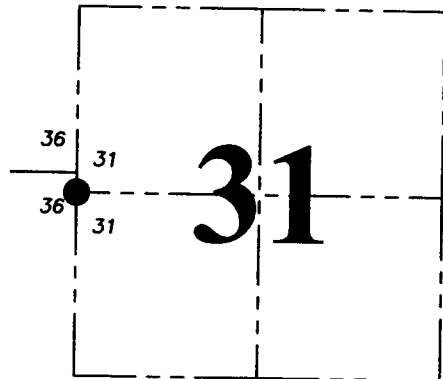
Section 31, Town 4 North Range 1 West, Town of Lima

CERTIFICATE:

I, Aaron J. Austin, Wisconsin Professional Land Surveyor, do hereby certify that the corner location on this record was determined by me and/or under my direct supervision and that this U.S. Public Land Survey Monument Record is correct and complete to the best of my knowledge and belief.

Dated this 8th day of December, 2015.

AUSTIN
LANCASTER
WI
Aaron J. Austin
2022



● = CORNER LOCATION

HISTORY OF CORNER ESTABLISHMENT:

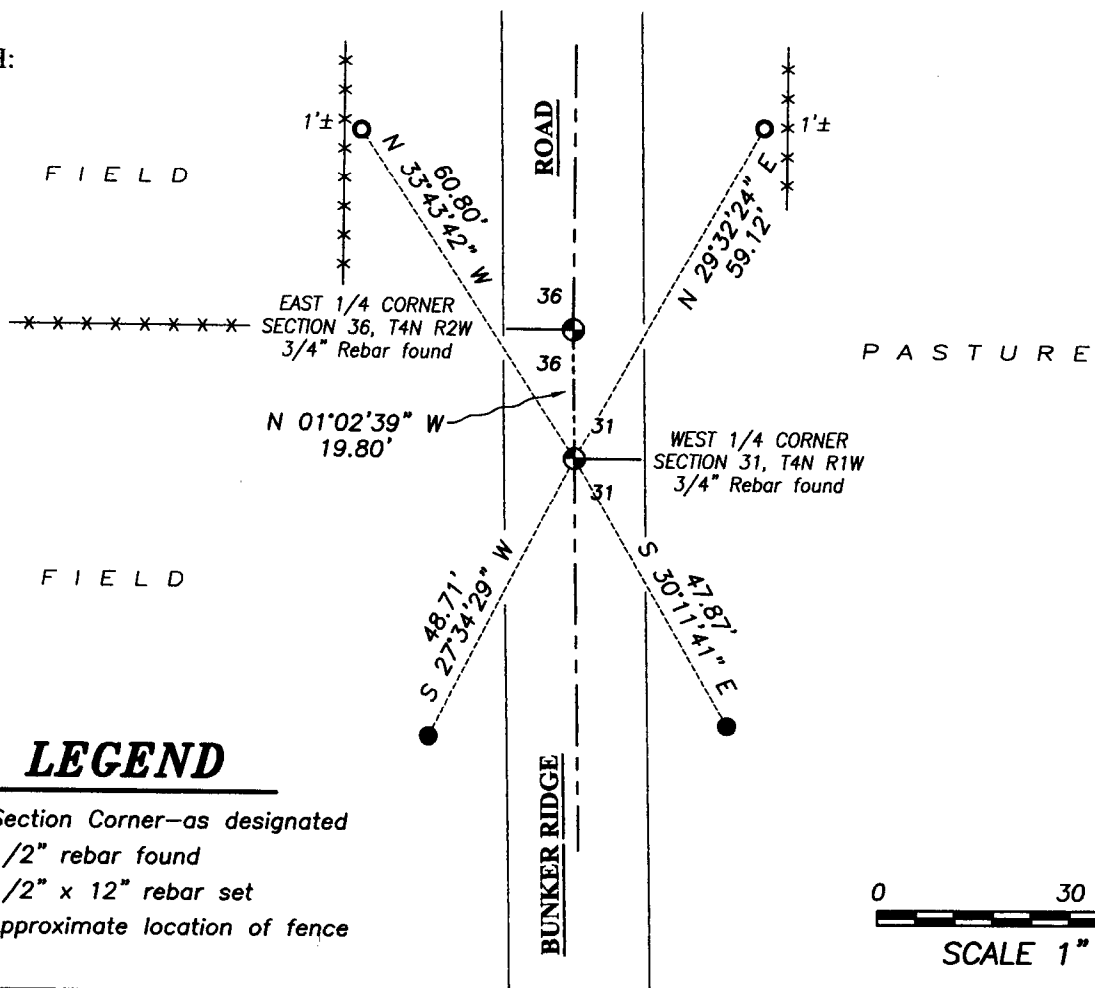
- 1840-Hugill tied to the corner on a Survey in Book A, Page 41.
- 1841-Freeman tied to the corner on a Survey in Book A, Page 81.
- 1841-Freemant tied to the corner on a Survey in Book A, Page 101.
- 1997-L. Austin prepared a Survey Monument Record for the corner.
- 1997-L. Austin reset the corner on a Survey filed in Book 1, Page 44.
- 1999-L. Austin tied to the corner on a Survey filed in Book 6, Page 97.
- 2000-L. Austin tied to the corner on C.S.M. No. 668.
- 2004-L. Austin tied to the corner on C.S.M. No. 1102.

DESCRIPTION OF CORNER EVIDENCE FOUND:

I found the 3/4" rebar as noted and tied by Larry Austin according to the Survey Monument Record for this corner. I was unable to locate 2 ties. I set two new witness corners after verifying this location with E.D.M. and G.P.S. methods.

DESCRIPTION OF CORNER AND WITNESS MONUMENTS, references and accessories used to perpetuate the original or re-established location of this corner. Witnesses to corner location Shane Austin.

SKETCH:



LEGEND

- Section Corner—as designated
- 1/2" rebar found
- 1/2" x 12" rebar set
- *- Approximate location of fence



Austin Engineering LLC
austinengineeringllc.com

4211 HWY 81 E, LANCASTER, WI 53813
PHONE: 608-723-6363 FAX: 608-723-6702

JOB NO: 15S226
H:\CRD\15s226
H:\TIE\T4NR1W\114

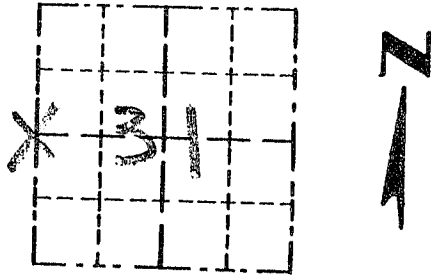
FIELDBOOK: TDSR
DRAWN BY: AJ AUSTIN
CREW: SW AUSTIN

Survey Monument Record

TYPE OF MONUMENT 3/4" X 24" IRON BAR
SET

CORNER NO. 114
 SECTION 31
 TOWN 4N
 RANGE 12W

FIELD BOOK: 97-08
 PAGE 3



LOCATION
 (Indicated by "X")

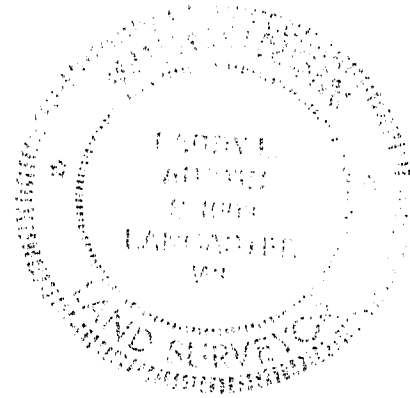


BASIS FOR MONUMENT LOCATION

(Use reverse side if necessary)

Show info such as: History of corner, with reference to Vol. and pg., dates, surveyor; exact description of monument replaced; if location computed, by taped or EDM traverse; landowner, remarks, etc.

SEAL:



CORNER SET IN 1833 BY CLARK. NO RECORD FOUND SINCE ORIGINAL SURVEY; CORNER WAS SET AT PROPORTIONATE OFFSET FROM EXISTING FENCE WEST & ON THE EAST LINE OF SEC. 36 T4N R2W; VERIFIED THIS LOCATION BY EDM TRAVERSE OF THE AREA.

CERTIFIED CORRECT

Henry R. Rust
 Registered Land Surveyor

DATE: 12/20/97

TIE SKETCH

Show at least three (3) ties and monument

LEGEND

- ⊕ 3/4" X 24" IRON BAR SET
- 1/2" X 15" IRON BAR SET
- XX EXISTING FENCE 60.88'

