

REMON
41113

GRANT COUNTY U.S. PUBLIC LAND SURVEY MONUMENT RECORD

INSTRUCTIONS: THIS RECORD SHALL SHOW THE LOCATION OF THE CORNER AND SHALL INCLUDE ALL OF THE FOLLOWING ELEMENTS (A THROUGH I).

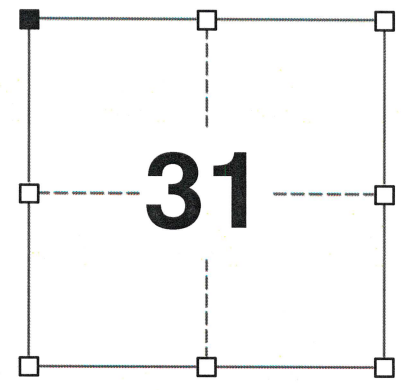
(A) IDENTIFY THE CORNER AS REFERENCED TO THE U.S. PUBLIC LAND SURVEY SYSTEM

■ = CORNER MONUMENT RESTORED

WITNESSES TO CORNER LOCATION:
JAY P. ADAMS
TYLER D. ATKINSON

GEOGRAPHIC COORDINATES,
NAD 83 (2011) ADJUSTMENT:
LATITUDE: 42° 47' 01.40643"
LONGITUDE: 90° 32' 43.11057"

WISCONSIN COORDINATE REFERENCE SYSTEM (WISCRS),
GRANT COUNTY, NAD 83 (2011) ADJUSTMENT:
NORTHING: 500,327.174
EASTING: 863,376.557



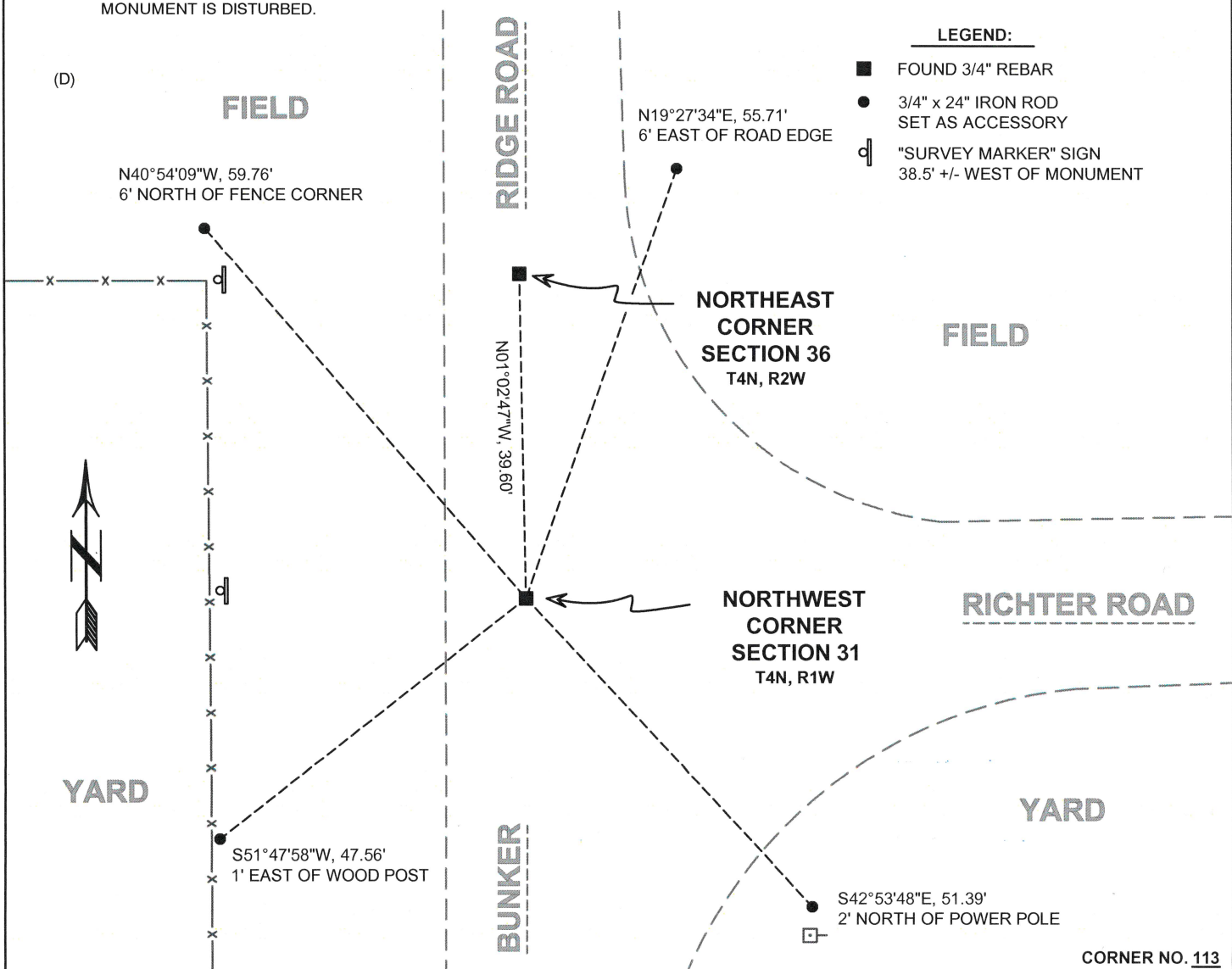
SECTION 31
TOWNSHIP 4 NORTH, RANGE 1 WEST
TOWN OF LIMA

(B) DESCRIBE ANY RECORD EVIDENCE, MONUMENT EVIDENCE, OCCUPATIONAL EVIDENCE, TESTIMONIAL EVIDENCE OR ANY OTHER MATERIAL EVIDENCE YOU CONSIDERED, AND WHETHER THE MONUMENT WAS FOUND OR PLACED.

I COULD FIND NO MONUMENTS OR BEARING TREES FROM THE ORIGINAL GOVERNMENT SURVEY OR THE HISTORIC COUNTY SURVEYOR'S SUBSEQUENT RESURVEYS. I RECOVERED THE 3/4" REBAR SET BY LARRY AUSTIN. I ACCEPTED THIS LOCATION AS THE BEST AVAILABLE EVIDENCE OF THE ORIGINAL GOVERNMENT CORNER AND LEFT THIS MONUMENT IN PLACE.

(C) IN THE PLAN VIEW DRAWING BELOW, PROVIDE REFERENCE TIES TO AT LEAST 4 WITNESS MONUMENTS. WITNESS MONUMENTS SHALL BE MADE OF CONCRETE, NATURAL STONE, IRON, BEARING TREES OR ANY OTHER EQUALLY DURABLE MATERIAL. DEPICT THE RELEVANT MONUMENTS AND REFERENCE TIES WITH SUFFICIENT DETAIL TO ENABLE ACCURATE RELOCATION OF THE CORNER IF THE CORNER MONUMENT IS DISTURBED.

(D)



LEGEND:
 ■ FOUND 3/4" REBAR
 ● 3/4" x 24" IRON ROD SET AS ACCESSORY
 □ "SURVEY MARKER" SIGN 38.5' +/- WEST OF MONUMENT

CORNER NO. 113

41113

(E) DESCRIBE ANY MATERIAL DISCREPANCY BETWEEN THE LOCATION OF THE CORNER AS RESTORED OR REESTABLISHED AND THE LOCATION OF THAT CORNER AS PREVIOUSLY RESTORED OR REESTABLISHED BY DISTANCE AND DIRECTION. SHOW THE DISCREPANCY ON THE PLAN VIEW DRAWING UNDER (D), ABOVE. SHOW THE DISTANCES BETWEEN THE CORNER AS PREVIOUSLY RESTORED OR REESTABLISHED AND (1) THE CORNER AS RESTORED OR REESTABLISHED, AND (2) TO AT LEAST 2 OF THE WITNESS MONUMENTS SHOWN ON THE DRAWING IN (D) ABOVE.

N/A

(F) WAS THE CORNER RESTORED THROUGH ACCEPTANCE OF (1) AN OBLITERATED EVIDENCE LOCATION, OR (2) A FOUND PERPETUATED LOCATION?

(2) A FOUND PERPETUATED LOCATION.

(G&H) WAS THE CORNER REESTABLISHED THROUGH LOST CORNER PROPORTIONATE METHODS? IF SO, SHOW THE METHOD, INCLUDING THE DIRECTIONS AND DISTANCES TO OTHER PUBLIC LAND SURVEY CORNERS USED AS EVIDENCE OR USED FOR PROPORTIONING IN DETERMINING THE CORNER LOCATION.

N/A

CORNER HISTORY

THE ORIGINAL GOVERNMENT CORNER WAS ESTABLISHED BY ROBERT CLARK JR. IN THE FIRST QUARTER OF 1833 WHERE HE SET A POST 60 LINKS SOUTH OF THE NORTHEAST CORNER OF SECTION 36, T4N, R2W.

IN A SURVEY DATED 6 JANUARY 1841, JOS. E. FREEMAN VISITED THE CORNER.

IN SURVEYS DATED 16 MARCH 1844, SAM WILTSE SET A POST 63 LINKS SOUTH OF THE SENIOR CORNER.

IN A SURVEY PLAT DATED 23 APRIL 1997 AND SUBSEQUENT TIE SHEET DATED 20 DECEMBER 1997, LARRY AUSTIN SET A 3/4" X 24" REBAR AT THE CORNER.

IN A CERTIFIED SURVEY MAP DATED 9 JULY 2004, LARRY AUSTIN FOUND A NO. 6 REBAR AT THE CORNER.

IN A CERTIFIED SURVEY MAP DATED 3 MAY 2006, LARRY AUSTIN FOUND A NO. 6 REBAR AT THE CORNER.

IN A SITE MAP DATED 5 MARCH 2018, AARON AUSTIN FOUND A 3/4" REBAR AT THE CORNER.

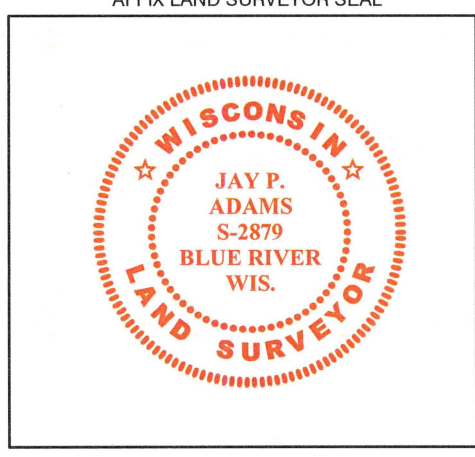
AFFIX LAND SURVEYOR SEAL

(I) I, JAY P. ADAMS, P.L.S. - 2879, CERTIFY THAT THE CORNER LOCATION SHOWN ON THIS RECORD WAS DETERMINED BY ME OR UNDER MY DIRECTION AND CONTROL AND THAT THIS U.S. PUBLIC LAND SURVEY MONUMENT RECORD IS CORRECT AND COMPLETE TO THE BEST OF MY KNOWLEDGE AND BELIEF.

SIGNATURE

13 FEBRUARY 2020

DATE

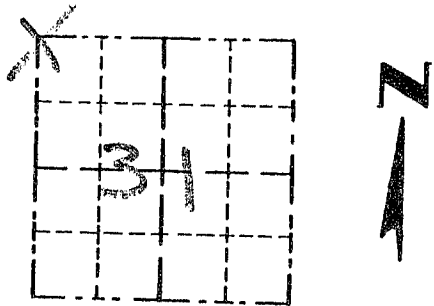


Survey Monument Record

TYPE OF MONUMENT 3/4" X 24" IRON BAR SET.

CORNER NO. 113
 SECTION 31
 TOWN 4N
 RANGE 1W

FIELD BOOK: 97-08
 PAGE (3)



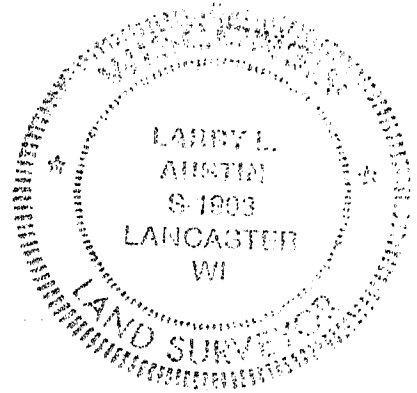
LOCATION
 (Indicated by "X")

BASIS FOR MONUMENT LOCATION

(Use reverse side if necessary)

Show info such as: History of corner, with reference to Vol. and pg., dates, surveyor; exact description of monument replaced; if location computed, by taped or EDM traverse; landowner, remarks, etc.

SEAL:



CORNER SET IN 1833 BY CLARK. NO RECORD FOUND SINCE ORIGINAL SURVEY; CORNER WAS SET AT THE RECORDED OFFSET FROM EXISTING FENCE WEST AND ON THE EAST LINE OF SECTION 36, T4N, R2W; VERIFIED THIS LOCATION BY EDM TRAVERSE OF THE AREA

CERTIFIED CORRECT

Larry L. Austin
 Registered Land Surveyor

DATE: 12/20/97

TIE SKETCH

Show at least three (3) ties and monument

- LEGEND
- 3/4" X 24" IRON BAR SET
 - 1/2" X 15" IRON BAR SET
 - XX EXISTING FENCE

