

Remon

41112

GRANT COUNTY U.S. PUBLIC LAND SURVEY MONUMENT RECORD

INSTRUCTIONS: THIS RECORD SHALL SHOW THE LOCATION OF THE CORNER AND SHALL INCLUDE ALL OF THE FOLLOWING ELEMENTS (A THROUGH I).

(A) IDENTIFY THE CORNER AS REFERENCED TO THE U.S. PUBLIC LAND SURVEY SYSTEM

■ = CORNER MONUMENT RESTORED

WITNESSES TO CORNER LOCATION:

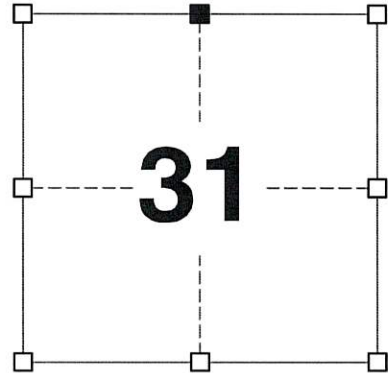
JAY P. ADAMS
TYLER D. ATKINSON

GEOGRAPHIC COORDINATES,
NAD 83 (2011) ADJUSTMENT:

LATITUDE: 42° 47' 01.37751"
LONGITUDE: 90° 32' 07.30810"

WISCONSIN COORDINATE REFERENCE SYSTEM (WISCRS),
GRANT COUNTY, NAD 83 (2011) ADJUSTMENT:

NORTHING: 500,332.466
EASTING: 866,046.518



SECTION 31
TOWNSHIP 4 NORTH, RANGE 1 WEST
TOWN OF LIMA

(B) DESCRIBE ANY RECORD EVIDENCE, MONUMENT EVIDENCE, OCCUPATIONAL EVIDENCE, TESTIMONIAL EVIDENCE OR ANY OTHER MATERIAL EVIDENCE YOU CONSIDERED, AND WHETHER THE MONUMENT WAS FOUND OR PLACED.

I COULD FIND NO MONUMENTS FROM THE ORIGINAL GOVERNMENT SURVEY OR THE HISTORIC COUNTY SURVEYOR'S SUBSEQUENT RESURVEYS. I RECOVERED THE 1" REBAR REPORTED BY BOWDEN. I ACCEPTED THIS LOCATION AS THE BEST AVAILABLE EVIDENCE OF THE ORIGINAL GOVERNMENT CORNER AND LEFT IT IN PLACE.

(C) IN THE PLAN VIEW DRAWING BELOW, PROVIDE REFERENCE TIES TO AT LEAST 4 WITNESS MONUMENTS. WITNESS MONUMENTS SHALL BE MADE OF CONCRETE, NATURAL STONE, IRON, BEARING TREES OR ANY OTHER EQUALLY DURABLE MATERIAL. DEPICT THE RELEVANT MONUMENTS AND REFERENCE TIES WITH SUFFICIENT DETAIL TO ENABLE ACCURATE RELOCATION OF THE CORNER IF THE CORNER MONUMENT IS DISTURBED.

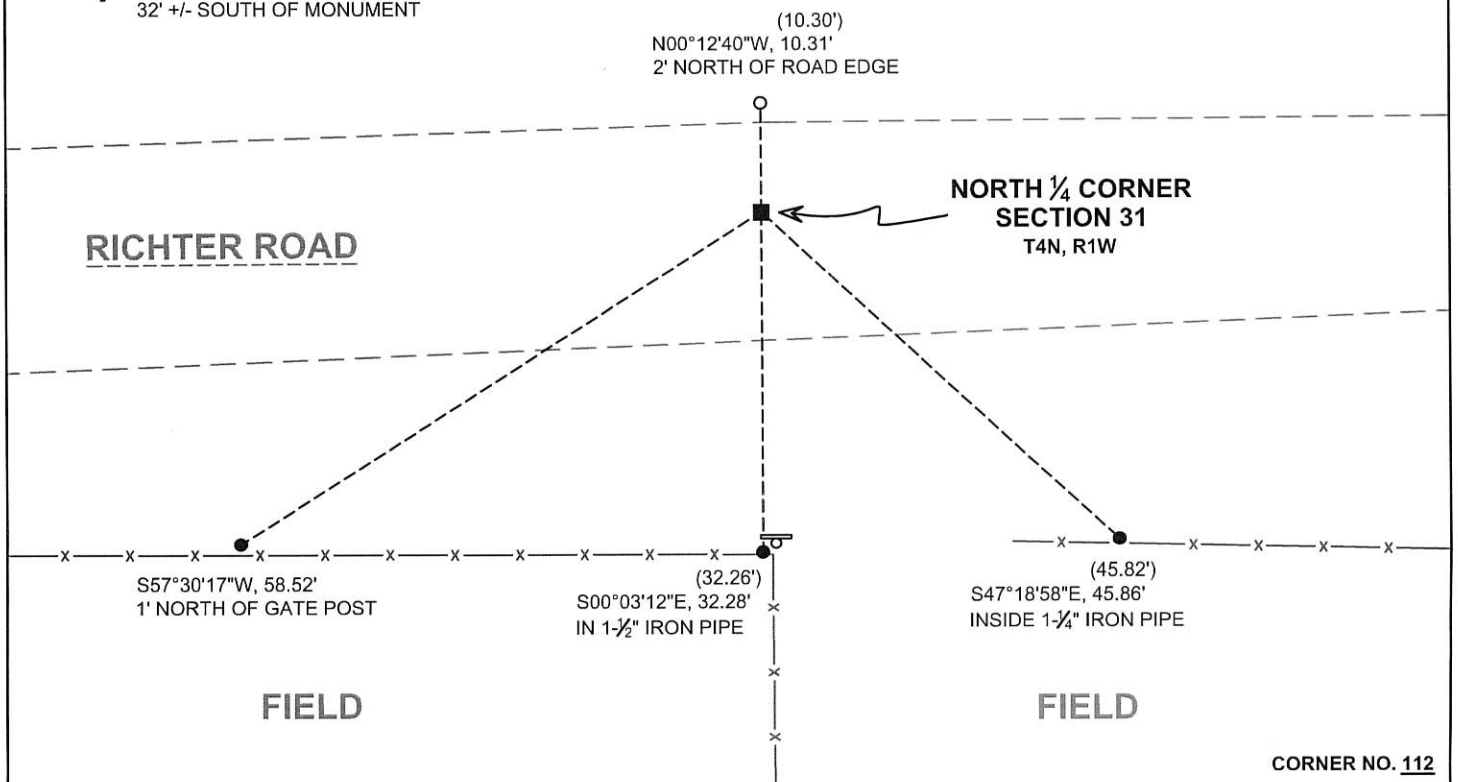
(D)

LEGEND:

- FOUND 1" REBAR
- 3/4" x 24" IRON ROD SET AS ACCESSORY
- 1" IRON PIPE FOUND AS ACCESSORY
- ⊥ "SURVEY MARKER" SIGN 32' +/- SOUTH OF MONUMENT

YARD

YARD



(E) DESCRIBE ANY MATERIAL DISCREPANCY BETWEEN THE LOCATION OF THE CORNER AS RESTORED OR REESTABLISHED AND THE LOCATION OF THAT CORNER AS PREVIOUSLY RESTORED OR REESTABLISHED BY DISTANCE AND DIRECTION. SHOW THE DISCREPANCY ON THE PLAN VIEW DRAWING UNDER (D), ABOVE. SHOW THE DISTANCES BETWEEN THE CORNER AS PREVIOUSLY RESTORED OR REESTABLISHED AND (1) THE CORNER AS RESTORED OR REESTABLISHED, AND (2) TO AT LEAST 2 OF THE WITNESS MONUMENTS SHOWN ON THE DRAWING IN (D) ABOVE.

N/A

(F) WAS THE CORNER RESTORED THROUGH ACCEPTANCE OF (1) AN OBLITERATED EVIDENCE LOCATION, OR (2) A FOUND PERPETUATED LOCATION?

(2) A FOUND PERPETUATED LOCATION.

(G&H) WAS THE CORNER REESTABLISHED THROUGH LOST CORNER PROPORTIONATE METHODS? IF SO, SHOW THE METHOD, INCLUDING THE DIRECTIONS AND DISTANCES TO OTHER PUBLIC LAND SURVEY CORNERS USED AS EVIDENCE OR USED FOR PROPORTIONING IN DETERMINING THE CORNER LOCATION.

N/A

CORNER HISTORY

THE ORIGINAL GOVERNMENT CORNER WAS ESTABLISHED BY ROBERT CLARK JR. IN THE FIRST QUARTER OF 1833.

IN A SURVEY DATED 6 JANUARY 1841, JOS. E. FREEMAN FOUND THE ORIGINAL CORNER.

IN A SURVEY DATED 10 JANUARY 1842, JOS. E. FREEMAN FOUND THE ORIGINAL CORNER.

IN A SURVEY DATED 16 MARCH 1844, SAM WILTSE VISITED THE CORNER.

IN A SURVEY DATED 1850, GEORGE STUNTZ VISITED THE CORNER.

IN A PLAT OF SURVEY AND SUBSEQUENT TIE SHEET DATED DECEMBER 1985, BRUCE BOWDEN REPORTED SETTING A 1" X 30" ROUND IRON PIN AT THE CORNER.

IN A SURVEY PLAT DATED 7 MARCH 1995, LARRY AUSTIN REPORTED FINDING A 3/4" BAR AT THE CORNER.

IN A SURVEY PLAT DATED 23 APRIL 1997, LARRY AUSTIN REPORTED FINDING A 1" SOLID PIN AT THE CORNER.

IN A CERTIFIED SURVEY MAP DATED 5 JULY 2004, LARRY AUSTIN REPORTED FINDING A NO. 8 REBAR AT THE CORNER.

IN A CERTIFIED SURVEY MAP DATED 3 MAY 2006 LARRY AUSTIN REPORTED FINDING A NO. 8 REBAR AT THE CORNER.

IN A CERTIFIED SURVEY MAP DATED 22 MAY 2006, LARRY AUSTIN REPORTED FINDING A NO. 8 REBAR AT THE CORNER.

IN A PLAT OF SURVEY DATED 1 MARCH 2013, AARON AUSTIN REPORTED FINDING A NO. 10 REBAR AT THE CORNER.

IN A PLAT OF SURVEY DATED 11 DECEMBER 2017, AARON AUSTIN REPORTED FINDING A 1" REBAR AT THE CORNER.

(I) I, JAY P. ADAMS, P.L.S. - 2879, CERTIFY THAT THE CORNER LOCATION SHOWN ON THIS RECORD WAS DETERMINED BY ME OR UNDER MY DIRECTION AND CONTROL AND THAT THIS U.S. PUBLIC LAND SURVEY MONUMENT RECORD IS CORRECT AND COMPLETE TO THE BEST OF MY KNOWLEDGE AND BELIEF.

SIGNATURE

24 SEPTEMBER 2022

DATE

AFFIX LAND SURVEYOR SEAL



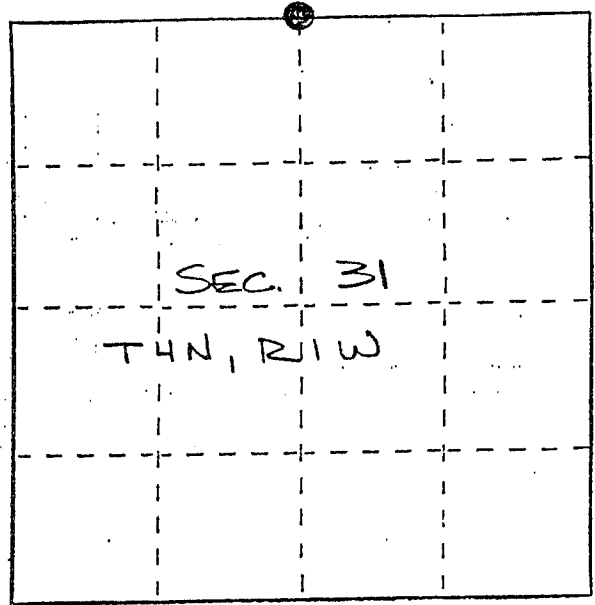
Lima Twp

U. S. PUBLIC LAND SURVEY MONUMENT RECORD

INSTRUCTIONS: This record shall show the location of the corner and shall include all of the following nine elements (a through i).

- (a) Identify the corner by reference to the U.S. public land survey system.
- = Corner monument restored.

N 1/4 CORNER SEC. 31,
T4N, R1W, LIMA TWP,
GRANT COUNTY, WISC.

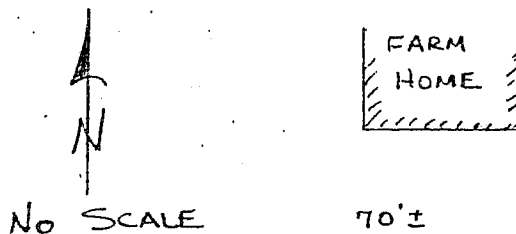


- (b) Describe any record evidence, monument evidence, occupational evidence, testimonial evidence or any other material evidence you considered, and whether the monument was found or placed.

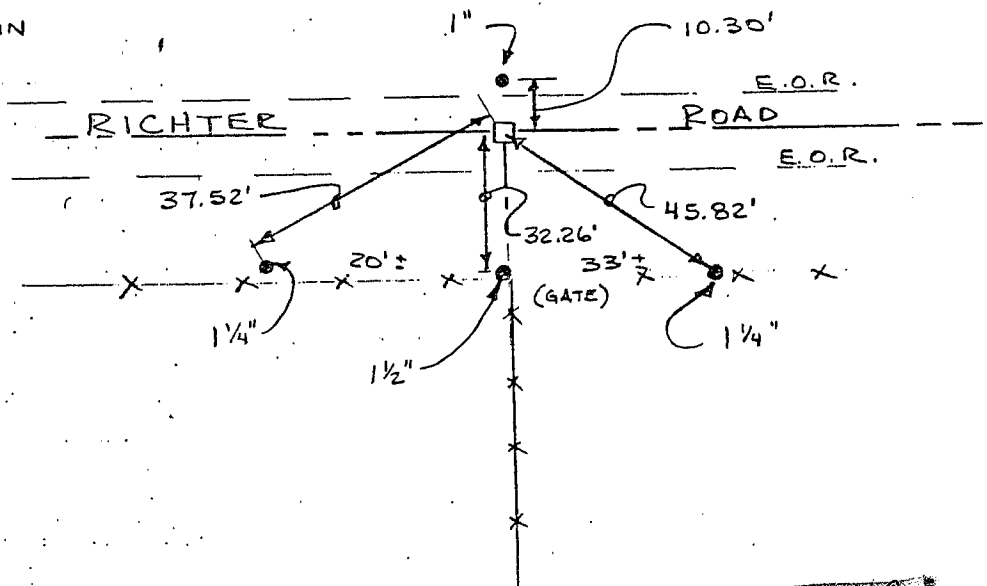
MONUMENT SET FROM EXISTING PHYSICAL EVIDENCE & VERIFIED BY AN EDM TRAVERSE OF THE AREA; NO OTHER RECORD SINCE ORIGINAL GOVERNMENT SURVEY.

- (c) In the plan view drawing below, provide reference ties to at least 4 witness monuments, or, if the location is within a municipality, to at least 2 witness monuments. (Witness monuments shall be made of concrete, natural stone, iron or other equally durable material.) Describe witness monuments.

- (d) Show a plan view drawing depicting the relevant monuments and reference ties which is sufficient in detail to enable accurate relocation of the corner monument if the corner monument is disturbed. Indicate north.



- 1" X 30" ROUND-SOLID PIN
- IRON PIPE
- XX EXIST. FENCE



RECEIVED

FEB 26 1986

P. 112

(e) Describe any material discrepancy between the location of the corner as restored or reestablished and the location of that corner as previously restored or reestablished by distance and direction. Show the discrepancy on the plan view drawing under (c) above. Show the distances between the corner as previously restored or reestablished and (1) the corner as restored or reestablished, and (2) to at least 2 of the witness monuments shown on the drawing in (d), above.

NONE

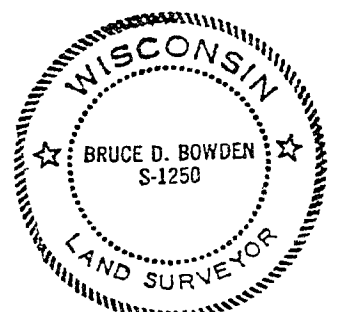
(f) Was the corner restored through acceptance of (1) an obliterated evidence location, or, (2) a found perpetuated location?

AN OBLITERATED EVIDENCE LOCATION

(g&h) Was the corner reestablished through lost corner proportionate methods? If so, show the method, including the directions and distances to other public land survey corners used as evidence or used for proportioning in determining the corner location?

No.

Affix Land Surveyor Seal



(i) I, Bruce D. Bowden
(type or print name) certify that the corner location shown on this record was determined by me or under my direction and control and that this U.S. Public Land Survey Monument Record is correct and complete to the best of my knowledge and belief.

Bruce D. Bowden
Signature

Dec 14, 1985
Date