

**GRANT COUNTY
U.S. PUBLIC LAND SURVEY MONUMENT RECORD**

INSTRUCTIONS: THIS RECORD SHALL SHOW THE LOCATION OF THE CORNER AND SHALL INCLUDE ALL OF THE FOLLOWING ELEMENTS (A THROUGH I).

(A) IDENTIFY THE CORNER AS REFERENCED TO THE U.S. PUBLIC LAND SURVEY SYSTEM

■ = CORNER MONUMENT RESTORED

WITNESSES TO CORNER LOCATION:

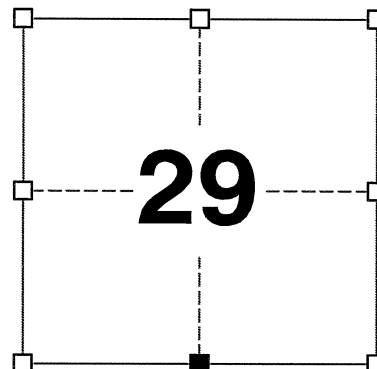
REID T. SHOWERS
PAIGE O. JELINEK

GEOGRAPHIC COORDINATES,
NAD 83 (2011) ADJUSTMENT:

LATITUDE: 42° 47' 01.55658"
LONGITUDE: 90° 30' 55.87265"

WISCONSIN COORDINATE REFERENCE SYSTEM (WISCRS),
GRANT COUNTY, NAD 83 (2011) ADJUSTMENT:

NORTHING: 500,367.935
EASTING: 871,373.723



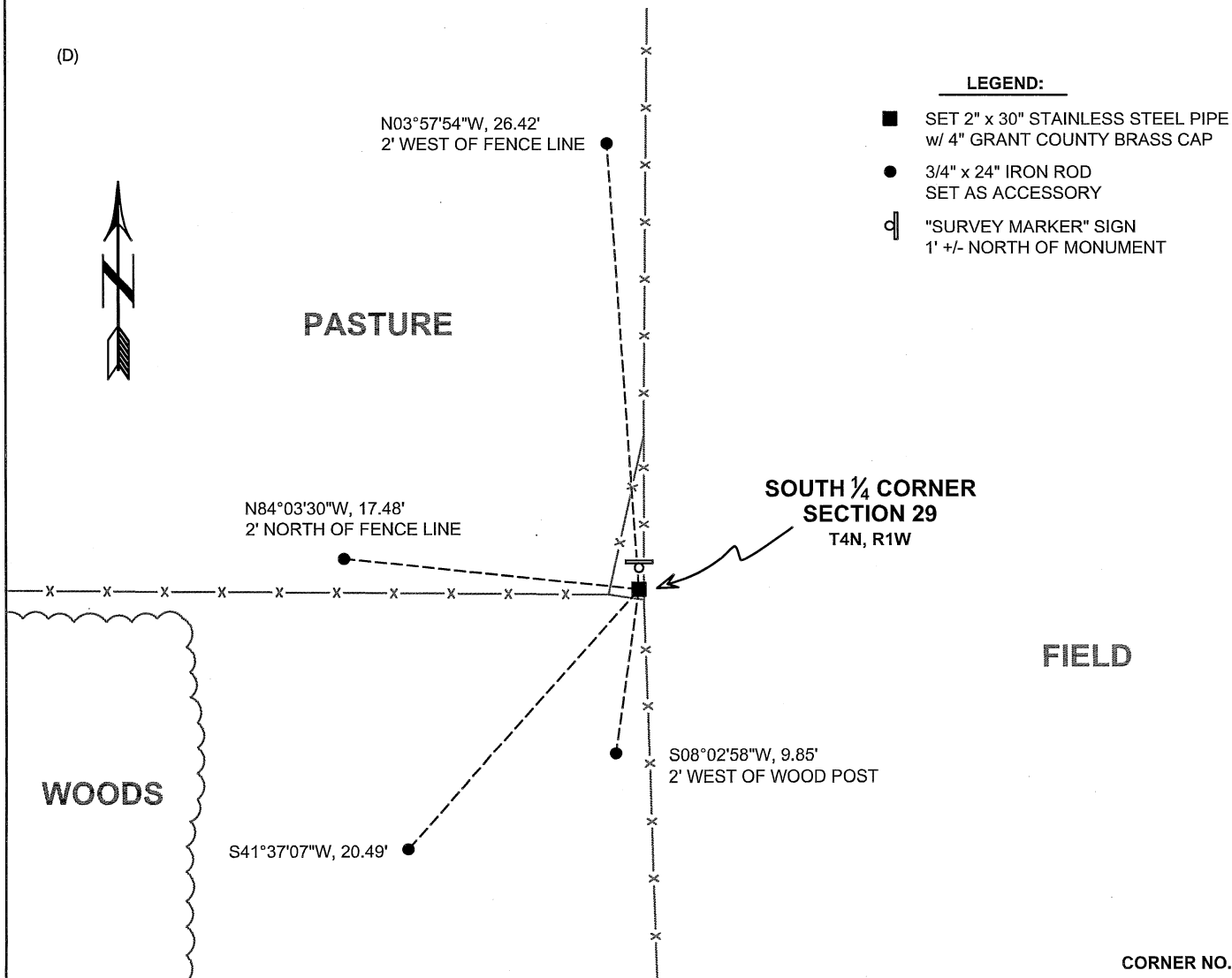
SECTION 29
TOWNSHIP 4 NORTH, RANGE 1 WEST
TOWN OF LIMA

(B) DESCRIBE ANY RECORD EVIDENCE, MONUMENT EVIDENCE, OCCUPATIONAL EVIDENCE, TESTIMONIAL EVIDENCE OR ANY OTHER MATERIAL EVIDENCE YOU CONSIDERED, AND WHETHER THE MONUMENT WAS FOUND OR PLACED.

I COULD FIND NO MONUMENTS OR BEARING TREES FROM THE ORIGINAL GOVERNMENT SURVEY OR THE HISTORIC COUNTY SURVEYOR'S SUBSEQUENT RESURVEYS. I RECOVERED A GRANT COUNTY ALUMINUM MONUMENT REPORTED BY LARRY AUSTIN. I ACCEPTED THIS LOCATION AS THE BEST AVAILABLE EVIDENCE OF THE ORIGINAL GOVERNMENT CORNER AND REMONUMENTED IT WITH A 2" x 30" STAINLESS STEEL PIPE WITH A 4" GRANT COUNTY BRASS CAP.

(C) IN THE PLAN VIEW DRAWING BELOW, PROVIDE REFERENCE TIES TO AT LEAST 4 WITNESS MONUMENTS. WITNESS MONUMENTS SHALL BE MADE OF CONCRETE, NATURAL STONE, IRON, BEARING TREES OR ANY OTHER EQUALLY DURABLE MATERIAL. DEPICT THE RELEVANT MONUMENTS AND REFERENCE TIES WITH SUFFICIENT DETAIL TO ENABLE ACCURATE RELOCATION OF THE CORNER IF THE CORNER MONUMENT IS DISTURBED.

(D)



LEGEND:

- SET 2" x 30" STAINLESS STEEL PIPE w/ 4" GRANT COUNTY BRASS CAP
- 3/4" x 24" IRON ROD SET AS ACCESSORY
- ⊞ "SURVEY MARKER" SIGN 1' +/- NORTH OF MONUMENT

41110

(E) DESCRIBE ANY MATERIAL DISCREPANCY BETWEEN THE LOCATION OF THE CORNER AS RESTORED OR REESTABLISHED AND THE LOCATION OF THAT CORNER AS PREVIOUSLY RESTORED OR REESTABLISHED BY DISTANCE AND DIRECTION. SHOW THE DISCREPANCY ON THE PLAN VIEW DRAWING UNDER (D), ABOVE. SHOW THE DISTANCES BETWEEN THE CORNER AS PREVIOUSLY RESTORED OR REESTABLISHED AND (1) THE CORNER AS RESTORED OR REESTABLISHED, AND (2) TO AT LEAST 2 OF THE WITNESS MONUMENTS SHOWN ON THE DRAWING IN (D) ABOVE.

N/A

(F) WAS THE CORNER RESTORED THROUGH ACCEPTANCE OF (1) AN OBLITERATED EVIDENCE LOCATION, OR (2) A FOUND PERPETUATED LOCATION?

(2) A FOUND PERPETUATED LOCATION.

(G&H) WAS THE CORNER REESTABLISHED THROUGH LOST CORNER PROPORTIONATE METHODS? IF SO, SHOW THE METHOD, INCLUDING THE DIRECTIONS AND DISTANCES TO OTHER PUBLIC LAND SURVEY CORNERS USED AS EVIDENCE OR USED FOR PROPORTIONING IN DETERMINING THE CORNER LOCATION.

N/A

CORNER HISTORY

THE ORIGINAL GOVERNMENT CORNER WAS ESTABLISHED BY ROBERT CLARK JR. IN THE FIRST QUARTER OF 1833.

IN SURVEYS DATED 10 DECEMBER 1840 AND 11 DECEMBER 1840, JOS. E. FREEMAN FOUND THE ORIGINAL CORNER.

IN A SURVEY PLAT DATED 21 NOVEMBER 1988 AND SUBSEQUENT TIE SHEET DATED 30 NOVEMBER 1988, LARRY AUSTIN REPORTED SETTING A GRANT COUNTY ALUMINUM MONUMENT AT THE CORNER.

IN A PLAT OF SURVEY DATED 23 OCTOBER 2003, LARRY AUSTIN REPORTED FINDING A GRANT COUNTY ALUMINUM MONUMENT AT THE CORNER.

IN A PLAT OF SURVEY DATED 1 MAY 2009, LARRY AUSTIN REPORTED FINDING A GRANT COUNTY ALUMINUM MONUMENT AT THE CORNER.

IN A PLAT OF SURVEY DATED 4 MAY 2017, AARON AUSTIN REPORTED FINDING A GRANT COUNTY ALUMINUM MONUMENT AT THE CORNER.

IN A PLAT OF SURVEY DATED 1 JUNE 2017, AARON AUSTIN REPORTED FINDING A GRANT COUNTY ALUMINUM MONUMENT AT THE CORNER.

IN A PLAT OF SURVEY LAST REVISED 8 AUGUST 2017, AARON AUSTIN REPORTED FINDING A GRANT COUNTY ALUMINUM MONUMENT AT THE CORNER.

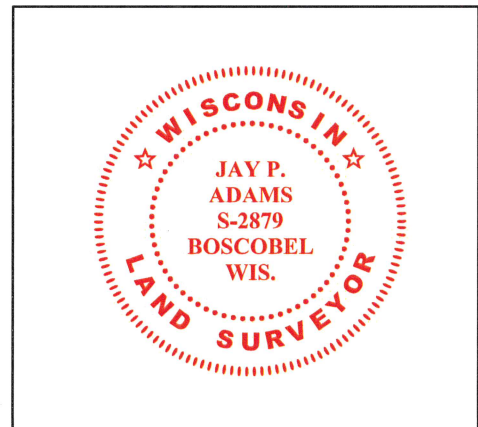
(I) I, JAY P. ADAMS, P.L.S. - 2879, CERTIFY THAT THE CORNER LOCATION SHOWN ON THIS RECORD WAS DETERMINED BY ME OR UNDER MY DIRECTION AND CONTROL AND THAT THIS U.S. PUBLIC LAND SURVEY MONUMENT RECORD IS CORRECT AND COMPLETE TO THE BEST OF MY KNOWLEDGE AND BELIEF.

SIGNATURE

28 OCTOBER 2022

DATE

AFFIX LAND SURVEYOR SEAL

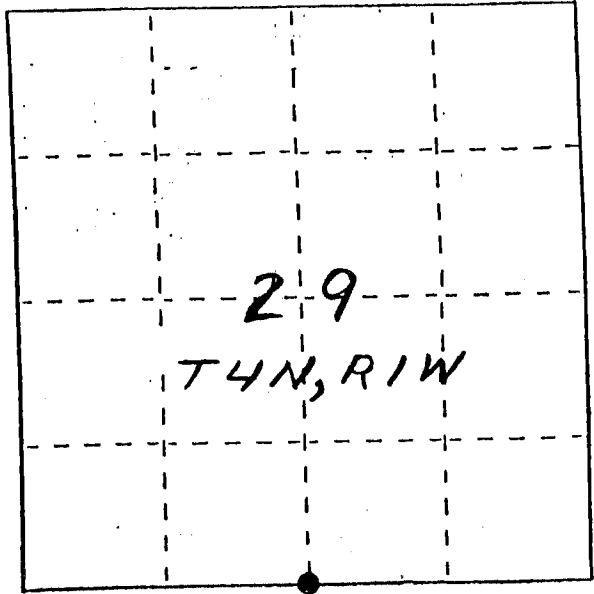


U. S. PUBLIC LAND SURVEY MONUMENT RECORD

INSTRUCTIONS: This record shall show the location of the corner and shall include all of the following nine elements (a through i).

- (a) Identify the corner by reference to the U.S. public land survey system.
 ● = Corner monument restored.

S 1/4 CORNER OF SEC. 29,
 T4N, R1W LIMA TWP.

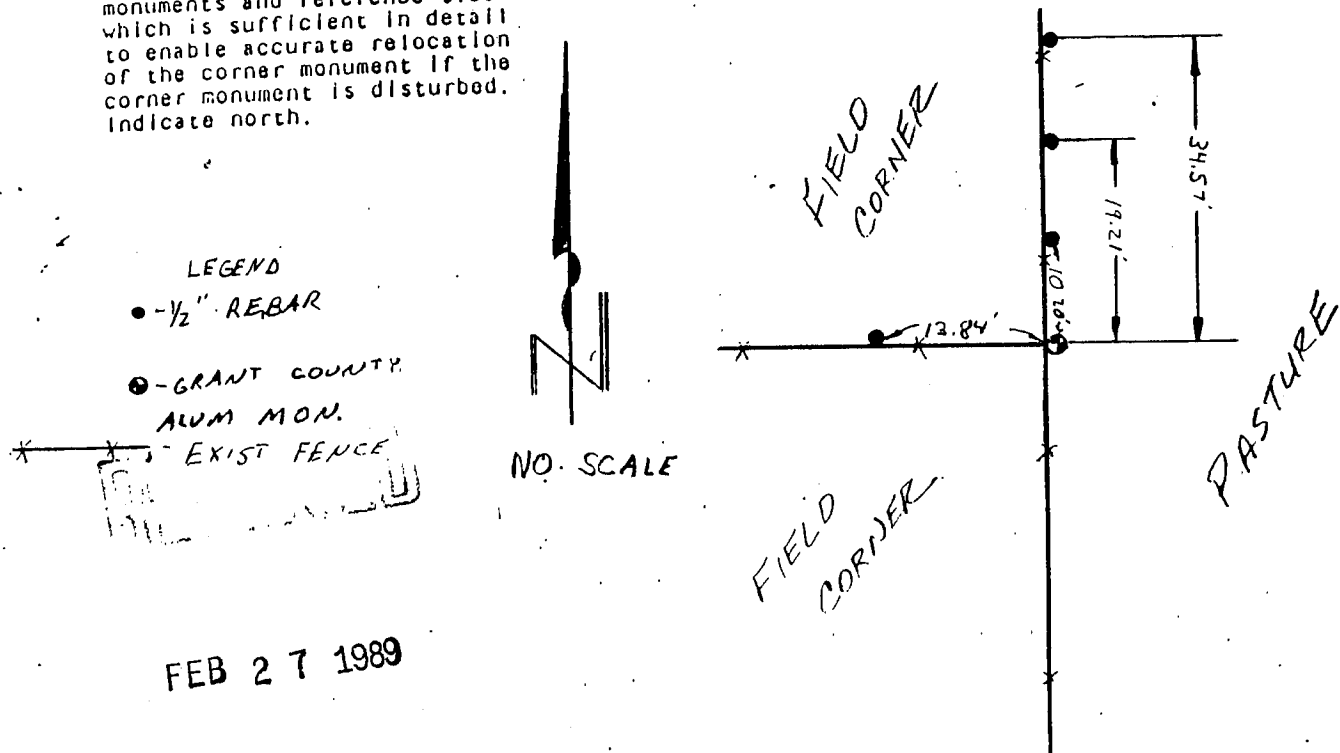


- (b) Describe any record evidence, monument evidence, occupational evidence, testimonial evidence or any other material evidence you considered, and whether the monument was found or placed.

MONUMENT PLACED AT LOCATION EVIDENCED BY OCCUPATIONAL LINES & ORAL TESTIMONY OF LAND OWNER, & VERIFIED BY EDM TRAVERSE.

- (c) In the plan view drawing below, provide reference ties to at least 4 witness monuments, or, if the location is within a municipality, to at least 2 witness monuments. (Witness monuments shall be made of concrete, natural stone, iron or other equally durable material.) Describe witness monuments.

- (d) Show a plan view drawing depicting the relevant monuments and reference ties which is sufficient in detail to enable accurate relocation of the corner monument if the corner monument is disturbed. Indicate north.



FEB 27 1989

PHO

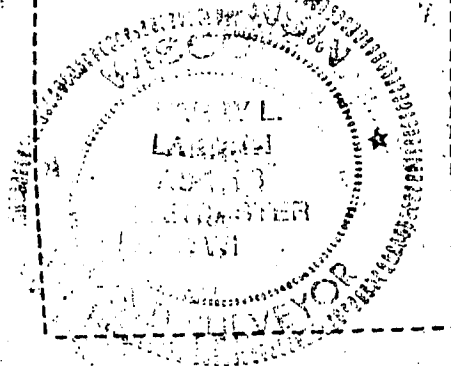
(f) Was the corner restored through acceptance of (1) an obliterated evidence location, or, (2) a found perpetuated location?

FOUND PERPETUATED LOCATION

(g&h) Was the corner reestablished through lost corner proportionate methods? If so, show the method, including the directions and distances to other public land survey corners used as evidence or used for proportioning in determining the corner location?

NO.

Affix Land Surveyor Seal



(i) I, LARRY L. AUSTIN
(type or print name) certify that the corner location shown
on this record was determined by me or under my direction and
control and that this U.S. Public Land Survey Monument Record is
correct and complete to the best of my knowledge and belief.

Larry L. Austin
Signature

11/30/88
Date