

## GRANT COUNTY U.S. PUBLIC LAND SURVEY MONUMENT RECORD

INSTRUCTIONS: THIS RECORD SHALL SHOW THE LOCATION OF THE CORNER AND SHALL INCLUDE ALL OF THE FOLLOWING ELEMENTS (A THROUGH I).

(A) IDENTIFY THE CORNER AS REFERENCED TO THE U.S. PUBLIC LAND SURVEY SYSTEM

■ = CORNER MONUMENT RESTORED

WITNESSES TO CORNER LOCATION:

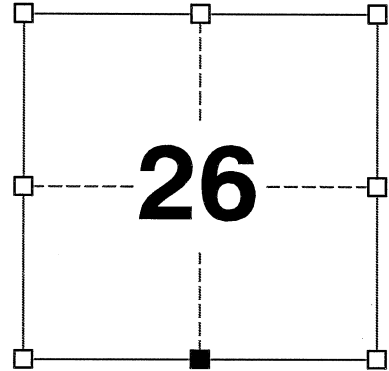
**REID T. SHOWERS**  
**PAIGE O. JELINEK**

GEOGRAPHIC COORDINATES,  
NAD 83 (2011) ADJUSTMENT:

**LATITUDE: 42° 47' 02.04711"**  
**LONGITUDE: 90° 27' 22.11434"**

WISCONSIN COORDINATE REFERENCE SYSTEM (WISCRS),  
GRANT COUNTY, NAD 83 (2011) ADJUSTMENT:

**NORTHING: 500,476.969**  
**EASTING: 887,314.441**



**SECTION 26**  
**TOWNSHIP 4 NORTH, RANGE 1 WEST**  
**TOWN OF LIMA**

(B) DESCRIBE ANY RECORD EVIDENCE, MONUMENT EVIDENCE, OCCUPATIONAL EVIDENCE, TESTIMONIAL EVIDENCE OR ANY OTHER MATERIAL EVIDENCE YOU CONSIDERED, AND WHETHER THE MONUMENT WAS FOUND OR PLACED.

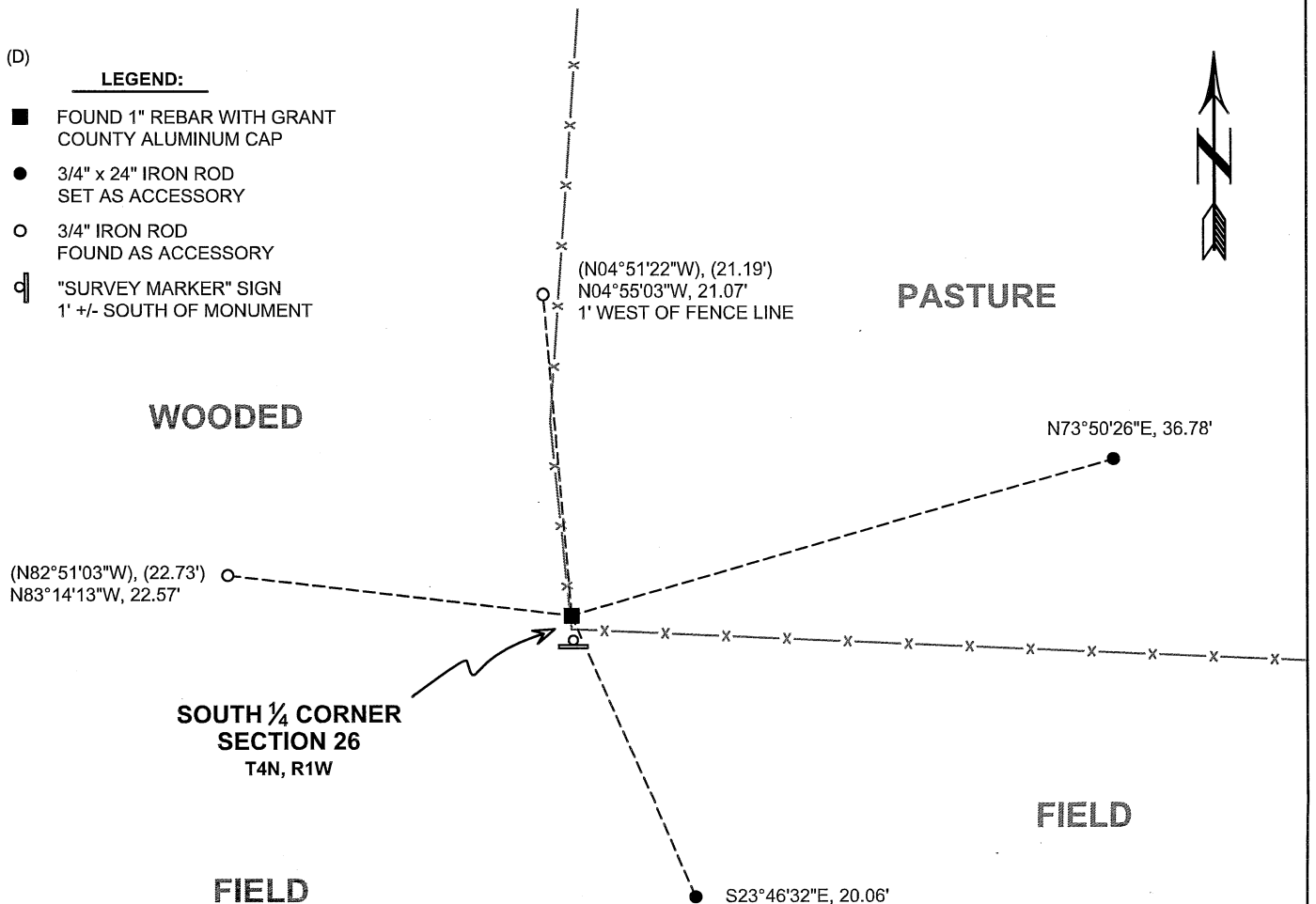
**I COULD FIND NO MONUMENTS OR BEARING TREES FROM THE ORIGINAL GOVERNMENT SURVEY OR THE HISTORIC COUNTY SURVEYOR'S SUBSEQUENT RESURVEYS. I RECOVERED A 1" REBAR WITH A GRANT COUNTY ALUMINUM CAP REPORTED BY LARRY AUSTIN. I ACCEPTED THIS LOCATION AS THE BEST AVAILABLE EVIDENCE OF THE ORIGINAL GOVERNMENT CORNER AND LEFT IT IN PLACE AS IT WAS A FEW INCHES AWAY FROM A WOODEN FENCE CORNER.**

(C) IN THE PLAN VIEW DRAWING BELOW, PROVIDE REFERENCE TIES TO AT LEAST 4 WITNESS MONUMENTS. WITNESS MONUMENTS SHALL BE MADE OF CONCRETE, NATURAL STONE, IRON, BEARING TREES OR ANY OTHER EQUALLY DURABLE MATERIAL. DEPICT THE RELEVANT MONUMENTS AND REFERENCE TIES WITH SUFFICIENT DETAIL TO ENABLE ACCURATE RELOCATION OF THE CORNER IF THE CORNER MONUMENT IS DISTURBED.

(D)

**LEGEND:**

- FOUND 1" REBAR WITH GRANT COUNTY ALUMINUM CAP
- 3/4" x 24" IRON ROD SET AS ACCESSORY
- 3/4" IRON ROD FOUND AS ACCESSORY
- ⊡ "SURVEY MARKER" SIGN 1' +/- SOUTH OF MONUMENT



41104

(E) DESCRIBE ANY MATERIAL DISCREPANCY BETWEEN THE LOCATION OF THE CORNER AS RESTORED OR REESTABLISHED AND THE LOCATION OF THAT CORNER AS PREVIOUSLY RESTORED OR REESTABLISHED BY DISTANCE AND DIRECTION. SHOW THE DISCREPANCY ON THE PLAN VIEW DRAWING UNDER (D), ABOVE. SHOW THE DISTANCES BETWEEN THE CORNER AS PREVIOUSLY RESTORED OR REESTABLISHED AND (1) THE CORNER AS RESTORED OR REESTABLISHED, AND (2) TO AT LEAST 2 OF THE WITNESS MONUMENTS SHOWN ON THE DRAWING IN (D) ABOVE.

N/A

(F) WAS THE CORNER RESTORED THROUGH ACCEPTANCE OF (1) AN OBLITERATED EVIDENCE LOCATION, OR (2) A FOUND PERPETUATED LOCATION?

(2) A FOUND PERPETUATED LOCATION.

(G&H) WAS THE CORNER REESTABLISHED THROUGH LOST CORNER PROPORTIONATE METHODS? IF SO, SHOW THE METHOD, INCLUDING THE DIRECTIONS AND DISTANCES TO OTHER PUBLIC LAND SURVEY CORNERS USED AS EVIDENCE OR USED FOR PROPORTIONING IN DETERMINING THE CORNER LOCATION.

N/A

CORNER HISTORY

THE ORIGINAL GOVERNMENT CORNER WAS ESTABLISHED BY ROBERT CLARK JR. IN THE FIRST QUARTER OF 1833.

IN A SURVEY DATED 14 FEBRUARY 1840, SAM WILTSE FOUND THE ORIGINAL CORNER AND BOTH BEARING TREES.

IN A SURVEY DATED 24 MARCH 1847, GEORGE STUNTZ ESTABLISHED A NEW WITNESS CORNER.

IN A SURVEY DATED 13 JULY 1847, GEORGE STUNTZ VISITED THE CORNER.

IN A SURVEY PLAT DATED 30 OCTOBER 1995, LARRY AUSTIN REPORTED SETTING A GRANT COUNTY ALUMINUM MONUMENT AT THE CORNER.

SINCE 25 NOVEMBER 1996, THIS CORNER HAS BEEN USED IN NUMEROUS SURVEYS NOTING A GRANT COUNTY ALUMINUM MONUMENT AT THE CORNER.

IN A TIE SHEET DATED 10 AUGUST 2005, LARRY AUSTIN REPORTED SETTING A NO. 8 X 30" REBAR WITH A GRANT COUNTY ALUMINUM CAP AT THE CORNER.

SINCE 21 NOVEMBER 2006, THIS CORNER HAS BEEN USED IN NUMEROUS SURVEYS NOTING A NO. 8 REBAR WITH A GRANT COUNTY ALUMINUM CAP AT THE CORNER.

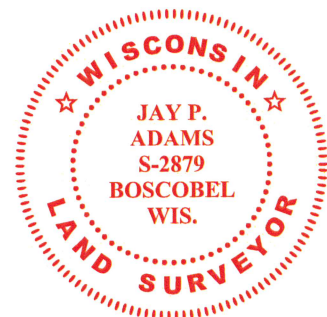
(I) I, JAY P. ADAMS, P.L.S. - 2879, CERTIFY THAT THE CORNER LOCATION SHOWN ON THIS RECORD WAS DETERMINED BY ME OR UNDER MY DIRECTION AND CONTROL AND THAT THIS U.S. PUBLIC LAND SURVEY MONUMENT RECORD IS CORRECT AND COMPLETE TO THE BEST OF MY KNOWLEDGE AND BELIEF.

SIGNATURE

28 OCTOBER 2022

DATE

AFFIX LAND SURVEYOR SEAL



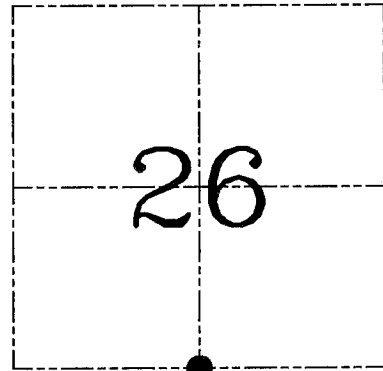
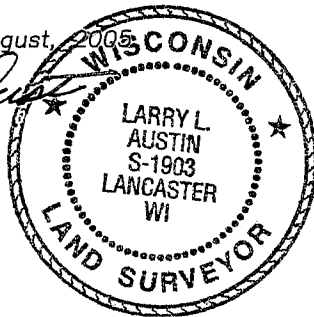
**U.S. PUBLIC LAND SURVEY MONUMENT RECORD – GRANT COUNTY, WI**  
**Section 26, Town 4 North Range 1 West, Town of Lima**

CERTIFICATE

I, Larry L. Austin, do hereby certify that the corner location on this record was determined by me and/or under my direct supervision and that this U.S. public land survey monument record is correct and complete to the best of my knowledge and belief.

Dated this 10th day of August, 2005

*Larry L. Austin*  
 Larry L. Austin S-1903



● = CORNER LOCATION

HISTORY OF CORNER ESTABLISHMENT

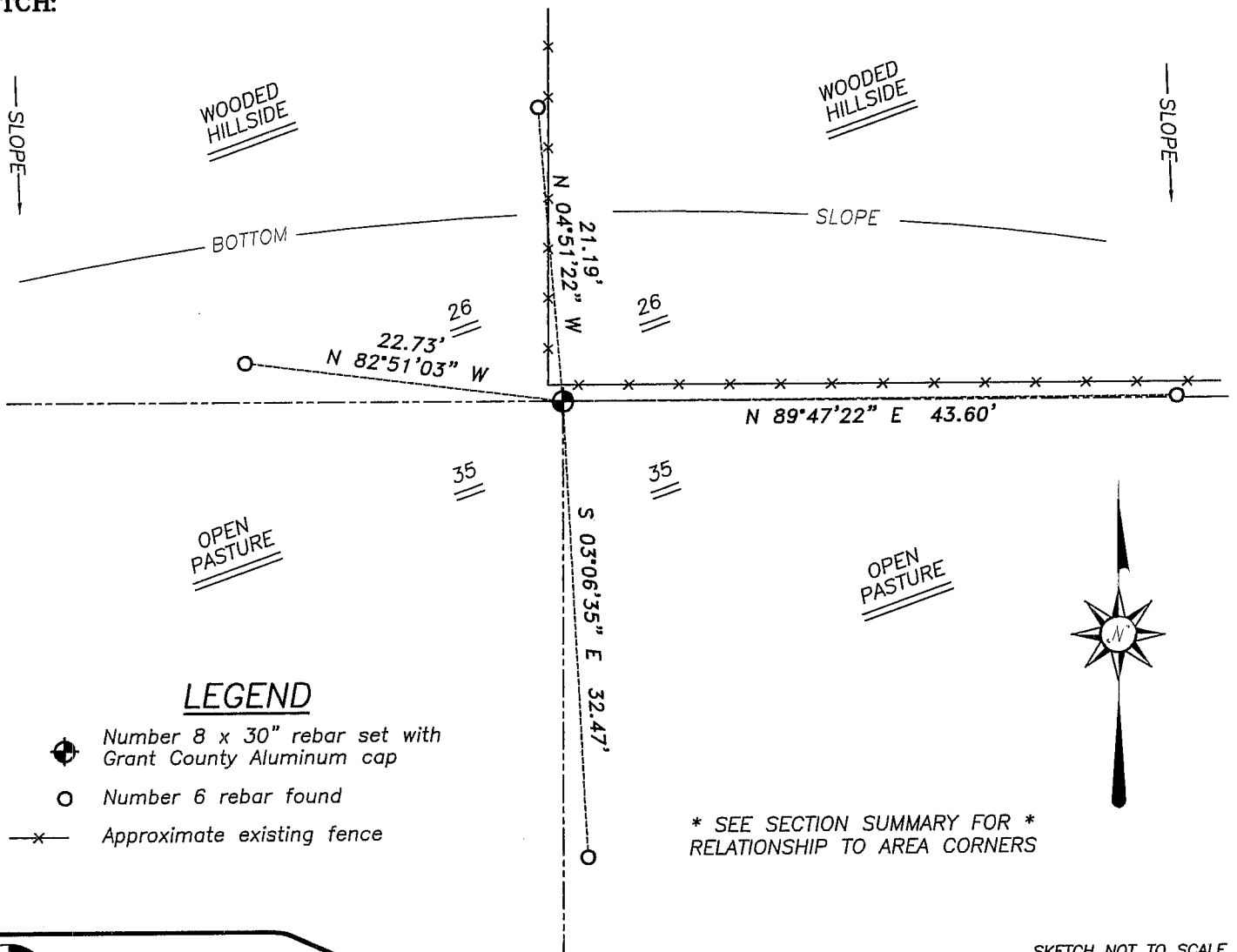
Corner was originally set in 1833 by Parke. In 1995 I set a Grant County Aluminum monument. No other record of the corner was found.

DESCRIPTION OF CORNER EVIDENCE FOUND

I was unable to locate the existing monument. I set a No 8 bar with Grant County aluminum cap based on the existing ties. Verified this location using EDM & GPS methods.

DESCRIPTION OF CORNER AND WITNESS MONUMENTS, references and accessories used to perpetuate the original or re-established location of this corner. Witnesses to corner location Bobby Sedgwick & Brad Digman & Shane Austin

**SKETCH:**



LEGEND

- Number 8 x 30" rebar set with Grant County Aluminum cap
- Number 6 rebar found
- x— Approximate existing fence

\* SEE SECTION SUMMARY FOR \*  
 RELATIONSHIP TO AREA CORNERS

SKETCH NOT TO SCALE



**Austin Engineering LLC**

4211 HWY 81 E, LANCASTER, WI 53813  
 PHONE 608-723-6363 FAX 608-723-6702

JOB NUMBER 05S050  
 FIELDBOOK: TDSR, 2512  
 G:\GRANTDOT\T3NR1W  
 H:\TIE\T4NR1W\104

DRAWN BY: SW AUSTIN  
 APPROVED: LL AUSTIN

# GRANT COUNTY

## Survey Monument Record

TYPE OF MONUMENT GRANT COUNTY Alum. Mon.

STATE PLANE COORDINATES: N \_\_\_\_\_  
E \_\_\_\_\_

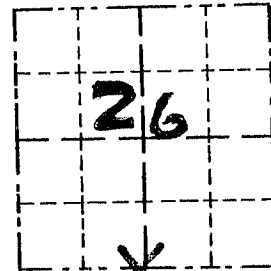
ELEVATION — M.S.L. DATUM: \_\_\_\_\_

THETA ANGLE: \_\_\_\_\_

FIELD BOOK: 95-14

PAGE 13

CORNER NO. 104  
SECTION 26  
TOWN 4N  
RANGE 1W  
S. 1/4 COR.



LOCATION  
(Indicated by "X")

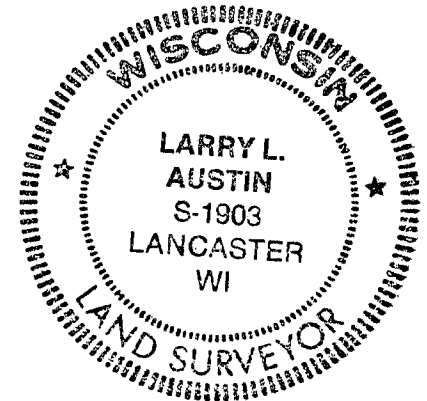
### BASIS FOR MONUMENT LOCATION

(Use reverse side if necessary)

Show info such as: History of corner, with reference to Vol. and pg., dates, surveyor; exact description of monument replaced; if location computed, by taped or EDM traverse; landowner, remarks, etc.

SEAL:

CORNER WAS ORIGINALLY SET IN 1833 BY CLARK. NO RECORD FOUND SINCE ORIGINAL SURVEY. ACCEPTED E-W FENCE FOR N-S LOCATION; USED A FOUND 1" PIPE PURPORTED TO BE A SURVEY MARKER & PROJECTED TO SOUTH TO EXIST. E-W FENCE. (THE 1" PIPE IS LOCATED AT THE NW CORNER OF S 1/2, NW 1/4, SE 1/4; THIS PIPE HAS BEEN PURPORTED TO BE THE CORNER MARKER BY 2 GENERATIONS OF OWNERSHIP)



CERTIFIED CORRECT

*Larry L. Austin*  
Registered Land Surveyor

DATE: 10/20/95

### TIE SKETCH

Show at least three (3) ties and monument

