

U.S. PUBLIC LAND SURVEY MONUMENT RECORD - GRANT COUNTY, WI

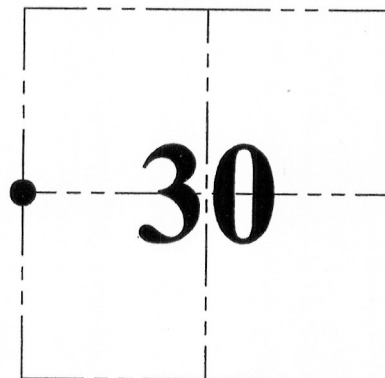
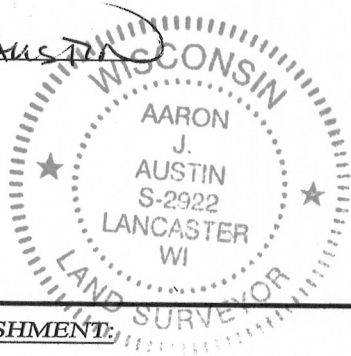
Section 30, Town 4 North Range 1 West, Town of Lima

CERTIFICATE:

I, Aaron J. Austin, do hereby certify that the corner location on this record was determined by me and/or under my direct supervision and that this U.S. Public Land Survey Monument Record is correct and complete to the best of my knowledge and belief.

Dated this 4 th day of MARCH, 2013.

Aaron J. Austin
 Aaron J. Austin, S-2922



● = CORNER LOCATION

HISTORY OF CORNER ESTABLISHMENT:

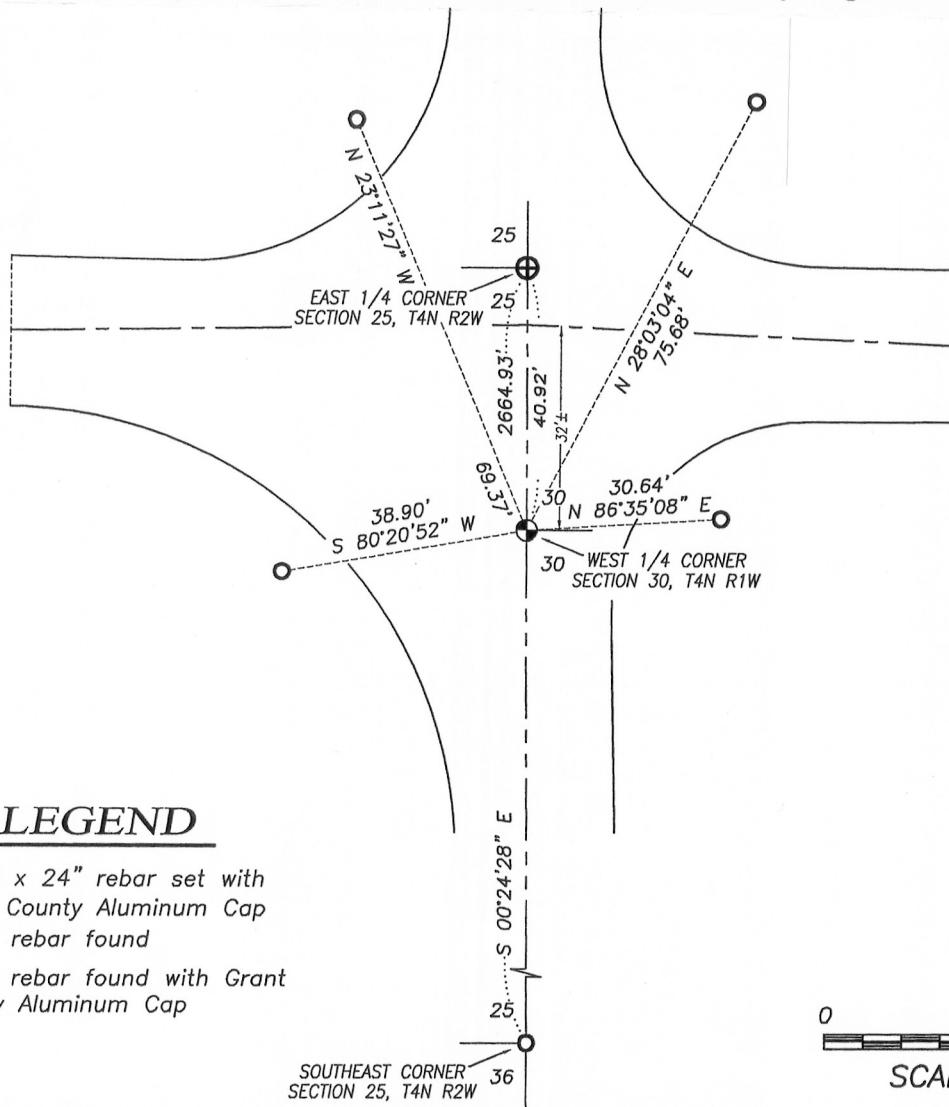
Corner was never originally set.

DESCRIPTION OF CORNER EVIDENCE FOUND:

I reset the corner at the proportioned offset on the East line of the SE 1/4 of Section 25, T4N R2W. I verified this location using G.P.S. and E.D.M. methods.

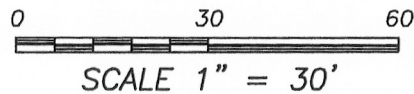
DESCRIPTION OF CORNER AND WITNESS MONUMENTS, references and accessories used to perpetuate the original or re-established location of this corner. Witnesses to corner location Bobby Sedgwick and Shelby Blindert.

SKETCH:



LEGEND

- ⊕ No. 8 x 24" rebar set with Grant County Aluminum Cap
- No. 6 rebar found
- ⊕ No. 8 rebar found with Grant County Aluminum Cap



Austin Engineering LLC
 austinengineeringllc.com

4211 HWY 81 E, LANCASTER, WI 53813
 PHONE: 608-723-6363 FAX: 608-723-6702

JOB NO: 12s251
 G:\T4NR1W\30
 H:\TIE\T4NR1W\94

FIELDBOOK: TDSR
 DRAWN BY: AJ AUSTIN
 CREW: BS-SB