

**GRANT COUNTY
U.S. PUBLIC LAND SURVEY MONUMENT RECORD**

INSTRUCTIONS: THIS RECORD SHALL SHOW THE LOCATION OF THE CORNER AND SHALL INCLUDE ALL OF THE FOLLOWING ELEMENTS (A THROUGH I).

(A) IDENTIFY THE CORNER AS REFERENCED TO THE U.S. PUBLIC LAND SURVEY SYSTEM

■ = CORNER MONUMENT RESTORED

WITNESSES TO CORNER LOCATION:

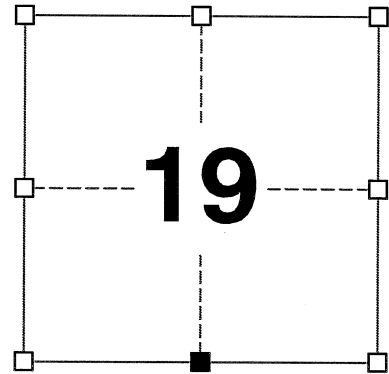
REID T. SHOWERS
PAIGE O. JELINEK

GEOGRAPHIC COORDINATES,
NAD 83 (2011) ADJUSTMENT:

LATITUDE: 42° 47' 53.99895"
LONGITUDE: 90° 32' 08.16465"

WISCONSIN COORDINATE REFERENCE SYSTEM (WISCRS),
GRANT COUNTY, NAD 83 (2011) ADJUSTMENT:

NORTHING: 505,659.842
EASTING: 865,965.940



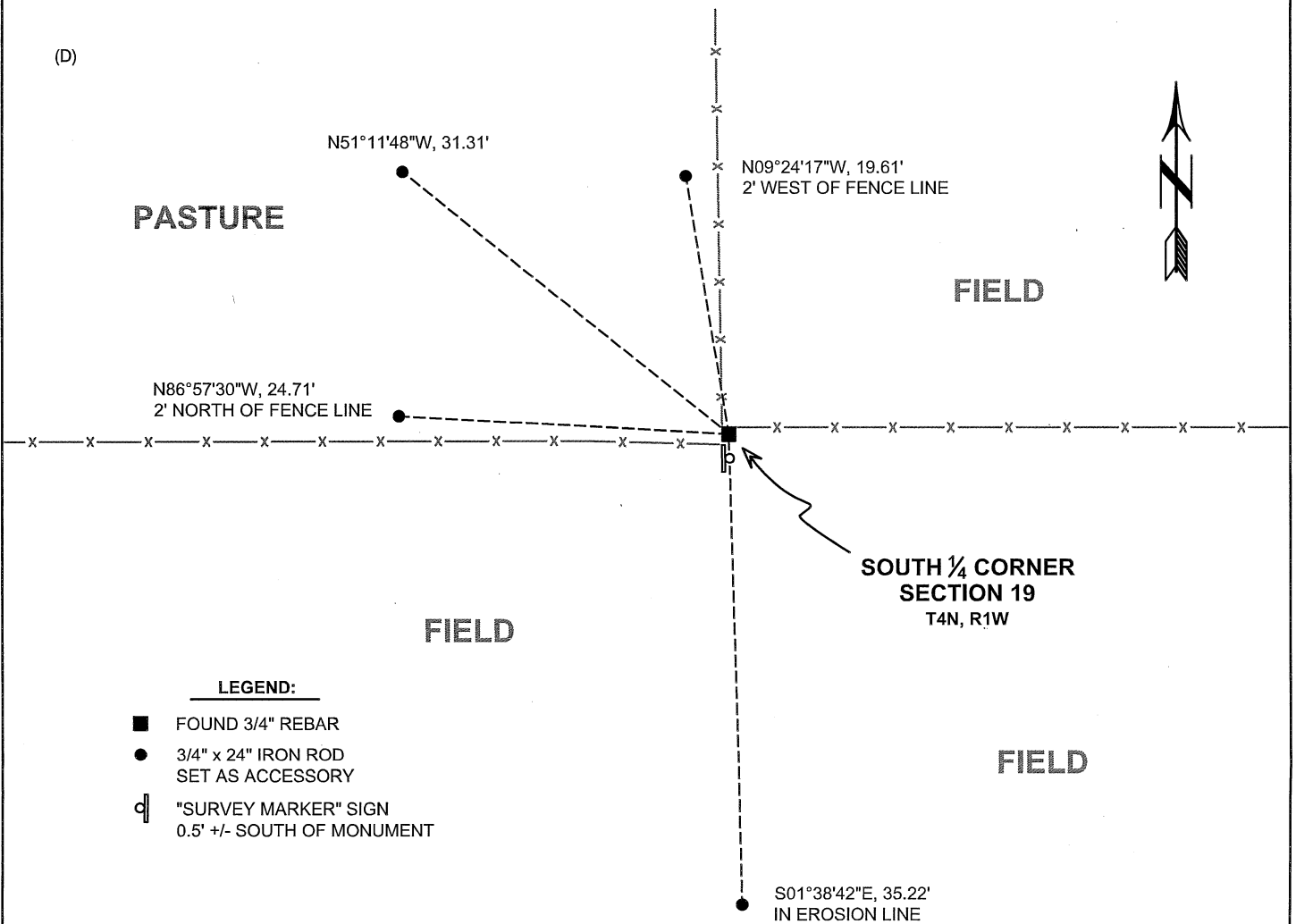
SECTION 19
TOWNSHIP 4 NORTH, RANGE 1 WEST
TOWN OF LIMA

(B) DESCRIBE ANY RECORD EVIDENCE, MONUMENT EVIDENCE, OCCUPATIONAL EVIDENCE, TESTIMONIAL EVIDENCE OR ANY OTHER MATERIAL EVIDENCE YOU CONSIDERED, AND WHETHER THE MONUMENT WAS FOUND OR PLACED.

I COULD FIND NO MONUMENTS OR BEARING TREES FROM THE ORIGINAL GOVERNMENT SURVEY OR THE HISTORIC COUNTY SURVEYOR'S SUBSEQUENT RESURVEYS. I RECOVERED A 3/4" REBAR REPORTED BY LARRY AUSTIN. I ACCEPTED THIS LOCATION AS THE BEST AVAILABLE EVIDENCE OF THE ORIGINAL GOVERNMENT CORNER AND LEFT IT IN PLACE AS IT WAS AT THE EDGE OF CONCRETE THAT WAS HOLDING A PIPE POST IN PLACE.

(C) IN THE PLAN VIEW DRAWING BELOW, PROVIDE REFERENCE TIES TO AT LEAST 4 WITNESS MONUMENTS. WITNESS MONUMENTS SHALL BE MADE OF CONCRETE, NATURAL STONE, IRON, BEARING TREES OR ANY OTHER EQUALLY DURABLE MATERIAL. DEPICT THE RELEVANT MONUMENTS AND REFERENCE TIES WITH SUFFICIENT DETAIL TO ENABLE ACCURATE RELOCATION OF THE CORNER IF THE CORNER MONUMENT IS DISTURBED.

(D)



LEGEND:

- FOUND 3/4" REBAR
- 3/4" x 24" IRON ROD SET AS ACCESSORY
- ⊓ "SURVEY MARKER" SIGN 0.5' +/- SOUTH OF MONUMENT

41092

(E) DESCRIBE ANY MATERIAL DISCREPANCY BETWEEN THE LOCATION OF THE CORNER AS RESTORED OR REESTABLISHED AND THE LOCATION OF THAT CORNER AS PREVIOUSLY RESTORED OR REESTABLISHED BY DISTANCE AND DIRECTION. SHOW THE DISCREPANCY ON THE PLAN VIEW DRAWING UNDER (D), ABOVE. SHOW THE DISTANCES BETWEEN THE CORNER AS PREVIOUSLY RESTORED OR REESTABLISHED AND (1) THE CORNER AS RESTORED OR REESTABLISHED, AND (2) TO AT LEAST 2 OF THE WITNESS MONUMENTS SHOWN ON THE DRAWING IN (D) ABOVE.

N/A

(F) WAS THE CORNER RESTORED THROUGH ACCEPTANCE OF (1) AN OBLITERATED EVIDENCE LOCATION, OR (2) A FOUND PERPETUATED LOCATION?

(2) A FOUND PERPETUATED LOCATION.

(G&H) WAS THE CORNER REESTABLISHED THROUGH LOST CORNER PROPORTIONATE METHODS? IF SO, SHOW THE METHOD, INCLUDING THE DIRECTIONS AND DISTANCES TO OTHER PUBLIC LAND SURVEY CORNERS USED AS EVIDENCE OR USED FOR PROPORTIONING IN DETERMINING THE CORNER LOCATION.

N/A

CORNER HISTORY

THE ORIGINAL GOVERNMENT CORNER WAS ESTABLISHED BY ROBERT CLARK JR. IN THE FIRST QUARTER OF 1833.

IN A SURVEY DATED 10 JANUARY 1842, JOS. E. FREEMAN FOUND THE ORIGINAL CORNER.

IN A SURVEY DATED 4 NOVEMBER 1842, SAM WILTSE FOUND THE ORIGINAL BEARING TREES.

IN A SURVEY DATED 4 NOVEMBER 1842, SAM WILTSE VISITED THE CORNER.

IN A SURVEY DATED 16 MARCH 1844, SAM WILTSE VISITED THE CORNER.

IN A SURVEY DATED SEPTEMBER 1975, HOMER RALPH FOUND A 3" DIAMETER STEEL CORNER POST IN CONCRETE AT THE CORNER.

IN A SURVEY PLAT DATED 19 NOVEMBER 1997 AND SUBSEQUENT TIE SHEET DATED 15 DECEMBER 1997, LARRY AUSTIN REPORTED SETTING A 3/4" X 24" REBAR AT THE CORNER.

SINCE 5 JUNE 1998, THIS CORNER HAS BEEN USED IN NUMEROUS SURVEYS NOTING A 3/4" REBAR AT THE CORNER.

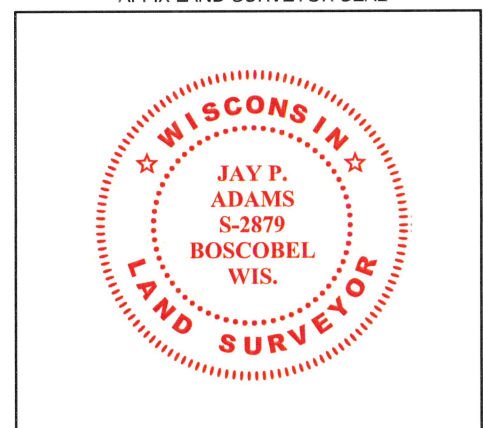
(I) I, JAY P. ADAMS, P.L.S. - 2879, CERTIFY THAT THE CORNER LOCATION SHOWN ON THIS RECORD WAS DETERMINED BY ME OR UNDER MY DIRECTION AND CONTROL AND THAT THIS U.S. PUBLIC LAND SURVEY MONUMENT RECORD IS CORRECT AND COMPLETE TO THE BEST OF MY KNOWLEDGE AND BELIEF.

SIGNATURE

28 OCTOBER 2022

DATE

AFFIX LAND SURVEYOR SEAL

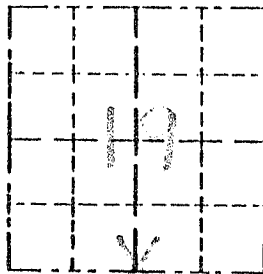


Survey Monument Record

TYPE OF MONUMENT 3/4" X 24" IRON BAR SET

CORNER NO. 21
 SECTION 17
 TOWN 4N
 RANGE 1W

FIELD BOOK: 96-22(A)
 PAGE (23)



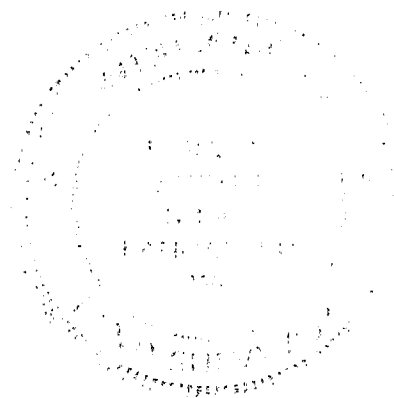
BASIS FOR MONUMENT LOCATION

(Use reverse side if necessary)

Show info such as: History of corner, with reference to Vol and pg, dates, surveyor; exact description of monument replaced; if location computed, by taped or EDM traverse; landowner, remarks, etc.

CORNER SET IN 1833
 BY ROBERT CLARK.
 HOMER RALPH MEASURED
 TO OCCUPIED FENCE
 CORNER, I FOUND THE
 EXISTING FENCE CORNER
 AND ACCEPTED IT AFTER
 EDM TRAVERSE OF AREA.

SEAL:



CERTIFIED CORRECT

Henry J. Christ
 Registered Land Surveyor

DATE: 12-15-97

TIE SKETCH

Show at least three (3) ties and monument

LEGEND

- 3/4" X 24" IRON BAR SET
- 1/2" X 15" IRON BAR SET
- - - EXISTING FENCE

