

REMON
41090

GRANT COUNTY U.S. PUBLIC LAND SURVEY MONUMENT RECORD

INSTRUCTIONS: THIS RECORD SHALL SHOW THE LOCATION OF THE CORNER AND SHALL INCLUDE ALL OF THE FOLLOWING ELEMENTS (A THROUGH I).

(A) IDENTIFY THE CORNER AS REFERENCED TO THE U.S. PUBLIC LAND SURVEY SYSTEM

■ = CORNER MONUMENT RESTORED

WITNESSES TO CORNER LOCATION:

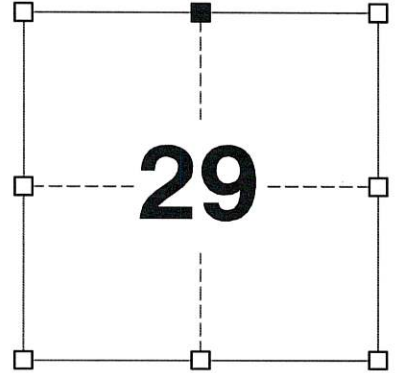
JAY P. ADAMS PAIGE O. JELINEK
TYLER D. ATKINSON TODD C. PATTON

GEOGRAPHIC COORDINATES,
NAD 83 (2011) ADJUSTMENT:

LATITUDE: 42° 47' 53.98458"
LONGITUDE: 90° 30' 56.87629"

WISCONSIN COORDINATE REFERENCE SYSTEM (WISCRS),
GRANT COUNTY, NAD 83 (2011) ADJUSTMENT:

NORTHING: 505,675.675
EASTING: 871,280.991



SECTION 29
TOWNSHIP 4 NORTH, RANGE 1 WEST
TOWN OF LIMA

(B) DESCRIBE ANY RECORD EVIDENCE, MONUMENT EVIDENCE, OCCUPATIONAL EVIDENCE, TESTIMONIAL EVIDENCE OR ANY OTHER MATERIAL EVIDENCE YOU CONSIDERED, AND WHETHER THE MONUMENT WAS FOUND OR PLACED.

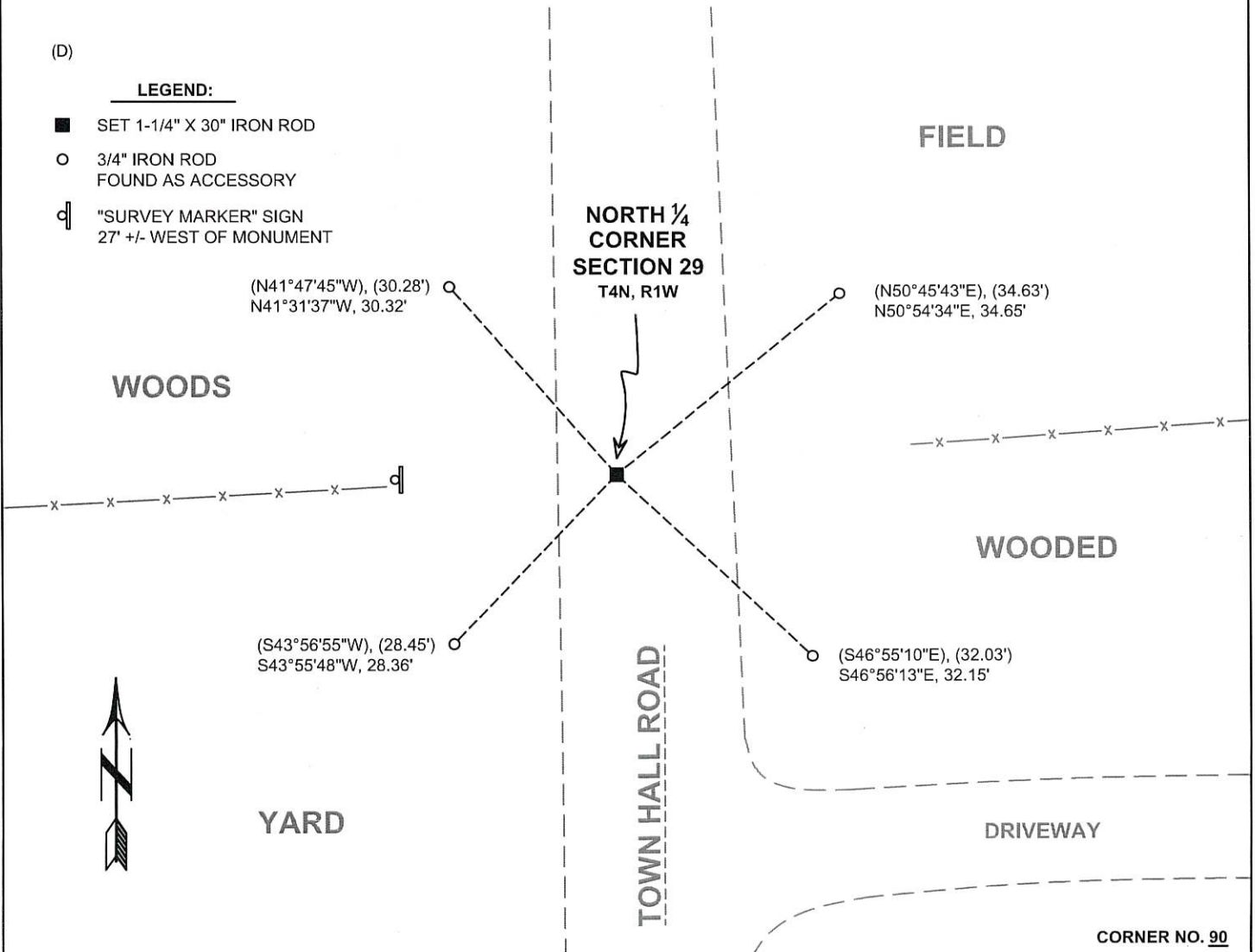
I COULD FIND NO MONUMENTS FROM THE ORIGINAL GOVERNMENT SURVEY OR THE HISTORIC COUNTY SURVEYOR'S SUBSEQUENT RESURVEYS. I RECOVERED THE RAIL ROAD SPIKE REPORTED BY LARRY AUSTIN. I ACCEPTED THIS LOCATION AS THE BEST AVAILABLE EVIDENCE OF THE ORIGINAL GOVERNMENT CORNER AND REMONUMENTED IT WITH A 1-1/4" X 30" IRON ROD.

(C) IN THE PLAN VIEW DRAWING BELOW, PROVIDE REFERENCE TIES TO AT LEAST 4 WITNESS MONUMENTS. WITNESS MONUMENTS SHALL BE MADE OF CONCRETE, NATURAL STONE, IRON, BEARING TREES OR ANY OTHER EQUALLY DURABLE MATERIAL. DEPICT THE RELEVANT MONUMENTS AND REFERENCE TIES WITH SUFFICIENT DETAIL TO ENABLE ACCURATE RELOCATION OF THE CORNER IF THE CORNER MONUMENT IS DISTURBED.

(D)

LEGEND:

- SET 1-1/4" X 30" IRON ROD
- 3/4" IRON ROD FOUND AS ACCESSORY
- ⊞ "SURVEY MARKER" SIGN 27' +/- WEST OF MONUMENT



CORNER NO. 90

(E) DESCRIBE ANY MATERIAL DISCREPANCY BETWEEN THE LOCATION OF THE CORNER AS RESTORED OR REESTABLISHED AND THE LOCATION OF THAT CORNER AS PREVIOUSLY RESTORED OR REESTABLISHED BY DISTANCE AND DIRECTION. SHOW THE DISCREPANCY ON THE PLAN VIEW DRAWING UNDER (D), ABOVE. SHOW THE DISTANCES BETWEEN THE CORNER AS PREVIOUSLY RESTORED OR REESTABLISHED AND (1) THE CORNER AS RESTORED OR REESTABLISHED, AND (2) TO AT LEAST 2 OF THE WITNESS MONUMENTS SHOWN ON THE DRAWING IN (D) ABOVE.

N/A

(F) WAS THE CORNER RESTORED THROUGH ACCEPTANCE OF (1) AN OBLITERATED EVIDENCE LOCATION, OR (2) A FOUND PERPETUATED LOCATION?

(2) A FOUND PERPETUATED LOCATION.

(G&H) WAS THE CORNER REESTABLISHED THROUGH LOST CORNER PROPORTIONATE METHODS? IF SO, SHOW THE METHOD, INCLUDING THE DIRECTIONS AND DISTANCES TO OTHER PUBLIC LAND SURVEY CORNERS USED AS EVIDENCE OR USED FOR PROPORTIONING IN DETERMINING THE CORNER LOCATION.

N/A

CORNER HISTORY

THE ORIGINAL GOVERNMENT CORNER WAS ESTABLISHED BY ROBERT CLARK JR. IN THE FIRST QUARTER OF 1833.

IN A SURVEY DATED 10 DECEMBER 1840, JOS. E. FREEMAN FOUND THE ORIGINAL CORNER.

IN A SURVEY DATED 11 NOVEMBER 1842, SAM WILTSE FOUND THE ORIGINAL CORNER AND BOTH BEARING TREES.

IN A SURVEY DATED 17 JUNE 1966, DALE CHARLES DIXON NOTED THE CORNER.

IN A TIE SHEET DATED 30 NOVEMBER 1980, LARRY AUSTIN REPORTED SETTING A RAIL ROAD SPIKE AT THE CORNER.

IN A SURVEY PLAT DATED 21 NOVEMBER 1988, LARRY AUSTIN REPORTED FINDING A RAIL ROAD SPIKE AT THE CORNER.

IN A SURVEY PLAT DATED 23 MAY 1994, LARRY AUSTIN REPORTED FINDING A RAIL ROAD SPIKE AT THE CORNER.

IN A PLAT OF SURVEY DATED 2 SEPTEMBER 2003, LARRY AUSTIN NOTED THE CORNER WITH NO MENTION OF THE MONUMENT TYPE.

SINCE 23 OCTOBER 2003, THIS CORNER HAS BEEN USED IN NUMEROUS SURVEYS NOTING A RAIL ROAD SPIKE AT THE CORNER.

IN A TIE SHEET DATED 4 MAY 2017, AARON AUSTIN REPORTED FINDING A RAIL ROAD SPIKE AT THE CORNER.

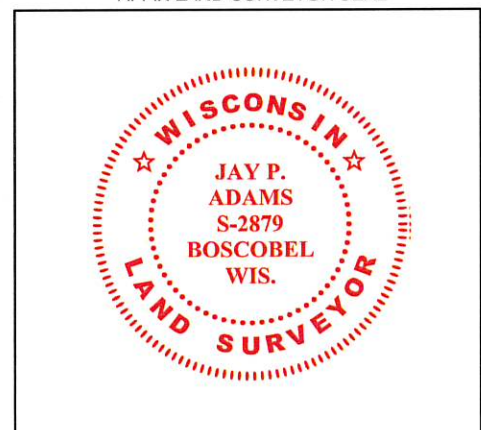
AFFIX LAND SURVEYOR SEAL

(I) I, JAY P. ADAMS, P.L.S. - 2879, CERTIFY THAT THE CORNER LOCATION SHOWN ON THIS RECORD WAS DETERMINED BY ME OR UNDER MY DIRECTION AND CONTROL AND THAT THIS U.S. PUBLIC LAND SURVEY MONUMENT RECORD IS CORRECT AND COMPLETE TO THE BEST OF MY KNOWLEDGE AND BELIEF.

SIGNATURE

24 SEPTEMBER 2022

DATE



U.S. PUBLIC LAND SURVEY MONUMENT RECORD - GRANT COUNTY, WI

Section 29, Town 4 North Range 1 West, Town of Lima (a)

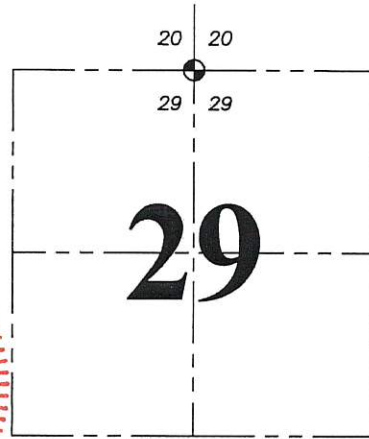
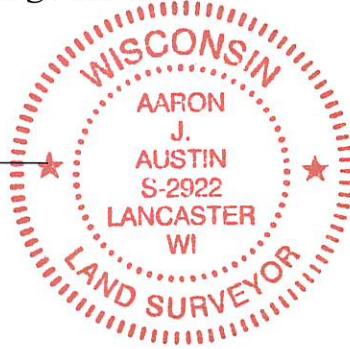
NOTE: This form is intended and designed to fulfill all requirements of the Wisconsin Administrative Code Chapter A-E 7.08, U.S. Public Land Survey Monument Record (3) (a) (b) (c) (d) (e) (f) (g) (h) (i).

CERTIFICATE: (i)

I, Aaron J. Austin, Wisconsin Professional Land Surveyor, do hereby certify that the corner location on this record was determined by me and/or under my direct supervision and that this U.S. Public Land Survey Monument Record is correct and complete to the best of my knowledge and belief.

Dated this 4th day of May, 2017.

Aaron J. Austin
Aaron J. Austin, S-2922



⊕ = CORNER LOCATION

Grant County Coordinates:
NAD 83 (2011)
Northing: 505,675.72
Easting: 871,281.06

HISTORY OF CORNER ESTABLISHMENT:

Robert Clark set the original corner in 1833.
Larry Austin reset the corner and prepared a Survey Monument Record dated 11-30-1988.

DESCRIPTION OF CORNER EVIDENCE FOUND: (b) (f) (g) (h)

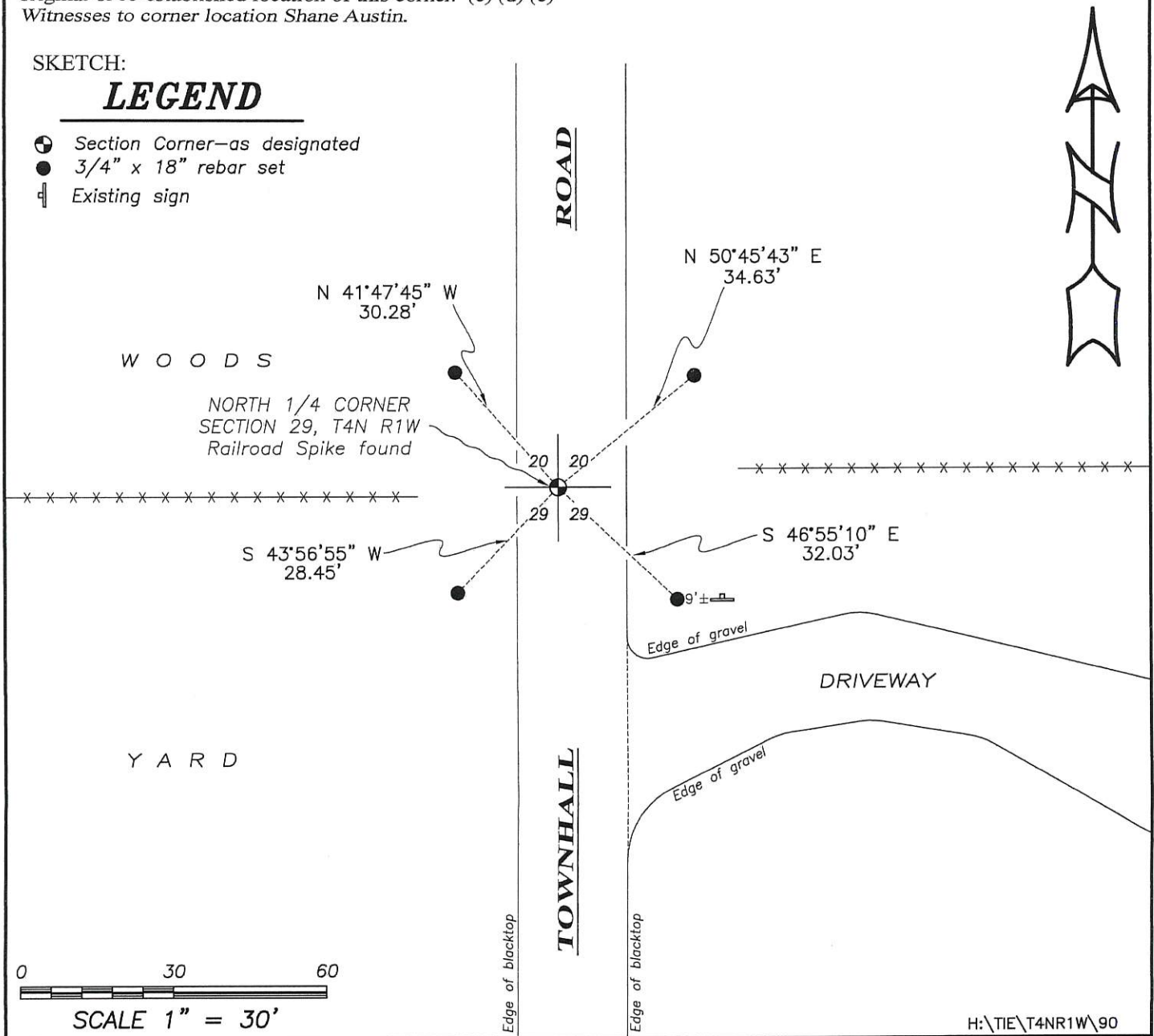
The Railroad Spike was found as set by Larry Austin. I found two witness corners. One in good condition and one disturbed. I set four new witness corners after I verified it's location with G.P.S. and E.D.M. methods

DESCRIPTION OF CORNER AND WITNESS MONUMENT, references and accessories used to perpetuate the original or re-established location of this corner. (c) (d) (e)
Witnesses to corner location Shane Austin.

SKETCH:

LEGEND

- ⊕ Section Corner—as designated
- 3/4" x 18" rebar set
- ⊥ Existing sign

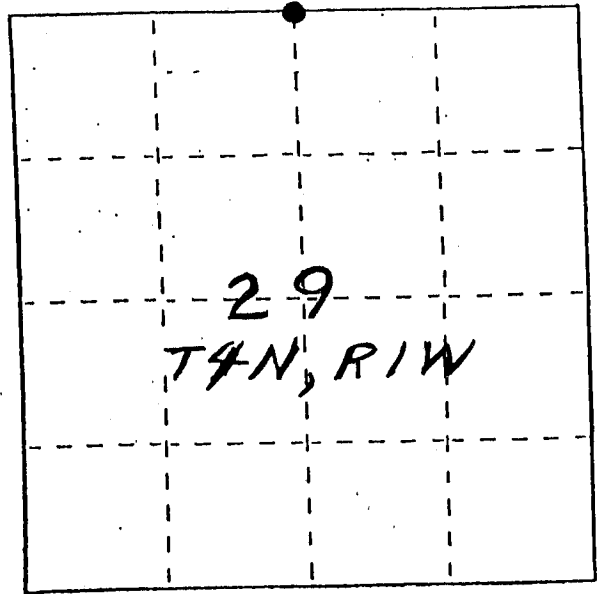


U. S. PUBLIC LAND SURVEY MONUMENT RECORD

INSTRUCTIONS: This record shall show the location of the corner and shall include all of the following nine elements (a through i).

- (a) Identify the corner by reference to the U.S. public land survey system.
 ● = Corner monument restored.

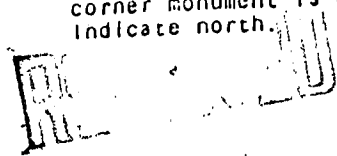
*NY4 CORNER, SEC. 29,
 T4N, R1W, LIMA TWP.*



- (b) Describe any record evidence, monument evidence, occupational evidence, testimonial evidence or any other material evidence you considered, and whether the monument was found or placed.
MONUMENT WAS PLACED. AT LOCATION BASED DESCRIPTIONS OF PROPERTY ADJACENT TO THE CORNER & BY OCCUPATIONAL EVIDENCE, VERIFIED BY EDM TRAVERSE OF THE AREA.

- (c) In the plan view drawing below, provide reference ties to at least 4 witness monuments, or, if the location is within a municipality, to at least 2 witness monuments. (Witness monuments shall be made of concrete, natural stone, iron or other equally durable material.)
 Describe witness monuments.

- (d) Show a plan view drawing depicting the relevant monuments and reference ties which is sufficient in detail to enable accurate relocation of the corner monument if the corner monument is disturbed. Indicate north.

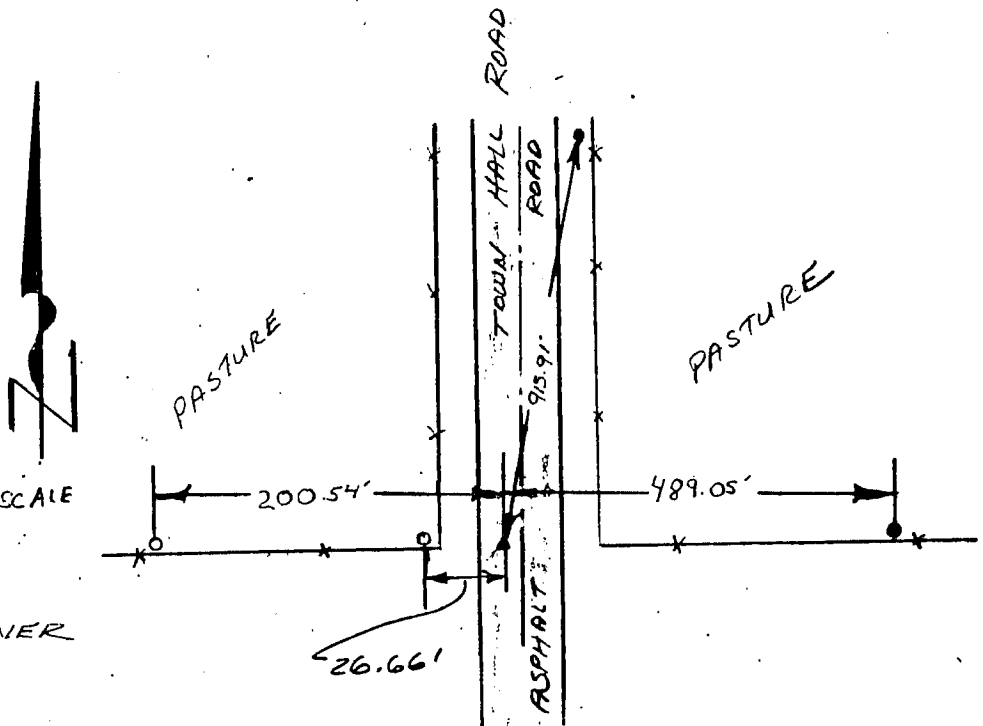


FEB. 27, 1989

LEGEND

- - 1/2" REBAR
- - 3/4" REBAR
- - 1" PIPE
- ▲ - RR SPIKE = NY4 CORNER
- ✕ - EXIST. FENCE

NQ SCALE



P. 90

