

**GRANT COUNTY
U.S. PUBLIC LAND SURVEY MONUMENT RECORD**

INSTRUCTIONS: THIS RECORD SHALL SHOW THE LOCATION OF THE CORNER AND SHALL INCLUDE ALL OF THE FOLLOWING ELEMENTS (A THROUGH I).

(A) IDENTIFY THE CORNER AS REFERENCED TO THE U.S. PUBLIC LAND SURVEY SYSTEM

■ = CORNER MONUMENT RESTORED

WITNESSES TO CORNER LOCATION:

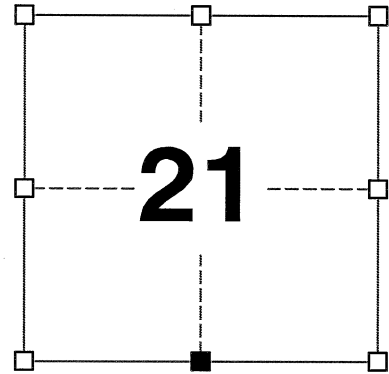
TODD C. PATTON
PAIGE O. JELINEK

GEOGRAPHIC COORDINATES,
NAD 83 (2011) ADJUSTMENT:

LATITUDE: 42° 47' 53.97420"
LONGITUDE: 90° 29' 45.53372"

WISCONSIN COORDINATE REFERENCE SYSTEM (WISCRS),
GRANT COUNTY, NAD 83 (2011) ADJUSTMENT:

NORTHING: 505,693.175
EASTING: 876,600.084

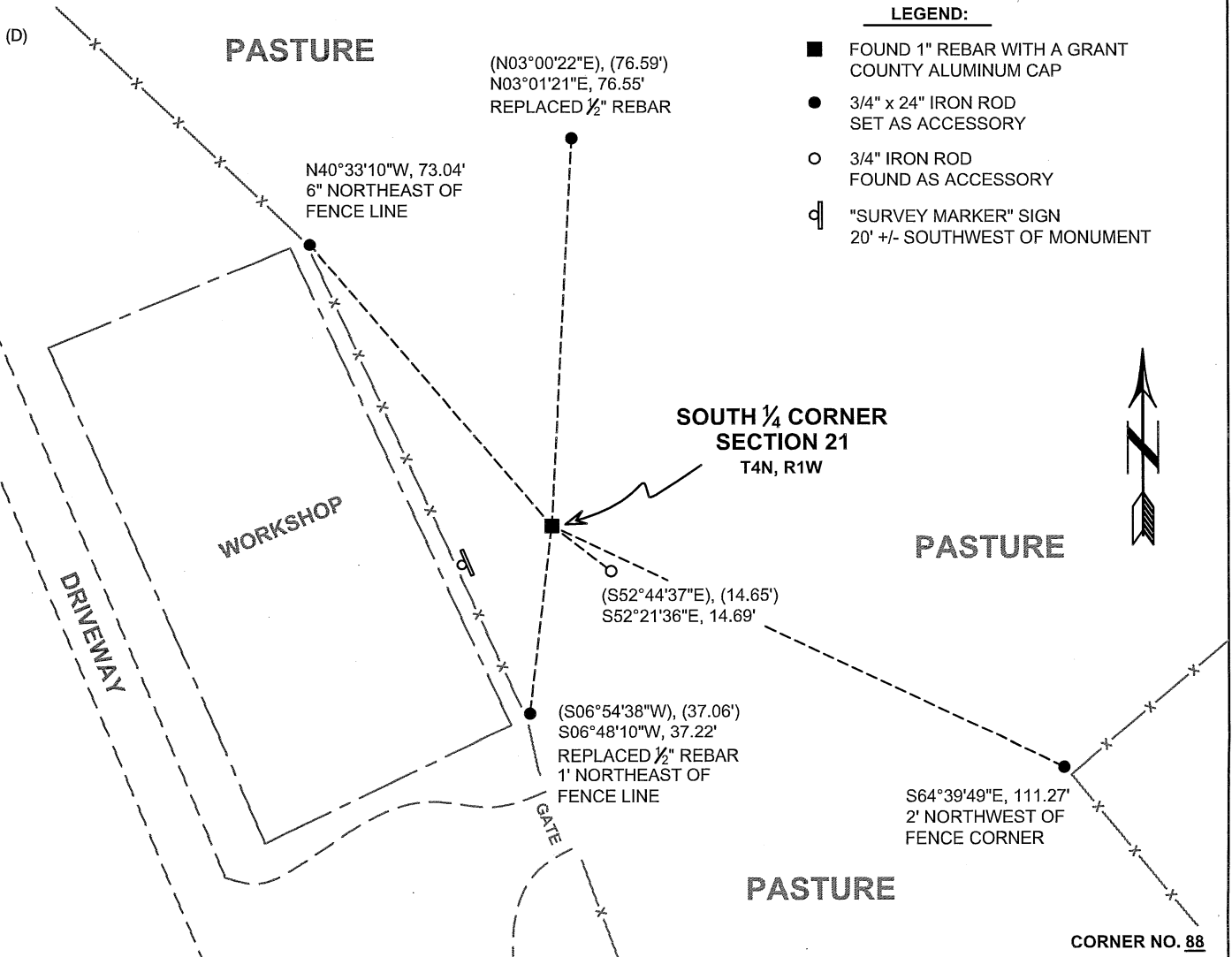


SECTION 21
TOWNSHIP 4 NORTH, RANGE 1 WEST
TOWN OF LIMA

(B) DESCRIBE ANY RECORD EVIDENCE, MONUMENT EVIDENCE, OCCUPATIONAL EVIDENCE, TESTIMONIAL EVIDENCE OR ANY OTHER MATERIAL EVIDENCE YOU CONSIDERED, AND WHETHER THE MONUMENT WAS FOUND OR PLACED.

I COULD FIND NO MONUMENTS FROM THE ORIGINAL GOVERNMENT SURVEY OR THE HISTORIC COUNTY SURVEYOR'S SUBSEQUENT RESURVEYS. I RECOVERED A 1" REBAR WITH A GRANT COUNTY ALUMINUM CAP REPORTED BY AARON AUSTIN. I ACCEPTED THIS LOCATION AS THE BEST AVAILABLE EVIDENCE OF THE ORIGINAL GOVERNMENT CORNER AND LEFT IT IN PLACE.

(C) IN THE PLAN VIEW DRAWING BELOW, PROVIDE REFERENCE TIES TO AT LEAST 4 WITNESS MONUMENTS. WITNESS MONUMENTS SHALL BE MADE OF CONCRETE, NATURAL STONE, IRON, BEARING TREES OR ANY OTHER EQUALLY DURABLE MATERIAL. DEPICT THE RELEVANT MONUMENTS AND REFERENCE TIES WITH SUFFICIENT DETAIL TO ENABLE ACCURATE RELOCATION OF THE CORNER IF THE CORNER MONUMENT IS DISTURBED.



(E) DESCRIBE ANY MATERIAL DISCREPANCY BETWEEN THE LOCATION OF THE CORNER AS RESTORED OR REESTABLISHED AND THE LOCATION OF THAT CORNER AS PREVIOUSLY RESTORED OR REESTABLISHED BY DISTANCE AND DIRECTION. SHOW THE DISCREPANCY ON THE PLAN VIEW DRAWING UNDER (D), ABOVE. SHOW THE DISTANCES BETWEEN THE CORNER AS PREVIOUSLY RESTORED OR REESTABLISHED AND (1) THE CORNER AS RESTORED OR REESTABLISHED, AND (2) TO AT LEAST 2 OF THE WITNESS MONUMENTS SHOWN ON THE DRAWING IN (D) ABOVE.

N/A

(F) WAS THE CORNER RESTORED THROUGH ACCEPTANCE OF (1) AN OBLITERATED EVIDENCE LOCATION, OR (2) A FOUND PERPETUATED LOCATION?

(2) A FOUND PERPETUATED LOCATION.

(G&H) WAS THE CORNER REESTABLISHED THROUGH LOST CORNER PROPORTIONATE METHODS? IF SO, SHOW THE METHOD, INCLUDING THE DIRECTIONS AND DISTANCES TO OTHER PUBLIC LAND SURVEY CORNERS USED AS EVIDENCE OR USED FOR PROPORTIONING IN DETERMINING THE CORNER LOCATION.

N/A

CORNER HISTORY

THE ORIGINAL GOVERNMENT CORNER WAS ESTABLISHED BY ROBERT CLARK JR. IN THE FIRST QUARTER OF 1833.

IN A SURVEY DATED 25 JANUARY 1841, JOS. E. FREEMAN VISITED THE CORNER.

IN A SURVEY DATED 15 MAY 1846, SAM WILTSE VISITED THE CORNER.

IN A SURVEY DATED 1 MARCH 1847, GEORGE STUNTZ ESTABLISHED TWO NEW BEARING TREES.

IN A SURVEY DATED 20 DECEMBER 1854, C.J. OVERTON VISITED THE CORNER.

IN A PLAT OF SURVEY DATED 21 MAY 1992, LARRY AUSTIN REPORTED FINDING A NO. 6 REBAR AT THE CORNER.

SINCE 18 OCTOBER 1992, THIS CORNER HAS BEEN USED IN NUMEROUS SURVEYS NOTING A NO. 6 REBAR AT THE CORNER.

IN A TIE SHEET DATED LAST REVISED 8 DECEMBER 1995, LARRY AUSTIN REPORTED FINDING A 3/4" SMOOTH BAR AT THE CORNER.

SINCE 31 JULY 1997, THIS CORNER HAS BEEN USED IN NUMEROUS SURVEYS NOTING A NO. 6 REBAR AT THE CORNER.

IN A TIE SHEET DATED 3 NOVEMBER 2015, AARON AUSTIN REPORTED FINDING A 3/4" SMOOTH BAR AT THE CORNER.

IN A PLAT OF SURVEY AND SUBSEQUENT TIE SHEET DATED 5 APRIL 2016, AARON AUSTIN REPORTED SETTING A 1" X 24" REBAR WITH A GRANT COUNTY ALUMINUM CAP AT THE CORNER.

IN A PLAT OF SURVEY DATED 10 JANUARY 2017, STANLEY KING REPORTED FINDING A 3/4" REBAR AT THE CORNER.

IN A CERTIFIED SURVEY MAP DATED 17 JANUARY 2017, STANLEY KING REPORTED FINDING A 3/4" IRON ROD AT THE CORNER.

IN A PLAT OF SURVEY DATED 18 JUNE 2019, AARON AUSTIN REPORTED FINDING A REBAR WITH A GRANT COUNTY ALUMINUM CAP AT THE CORNER.

(I) I, JAY P. ADAMS, P.L.S. - 2879, CERTIFY THAT THE CORNER LOCATION SHOWN ON THIS RECORD WAS DETERMINED BY ME OR UNDER MY DIRECTION AND CONTROL AND THAT THIS U.S. PUBLIC LAND SURVEY MONUMENT RECORD IS CORRECT AND COMPLETE TO THE BEST OF MY KNOWLEDGE AND BELIEF.

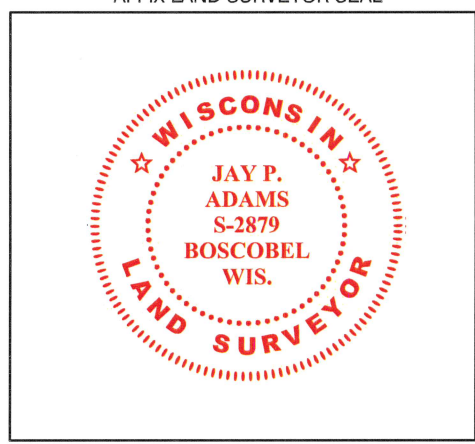
J.P. Adams

SIGNATURE

28 OCTOBER 2022

DATE

AFFIX LAND SURVEYOR SEAL



U.S. PUBLIC LAND SURVEY MONUMENT RECORD - GRANT COUNTY, WI

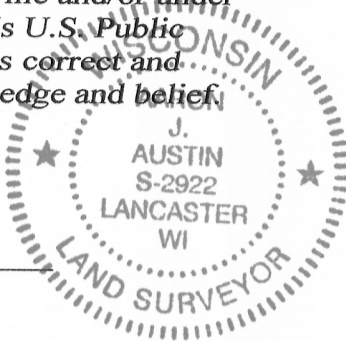
Section 21, Town 4 North Range 1 West, Town of Lima

CERTIFICATE:

I, Aaron J. Austin, Wisconsin Professional Land Surveyor, do hereby certify that the corner location on this record was determined by me and/or under my direct supervision and that this U.S. Public Land Survey Monument Record is correct and complete to the best of my knowledge and belief.

Dated this 5th day of April, 2016.

Aaron J. Austin
 Aaron J. Austin, S-2922



● = CORNER LOCATION

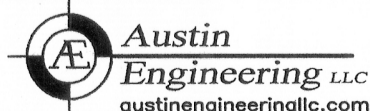
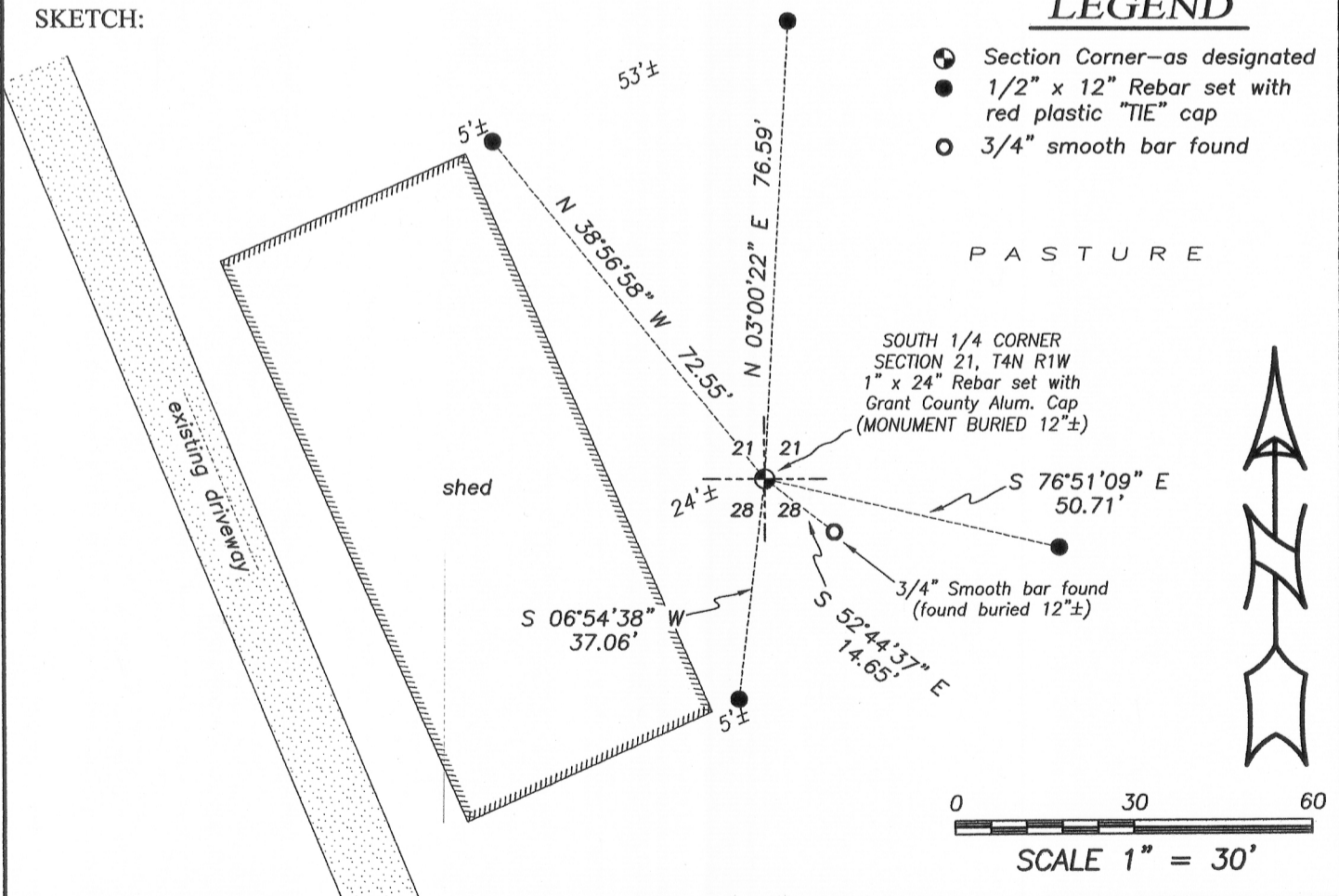
GRANT COUNTY COORDINATES
 NAD 83 (2011 ADJUSTMENT):
 NORTHING: 505,693.10 EASTING: 876,600.02

HISTORY OF CORNER ESTABLISHMENT:

- 1833-Robert Clark set original corner.
- 1841-Freeman tied to the corner on a Survey in Book A, Page 53.
- 1846-Wiltse tied to the corner on a Survey filed in Book B, Page 37.
- 1847-Stuntz tied to the corner on a Survey in Book B, Page 48.
- 1854-Overton tied to the corner on a Survey filed in Book B, Page 362.
- 1992-Larry Austin tied to the corner on a Survey filed in Book R, Page 105 and 106.
- 1994-Larry Austin tied to the corner on a Survey filed in Book U, Page 94.
- 1994-Larry Austin reset the corner and prepared a Grant County Survey Monument Record.
- 1995-Laurence Schmit showed the computed location of the corner on a Survey filed in Book W, Page 63.
- 2004-Larry Austin tied to the corner on Certified Survey Map No. 1131.
- 2006-Larry Austin showed this corner on a Survey filed in Book 19, Page 87.
- 2008-Larry Austin tied to the corner on a Survey filed in Book 24, Page 25.
- 2008-Travis Kramer tied to the corner on Certified Survey Map No. 1443.
- 2010-Travis Kramer tied to the corner on Certified Survey Map No. 1529.
- 2015-Aaron Austin tied to the corner on a Survey filed in Book 37, Page 81 and prepared a U.S. Public Land Survey Monument Record for the corner.

DESCRIPTION OF CORNER AND WITNESS MONUMENTS, references and accessories used to perpetuate the original or re-established location of this corner. Witnesses to corner location Shane Austin.

SKETCH:



4211 HWY 81 E, LANCASTER, WI 53813
 PHONE: 608-723-6363 FAX: 608-723-6702

JOB NO: 15s174
 H:\CRD\15s174
 H:\TIE\T4NR1W\88(A)

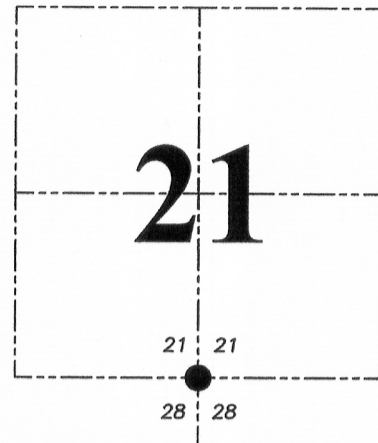
FIELDBOOK: TDSR
 DRAWN BY: AJ AUSTIN
 CREW: SW AUSTIN

SHEET 1 OF 2

APR 15 2016

U.S. PUBLIC LAND SURVEY MONUMENT RECORD - GRANT COUNTY, WI

Section 21, Town 4 North Range 1 West, Town of Lima



● = CORNER LOCATION

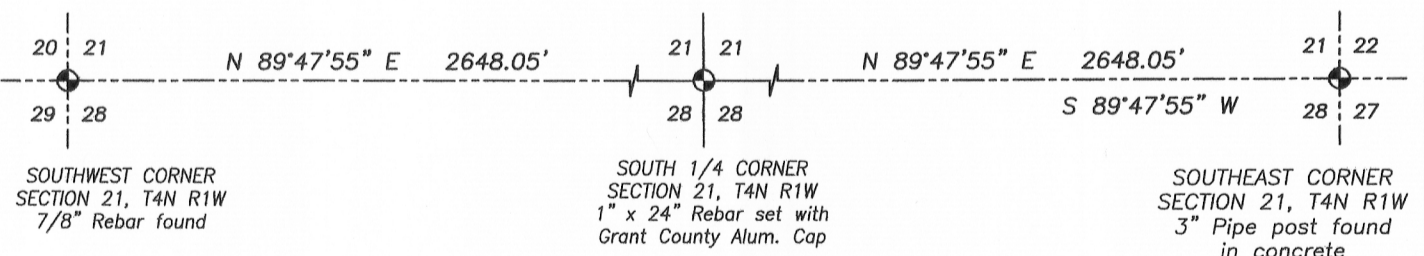
DESCRIPTION OF CORNER EVIDENCE FOUND:

During the course of the Survey I prepared in November of 2015, I found a 3/4" smooth bar buried approximately 12" below the surface in good condition and not disturbed.

At that time I accepted the location of the rebar I found and set 4 new witness corners within the vicinity of the corner. A new U.S. Public Land Survey Monument Record was prepared by me.

In April of 2016 while working on a survey in the Southeast 1/4 of Section 21, I measured to the Southeast corner of Section 21. Once I measured to that corner, I discovered that the rebar I found at the South 1/4 corner was not located midway and on line as noted on the tie sheet filed by Larry Austin.

I then looked for another rebar at the location of midway and on line between the Southwest corner and the Southeast corner of Section 21. No rebar was recovered. I set a 1" x 24" rebar with a Grant County Aluminum Cap at this location. For those surveys located in Section 21 prepared by Larry Austin, Laurence Schmit, and Stan King, it appears that the correct location for the corner was utilized and not the rebar.



Austin Engineering LLC
austinengineeringllc.com

4211 HWY 81 E, LANCASTER, WI 53813
PHONE: 608-723-6363 FAX: 608-723-6702

JOB NO: 15s174
H:\CRD\15s174
H:\TIE\T4NR1W\88(A)

FIELDBOOK: TDSR
DRAWN BY: AJ AUSTIN
CREW: SW AUSTIN

SHEET 2 OF 2

U.S. PUBLIC LAND SURVEY MONUMENT RECORD - GRANT COUNTY, WI

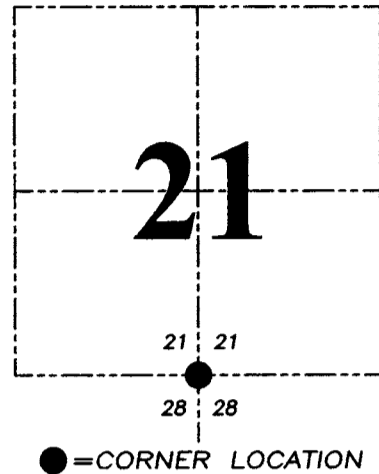
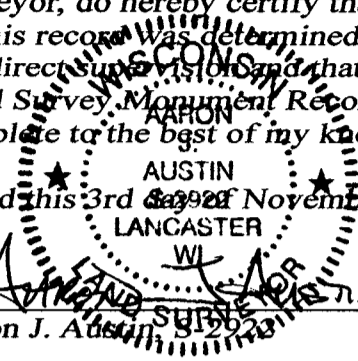
Section 21, Town 4 North Range 1 West, Town of Lima

CERTIFICATE:

I, Aaron J. Austin, Wisconsin Professional Land Surveyor, do hereby certify that the corner location on this record was determined by me and/or under my direct supervision and that this U.S. Public Land Survey Monument Record is correct and complete to the best of my knowledge and belief.

Dated this 3rd day of November, 2015.

Aaron J. Austin
 Aaron J. Austin
 Wisconsin Professional Land Surveyor
 License No. 312623



HISTORY OF CORNER ESTABLISHMENT:

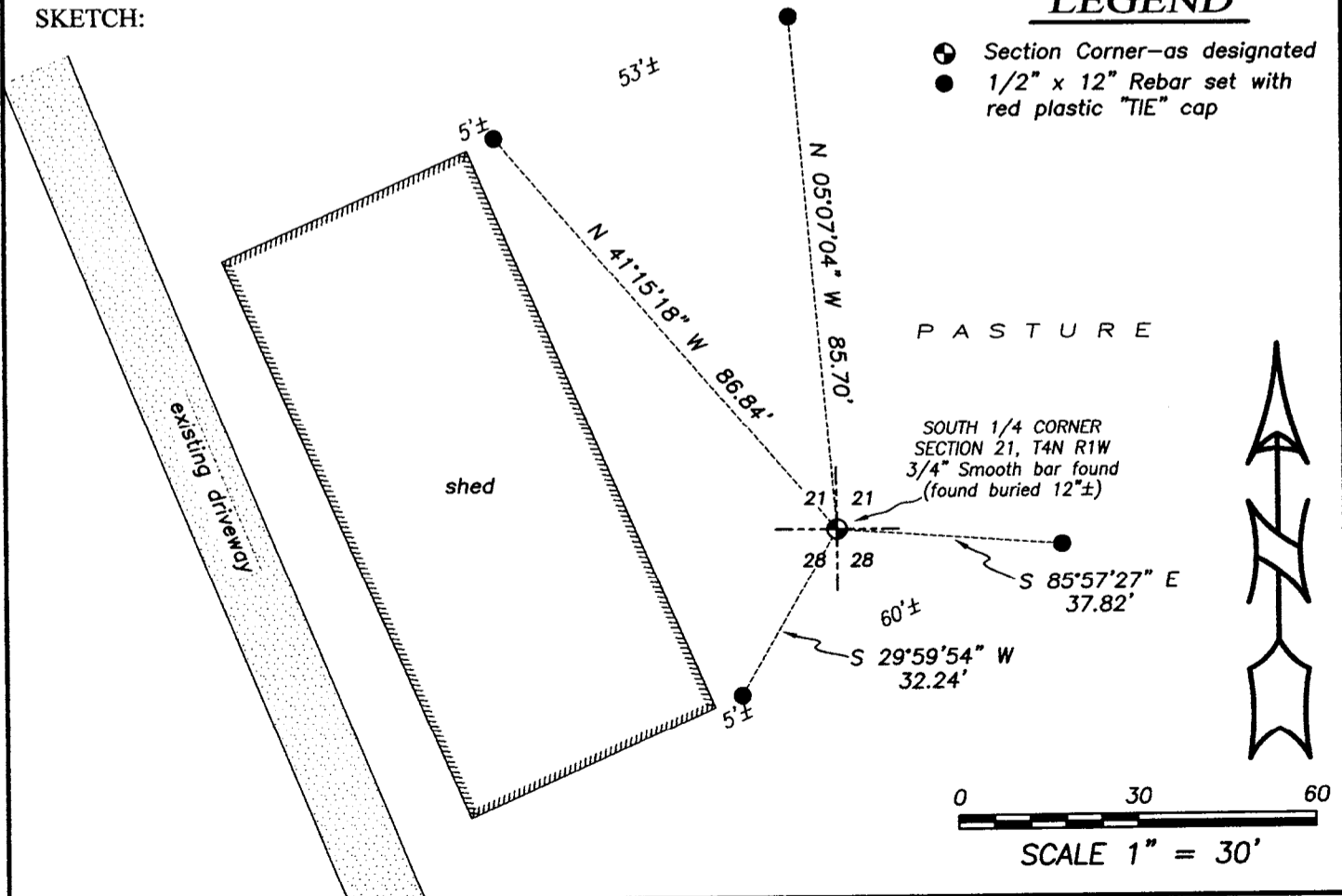
- 1833-Robert Clark set original corner.
 - 1841-Freeman tied to the corner on a Survey in Book A, Page 53.
 - 1846-Wiltse tied to the corner on a Survey filed in Book B, Page 37.
 - 1847-Stuntz tied to the corner on a Survey in Book B, Page 48.
 - 1854-Overton tied to the corner on a Survey filed in Book B, Page 362.
 - 1992-Larry Austin tied to the corner on a Survey filed in Book R, Page 105 and 106.
 - 1994-Larry Austin tied to the corner on a Survey filed in Book U, Page 94.
 - 1994-Larry Austin reset the corner and prepared a Grant County Survey Monument Record.
- Several more recent surveys have accepted the corner location as established by Larry Austin.

DESCRIPTION OF CORNER EVIDENCE FOUND:

I found the corner buried approximately 12" below the surface. I set 4 new witness corners within the vicinity of the corner due to the fact that this area is now a pasture and improvements have been done in the immediate area since the original Grant County Survey Monument Record prepared by Larry Austin in 1994. I have verified this location with E.D.M. and G.P.S. methods.

DESCRIPTION OF CORNER AND WITNESS MONUMENTS, references and accessories used to perpetuate the original or re-established location of this corner. Witnesses to corner location Shane Austin.

SKETCH:



LEGEND

- Section Corner—as designated
- 1/2" x 12" Rebar set with red plastic "TIE" cap



4211 HWY 81 E, LANCASTER, WI 53813
 PHONE: 608-723-6363 FAX: 608-723-6702

JOB NO: 15s174
 H:CRD\15s174
 H:\TIE\T4NR1W\88

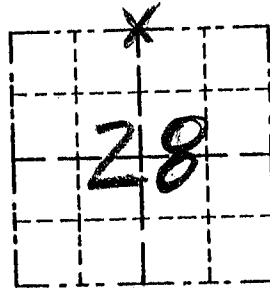
FIELDBOOK: TDSR
 DRAWN BY: AJ AUSTIN
 CREW: SW AUSTIN

GRANT COUNTY

Survey Monument Record

TYPE OF MONUMENT 3/4" SMOOTH BAR
 STATE PLANE COORDINATES: N _____
 E _____
 ELEVATION — M.S.L. DATUM: _____
 THETA ANGLE: _____
 FIELD BOOK: _____
 PAGE _____

CORNER NO. 88
 SECTION 28
 TOWN 4 N
 RANGE 1 W
N 1/4 COR



LOCATION
(Indicated by "X")

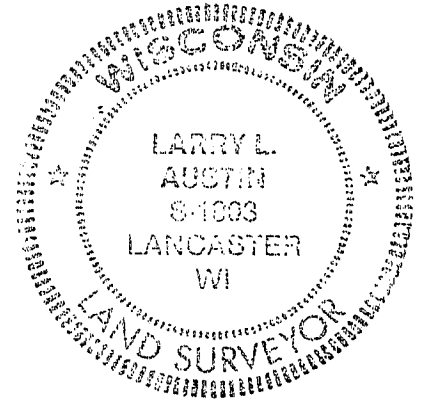
BASIS FOR MONUMENT LOCATION

(Use reverse side if necessary)

Show info such as: History of corner, with reference to Vol. and pg., dates, surveyor; exact description of monument replaced; if location computed, by taped or EDM traverse; landowner, remarks, etc.

SEAL:

No RECORD FOUND OF CORNER
 SINCE ORIGINAL SURVEYS;
 CORNER WAS SET ON LINE &
 MIDWAY BETWEEN THE NE &
 NW CORNERS OF SEC. 28
 VERIFIED BY EDM TRAVERSE



CERTIFIED CORRECT

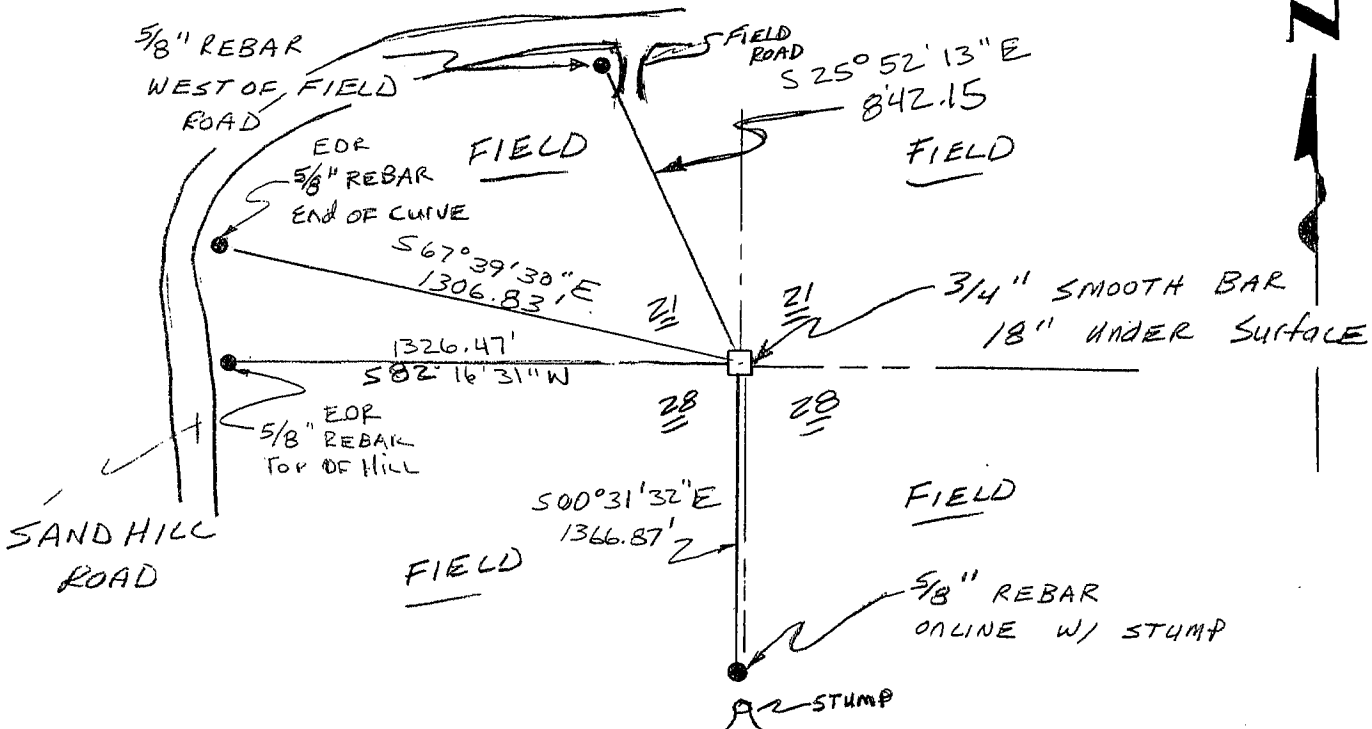
Larry L. Austin
 Registered Land Surveyor

DATE: 11/2/94

REVISED 12/08/95

TIE SKETCH

Show at least three (3) ties and monument



NO SCALE