

REMON
41080

GRANT COUNTY U.S. PUBLIC LAND SURVEY MONUMENT RECORD

INSTRUCTIONS: THIS RECORD SHALL SHOW THE LOCATION OF THE CORNER AND SHALL INCLUDE ALL OF THE FOLLOWING ELEMENTS (A THROUGH I).

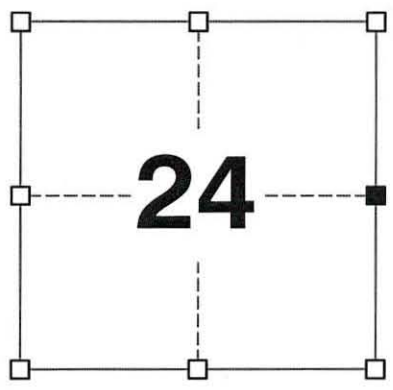
(A) IDENTIFY THE CORNER AS REFERENCED TO THE U.S. PUBLIC LAND SURVEY SYSTEM

■ = CORNER MONUMENT RESTORED

WITNESSES TO CORNER LOCATION:
TODD C. PATTON
TYLER D. ATKINSON

GEOGRAPHIC COORDINATES,
NAD 83 (2011) ADJUSTMENT:
LATITUDE: 42° 48' 20.57737"
LONGITUDE: 90° 25' 36.44499"

WISCONSIN COORDINATE REFERENCE SYSTEM (WISCRS),
GRANT COUNTY, NAD 83 (2011) ADJUSTMENT:
NORTHING: 508,461.150
EASTING: 895,159.482



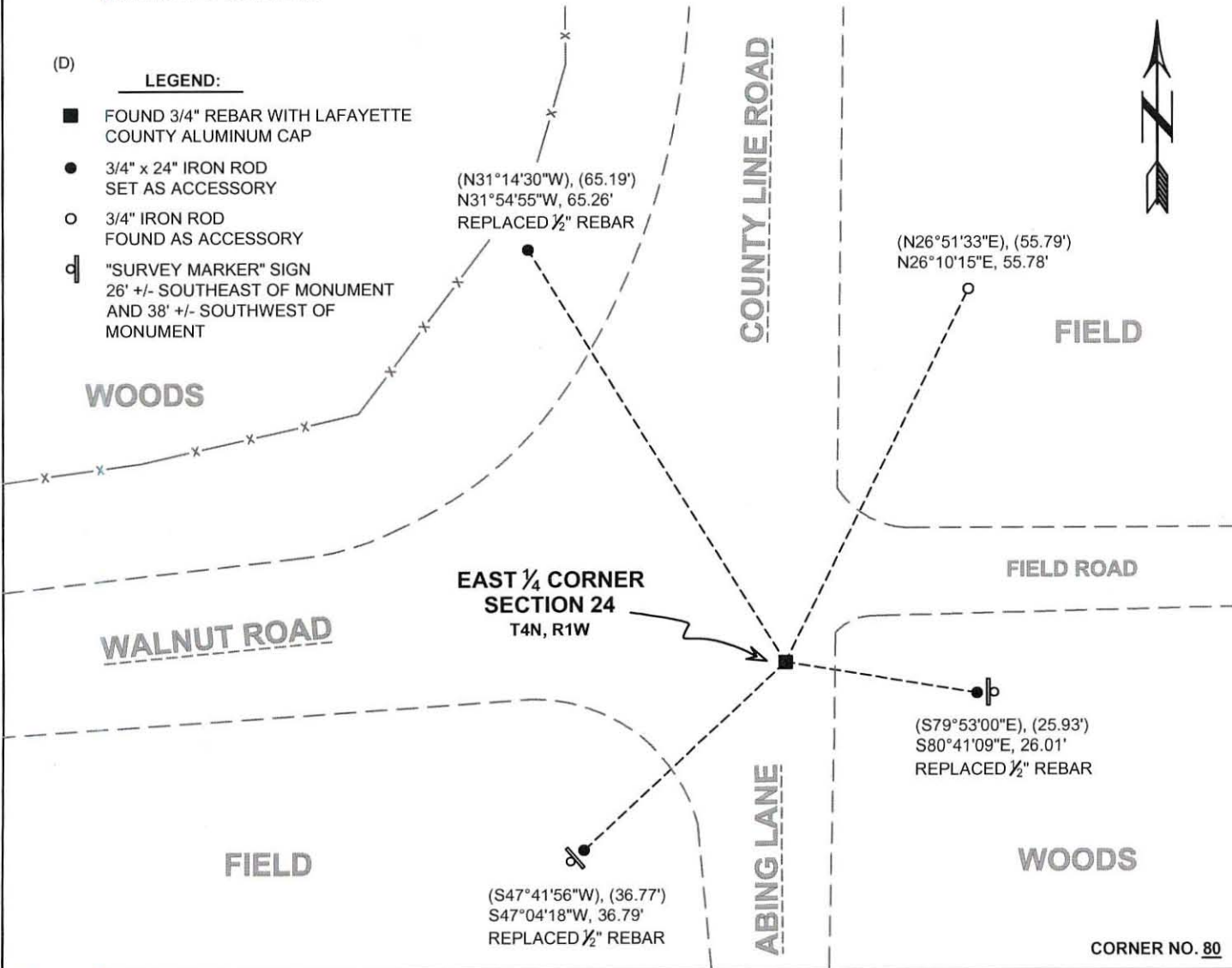
SECTION 24
TOWNSHIP 4 NORTH, RANGE 1 WEST
TOWN OF LIMA

(B) DESCRIBE ANY RECORD EVIDENCE, MONUMENT EVIDENCE, OCCUPATIONAL EVIDENCE, TESTIMONIAL EVIDENCE OR ANY OTHER MATERIAL EVIDENCE YOU CONSIDERED, AND WHETHER THE MONUMENT WAS FOUND OR PLACED.

I COULD FIND NO MONUMENTS OR BEARING TREES FROM THE ORIGINAL GOVERNMENT SURVEY OR THE HISTORIC COUNTY SURVEYOR'S SUBSEQUENT RESURVEYS. I RECOVERED THE 3/4" REBAR WITH A LAFAYETTE COUNTY CAP REPORTED BY AARON AUSTIN. I ACCEPTED THIS LOCATION AS THE BEST AVAILABLE EVIDENCE OF THE ORIGINAL GOVERNMENT CORNER AND LEFT IT IN PLACE.

(C) IN THE PLAN VIEW DRAWING BELOW, PROVIDE REFERENCE TIES TO AT LEAST 4 WITNESS MONUMENTS. WITNESS MONUMENTS SHALL BE MADE OF CONCRETE, NATURAL STONE, IRON, BEARING TREES OR ANY OTHER EQUALLY DURABLE MATERIAL. DEPICT THE RELEVANT MONUMENTS AND REFERENCE TIES WITH SUFFICIENT DETAIL TO ENABLE ACCURATE RELOCATION OF THE CORNER IF THE CORNER MONUMENT IS DISTURBED.

- (D) **LEGEND:**
- FOUND 3/4" REBAR WITH LAFAYETTE COUNTY ALUMINUM CAP
 - 3/4" x 24" IRON ROD SET AS ACCESSORY
 - 3/4" IRON ROD FOUND AS ACCESSORY
 - ⊥ "SURVEY MARKER" SIGN 26' +/- SOUTHEAST OF MONUMENT AND 38' +/- SOUTHWEST OF MONUMENT



CORNER NO. 80

41080

(E) DESCRIBE ANY MATERIAL DISCREPANCY BETWEEN THE LOCATION OF THE CORNER AS RESTORED OR REESTABLISHED AND THE LOCATION OF THAT CORNER AS PREVIOUSLY RESTORED OR REESTABLISHED BY DISTANCE AND DIRECTION. SHOW THE DISCREPANCY ON THE PLAN VIEW DRAWING UNDER (D), ABOVE. SHOW THE DISTANCES BETWEEN THE CORNER AS PREVIOUSLY RESTORED OR REESTABLISHED AND (1) THE CORNER AS RESTORED OR REESTABLISHED, AND (2) TO AT LEAST 2 OF THE WITNESS MONUMENTS SHOWN ON THE DRAWING IN (D) ABOVE.

N/A

(F) WAS THE CORNER RESTORED THROUGH ACCEPTANCE OF (1) AN OBLITERATED EVIDENCE LOCATION, OR (2) A FOUND PERPETUATED LOCATION?

(2) A FOUND PERPETUATED LOCATION.

(G&H) WAS THE CORNER REESTABLISHED THROUGH LOST CORNER PROPORTIONATE METHODS? IF SO, SHOW THE METHOD, INCLUDING THE DIRECTIONS AND DISTANCES TO OTHER PUBLIC LAND SURVEY CORNERS USED AS EVIDENCE OR USED FOR PROPORTIONING IN DETERMINING THE CORNER LOCATION.

N/A

CORNER HISTORY

THE ORIGINAL GOVERNMENT CORNER WAS ESTABLISHED BY SYLVESTER SIBLEY IN THE SECOND QUARTER OF 1832.

IN A SURVEY DATED 27 MARCH 1840, JOS. E. FREEMAN VISITED THE CORNER.

IN SURVEYS DATED 14 OCTOBER 1889, JOHN DUNSTAN VISITED THE CORNER.

IN A PLAT OF SURVEY AND SUBSEQUENT TIE SHEET DATED NOVEMBER 1992, BRUCE BOWDEN REPORTED SETTING A NO. 6 X 24" REBAR AT THE CORNER.

IN A PLAT OF SURVEY DATED 21 AUGUST 1995, LARRY AUSTIN REPORTED FINDING A 1" IRON BAR AT THE CORNER.

IN A PLAT OF SURVEY LAST REVISED 27 APRIL 1999, LARRY AUSTIN REPORTED FINDING A NO. 6 REBAR AT THE CORNER.

IN A PLAT OF SURVEY DATED 25 SEPTEMBER 2000, LARRY AUSTIN REPORTED FINDING A NO. 6 REBAR AT THE CORNER.

IN A PLAT OF SURVEY DATED 10 DECEMBER 2000, LARRY AUSTIN REPORTED FINDING A NO. 6 REBAR AT THE CORNER.

IN A PLAT OF SURVEY DATED 15 NOVEMBER 2004, LAURENCE SCHMIT REPORTED FINDING A NO. 10 REBAR AT THE CORNER.

IN A PLAT OF SURVEY DATED 11 AUGUST 2010, LARRY AUSTIN REPORTED FINDING A NO. 6 REBAR AT THE CORNER.

IN A PLAT OF SURVEY DATED 8 OCTOBER 2012, AARON AUSTIN REPORTED FINDING A NO. 6 REBAR AT THE CORNER.

IN A TIE SHEET DATED 26 MAY 2016, AARON AUSTIN REPORTED FINDING THE 3/4" REBAR SET BY BOWDEN AND PLACED A LAFAYETTE COUNTY CAP ON THE REBAR.

IN A PLAT OF SURVEY DATED 24 APRIL 2018, AARON AUSTIN REPORTED FINDING AN ALUMINUM MONUMENT WITH A LAFAYETTE COUNTY CAP AT THE CORNER.

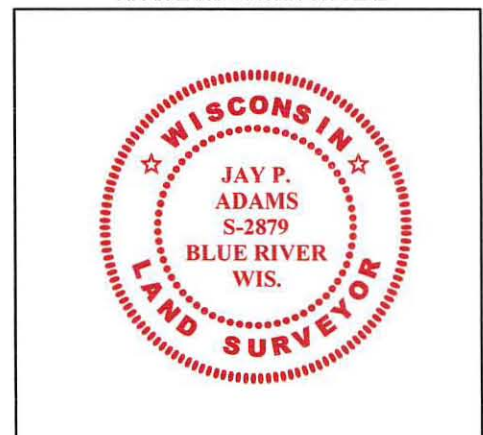
AFFIX LAND SURVEYOR SEAL

(I) I, JAY P. ADAMS, P.L.S. - 2879, CERTIFY THAT THE CORNER LOCATION SHOWN ON THIS RECORD WAS DETERMINED BY ME OR UNDER MY DIRECTION AND CONTROL AND THAT THIS U.S. PUBLIC LAND SURVEY MONUMENT RECORD IS CORRECT AND COMPLETE TO THE BEST OF MY KNOWLEDGE AND BELIEF.

SIGNATURE

16 MARCH 2020

DATE



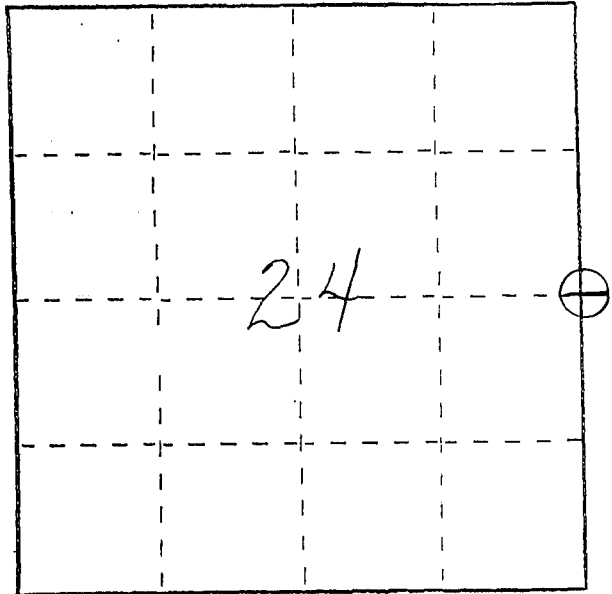
U. S. PUBLIC LAND SURVEY MONUMENT RECORD

INSTRUCTIONS: This record shall show the location of the corner and shall include all of the following nine elements (a through i).

(a) Identify the corner by reference to the U.S. public land survey system.

○ = Corner monument restored.

East 1/4 corner of Section 24,
Town 4 North, Range 1 West,
Lima Township, Grant County,
Wisconsin.



(b) Describe any record evidence, monument evidence, occupational evidence, testimonial evidence or any other material evidence you considered, and whether the monument was found or placed.

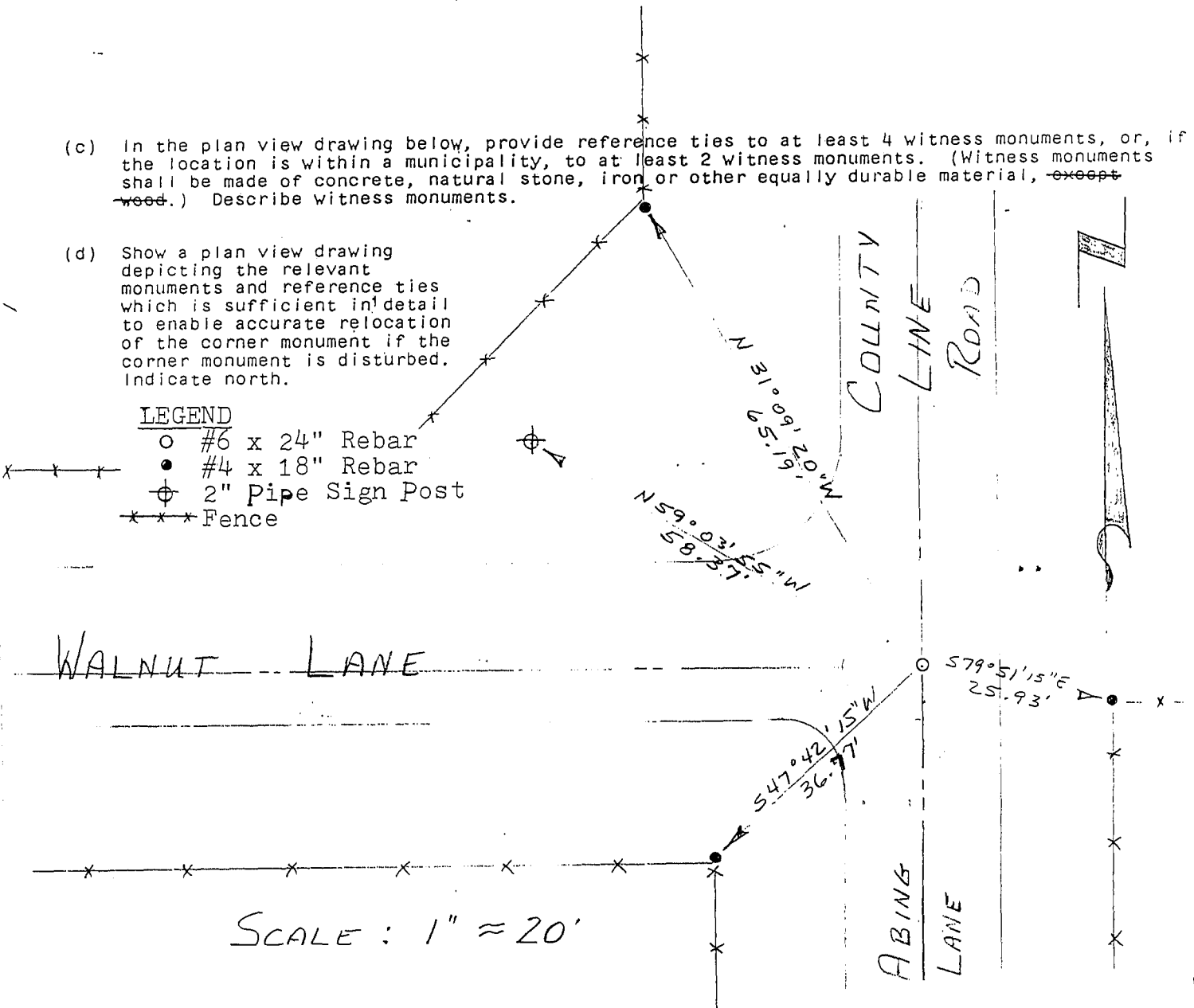
Monument set from existing physical evidence of roads and fences after verification by proportionate measurements from an EDM traverse of the area.

(c) In the plan view drawing below, provide reference ties to at least 4 witness monuments, or, if the location is within a municipality, to at least 2 witness monuments. (Witness monuments shall be made of concrete, natural stone, iron or other equally durable material, ~~except~~ wood.) Describe witness monuments.

(d) Show a plan view drawing depicting the relevant monuments and reference ties which is sufficient in detail to enable accurate relocation of the corner monument if the corner monument is disturbed. Indicate north.

LEGEND

- #6 x 24" Rebar
- #4 x 18" Rebar
- ⊕ 2" Pipe Sign Post
- *** Fence



(e) Describe any material discrepancy between the location of the corner as restored or reestablished and the location of that corner as previously restored or reestablished by distance and direction. Show the discrepancy on the plan view drawing under (d), above. Show the distances between the corner as previously restored or reestablished and (1) the corner as restored or reestablished, and (2) to at least 2 of the witness monuments shown on the drawing in (d), above.

None.

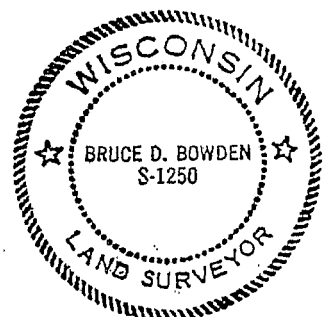
(f) Was the corner restored through acceptance of (1) an obliterated evidence location, or, (2) a found perpetuated location?

(1) an obliterated evidence location

(g&h) Was the corner reestablished through lost corner proportionate methods? If so, show the method, including the directions and distances to other public land survey corners used as evidence or used for proportioning in determining the corner location?

No.

Affix Land Surveyor Seal



(i) I, Bruce D. Bowden, R.L.S. - 1250
(type or print name) certify that the corner location shown on this record was determined by me or under my direction and control and that this U.S. Public Land Survey Monument Record is correct and complete to the best of my knowledge and belief.

Bruce D. Bowden
Signature

Nov 29, 1992
Date