

REMON

41079

GRANT COUNTY U.S. PUBLIC LAND SURVEY MONUMENT RECORD

INSTRUCTIONS: THIS RECORD SHALL SHOW THE LOCATION OF THE CORNER AND SHALL INCLUDE ALL OF THE FOLLOWING ELEMENTS (A THROUGH I).

(A) IDENTIFY THE CORNER AS REFERENCED TO THE U.S. PUBLIC LAND SURVEY SYSTEM

■ = CORNER MONUMENT RESTORED

WITNESSES TO CORNER LOCATION:

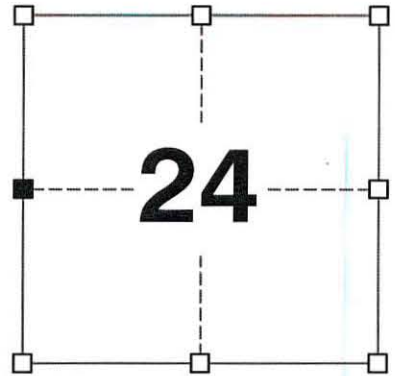
JAY P. ADAMS
TYLER D. ATKINSON

GEOGRAPHIC COORDINATES,
NAD 83 (2011) ADJUSTMENT:

LATITUDE: 42° 48' 21.04903"
LONGITUDE: 90° 26' 47.99782"

WISCONSIN COORDINATE REFERENCE SYSTEM (WISCRS),
GRANT COUNTY, NAD 83 (2011) ADJUSTMENT:

NORTHING: 508,485.922
EASTING: 889,825.148



SECTION 24
TOWNSHIP 4 NORTH, RANGE 1 WEST
TOWN OF LIMA

(B) DESCRIBE ANY RECORD EVIDENCE, MONUMENT EVIDENCE, OCCUPATIONAL EVIDENCE, TESTIMONIAL EVIDENCE OR ANY OTHER MATERIAL EVIDENCE YOU CONSIDERED, AND WHETHER THE MONUMENT WAS FOUND OR PLACED.

I COULD FIND NO MONUMENTS FROM THE ORIGINAL GOVERNMENT SURVEY OR THE HISTORIC COUNTY SURVEYOR'S SUBSEQUENT RESURVEYS. I RECOVERED THE 3/4" REBAR REPORTED BY LARRY AUSTIN. I ACCEPTED THIS LOCATION AS THE BEST AVAILABLE EVIDENCE OF THE ORIGINAL GOVERNMENT CORNER AND REMONUMENTED IT WITH A 1-1/4" x 30" REBAR.

NOTE: I INVESTIGATED NUMEROUS TREES AT THE CORNER LOCATION FOR THE POSSIBILITY OF BEING A BEARING TREE BUT EVENTUALLY RULED OUT ALL TREES AND STUMPS AS INCONSISTENT WITH OTHER CORNERS AND OCCUPATIONAL EVIDENCE.

(C) IN THE PLAN VIEW DRAWING BELOW, PROVIDE REFERENCE TIES TO AT LEAST 4 WITNESS MONUMENTS. WITNESS MONUMENTS SHALL BE MADE OF CONCRETE, NATURAL STONE, IRON, BEARING TREES OR ANY OTHER EQUALLY DURABLE MATERIAL. DEPICT THE RELEVANT MONUMENTS AND REFERENCE TIES WITH SUFFICIENT DETAIL TO ENABLE ACCURATE RELOCATION OF THE CORNER IF THE CORNER MONUMENT IS DISTURBED.

(D)

MARSH

LEGEND:

- SET 1-1/4" x 30" REBAR
- 3/4" x 24" IRON ROD SET AS ACCESSORY
- RAIL ROAD SPIKE FOUND AS ACCESSORY
- "SURVEY MARKER" SIGN 6" +/- WEST OF MONUMENT

N70°46'02"E, 76.09'
4' WEST OF ROAD EDGE

N75°56'30"W, 20.14'
2' EAST OF WOOD POST

WEST 1/4 CORNER
SECTION 24
T4N, R1W

MOCKING BIRD ROAD



MARSH

S30°47'36"W, 38.65'
2' EAST OF WOOD POST

UNNAMED CREEK

(S59°41'36"E), (80.91')
S60°34'50"E, 80.84'
CENTER OF BRIDGE

MARSH

CORNER NO. 79

41079

(E) DESCRIBE ANY MATERIAL DISCREPANCY BETWEEN THE LOCATION OF THE CORNER AS RESTORED OR REESTABLISHED AND THE LOCATION OF THAT CORNER AS PREVIOUSLY RESTORED OR REESTABLISHED BY DISTANCE AND DIRECTION. SHOW THE DISCREPANCY ON THE PLAN VIEW DRAWING UNDER (D), ABOVE. SHOW THE DISTANCES BETWEEN THE CORNER AS PREVIOUSLY RESTORED OR REESTABLISHED AND (1) THE CORNER AS RESTORED OR REESTABLISHED, AND (2) TO AT LEAST 2 OF THE WITNESS MONUMENTS SHOWN ON THE DRAWING IN (D) ABOVE.

N/A

(F) WAS THE CORNER RESTORED THROUGH ACCEPTANCE OF (1) AN OBLITERATED EVIDENCE LOCATION, OR (2) A FOUND PERPETUATED LOCATION?

(2) A FOUND PERPETUATED LOCATION.

(G&H) WAS THE CORNER REESTABLISHED THROUGH LOST CORNER PROPORTIONATE METHODS? IF SO, SHOW THE METHOD, INCLUDING THE DIRECTIONS AND DISTANCES TO OTHER PUBLIC LAND SURVEY CORNERS USED AS EVIDENCE OR USED FOR PROPORTIONING IN DETERMINING THE CORNER LOCATION.

N/A

CORNER HISTORY

THE ORIGINAL GOVERNMENT CORNER WAS ESTABLISHED BY ROBERT CLARK JR. IN THE FIRST QUARTER OF 1833, WHERE HE SET A POST IN THE STREAM.

IN A SURVEY DATED 27 MARCH 1840, JOS. E. FREEMAN REPORTED BOTH ORIGINAL BEARING TREES AT RECORD SIZE AND LOCATIONS.

IN A SURVEY DATED 10 JANUARY 1842, JOS. E. FREEMAN VISITED THE CORNER.

IN A SURVEY DATED FEBRUARY 1852, C.J. OVERTON VISITED THE CORNER.

IN A SURVEY DATED 1 DECEMBER 1854, C.J. OVERTON ESTABLISHED TWO BEARING TREES AND SHOWED THE CORNER IN THE CREEK.

IN A PLAT OF SURVEY AND SUBSEQUENT TIE SHEET DATED NOVEMBER 1992, BRUCE BOWDEN REPORTED SETTING A NO. 6 X 24" REBAR AT THE CORNER.

SINCE 20 MAY 1998, THIS CORNER HAS BEEN USED IN NUMEROUS SURVEYS NOTING A NO. 6 REBAR AT THE CORNER.

IN A PLAT OF SURVEY DATED 15 NOVEMBER 2004, LAURENCE SCHMIT REPORTED FINDING AN ALUMINUM CAPPED REBAR AT THE CORNER.

SINCE 8 SEPTEMBER 2005, THIS CORNER HAS BEEN USED IN NUMEROUS SURVEYS NOTING A NO. 6 REBAR AT THE CORNER.

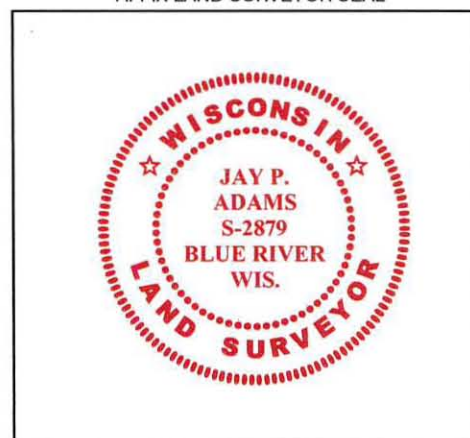
(I) I, JAY P. ADAMS, P.L.S. - 2879, CERTIFY THAT THE CORNER LOCATION SHOWN ON THIS RECORD WAS DETERMINED BY ME OR UNDER MY DIRECTION AND CONTROL AND THAT THIS U.S. PUBLIC LAND SURVEY MONUMENT RECORD IS CORRECT AND COMPLETE TO THE BEST OF MY KNOWLEDGE AND BELIEF.

SIGNATURE

02 APRIL 2020

DATE

AFFIX LAND SURVEYOR SEAL

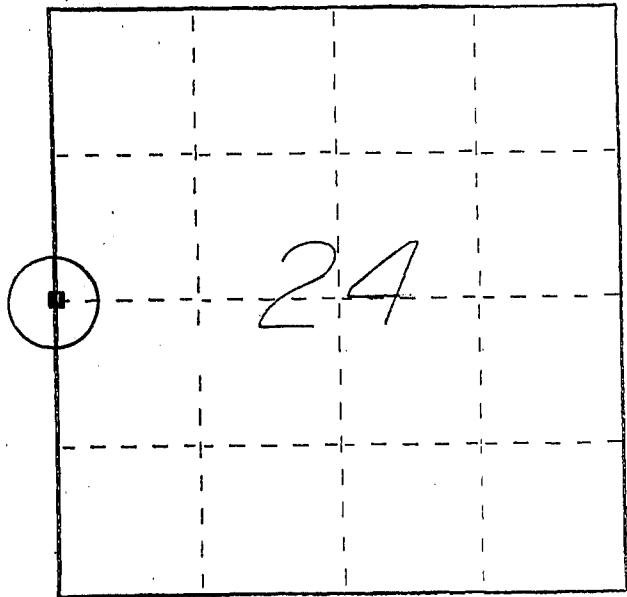


U. S. PUBLIC LAND SURVEY MONUMENT RECORD

INSTRUCTIONS: This record shall show the location of the corner and shall include all of the following nine elements (a through i).

- (a) Identify the corner by reference to the U.S. public land survey system.
- = Corner monument restored.

WEST 1/4 CORNER
 SECTION 24
 TOWN 4 NORTH
 RANGE 1 WEST
 LIMA TOWNSHIP
 GRANT COUNTY, WISC.



- (b) Describe any record evidence, monument evidence, occupational evidence, testimonial evidence or any other material evidence you considered, and whether the monument was found or placed.

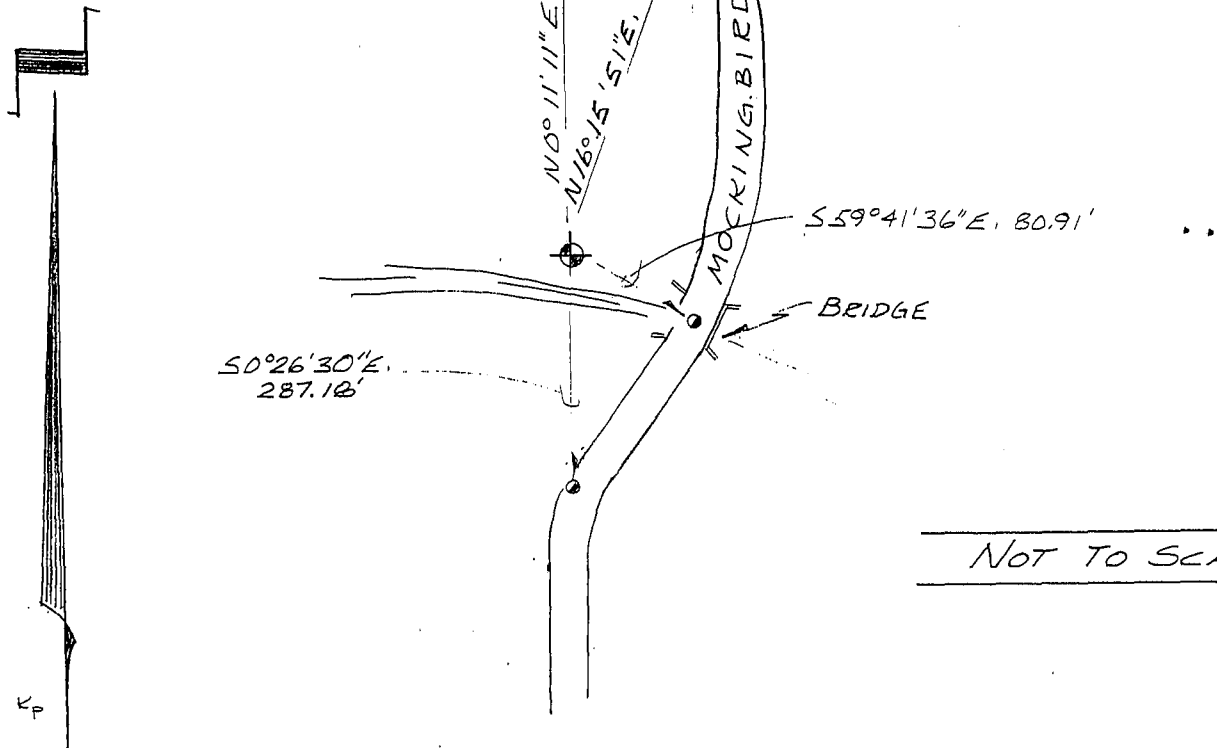
MONUMENT SET FROM EXISTING PHYSICAL EVIDENCE OF
 ROADS AND FENCES AFTER VERIFICATION BY
 PROPORTIONATE MEASUREMENTS FROM AN
 EDM TRAVERSE OF THE AREA.

- (c) In the plan view drawing below, provide reference ties to at least 4 witness monuments, or, if the location is within a municipality, to at least 2 witness monuments. (Witness monuments shall be made of concrete, natural stone, iron or other equally durable material, ~~except~~ wood.) Describe witness monuments.

- (d) Show a plan view drawing depicting the relevant monuments and reference ties which is sufficient in detail to enable accurate relocation of the corner monument if the corner monument is disturbed. Indicate north.

LEGEND

- ⊕ No. 6 x 24" REBAR SET @ W 1/4 CORNER SEC. 24
- RAILROAD SPIKE SET



NOT TO SCALE

(e) Describe any material discrepancy between the location of the corner as restored or reestablished and the location of that corner as previously restored or reestablished by distance and direction. Show the discrepancy on the plan view drawing under (d), above. Show the distances between the corner as previously restored or reestablished and (1) the corner as restored or reestablished, and (2) to at least 2 of the witness monuments shown on the drawing in (d), above.

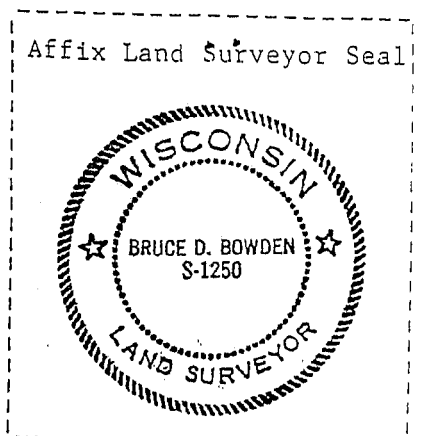
None.

(f) Was the corner restored through acceptance of (1) an obliterated evidence location, or, (2) a found perpetuated location?

(1) an obliterated evidence location

(g&h) Was the corner reestablished through lost corner proportionate methods? If so, show the method, including the directions and distances to other public land survey corners used as evidence or used for proportioning in determining the corner location?

No.



(i) I, Bruce D. Bowden, R.L.S. - 1250
(type or print name) certify that the corner location shown on this record was determined by me or under my direction and control and that this U.S. Public Land Survey Monument Record is correct and complete to the best of my knowledge and belief.

Bruce D. Bowden
Signature

Nov 29, 1992
Date