

REMON
41071

GRANT COUNTY U.S. PUBLIC LAND SURVEY MONUMENT RECORD

INSTRUCTIONS: THIS RECORD SHALL SHOW THE LOCATION OF THE CORNER AND SHALL INCLUDE ALL OF THE FOLLOWING ELEMENTS (A THROUGH I).

- (A) IDENTIFY THE CORNER AS REFERENCED TO THE U.S. PUBLIC LAND SURVEY SYSTEM

■ = CORNER MONUMENT RESTORED

WITNESSES TO CORNER LOCATION:

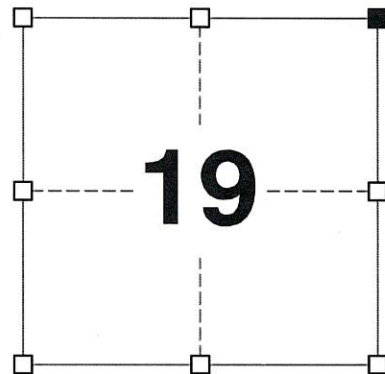
TODD C. PATTON
PAIGE O. JELINEK

GEOGRAPHIC COORDINATES,
NAD 83 (2011) ADJUSTMENT:

LATITUDE: 42° 48' 46.43515"
LONGITUDE: 90° 31' 33.62192"

WISCONSIN COORDINATE REFERENCE SYSTEM (WISCRS),
GRANT COUNTY, NAD 83 (2011) ADJUSTMENT:

NORTHING: 510,976.899
EASTING: 868,524.091



SECTION 19
TOWNSHIP 4 NORTH, RANGE 1 WEST
TOWN OF LIMA

- (B) DESCRIBE ANY RECORD EVIDENCE, MONUMENT EVIDENCE, OCCUPATIONAL EVIDENCE, TESTIMONIAL EVIDENCE OR ANY OTHER MATERIAL EVIDENCE YOU CONSIDERED, AND WHETHER THE MONUMENT WAS FOUND OR PLACED.

I COULD FIND NO MONUMENTS FROM THE ORIGINAL GOVERNMENT SURVEY OR THE HISTORIC COUNTY SURVEYOR'S SUBSEQUENT RESURVEYS. I RECOVERED THE 3/4" REBAR REPORTED BY LARRY AUSTIN. I ACCEPTED THIS LOCATION AS THE BEST AVAILABLE EVIDENCE OF THE ORIGINAL GOVERNMENT CORNER AND LEFT IT IN PLACE.

- (C) IN THE PLAN VIEW DRAWING BELOW, PROVIDE REFERENCE TIES TO AT LEAST 4 WITNESS MONUMENTS. WITNESS MONUMENTS SHALL BE MADE OF CONCRETE, NATURAL STONE, IRON, BEARING TREES OR ANY OTHER EQUALLY DURABLE MATERIAL. DEPICT THE RELEVANT MONUMENTS AND REFERENCE TIES WITH SUFFICIENT DETAIL TO ENABLE ACCURATE RELOCATION OF THE CORNER IF THE CORNER MONUMENT IS DISTURBED.

- (D)

LEGEND:

- FOUND 3/4" REBAR
- 3/4" x 24" IRON ROD SET AS ACCESSORY
- WISDOT REFERENCE BRASS CAP IN CONCRETE FOUND
- ⊥ "SURVEY MARKER" SIGN 52' +/- SOUTHWEST OF MONUMENT

FIELD

FIELD

NORTHEAST
CORNER
SECTION 19
T4N, R1W



N73°12'57"W, 87.25'
6' NORTH OF ROAD EDGE

N42°07'06"E, 38.68'
15' EAST OF ROAD EDGE

CONDRIY ROAD

S84°08'48"W, 81.56'
6' SOUTH OF ROAD EDGE

DRIVEWAY

NEW HORIZON'S LOT

PASTURE

CTH D

S17°26'53"E, 87.28'
15' EAST OF ROAD EDGE

CORNER NO. 71

(E) DESCRIBE ANY MATERIAL DISCREPANCY BETWEEN THE LOCATION OF THE CORNER AS RESTORED OR REESTABLISHED AND THE LOCATION OF THAT CORNER AS PREVIOUSLY RESTORED OR REESTABLISHED BY DISTANCE AND DIRECTION. SHOW THE DISCREPANCY ON THE PLAN VIEW DRAWING UNDER (D), ABOVE. SHOW THE DISTANCES BETWEEN THE CORNER AS PREVIOUSLY RESTORED OR REESTABLISHED AND (1) THE CORNER AS RESTORED OR REESTABLISHED, AND (2) TO AT LEAST 2 OF THE WITNESS MONUMENTS SHOWN ON THE DRAWING IN (D) ABOVE.

N/A

(F) WAS THE CORNER RESTORED THROUGH ACCEPTANCE OF (1) AN OBLITERATED EVIDENCE LOCATION, OR (2) A FOUND PERPETUATED LOCATION?

(2) A FOUND PERPETUATED LOCATION.

(G&H) WAS THE CORNER REESTABLISHED THROUGH LOST CORNER PROPORTIONATE METHODS? IF SO, SHOW THE METHOD, INCLUDING THE DIRECTIONS AND DISTANCES TO OTHER PUBLIC LAND SURVEY CORNERS USED AS EVIDENCE OR USED FOR PROPORTIONING IN DETERMINING THE CORNER LOCATION.

N/A

CORNER HISTORY

THE ORIGINAL GOVERNMENT CORNER WAS ESTABLISHED BY ROBERT CLARK JR. IN THE FIRST QUARTER OF 1833.

IN SURVEYS DATED NOVEMBER 1842, SAM WILTSE FOUND THE ORIGINAL CORNER AND BOTH BEARING TREES.

IN A SURVEY DATED 20 MARCH 1843, GEORGE MCFALL FOUND THE ORIGINAL CORNER.

IN A TIE SHEET DATED JUNE 1971, OSCAR DITTRICH NOTED THE CORNER LOCATION BUT DID NOT STATE THE MONUMENT TYPE.

IN A PLAT OF SURVEY DATED 12 DECEMBER 1978, LAURENCE SCHMIT NOTED THE CORNER.

IN A PLAT OF SURVEY DATED 18 NOVEMBER 1980, DAVID DAVIS REPORTED SETTING A RAIL ROAD SPIKE AT THE CORNER.

IN A SURVEY PLAT DATED 19 NOVEMBER 1997 AND SUBSEQUENT TIE SHEET DATED 15 DECEMBER 1997, LARRY AUSTIN REPORTED SETTING A 3/4" X 24" REBAR AT THE CORNER.

SINCE 19 NOVEMBER 1997, THIS CORNER HAS BEEN USED IN NUMEROUS SURVEYS NOTING A NO. 6 REBAR AT THE CORNER.

AFFIX LAND SURVEYOR SEAL

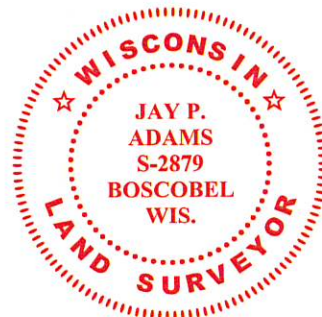
(I) I, JAY P. ADAMS, P.L.S. - 2879, CERTIFY THAT THE CORNER LOCATION SHOWN ON THIS RECORD WAS DETERMINED BY ME OR UNDER MY DIRECTION AND CONTROL AND THAT THIS U.S. PUBLIC LAND SURVEY MONUMENT RECORD IS CORRECT AND COMPLETE TO THE BEST OF MY KNOWLEDGE AND BELIEF.



SIGNATURE

24 SEPTEMBER 2022

DATE

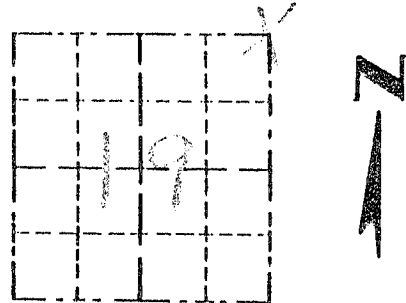


Survey Monument Record

TYPE OF MONUMENT 3/4" x 24" IRON
BAR SET

CORNER NO. 71
SECTION 17
TOWN 421
RANGE 100

FIELD BOOK: 96-22 (A)
PAGE 25



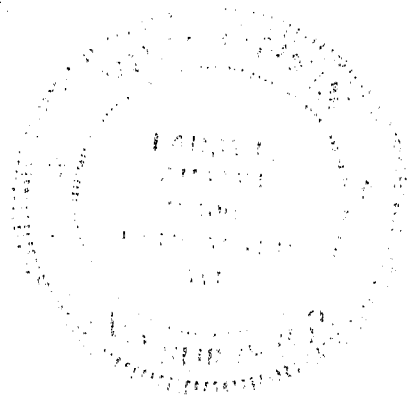
LOCATION
(Indicated by "X")

BASIS FOR MONUMENT LOCATION

(Use reverse side if necessary)

Show info such as: History of corner, with reference to Vol. and pg, dates, surveyor; exact description of monument replaced; if location computed, by taped or EDM traverse; landowner, remarks, etc.

SEAL:



CORNER SET IN 1833
BY ROBERT CLARK.
IN 1978 LAURENCE SCHMIT
TIED TO CORNER, NO
MONUMENT PLACED. IN
1980 DAVID DAVIS SET
A RAILROAD SPIKE, MONUMENT
NOT FOUND. I SET THE
CORNER AT AN OCCUPIED
LOCATION WHICH FIT BOTH
L. SCHMIT AND D. DAVIS. VERIFIED
IT LOCATION USING EDM METHODS.

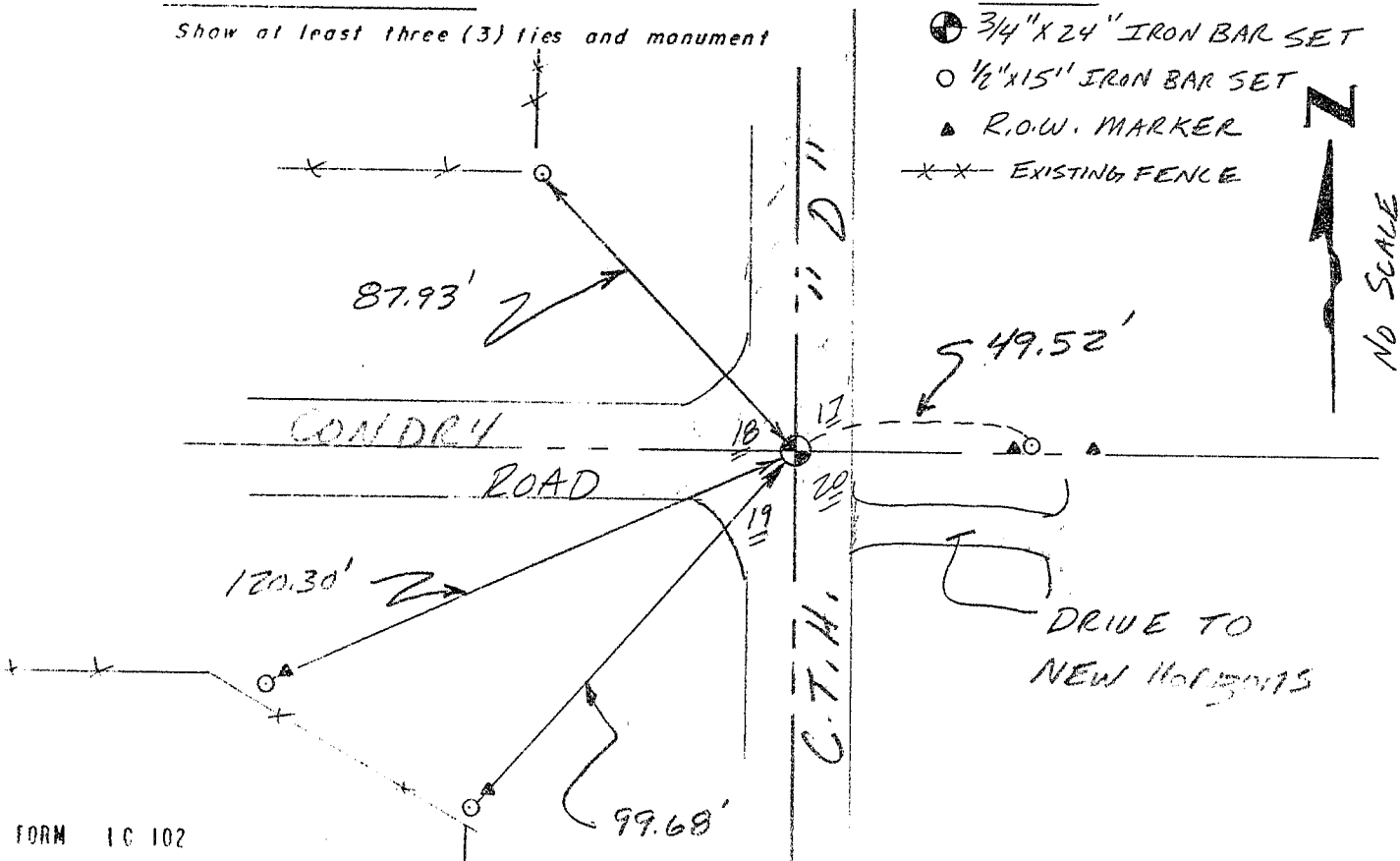
CERTIFIED CORRECT

[Signature]
Registered Land Surveyor

DATE: 12-15-97

TIE SKETCH

Show at least three (3) ties and monument



RECORD OF U.S. PUBLIC LAND SURVEY CONTROL STATION

QUARTER SECTION CORNER $\frac{18}{19}$ | $\frac{17}{20}$ TOWNSHIP 4 N, RANGE 1 W, GRANT COUNTY, WISCONSIN
 GEODETIC SURVEY BY: _____

STATE PLANE COORDINATES OF: _____
 NORTH _____
 EAST _____

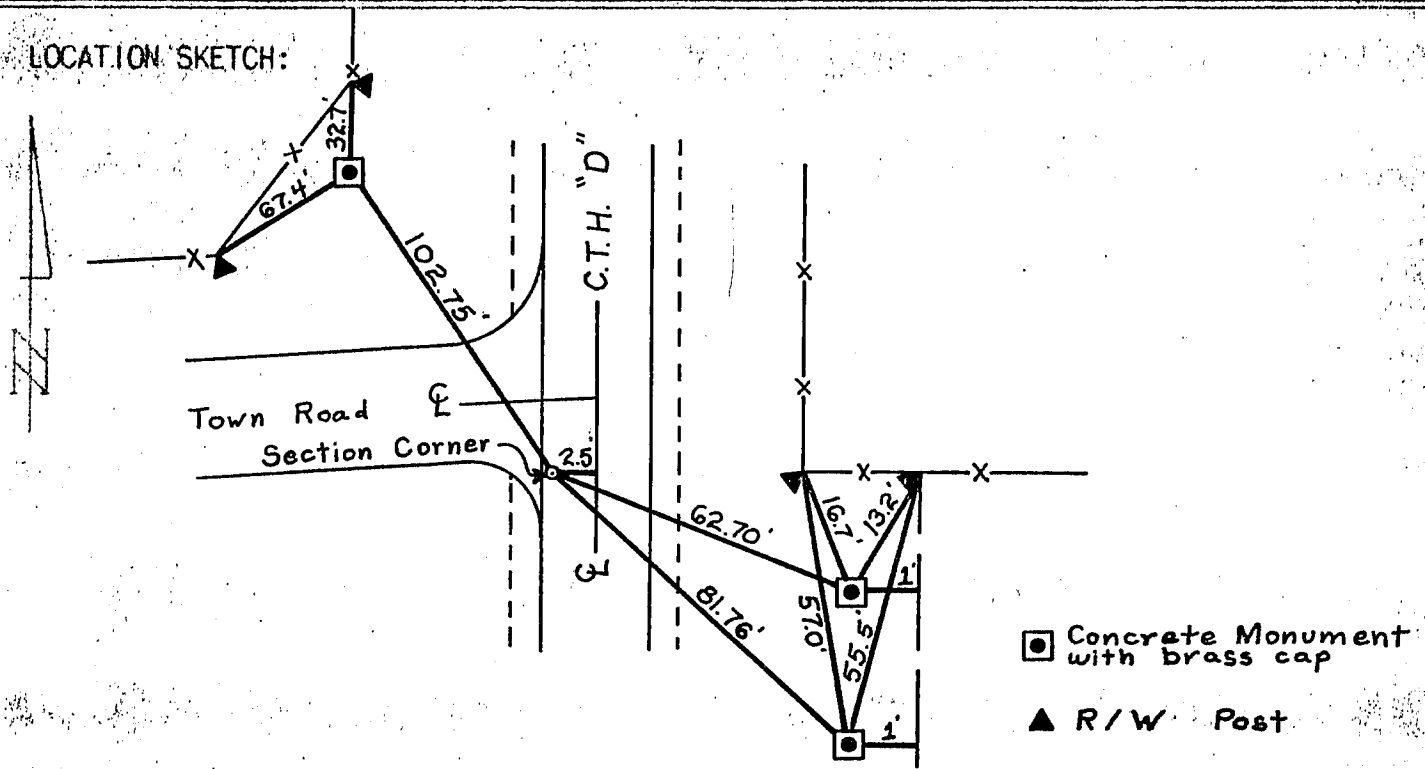
ELEVATION OF STATION: _____ THETA ANGLE: _____

HORIZONTAL DATUM: WISCONSIN STATE PLANE COORDINATE SYSTEM, SOUTH ZONE

VERTICAL DATUM: MEAN SEA LEVEL, 1929 ADJUSTMENT

HORIZONTAL & VERTICAL CONTROL ACCURACY: SECOND ORDER

LOCATION SKETCH:



SURVEYOR'S AFFIDAVIT:

STATE OF WISCONSIN)
 GRANT COUNTY) SS

I HEREBY CERTIFY THAT THE POINT SET FOR COUNTY HIGHWAY PROJECT S 0574(7) AND SHOWN ON PROJECT PLAT WAS REFERENCED PRIOR TO CONSTRUCTION. EXCAVATION WAS DONE BELOW THE ROADWAY SURFACE IN SEARCH OF SOME EXISTING EVIDENCE. NOTHING WAS FOUND.

DATE OF SURVEY: JUNE, 1971

Oscar J. Detrich P.E.
 SURVEY SUPERVISOR
 DISTRICT 1