

GRANT COUNTY
U.S. PUBLIC LAND SURVEY MONUMENT RECORD

INSTRUCTIONS: THIS RECORD SHALL SHOW THE LOCATION OF THE CORNER AND SHALL INCLUDE ALL OF THE FOLLOWING ELEMENTS (A THROUGH I).

(A) IDENTIFY THE CORNER AS REFERENCED TO THE U.S. PUBLIC LAND SURVEY SYSTEM

■ = CORNER MONUMENT RESTORED

WITNESSES TO CORNER LOCATION:

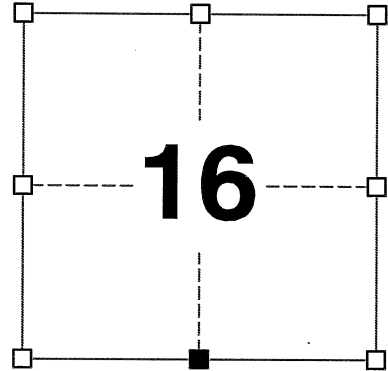
TODD C. PATTON
TYLER D. ATKINSON

GEOGRAPHIC COORDINATES,
NAD 83 (2011) ADJUSTMENT:

LATITUDE: 42° 48' 46.34782"
LONGITUDE: 90° 29' 46.09349"

WISCONSIN COORDINATE REFERENCE SYSTEM (WISCRS),
GRANT COUNTY, NAD 83 (2011) ADJUSTMENT:

NORTHING: 510,995.526
EASTING: 876,539.240



SECTION 16
TOWNSHIP 4 NORTH, RANGE 1 WEST
TOWN OF LIMA

(B) DESCRIBE ANY RECORD EVIDENCE, MONUMENT EVIDENCE, OCCUPATIONAL EVIDENCE, TESTIMONIAL EVIDENCE OR ANY OTHER MATERIAL EVIDENCE YOU CONSIDERED, AND WHETHER THE MONUMENT WAS FOUND OR PLACED.

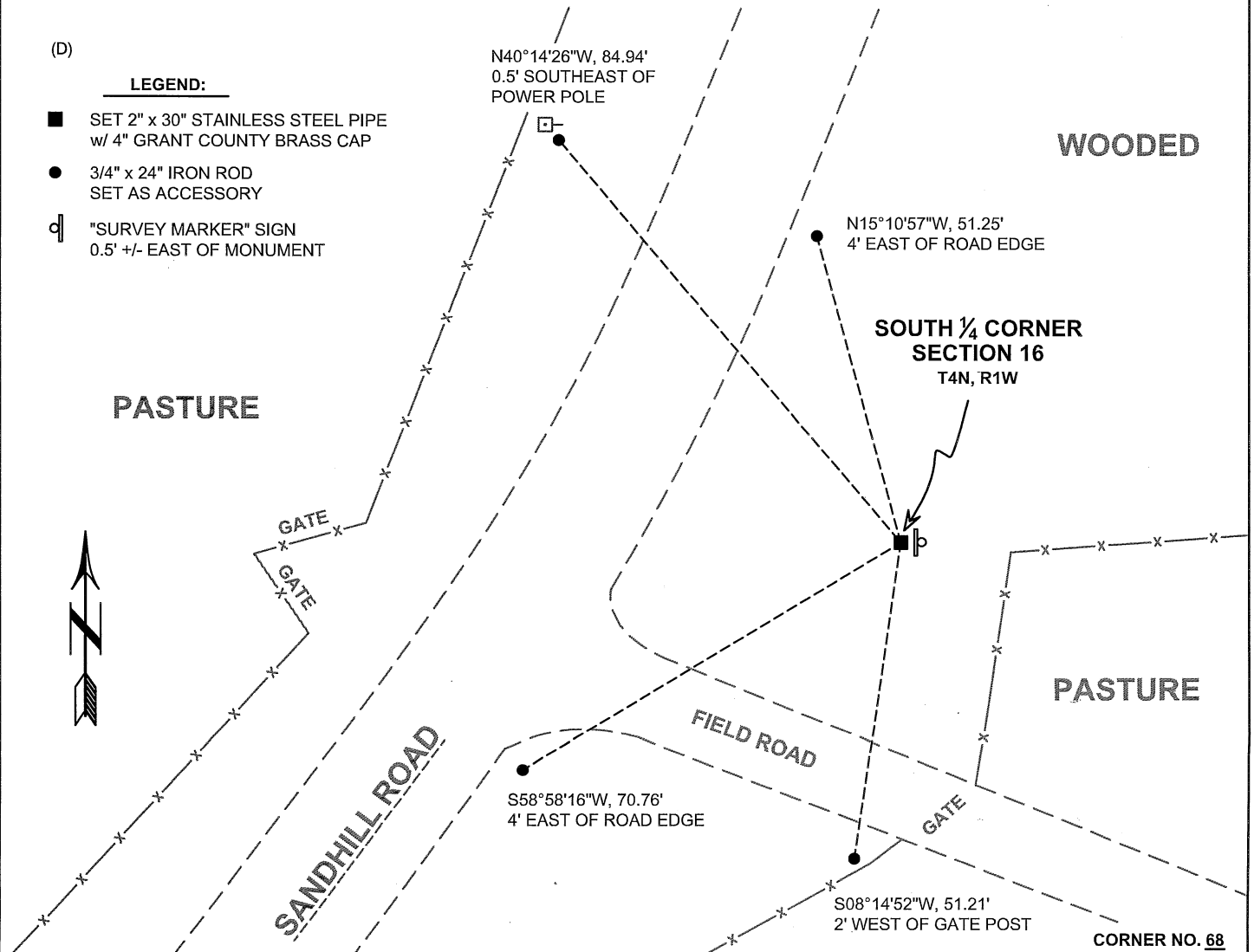
I COULD FIND NO MONUMENTS FROM THE ORIGINAL GOVERNMENT SURVEY OR THE HISTORIC COUNTY SURVEYOR'S SUBSEQUENT RESURVEYS. I RECOVERED THE 1" REBAR WITH A GRANT COUNTY ALUMINUM CAP REPORTED BY LARRY AUSTIN. I ACCEPTED THIS LOCATION AS THE BEST AVAILABLE EVIDENCE OF THE ORIGINAL GOVERNMENT CORNER AND REMONUMENTED IT WITH A 2" x 30" STAINLESS STEEL PIPE WITH A 4" GRANT COUNTY BRASS CAP.

(C) IN THE PLAN VIEW DRAWING BELOW, PROVIDE REFERENCE TIES TO AT LEAST 4 WITNESS MONUMENTS. WITNESS MONUMENTS SHALL BE MADE OF CONCRETE, NATURAL STONE, IRON, BEARING TREES OR ANY OTHER EQUALLY DURABLE MATERIAL. DEPICT THE RELEVANT MONUMENTS AND REFERENCE TIES WITH SUFFICIENT DETAIL TO ENABLE ACCURATE RELOCATION OF THE CORNER IF THE CORNER MONUMENT IS DISTURBED.

(D)

LEGEND:

- SET 2" x 30" STAINLESS STEEL PIPE w/ 4" GRANT COUNTY BRASS CAP
- 3/4" x 24" IRON ROD SET AS ACCESSORY
- ⊓ "SURVEY MARKER" SIGN 0.5' +/- EAST OF MONUMENT



41068

(E) DESCRIBE ANY MATERIAL DISCREPANCY BETWEEN THE LOCATION OF THE CORNER AS RESTORED OR REESTABLISHED AND THE LOCATION OF THAT CORNER AS PREVIOUSLY RESTORED OR REESTABLISHED BY DISTANCE AND DIRECTION. SHOW THE DISCREPANCY ON THE PLAN VIEW DRAWING UNDER (D), ABOVE. SHOW THE DISTANCES BETWEEN THE CORNER AS PREVIOUSLY RESTORED OR REESTABLISHED AND (1) THE CORNER AS RESTORED OR REESTABLISHED, AND (2) TO AT LEAST 2 OF THE WITNESS MONUMENTS SHOWN ON THE DRAWING IN (D) ABOVE.

N/A

(F) WAS THE CORNER RESTORED THROUGH ACCEPTANCE OF (1) AN OBLITERATED EVIDENCE LOCATION, OR (2) A FOUND PERPETUATED LOCATION?

(2) A FOUND PERPETUATED LOCATION.

(G&H) WAS THE CORNER REESTABLISHED THROUGH LOST CORNER PROPORTIONATE METHODS? IF SO, SHOW THE METHOD, INCLUDING THE DIRECTIONS AND DISTANCES TO OTHER PUBLIC LAND SURVEY CORNERS USED AS EVIDENCE OR USED FOR PROPORTIONING IN DETERMINING THE CORNER LOCATION.

N/A

CORNER HISTORY

THE ORIGINAL GOVERNMENT CORNER WAS ESTABLISHED BY ROBERT CLARK JR. IN THE FIRST QUARTER OF 1833.

IN A SURVEY DATED 1 MARCH 1847, GEO STUNTZ VISITED THE CORNER.

IN A SURVEY DATED 20 DECEMBER 1854, C.J. OVERTON VISITED THE CORNER.

IN A PLAT OF SURVEY DATED 15 JUNE 1999 AND SUBSEQUENT TIE SHEET DATED 5 JULY 1999, LARRY AUSTIN REPORTED SETTING A NO. 8 X 30" REBAR WITH A GRANT COUNTY ALUMINUM CAP AT THE CORNER.

IN A PLAT OF SURVEY DATED 16 JULY 1999, LARRY AUSTIN REPORTED FINDING A NO. 8 REBAR WITH A GRANT COUNTY ALUMINUM CAP AT THE CORNER.

IN A PLAT OF SURVEY DATED 29 APRIL 2009, LARRY AUSTIN REPORTED FINDING A NO. 8 REBAR WITH A GRANT COUNTY ALUMINUM CAP AT THE CORNER.

IN A PLAT OF SURVEY DATED 20 FEBRUARY 2014, AARON AUSTIN REPORTED FINDING A NO. 8 REBAR WITH A GRANT COUNTY ALUMINUM CAP AT THE CORNER.

IN A PLAT OF SURVEY DATED 3 NOVEMBER 2015, AARON AUSTIN REPORTED FINDING A 1" REBAR WITH A GRANT COUNTY ALUMINUM CAP AT THE CORNER.

IN A PLAT OF SURVEY DATED 5 APRIL 2016, AARON AUSTIN REPORTED FINDING A 1" REBAR WITH A GRANT COUNTY ALUMINUM CAP AT THE CORNER.

IN A PLAT OF SURVEY DATED 18 JUNE 2019, AARON AUSTIN REPORTED FINDING A 1" REBAR WITH A GRANT COUNTY ALUMINUM CAP AT THE CORNER.

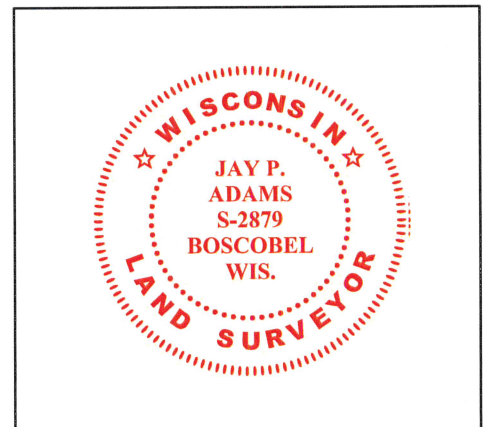
AFFIX LAND SURVEYOR SEAL

(I) I, JAY P. ADAMS, P.L.S. - 2879, CERTIFY THAT THE CORNER LOCATION SHOWN ON THIS RECORD WAS DETERMINED BY ME OR UNDER MY DIRECTION AND CONTROL AND THAT THIS U.S. PUBLIC LAND SURVEY MONUMENT RECORD IS CORRECT AND COMPLETE TO THE BEST OF MY KNOWLEDGE AND BELIEF.

28 OCTOBER 2022

SIGNATURE

DATE



GRANT COUNTY CERTIFIED LAND CORNER

CERTIFICATE:

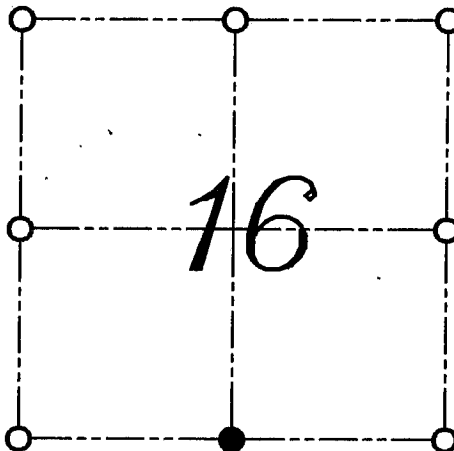
I, LARRY L. AUSTIN, DO HEREBY CERTIFY THAT ON SIXTH DAY OF MAY, 1999, I FOUND NO EVIDENCE OF THE SOUTH 1/4 CORNER OF SECTION 16, TOWN 4 NORTH, RANGE 1 WEST, OF THE FOURTH PRINCIPAL MERIDIAN, AND I RE-ESTABLISHED SAID CORNER ACCORDING TO THE WISCONSIN STATUTES AS SHOWN AND DESCRIBED HEREON.

DATED THIS FIFTH DAY OF JULY, 1999

Larry L. Austin
LARRY L. AUSTIN S-1903



CORNER NUMBER 68



● = CORNER LOCATION
SOUTH 1/4 CORNER OF
SECTION 16, T 4 N R 1 W
TOWN OF LIMA

HISTORY OF ORIGINAL CORNER ESTABLISHMENT:

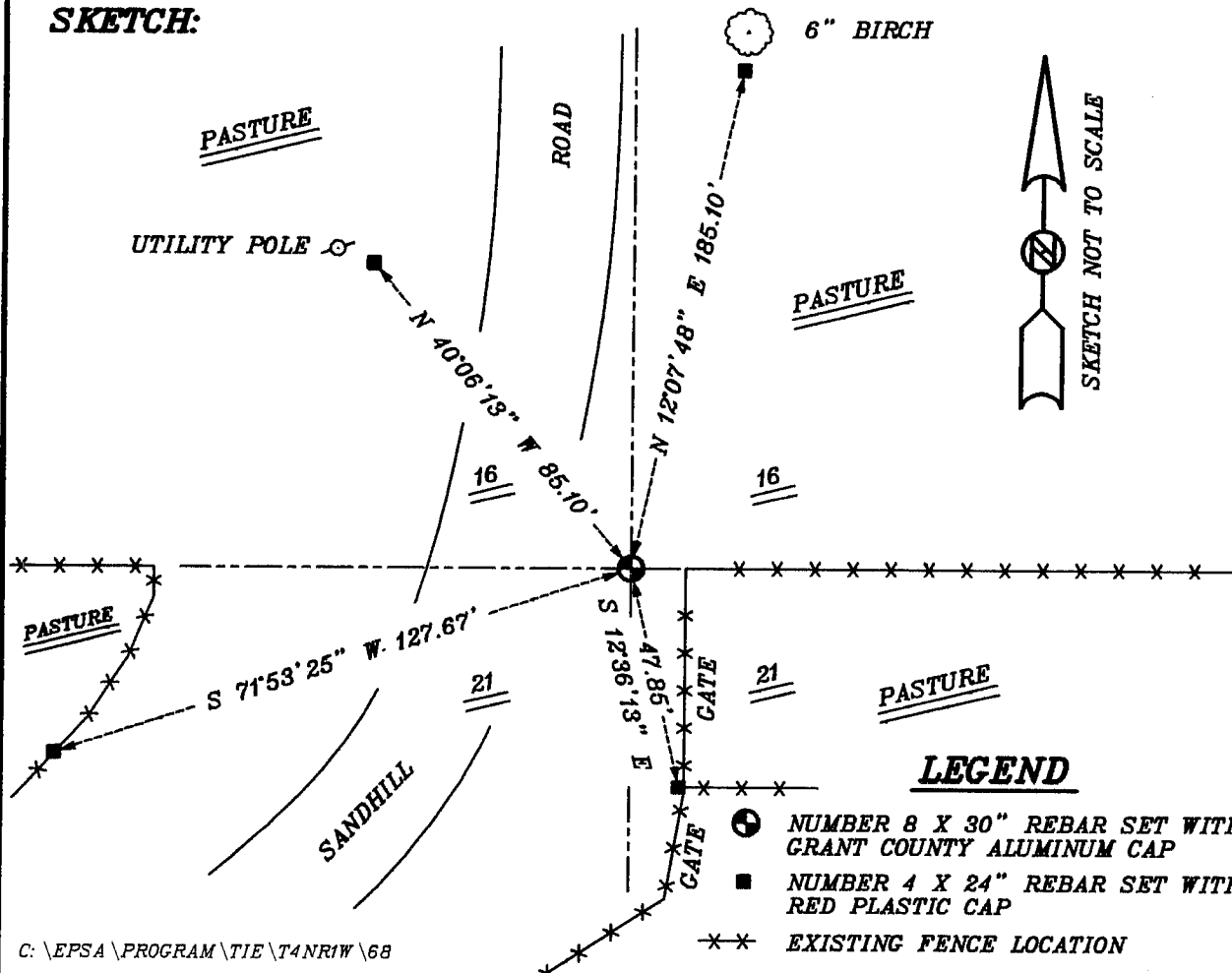
CORNER WAS SET IN 1833 BY ROBERT CLARK. NO OTHER SURVEY RECORDS OF THE CORNER WERE FOUND.

DESCRIPTION OF CORNER EVIDENCE FOUND:

I SET THE CORNER AT A SINGLE PROPORTION ALONG THE SOUTH LINE OF SECTION 16. VERIFIED THIS LOCATION USING E.D.M. AND G.P.S. METHODS.

DESCRIPTION OF CORNER AND WITNESS MONUMENTS, REFERENCES AND ACCESSORIES USED TO PERPETUATE THE ORIGINAL OR RE-ESTABLISHED LOCATION OF THIS CORNER:
WITNESS TO THE CORNER LOCATION: BOBBY SEDGWICK ; SHELBY BLINDERT

SKETCH:



C:\EPSA\PROGRAM\TIE\T4NR1W\68

AUG 10 1999