

REMON  
41059

# GRANT COUNTY U.S. PUBLIC LAND SURVEY MONUMENT RECORD

INSTRUCTIONS: THIS RECORD SHALL SHOW THE LOCATION OF THE CORNER AND SHALL INCLUDE ALL OF THE FOLLOWING ELEMENTS (A THROUGH I).

(A) IDENTIFY THE CORNER AS REFERENCED TO THE U.S. PUBLIC LAND SURVEY SYSTEM

■ = CORNER MONUMENT RESTORED

WITNESSES TO CORNER LOCATION:

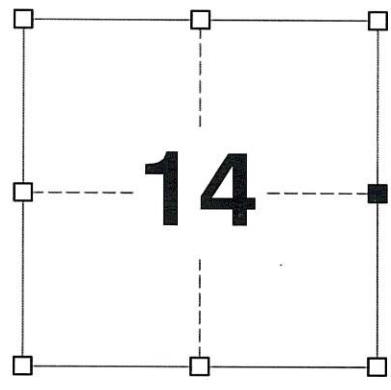
**TODD C. PATTON**  
**TYLER D. ATKINSON**

GEOGRAPHIC COORDINATES,  
NAD 83 (2011) ADJUSTMENT:

**LATITUDE:** 42° 49' 13.41238"  
**LONGITUDE:** 90° 26' 48.08554"

WISCONSIN COORDINATE REFERENCE SYSTEM (WISCRS),  
GRANT COUNTY, NAD 83 (2011) ADJUSTMENT:

**NORTHING:** 513,787.364  
**EASTING:** 889,796.391



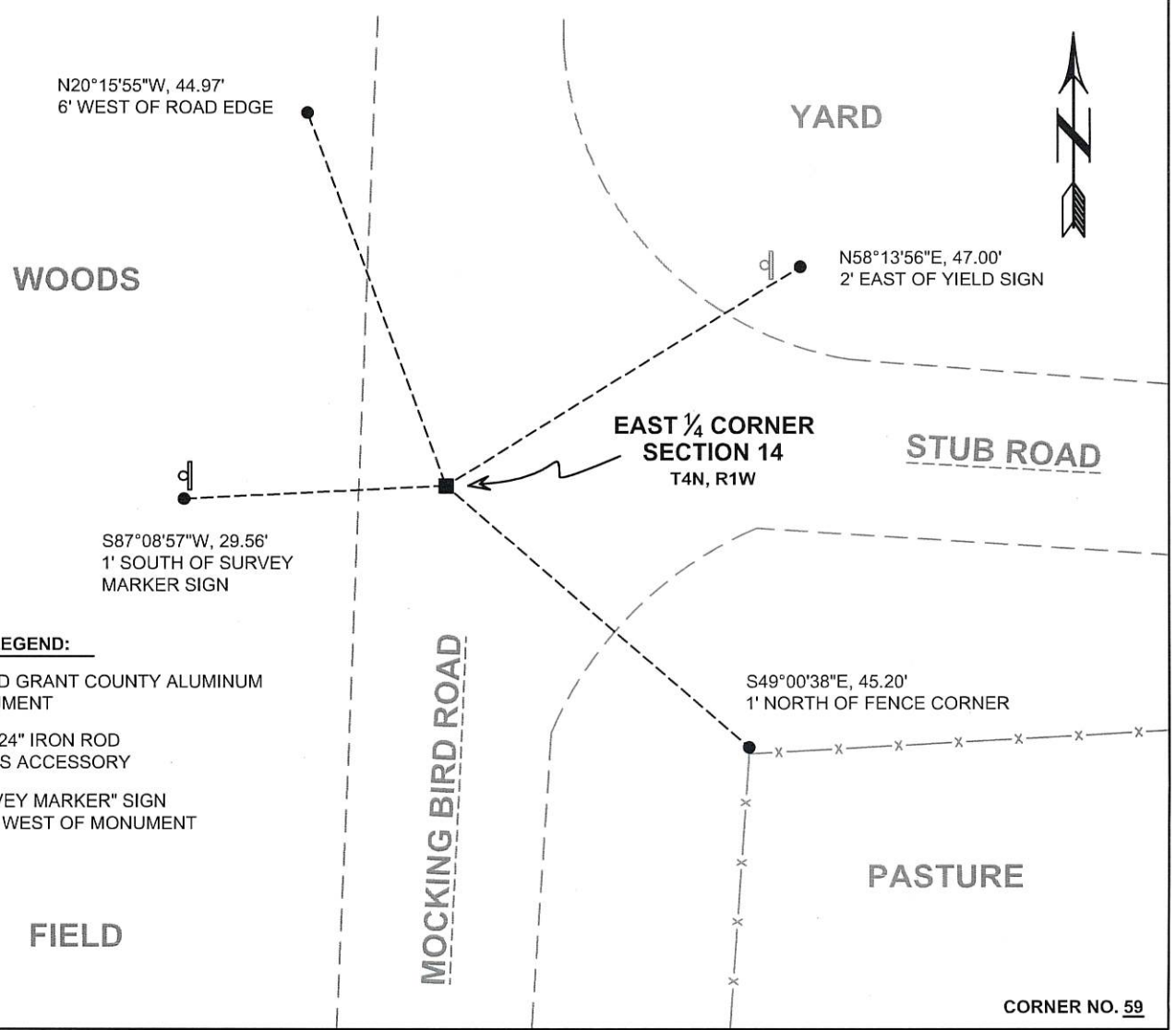
**SECTION 14**  
**TOWNSHIP 4 NORTH, RANGE 1 WEST**  
**TOWN OF LIMA**

(B) DESCRIBE ANY RECORD EVIDENCE, MONUMENT EVIDENCE, OCCUPATIONAL EVIDENCE, TESTIMONIAL EVIDENCE OR ANY OTHER MATERIAL EVIDENCE YOU CONSIDERED, AND WHETHER THE MONUMENT WAS FOUND OR PLACED.

**I COULD FIND NO MONUMENTS FROM THE ORIGINAL GOVERNMENT SURVEY. I RECOVERED THE GRANT COUNTY ALUMINUM MONUMENT REPORTED BY LARRY AUSTIN. I ACCEPTED THIS LOCATION AS THE BEST AVAILABLE EVIDENCE OF THE ORIGINAL GOVERNMENT CORNER AND LEFT IT IN PLACE.**

(C) IN THE PLAN VIEW DRAWING BELOW, PROVIDE REFERENCE TIES TO AT LEAST 4 WITNESS MONUMENTS. WITNESS MONUMENTS SHALL BE MADE OF CONCRETE, NATURAL STONE, IRON, BEARING TREES OR ANY OTHER EQUALLY DURABLE MATERIAL. DEPICT THE RELEVANT MONUMENTS AND REFERENCE TIES WITH SUFFICIENT DETAIL TO ENABLE ACCURATE RELOCATION OF THE CORNER IF THE CORNER MONUMENT IS DISTURBED.

(D)



**LEGEND:**

- FOUND GRANT COUNTY ALUMINUM MONUMENT
- 3/4" x 24" IRON ROD SET AS ACCESSORY
- ⊞ "SURVEY MARKER" SIGN 30' +/- WEST OF MONUMENT

(E) DESCRIBE ANY MATERIAL DISCREPANCY BETWEEN THE LOCATION OF THE CORNER AS RESTORED OR REESTABLISHED AND THE LOCATION OF THAT CORNER AS PREVIOUSLY RESTORED OR REESTABLISHED BY DISTANCE AND DIRECTION. SHOW THE DISCREPANCY ON THE PLAN VIEW DRAWING UNDER (D), ABOVE. SHOW THE DISTANCES BETWEEN THE CORNER AS PREVIOUSLY RESTORED OR REESTABLISHED AND (1) THE CORNER AS RESTORED OR REESTABLISHED, AND (2) TO AT LEAST 2 OF THE WITNESS MONUMENTS SHOWN ON THE DRAWING IN (D) ABOVE.

N/A

(F) WAS THE CORNER RESTORED THROUGH ACCEPTANCE OF (1) AN OBLITERATED EVIDENCE LOCATION, OR (2) A FOUND PERPETUATED LOCATION?

(2) A FOUND PERPETUATED LOCATION.

(G&H) WAS THE CORNER REESTABLISHED THROUGH LOST CORNER PROPORTIONATE METHODS? IF SO, SHOW THE METHOD, INCLUDING THE DIRECTIONS AND DISTANCES TO OTHER PUBLIC LAND SURVEY CORNERS USED AS EVIDENCE OR USED FOR PROPORTIONING IN DETERMINING THE CORNER LOCATION.

N/A

CORNER HISTORY

THE ORIGINAL GOVERNMENT CORNER WAS ESTABLISHED BY ROBERT CLARK JR. IN THE FIRST QUARTER OF 1833.

IN A PLAT OF SURVEY DATED 3 DECEMBER 1986, BRUCE BOWDEN REPORTED FINDING A GRANT COUNTY ALUMINUM MONUMENT AT THE CORNER.

IN A TIE SHEET DATED 15 SEPTEMBER 1995, LARRY AUSTIN REPORTED SETTING A GRANT COUNTY ALUMINUM MONUMENT AT THE CORNER.

SINCE 15 SEPTEMBER 1995, THIS CORNER HAS BEEN USED IN NUMEROUS SURVEYS NOTING A GRANT COUNTY ALUMINUM MONUMENT AT THE CORNER.

AFFIX LAND SURVEYOR SEAL

(I) I, JAY P. ADAMS, P.L.S. - 2879, CERTIFY THAT THE CORNER LOCATION SHOWN ON THIS RECORD WAS DETERMINED BY ME OR UNDER MY DIRECTION AND CONTROL AND THAT THIS U.S. PUBLIC LAND SURVEY MONUMENT RECORD IS CORRECT AND COMPLETE TO THE BEST OF MY KNOWLEDGE AND BELIEF.



SIGNATURE

24 SEPTEMBER 2022

DATE

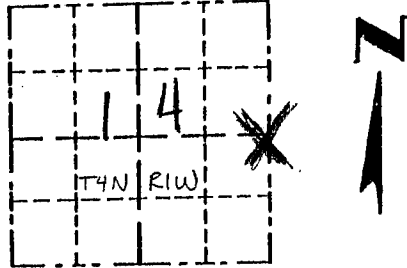


# GRANT COUNTY

## Survey Monument Record

TYPE OF MONUMENT GRANT COUNTY Alum. Mon.  
 STATE PLANE COORDINATES: N \_\_\_\_\_  
 E \_\_\_\_\_  
 ELEVATION — M.S.L. DATUM: \_\_\_\_\_  
 THETA ANGLE: \_\_\_\_\_  
 FIELD BOOK: \_\_\_\_\_  
 PAGE \_\_\_\_\_

CORNER NO. 59  
 SECTION 14  
 TOWN 4N  
 RANGE 1W  
E 1/4 Cor



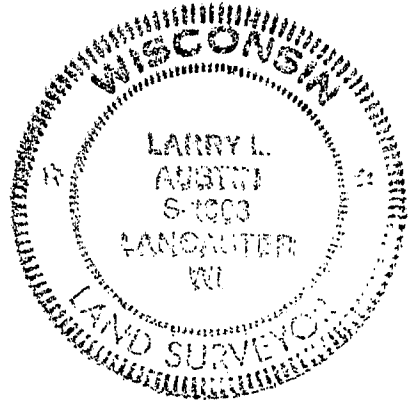
LOCATION  
(Indicated by "X")

### BASIS FOR MONUMENT LOCATION

(Use reverse side if necessary)

Show info such as: History of corner, with reference to Vol. and pg., dates, surveyor; exact description of monument replaced; if location computed, by taped or EDM traverse; landowner, remarks, etc.

SEAL:



CORNER WAS ORIGINALLY SET  
BY ROBERT CLARK IN 1833;  
NO RECORD FOUND OF CORNER  
SINCE ORIGINAL SURVEYS; I SET  
THE MONUMENT AT OCCUPIED  
LOCATION AFTER EDM TRAVERSE  
OF THE AREA

CERTIFIED CORRECT

Larry L. Austin  
 Registered Land Surveyor

DATE: 9/15/95

### TIE SKETCH

Show at least three (3) ties and monument.

