

U.S. PUBLIC LAND SURVEY MONUMENT RECORD - GRANT COUNTY, WI

Section 14, Town 4 North Range 1 West, Town of Lima (a)

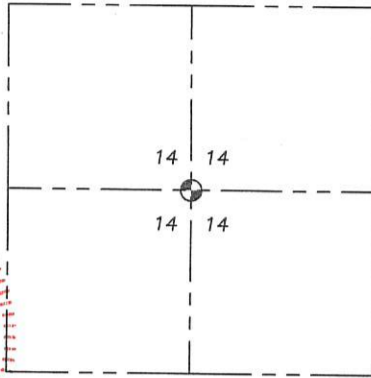
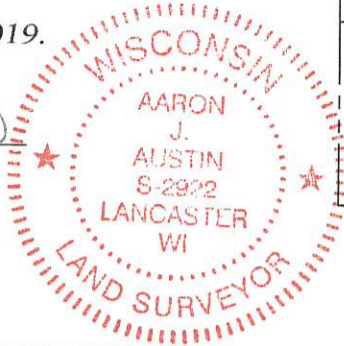
NOTE: This form is intended and designed to fulfill all requirements of the Wisconsin Administrative Code Chapter A-E 7.08, U.S. Public Land Survey Monument Record (3) (a) (b) (c) (d) (e) (f) (g) (h) (i).

CERTIFICATE: (i)

I, Aaron J. Austin, Wisconsin Professional Land Surveyor, do hereby certify that the corner location on this record was determined by me and/or under my direct supervision and that this U.S. Public Land Survey Monument Record is correct and complete to the best of my knowledge and belief.

Dated this 18th day of February, 2019.

*Aaron J. Austin*  
Aaron J. Austin, S-2922



⊙ = CORNER LOCATION

Grant County Coordinates:  
NAD 83 (2011)  
Northing: 513,752.92  
Easting: 887,102.68

HISTORY OF CORNER ESTABLISHMENT:

Corner was not set with Original Government Survey.  
Larry Austin set a 3/4" rebar at the corner on a Survey dated 7-29-1997 which is filed in Book Z, Page 58.

DESCRIPTION OF CORNER EVIDENCE FOUND: (b) (f) (g) (h)

I found the 3/4" rebar as set by L. Austin. I set four witness monuments after I verified the monument's location with G.P.S. and E.D.M. methods.

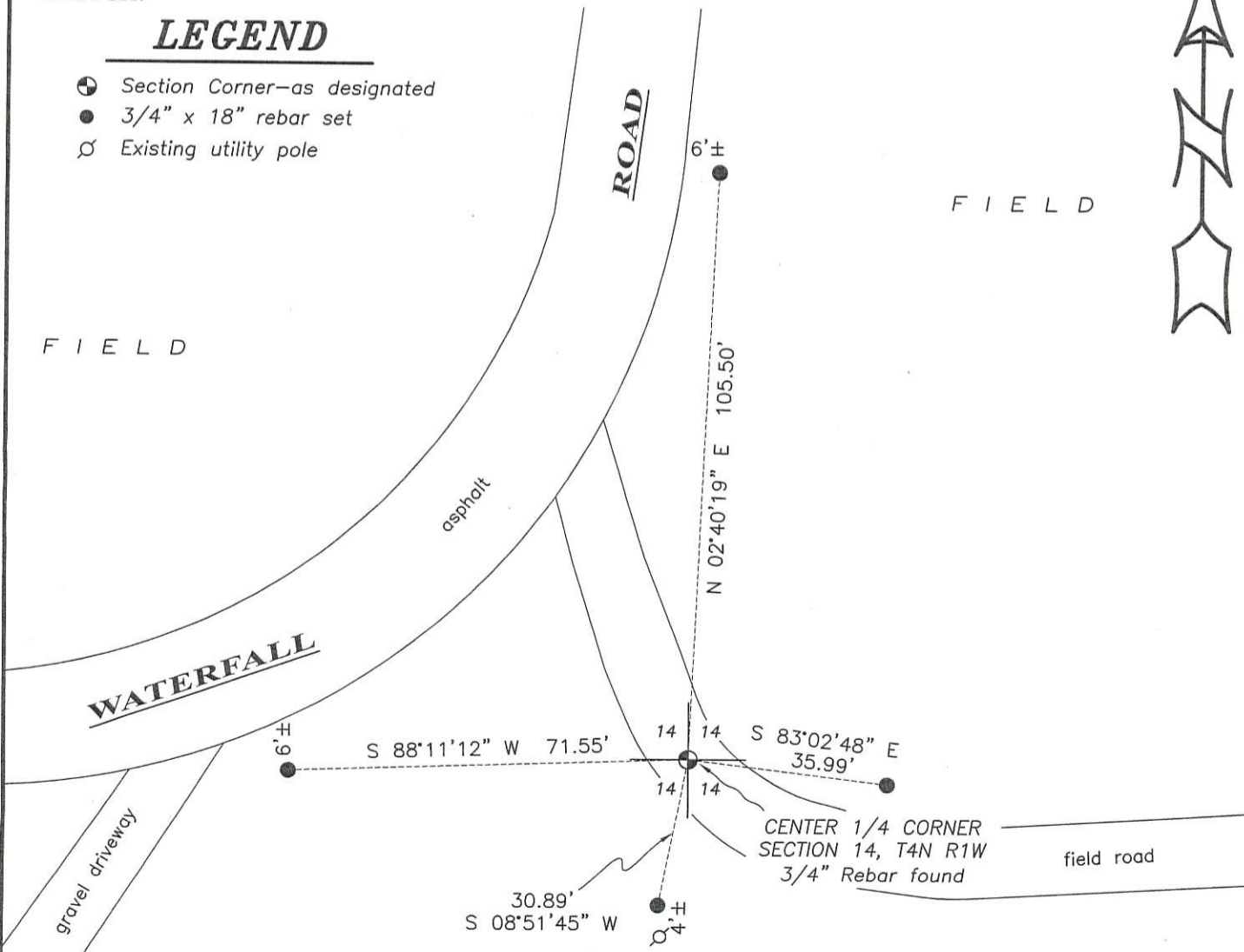
DESCRIPTION OF CORNER AND WITNESS MONUMENTS, references and accessories used to perpetuate the original or re-established location of this corner. (c) (d) (e)

Witnesses to corner location Shane Austin, Owen Austin. Drawn by Owen Austin

SKETCH:

LEGEND

- ⊙ Section Corner—as designated
- 3/4" x 18" rebar set
- ⊙ Existing utility pole



0 30 60

SCALE 1" = 30'