

Remon
41051

GRANT COUNTY U.S. PUBLIC LAND SURVEY MONUMENT RECORD

INSTRUCTIONS: THIS RECORD SHALL SHOW THE LOCATION OF THE CORNER AND SHALL INCLUDE ALL OF THE FOLLOWING ELEMENTS (A THROUGH I).

- (A) IDENTIFY THE CORNER AS REFERENCED TO THE U.S. PUBLIC LAND SURVEY SYSTEM

■ = CORNER MONUMENT RESTORED

WITNESSES TO CORNER LOCATION:

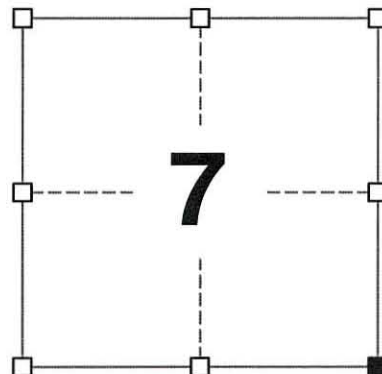
JAY P. ADAMS
BRADLEY A. SCHROEDER
TODD C. PATTON

GEOGRAPHIC COORDINATES,
NAD 83 (2011) ADJUSTMENT:

LATITUDE: 42° 49' 38.81030"
LONGITUDE: 90° 31' 33.50194"

WISCONSIN COORDINATE REFERENCE SYSTEM (WISCRS),
GRANT COUNTY, NAD 83 (2011) ADJUSTMENT:

NORTHING: 516,279.597
EASTING: 868,515.796



SECTION 7
TOWNSHIP 4 NORTH, RANGE 1 WEST
TOWN OF LIMA

- (B) DESCRIBE ANY RECORD EVIDENCE, MONUMENT EVIDENCE, OCCUPATIONAL EVIDENCE, TESTIMONIAL EVIDENCE OR ANY OTHER MATERIAL EVIDENCE YOU CONSIDERED, AND WHETHER THE MONUMENT WAS FOUND OR PLACED.

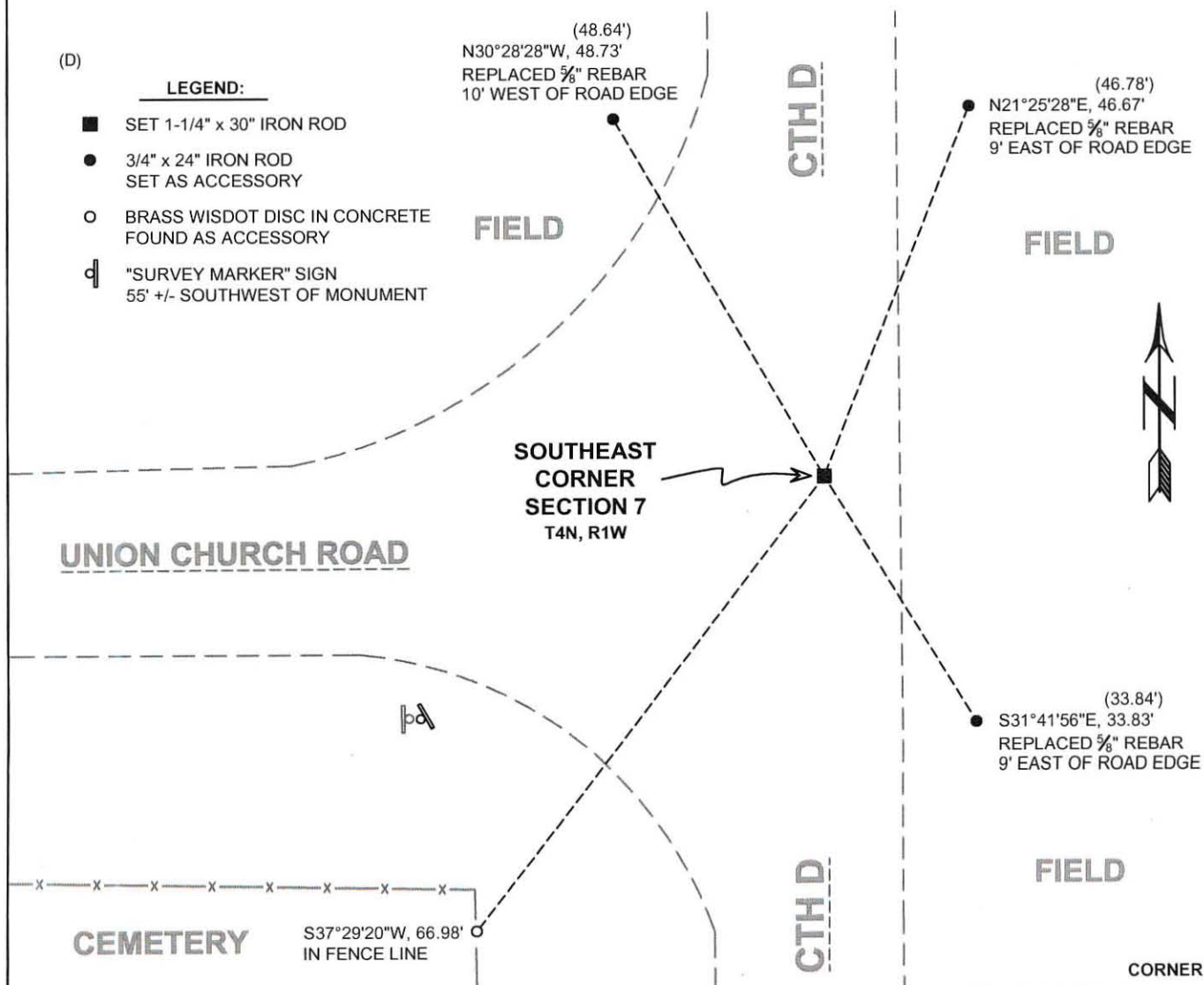
I COULD FIND NO MONUMENTS FROM THE ORIGINAL GOVERNMENT SURVEY OR THE HISTORIC COUNTY SURVEYOR'S SUBSEQUENT RESURVEY. I RECOVERED THE RAIL ROAD SPIKE REPORTED BY ROSE. I ACCEPTED THIS LOCATION AS THE BEST AVAILABLE EVIDENCE OF THE ORIGINAL GOVERNMENT CORNER AND REMONUMENTED IT WITH A 1-1/4" x 30" IRON ROD.

- (C) IN THE PLAN VIEW DRAWING BELOW, PROVIDE REFERENCE TIES TO AT LEAST 4 WITNESS MONUMENTS. WITNESS MONUMENTS SHALL BE MADE OF CONCRETE, NATURAL STONE, IRON, BEARING TREES OR ANY OTHER EQUALLY DURABLE MATERIAL. DEPICT THE RELEVANT MONUMENTS AND REFERENCE TIES WITH SUFFICIENT DETAIL TO ENABLE ACCURATE RELOCATION OF THE CORNER IF THE CORNER MONUMENT IS DISTURBED.

- (D)

LEGEND:

- SET 1-1/4" x 30" IRON ROD
- 3/4" x 24" IRON ROD SET AS ACCESSORY
- BRASS WISDOT DISC IN CONCRETE FOUND AS ACCESSORY
- ⊓ "SURVEY MARKER" SIGN 55' +/- SOUTHWEST OF MONUMENT



41051

(E) DESCRIBE ANY MATERIAL DISCREPANCY BETWEEN THE LOCATION OF THE CORNER AS RESTORED OR REESTABLISHED AND THE LOCATION OF THAT CORNER AS PREVIOUSLY RESTORED OR REESTABLISHED BY DISTANCE AND DIRECTION. SHOW THE DISCREPANCY ON THE PLAN VIEW DRAWING UNDER (D), ABOVE. SHOW THE DISTANCES BETWEEN THE CORNER AS PREVIOUSLY RESTORED OR REESTABLISHED AND (1) THE CORNER AS RESTORED OR REESTABLISHED, AND (2) TO AT LEAST 2 OF THE WITNESS MONUMENTS SHOWN ON THE DRAWING IN (D) ABOVE.

N/A

(F) WAS THE CORNER RESTORED THROUGH ACCEPTANCE OF (1) AN OBLITERATED EVIDENCE LOCATION, OR (2) A FOUND PERPETUATED LOCATION?

(2) A FOUND PERPETUATED LOCATION.

(G&H) WAS THE CORNER REESTABLISHED THROUGH LOST CORNER PROPORTIONATE METHODS? IF SO, SHOW THE METHOD, INCLUDING THE DIRECTIONS AND DISTANCES TO OTHER PUBLIC LAND SURVEY CORNERS USED AS EVIDENCE OR USED FOR PROPORTIONING IN DETERMINING THE CORNER LOCATION.

N/A

CORNER HISTORY

THE ORIGINAL GOVERNMENT CORNER WAS ESTABLISHED BY ROBERT CLARK JR. IN THE FIRST QUARTER OF 1833.

IN A SURVEY WITH AN UNKNOWN DATE AND SURVEYOR, AN ORIGINAL BEARING TREE WAS FOUND AND TWO NEW BEARING TREES WERE ESTABLISHED.

IN A TIE SHEET DATED JUNE 1971, OSCAR DITTRICH REPORTED SETTING THE CORNER.

IN A PLAT OF SURVEY AND SUBSEQUENT TIE SHEET DATED AUGUST 1990, BRUCE BOWDEN REPORTED SETTING A 30" DRIVABLE CAST ALUMINUM MONUMENT AT THE CORNER.

IN A PLAT OF SURVEY DATED 28 OCTOBER 2005, LARRY AUSTIN REPORTED FINDING A GRANT COUNTY ALUMINUM MONUMENT AT THE CORNER.

IN A PLAT OF SURVEY DATED 14 JUNE 2010, LARRY AUSTIN REPORTED FINDING A 1" IRON PIPE AT THE CORNER.

IN A PLAT OF SURVEY AND SUBSEQUENT TIE SHEET DATED NOVEMBER 2012, JIMMY ROSE REPORTED SETTING A RAIL ROAD SPIKE AT THE CORNER.

AFFIX LAND SURVEYOR SEAL

(I) I, JAY P. ADAMS, P.L.S. - 2879, CERTIFY THAT THE CORNER LOCATION SHOWN ON THIS RECORD WAS DETERMINED BY ME OR UNDER MY DIRECTION AND CONTROL AND THAT THIS U.S. PUBLIC LAND SURVEY MONUMENT RECORD IS CORRECT AND COMPLETE TO THE BEST OF MY KNOWLEDGE AND BELIEF.

13 MARCH 2020

SIGNATURE

DATE



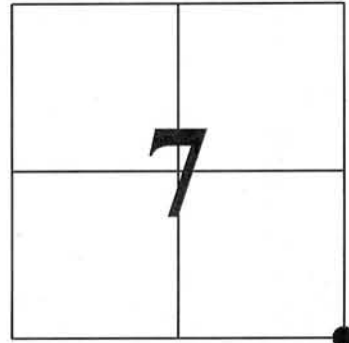
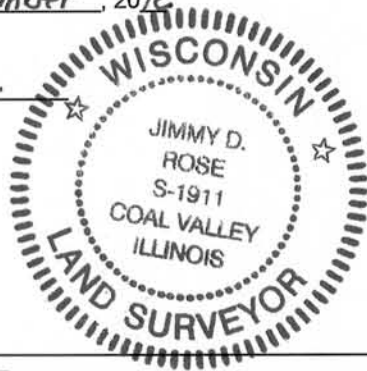
U.S. PUBLIC LAND SURVEY MONUMENT RECORD - GRANT COUNTY, WI
 Section 7, Town 4 North Range 1 West, Town of Lima

CERTIFICATE:

I, Jimmy D. Rose, do hereby certify that the corner location on this record was determined by me and/or under my direct supervision and that this U.S. Public Land Survey Monument Record is correct and complete to the best of my knowledge and belief.

Dated this 21ST day of November, 2012

Jimmy D. Rose
 Jimmy D. Rose S-1911



● = CORNER LOCATION

HISTORY OF CORNER ESTABLISHMENT: CORNER PREVIOUSLY ESTABLISHED BY BRUCE BOWDEN IN 1990.

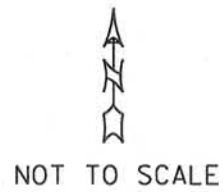
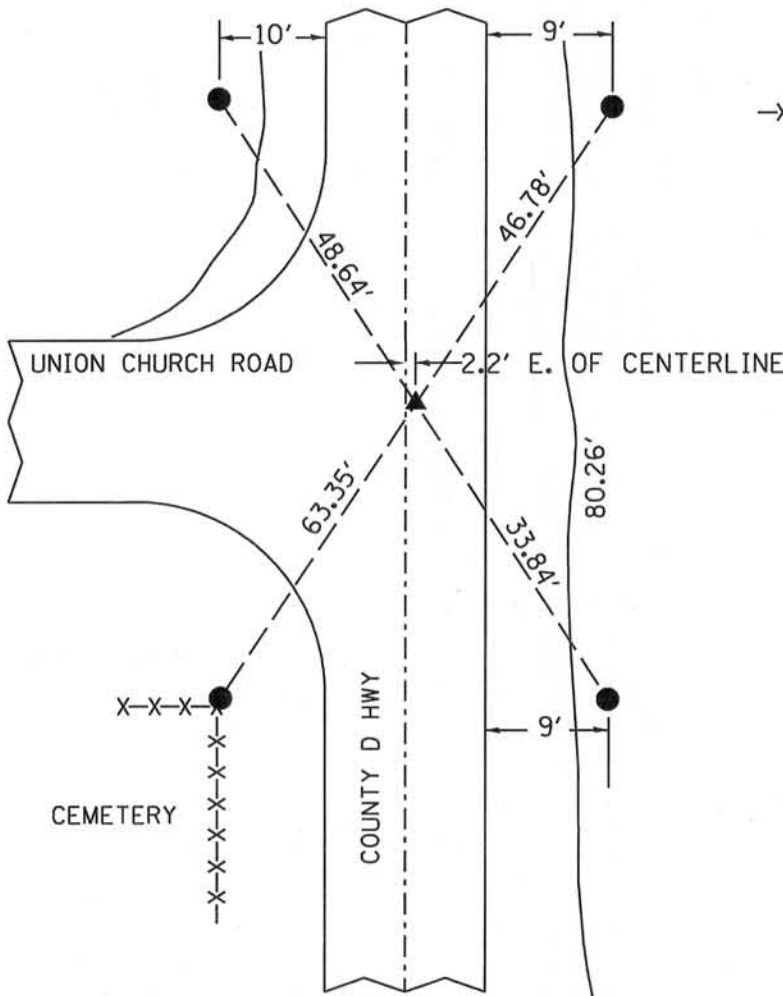
DESCRIPTION OF CORNER EVIDENCE FOUND: FOUND TWO ACCESSORY TIES. RE-ESTABLISHED CONER MONUMENT USING ACCESSORY TIES AND TRAVERSE AROUND SECTION TO FIT BOWDEN LOCATION.

DESCRIPTION OF CORNER AND WITNESS MONUMENTS, references and accessories used to perpetuate the original or re-established location of this corner.

SKETCH:

LEGEND

- ▲ SET RAILROAD SPIKE
- SET 5/8" DIA. REBAR
- X-X- CHAIN LINK FENCE
- POWER POLE
- ⊠ ROW MARKER



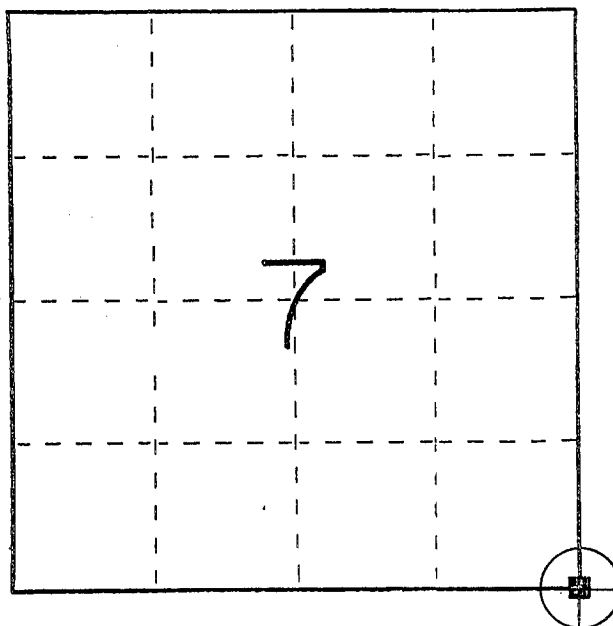
U. S. PUBLIC LAND SURVEY MONUMENT RECORD

INSTRUCTIONS: This record shall show the location of the corner and shall include all of the following nine elements (a through i).

(a) Identify the corner by reference to the U.S. public land survey system.

○ = Corner monument restored.

SOUTHEAST CORNER
SECTION 7
TOWN 4 NORTH
RANGE 1 WEST
LIMA TOWNSHIP
GRANT COUNTY, WISCONSIN

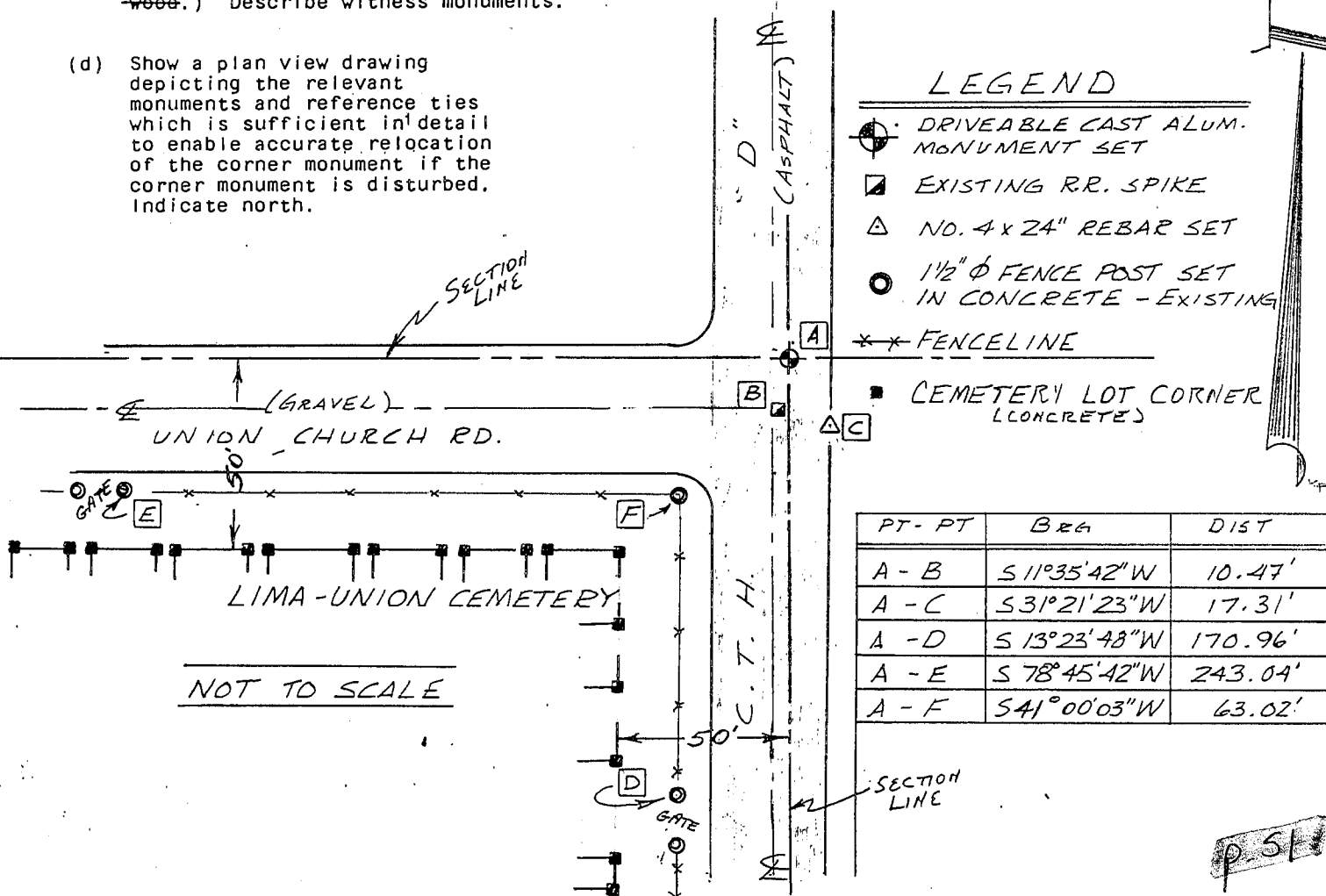


(b) Describe any record evidence, monument evidence, occupational evidence, testimonial evidence or any other material evidence you considered, and whether the monument was found or placed.

Monument set from ties to the recorded plat of the LIMA UNION CEMETERY.

(c) In the plan view drawing below, provide reference ties to at least 4 witness monuments, or, if the location is within a municipality, to at least 2 witness monuments. (Witness monuments shall be made of concrete, natural stone, iron or other equally durable material, ~~except~~ ~~wood~~.) Describe witness monuments.

(d) Show a plan view drawing depicting the relevant monuments and reference ties which is sufficient in detail to enable accurate relocation of the corner monument if the corner monument is disturbed. Indicate north.



LEGEND

- DRIVEABLE CAST ALUM. MONUMENT SET
- ▣ EXISTING RR. SPIKE
- △ NO. 4 x 24" REBAR SET
- 1 1/2" Ø FENCE POST SET IN CONCRETE - EXISTING
- *** FENCELINE
- CEMETERY LOT CORNER (CONCRETE)

PT - PT	Brg	DIST
A - B	S 11° 35' 42" W	10.47'
A - C	S 31° 21' 23" W	17.31'
A - D	S 13° 23' 48" W	170.96'
A - E	S 78° 45' 42" W	243.04'
A - F	S 41° 00' 03" W	63.02'

NOT TO SCALE

P. 51

- (e) Describe any material discrepancy between the location of the corner as restored or reestablished and the location of that corner as previously restored or reestablished by distance and direction. Show the discrepancy on the plan view drawing under (d), above. Show the distances between the corner as previously restored or reestablished and (1) the corner as restored or reestablished, and (2) to at least 2 of the witness monuments shown on the drawing in (d), above.

Monument set N 11°35'42" E, 10.47' from existing railroad spike.
Origin of unrecorded rail road spike is unknown.

- (f) Was the corner restored through acceptance of (1) an obliterated evidence location, or, (2) a found perpetuated location?

(2) A found perpetuated location

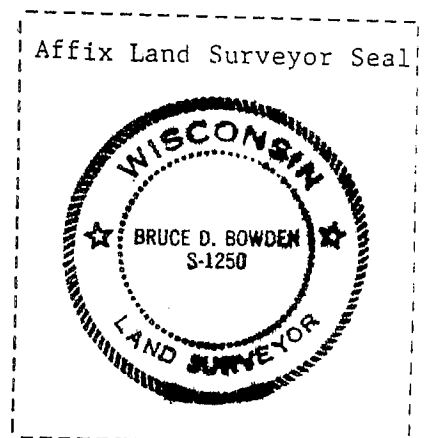
- (g&h) Was the corner reestablished through lost corner proportionate methods? If so, show the method, including the directions and distances to other public land survey corners used as evidence or used for proportioning in determining the corner location?

No.

- (i) I, Bruce D. Bowden, R.L.S. - 1250
(type or print name) certify that the corner location shown on this record was determined by me or under my direction and control and that this U.S. Public Land Survey Monument Record is correct and complete to the best of my knowledge and belief.

Bruce D. Bowden
Signature

August 15, 1990
Date



RECORD OF U.S. PUBLIC LAND SURVEY CONTROL STATION

QUARTER SECTION CORNER $7 \frac{18}{18 \ 17}$ TOWNSHIP 4 N, RANGE 1 W, GRANT COUNTY, WISCONSIN
 GEODETIC SURVEY BY: _____

STATE PLANE COORDINATES OF: _____
 NORTH _____
 EAST _____

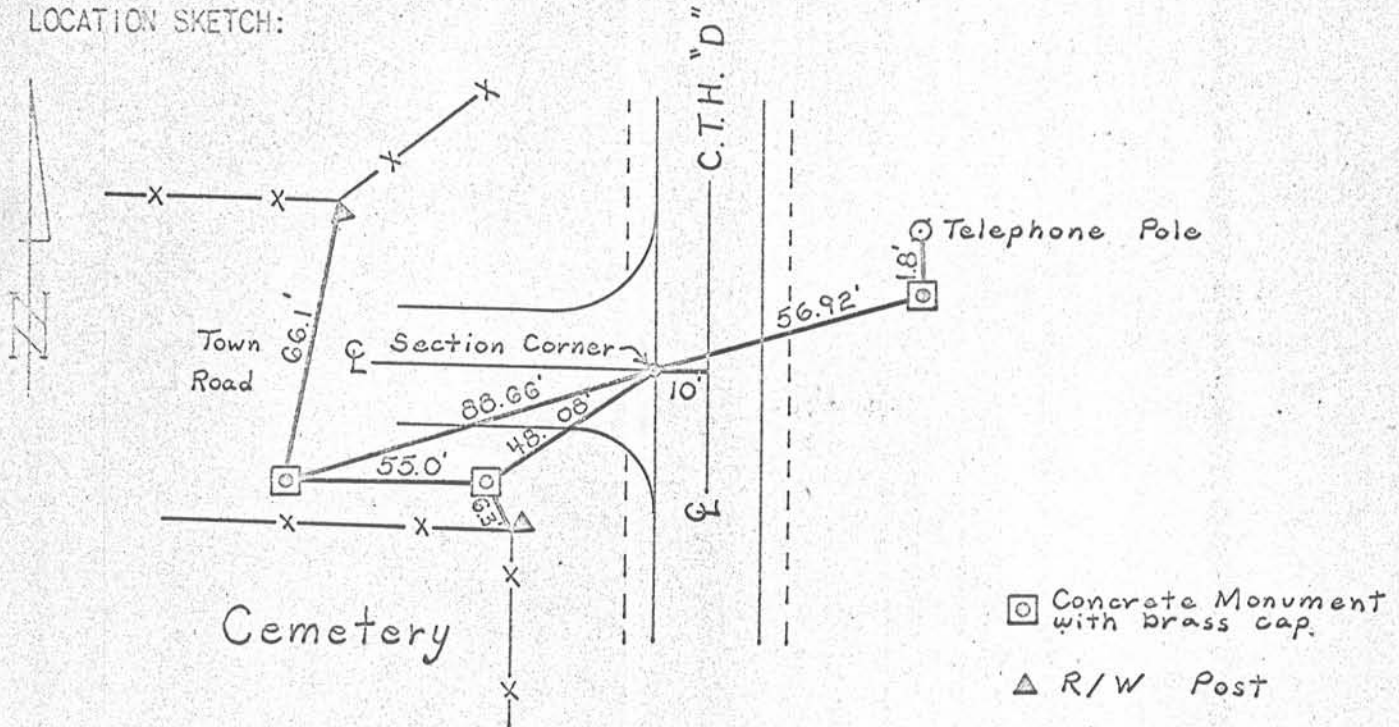
ELEVATION OF STATION: _____ THETA ANGLE: _____

HORIZONTAL DATUM: WISCONSIN STATE PLANE COORDINATE SYSTEM, SOUTH ZONE

VERTICAL DATUM: MEAN SEA LEVEL, 1929 ADJUSTMENT

HORIZONTAL & VERTICAL CONTROL ACCURACY: SECOND ORDER

LOCATION SKETCH:



SURVEYOR'S AFFIDAVIT:

STATE OF WISCONSIN) SS
GRANT COUNTY)

I HEREBY CERTIFY THAT THE POINT SET FOR COUNTY HIGHWAY PROJECT S 0574(7) AND SHOWN ON PROJECT PLAT WAS REFERENCED PRIOR TO CONSTRUCTION. EXCAVATION WAS DONE BELOW THE ROADWAY SURFACE IN SEARCH OF SOME EXISTING EVIDENCE. NOTHING WAS FOUND.

DATE OF SURVEY: JUNE, 1971

Oscar J. Dittrich P.E.
 SURVEY SUPERVISOR
 DISTRICT 1